

Food Security Cluster Coordination Meeting Hirshabelle State

13-June-2023

Agenda

1. Introduction and opening remarks (MoHADM, MoAI, MoLFR)
2. Review of action points from previous meeting
3. Weather Forecast and Floods Update in Hirshabelle State – FAO SWALIM
4. FSC Partner Response Overview (April 2023)
5. WFP Response and Planning in Hirshabelle State – WFP
6. AOB

Introduction and opening
remarks (MoAI, MoLFR,
MoHADDM)

Previous action points

1. FSC to share Partners' Response Overview for March 2023. - **DONE**
2. FSC to share FAO SWALIM's presentation. - **DONE**
3. FSC to share consolidated partners' flood response plan. – **DONE/ONGOING**
4. FSC to setup OPZ coordination meetings for local coordination for deduplication. - **PENDING**

Weather Forecast and Floods Update in Hirshabelle State – FAO SWALIM



Food and Agriculture Organization
of the United Nations

Weather Review, Forecast and Flood Update for Hirshabelle State

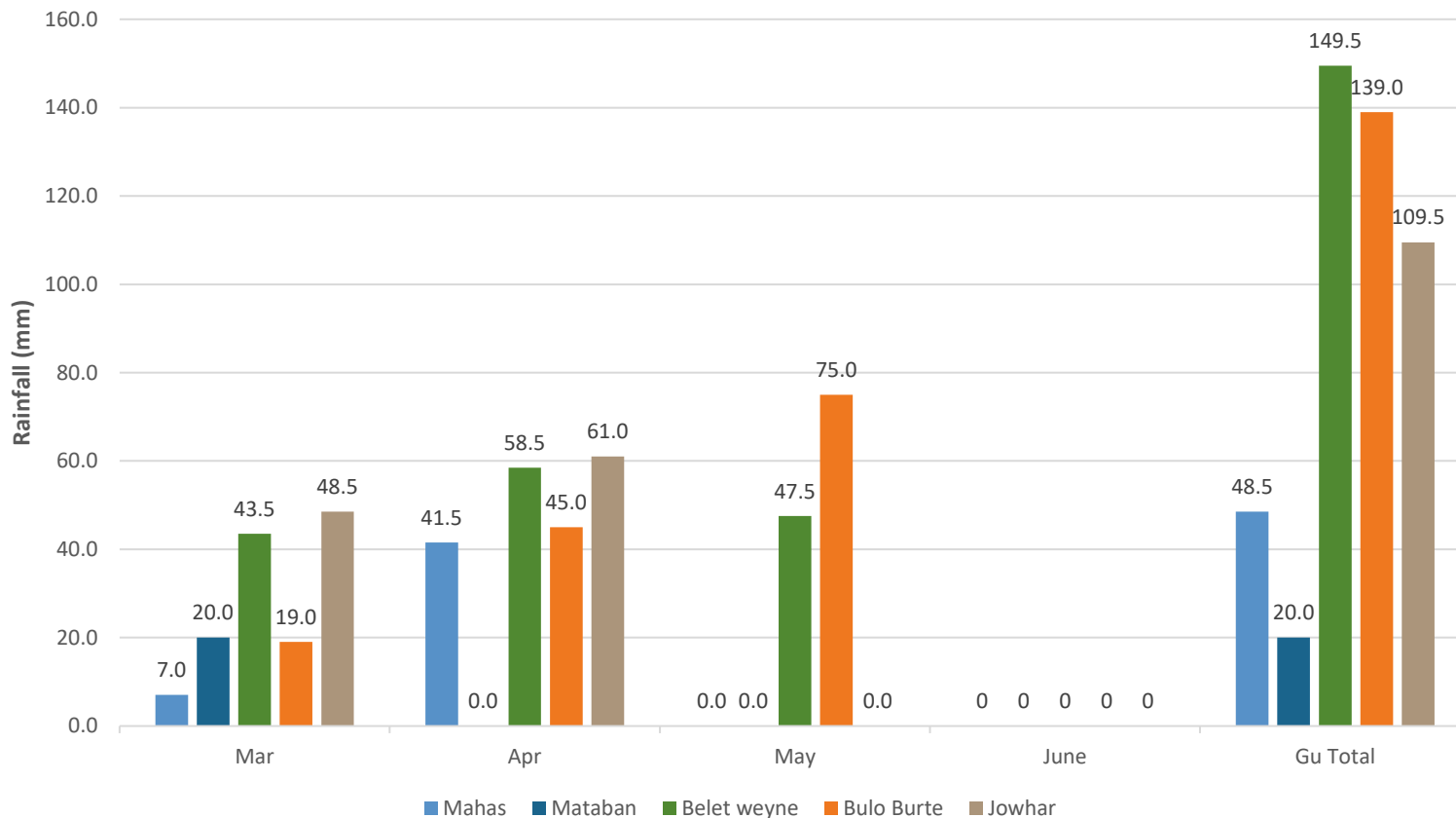
13 June 2023

Flavian Muthusi, Bethwel K. Mutai, Saaed Mohamed & Omar Sabrie Olad

FAO/SWALIM

Past and Present Weather

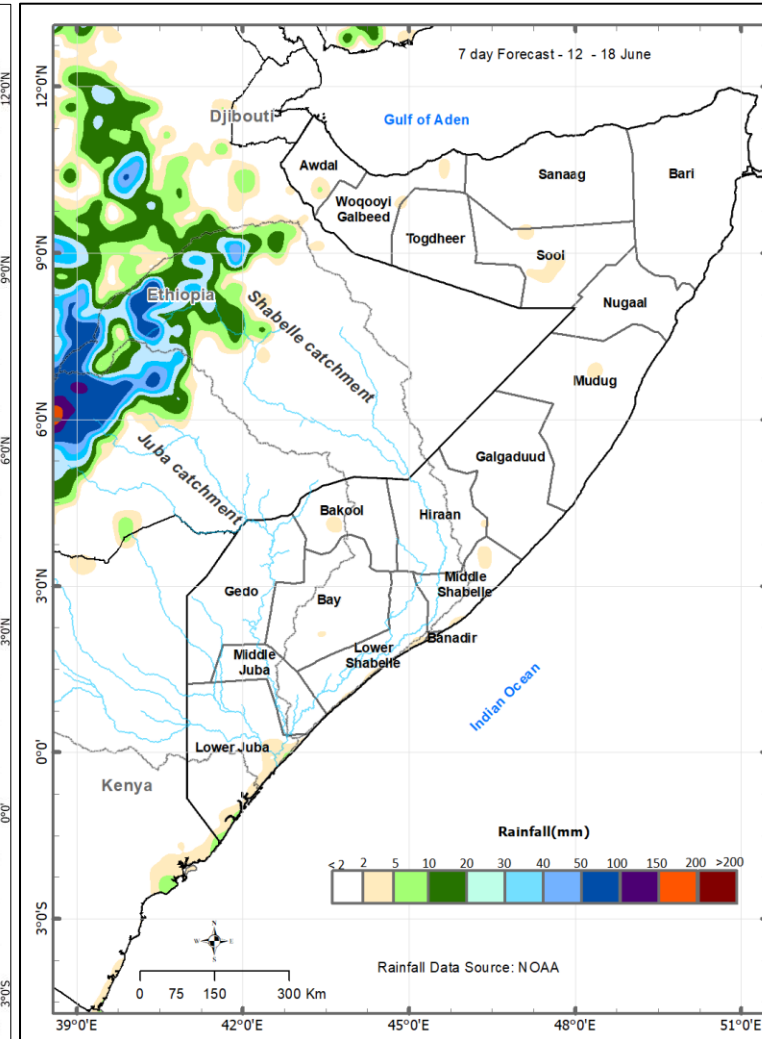
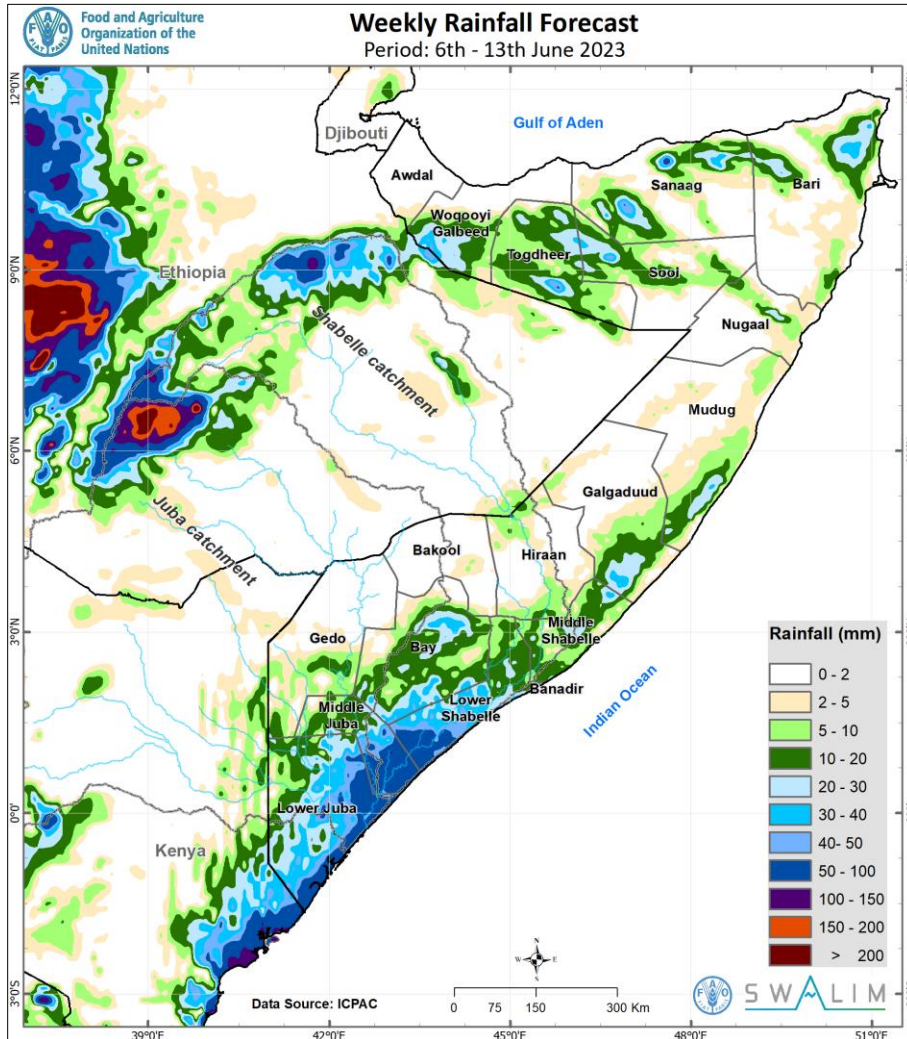
Monthly and Seasonal (2023) Rainfall over Stations in Hirshabelle and Banadir



- No rain was received in Mataban station in April
- Only BW and BB received rainfall in May 2023
- No rainfall has been received in the June 2023
- The Gu seasonal rainfall totals so far over Hirshabelle are:
 - Belet Weyne (149.5 mm)
 - Bulo Burte (139.0 mm)
 - Jowhar (109.5 mm)
 - Mahas (48.5 mm)
 - Mataban (20.0 mm)

Rainfall Forecast for 6 – 13 June 2023

Rainfall Forecast 12- 18 June 2023



Rainfall Forecast for 6 – 13 June 2023:

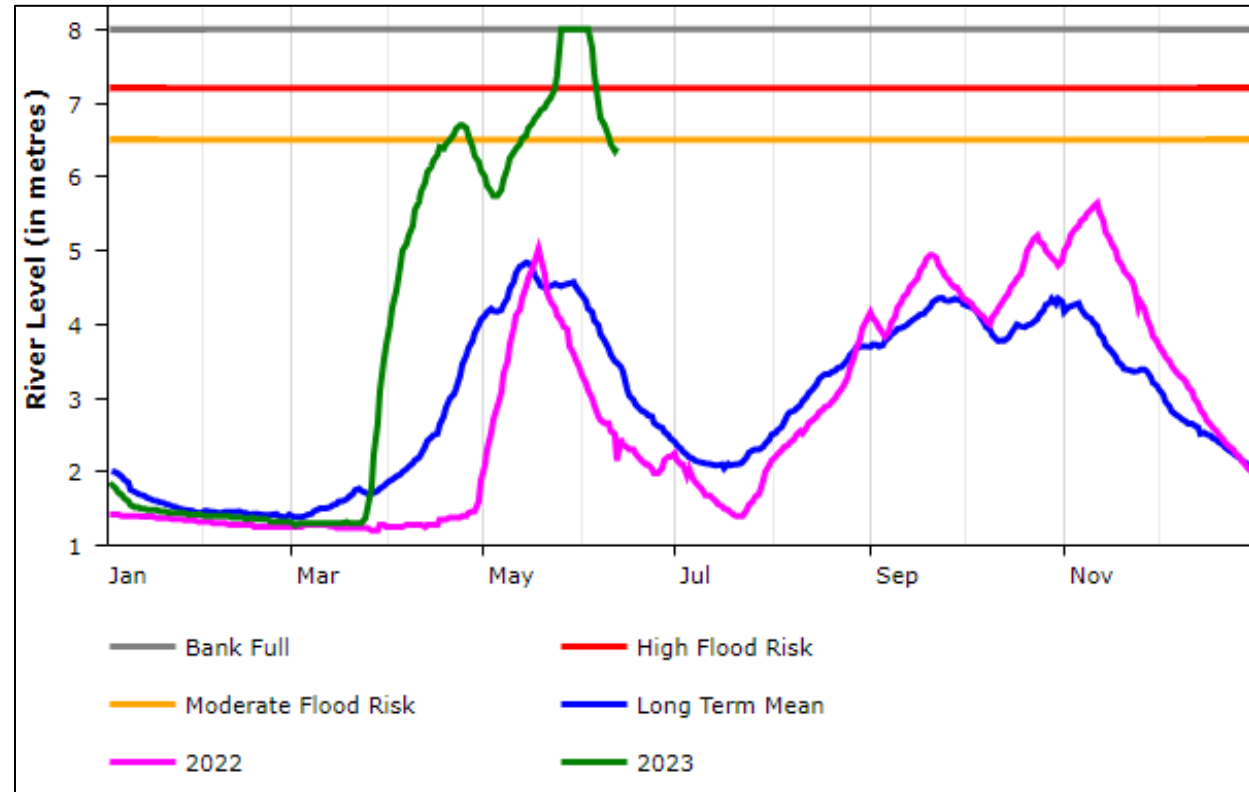
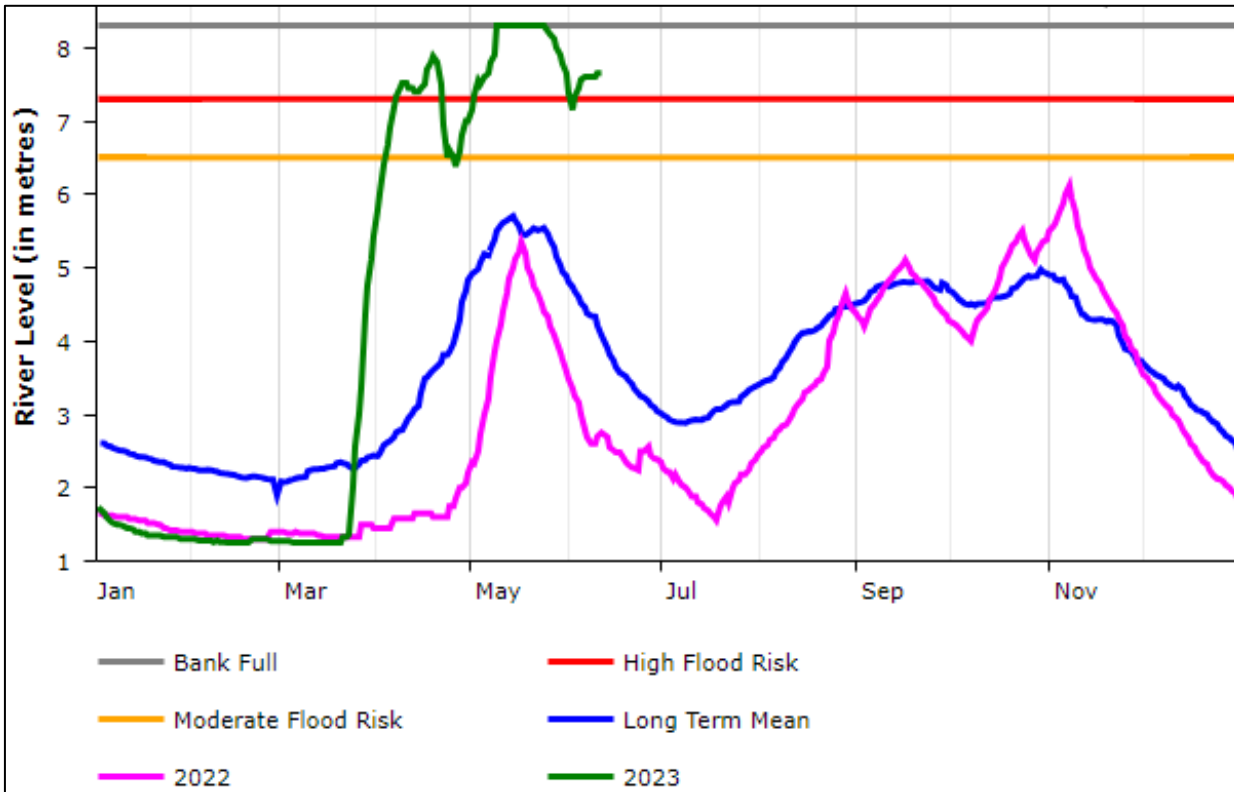
- Moderate rainfall was expected over southern coastal regions with light rains likely over some areas in the north
- Dry conditions were forecast over much of Hiraan (light rains of less than 20 mm over northern parts of Belet Weyne District
- Light rains of about 30 mm were expected over some areas in Middle Shabelle region

Rainfall Forecast for 12 – 18 June 2023:

- Dry conditions are forecast over the entire country



Shabele River Flood Update: @ Belet Weyne and @ Bulo Burte as on 12 June 2023





Shabele River Flood Update

- After being at bankful level with reported flooding impacts, the river levels at Belet Weyne and Bulo Burte have been continuously dropping
- Although the river levels at Belet Weyne and Bulo Burte are still within the high flood risk levels, they are expected to drop given the forecast dry conditions
- It is expected that the current river levels at Bulo Burte and Jalalaqsi will be transmitted to Jowhar in the coming days
- However, the presence of two open unrehabilitated canals and breakages between Jalalaqsi and Jowhar directing water to irrigation lands in the agropastoral areas over Wanla Weyne will lead to flood water extraction thereby lessening the likelihood of flooding in Jowhar
- However, a MODERATE-RISK FLOOD WARNING remains in effect for Belet Weyne, Bulo Burte, Jalalaqsi and the adjacent areas as the river levels continue to decrease &
- A LOW-RISK OF FLOODING is foreseen over the next one week for Jowhar and the adjacent areas
- SWALIM and partners will continue monitoring the rainfall-run off situation upstream of Belet Weyne and give regular updates



Shabele River Flood Update: TAKING EARLY ACTION SAVES LIVES

- The residents of the recently flooded areas in Belet Weyne, Bulo Burte and Jalalaqsi should take precautions as they consider moving back to their homes
- They need to ascertain the strength of the housing structures, latrines, etc., which may have been weakened by the flood waters
- They also need to ensure that they consume clean treated water as contamination is likely to have occurred during flooding.
- Residents of Belet Weyne, Bulo Burte, Jalalaqsi and Jowhar towns and surrounding areas are strongly recommended to stay informed through regular bulletin updates at specified times, monitor through radio, television, and internet for flood warnings

Impacts of Past and Forecast Weather



Generally, dry conditions are expected in Hirshabelle, with light to moderate rains forecast over Shabelle River catchment in Ethiopian highlands



Although Shabelle River at BW is still above high flood risk level, the levels are expected to stabilize in the coming days given the forecast light to moderate rains in the upper catchment in Ethiopia and dry conditions within the country



Given the forecast dry conditions over Hirshabelle, the recharge of surface water sources will be minimal, and the high temperatures will lead to evapotranspiration thereby reducing the soil moisture



Depending on the length of the dry conditions, low soil moisture may affect the regenerated vegetation which is important for human and livestock survival



The forecast dry conditions have implications on the management of crops at various vegetative stages; while it is good for such practices as weeding, the soil disturbance can lead to faster soil moisture loss



Food and Agriculture Organization
of the United Nations

Mahadsanid! Thank You



www.faoswalim.org

FSC Partner Response Overview (April 2023)

FOOD SECURITY RESPONSE (OBJ 1): IMPROVED ACCESS TO FOOD

PEOPLE Targeted & People Reached (Monthly)

571.00K 

People Targeted

216.29K 

People Reached

Percentage Response

38%

People reached against the target

Response by Modality

53%



Cash

47%



Voucher

0%



In-Kind

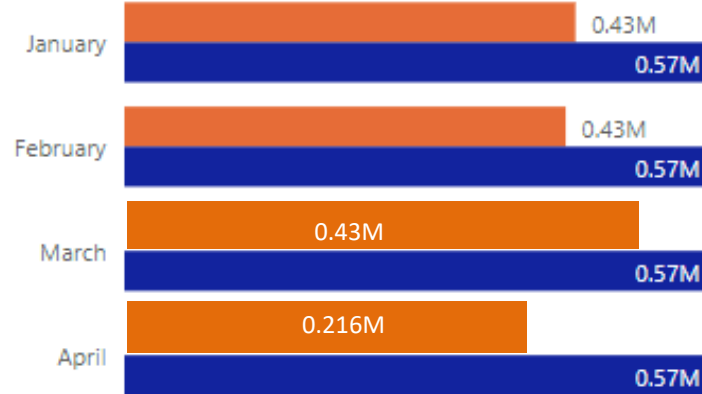
Cash/Vouchers Transferred (Monthly)



2M \$

Reached against Target Per Month

● Sum of Reached ● Sum of Target

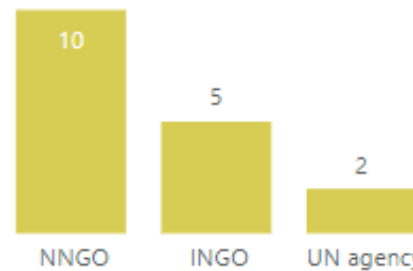


Partner Reporting (Monthly)

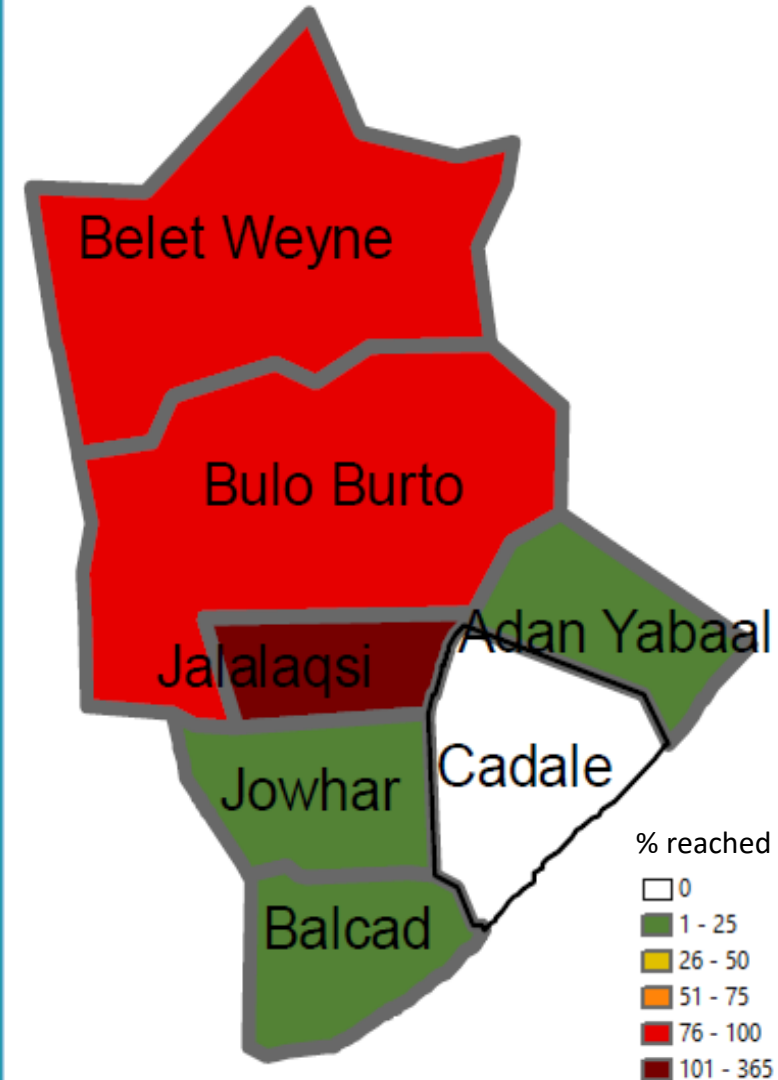
17



of Partners



Improved Access To Food: % Of People Reached vs Target (Monthly)



Obj1 Response at District level – April 2023



Region		FSC 2023 HRP Target (SO1)	(SO1) Improve availability and access to food actual achievement -April	% Reached
Hiraan	Belet Weyne	131,010	103,566	79%
	Bulo Burto	38,730	29,910	77%
	Jalalaqsi	22,710	44,436	196%
Middle Shabelle	Adan Yabaal	36,980	1,200	3%
	Balcad	171,610	20,280	12%
	Cadale	32,400	150	0%
	Jowhar	137,560	16,746	12%
Total		571,000	216,288	54%

PEOPLE TARGETED & People Reached (Cumulative)

424.56K
People Targeted

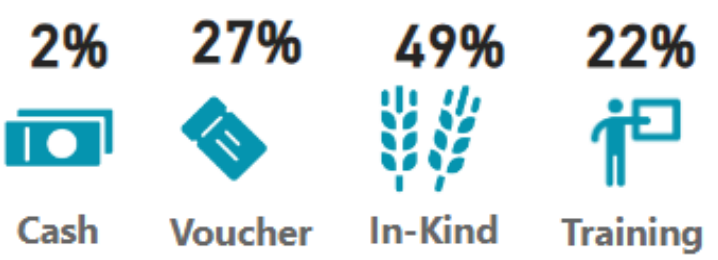
89.29K
People Reached

Percentage Of People Reached against the target

9.5%

People Reached against the

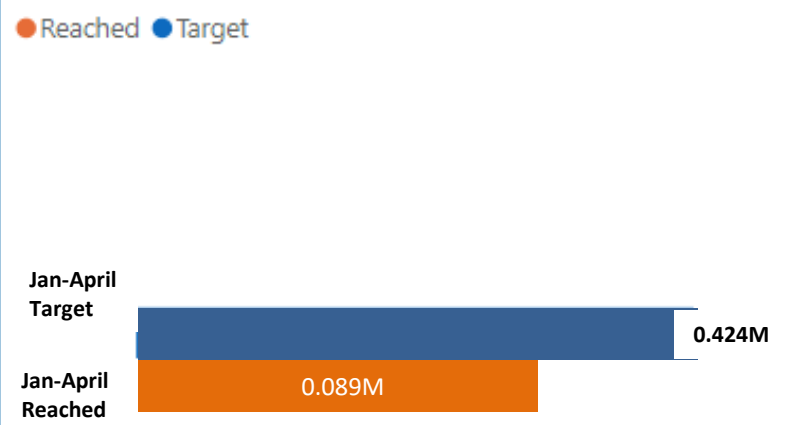
Response by Modality (Cumulative)



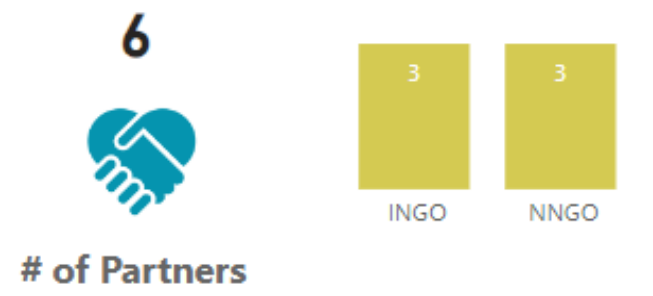
Cash/Vouchers Transferred (Cumulative)

269K \$

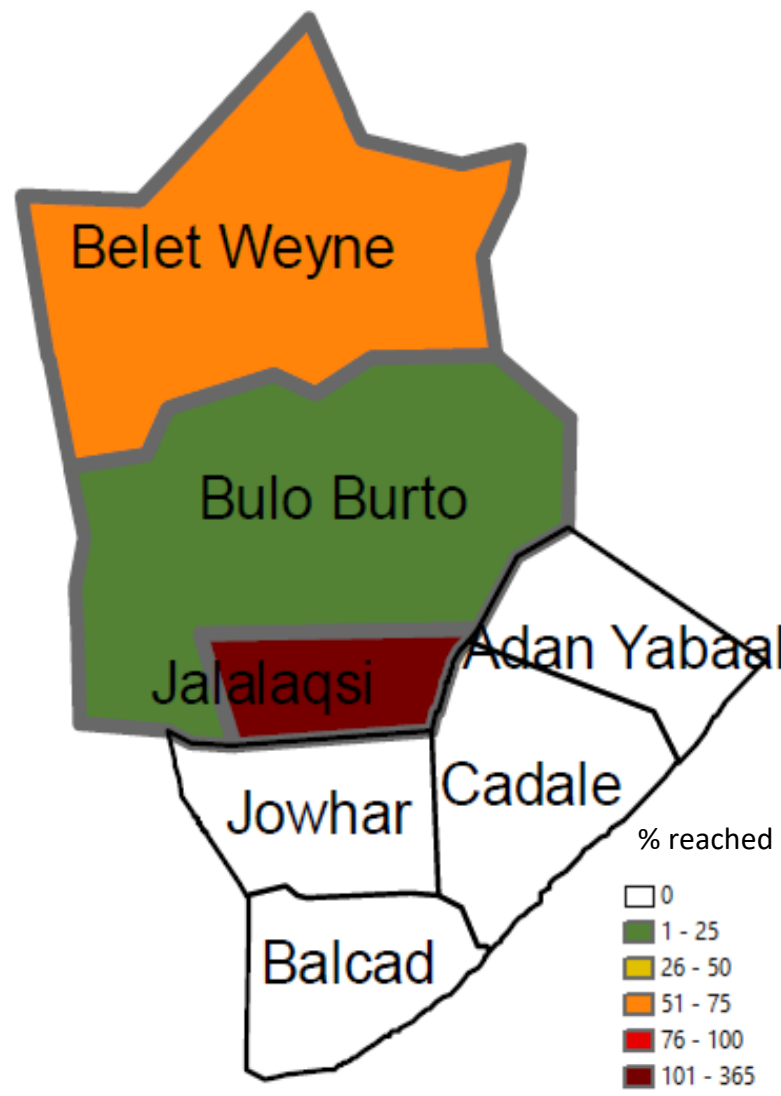
Reached against Target (Cumulative)



Partner Reporting (Cumulative)



Protecting Livelihoods: % Of People Reached vs Target (Cumulative)



Region	District	FSC 2023 HRP Target (SO2)	(SO2)Protect livelihoods and related food and income sources (Cumulative)	% Response
Hiraan	Belet Weyne	85,617	61,626	72%
	Bulo Burto	35,080	8,742	25%
	Jalalaqsi	16,380	18,924	116%
Middle Shabelle	Adan Yabaal		-	0%
	Balcad	127,410	-	0%
	Cadale	32,400	-	0%
	Jowhar	127,668	-	0%
Total		424,555	89,292	30%

WFP Response and Planning in Hirshabelle State – WFP

Upcoming Events

- Joint Post-Flood Assessment
- Joint Flood Impact Assessment in Jowhar

Next Meetings

- **Hiran RCM:** 4th July 2023 (2:00PM-3:30PM)
- **Middle Shabelle RCM:** 5th July 2023 (10:00AM-11:30PM)
- **Hirshabelle SCM:** 11th July 2023 (10:00AM-11:30AM)

THANK YOU

