

# Food Security Cluster Coordination Meeting Hirshabelle State

9-May-2023

# Agenda

1. Introduction and opening remarks (MoAI, MoLFR, MoHADDM)
2. Review of action points from previous meeting
3. FSC Partner Response Overview (March 2023)
4. Weather Forecast and Floods Update in Hirshabelle State – FAO SWALIM
5. Floods Preparedness and Update – FSC
6. OPZ geo-coordination and partner plans Q2
7. AOB

Introduction and opening  
remarks (MoAI, MoLFR,  
MoHADDM)

# Previous action points

1. FSC to share Partners' Response Overview for March 2023. - **TODAY**
2. FSC to share FAO SWALIM's presentation. - **DONE**
3. FSC to consolidate partners' resource mapping for emergency flood response. - **DONE**
4. FSC to update all partners on the situation around the flood alerts. - **ONGOING**

# FSC Partner Response Overview (March 2023)

# FOOD SECURITY RESPONSE (OBJ 1): IMPROVED ACCESS TO FOOD

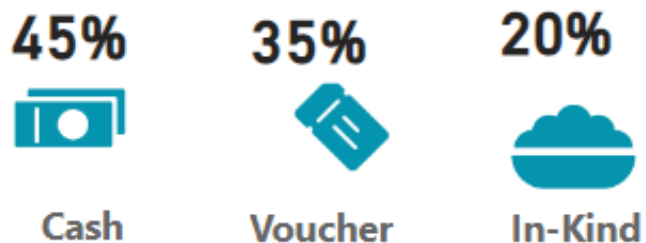
## PEOPLE Targeted & People Reached (Monthly)



### Percentage Response



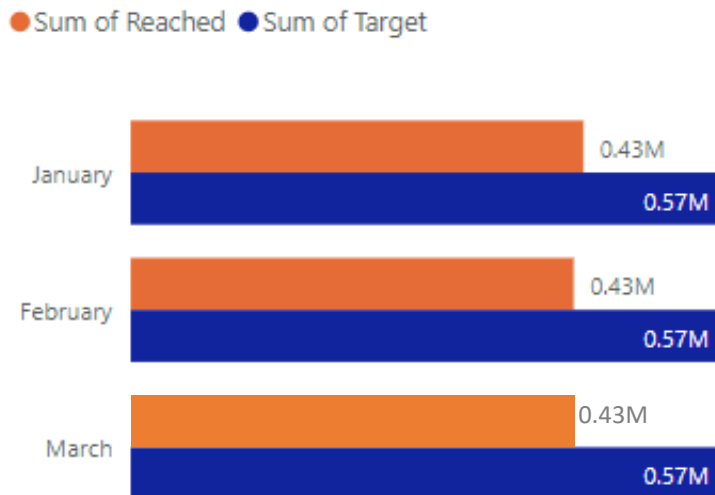
### Response by Modality



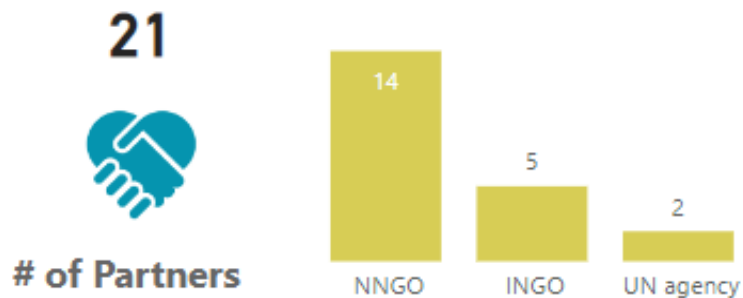
### Cash/Vouchers Transferred (Monthly)



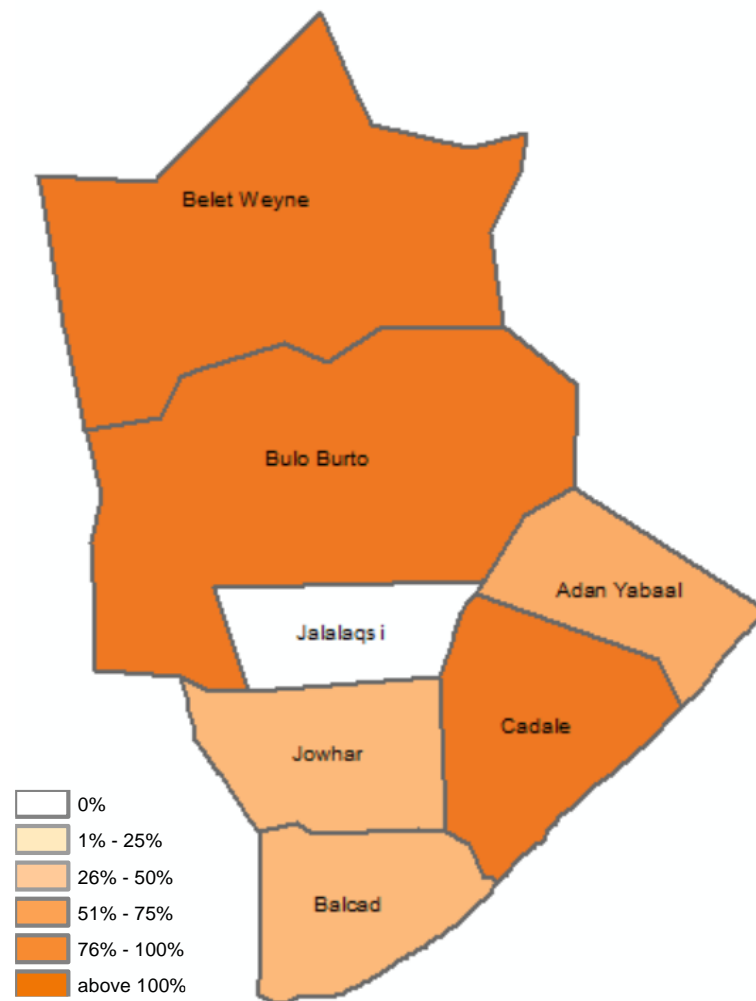
## Reached against Target Per Month



## Partner Reporting (Monthly)



## Improved Access To Food: % Of People Reached vs Target (Monthly)



# Objective 1: District-level Response – March 2023

Region	District	FSC 2023 HRP Target (SO1)	(SO1) Improve availability and access to food actual achievement (Monthly)	% Reached
Hiraan	Belet Weyne	131,010	139,488	106%
	Bulo Burto	38,730	49,112	127%
	Jalalaqsi	22,710	82,488	363%
Middle Shabelle	Adan Yabaal	36,980	27,000	73%
	Balcad	171,610	54,078	32%
	Cadale	32,400	39,666	122%
	Jowhar	137,560	38,952	28%
<b>Total</b>		<b>571,000</b>	<b>430,784</b>	

## PEOPLE TARGETED & People Reached (Cumulative)

**424.56K** 

People Targeted

**55.35K** 

People Reached

## Percentage Of People Reached against the target

**13%**

People Reached against the

## Response by Modality (Cumulative)

**3%**



Cash

**22%**



Voucher

**40%**



In-Kind

**35%**



Training

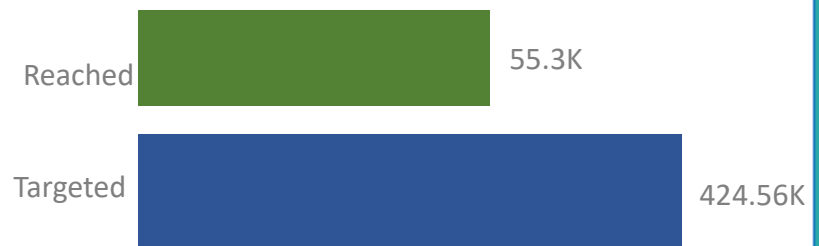
## Cash/Vouchers Transferred (Cumulative)



**208K \$**

## Reached against Target (Cumulative)

● Reached ● Target



## Partner Reporting (Cumulative)

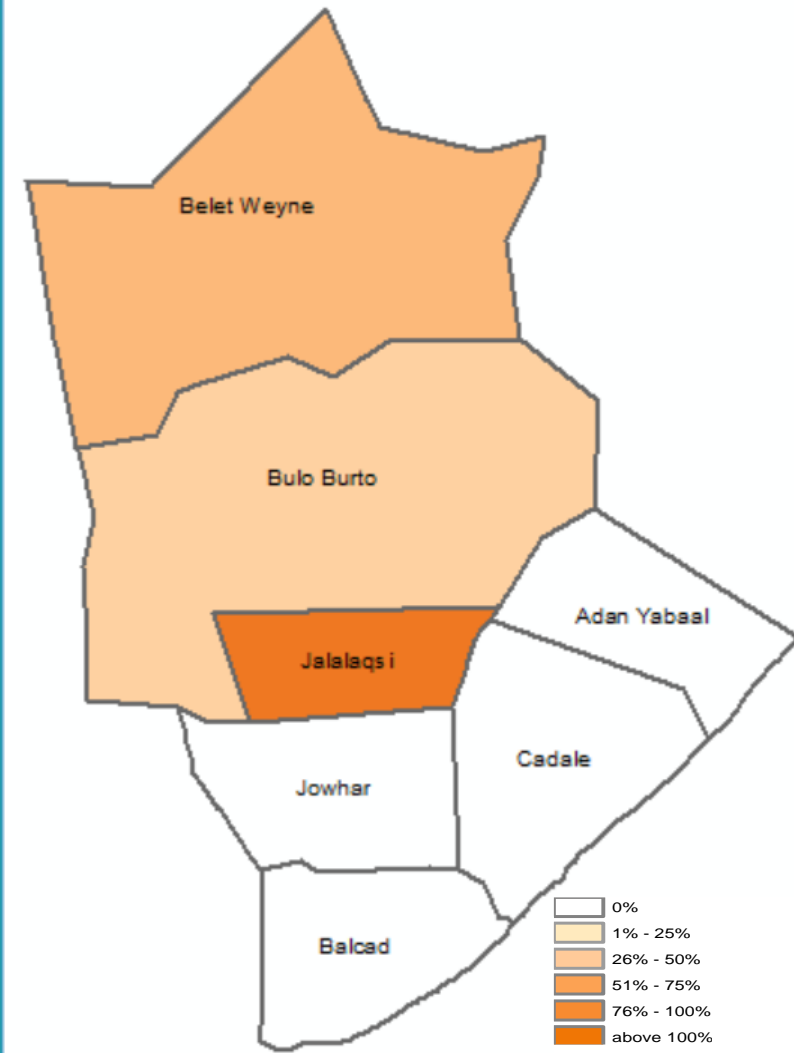
**5**



# of Partners



## Protecting Livelihoods: % Of People Reached vs Target (Cumulative)



Legend:  
 0%  
 1% - 25%  
 26% - 50%  
 51% - 75%  
 76% - 100%  
 above 100%



## Objective 2: District-level Response – March 2023

Region	District	FSC 2023 HRP Target (SO2)	(SO2)Protect livelihoods and related food and income sources (Cumulative)	% Reached
Hiraan	Belet Weyne	85,617	32,598	38%
	Bulo Burto	35,080	3,828	11%
	Jalalaqsi	16,380	18,924	116%
Middle Shabelle	Adan Yabaal	-		#DIV/0!
	Balcad	127,410		0%
	Cadale	32,400		0%
	Jowhar	127,668		0%
<b>Total</b>		<b>424,555</b>	<b>55,350</b>	

# Weather Forecast and Floods Update in Hirshabelle State – FAO SWALIM



Food and Agriculture Organization  
of the United Nations

# Weather Review and Forecast for Hirshabelle State

*09 May 2023*

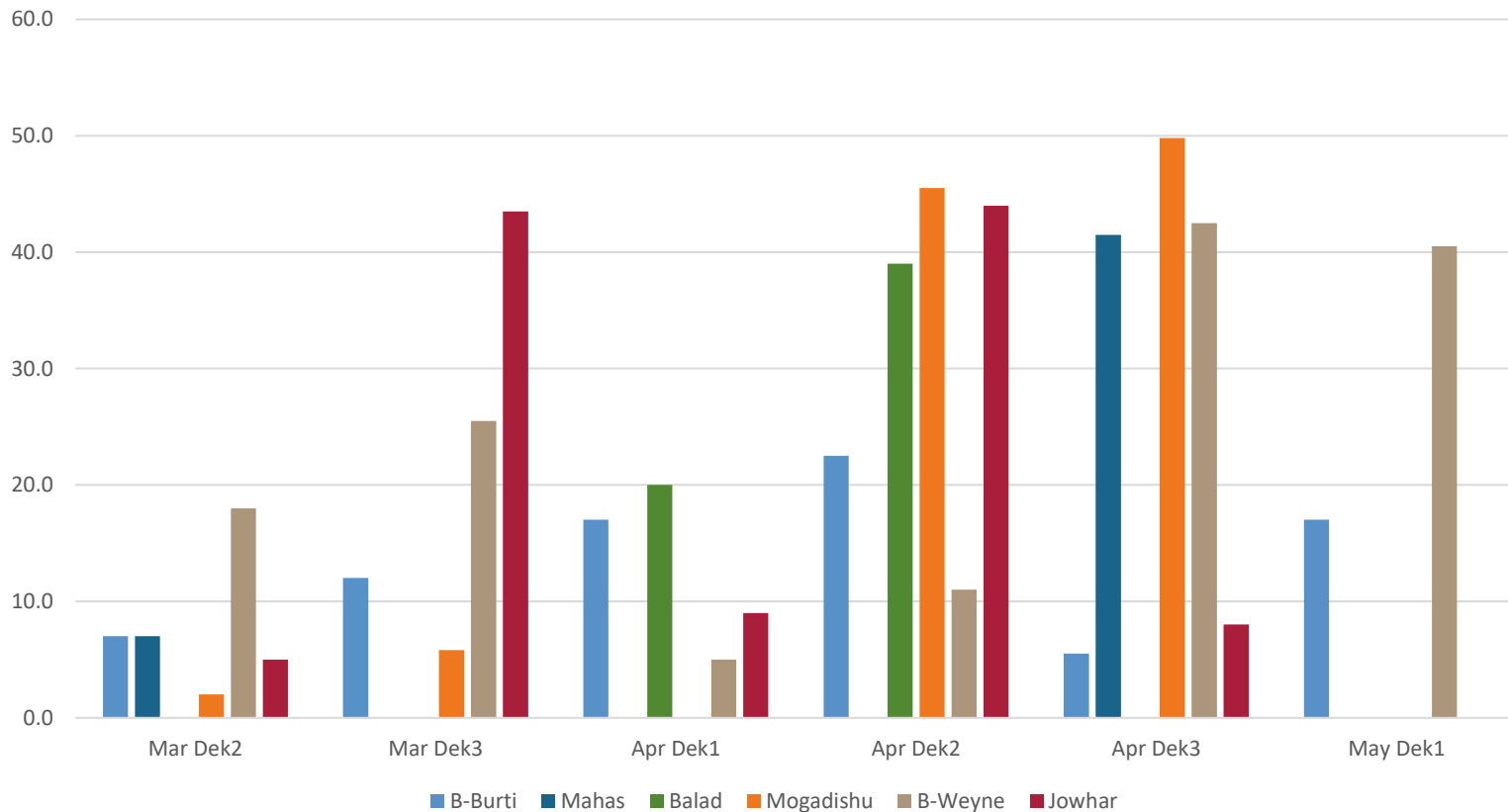
---

**Omar Sabrie Olad & Mohamed Saeed**

**FAO/SWALIM**

## Past and Present Weather

Observed Dekadal Rainfall Amounts during *Gu* Season 2023



- The *Gu* seasonal rainfall totals over Hirshabelle and Banadir are:
  - B-Burti (81.0 mm),
  - Mahas (48.5 mm),
  - Balad (59.0 mm),
  - B-weyne (142.5 mm) and
  - Jowhar (109.5 mm)
- Only B-Burti (17.0 mm) and B-Weyne (40.5 mm) have received rain during the first decade of May

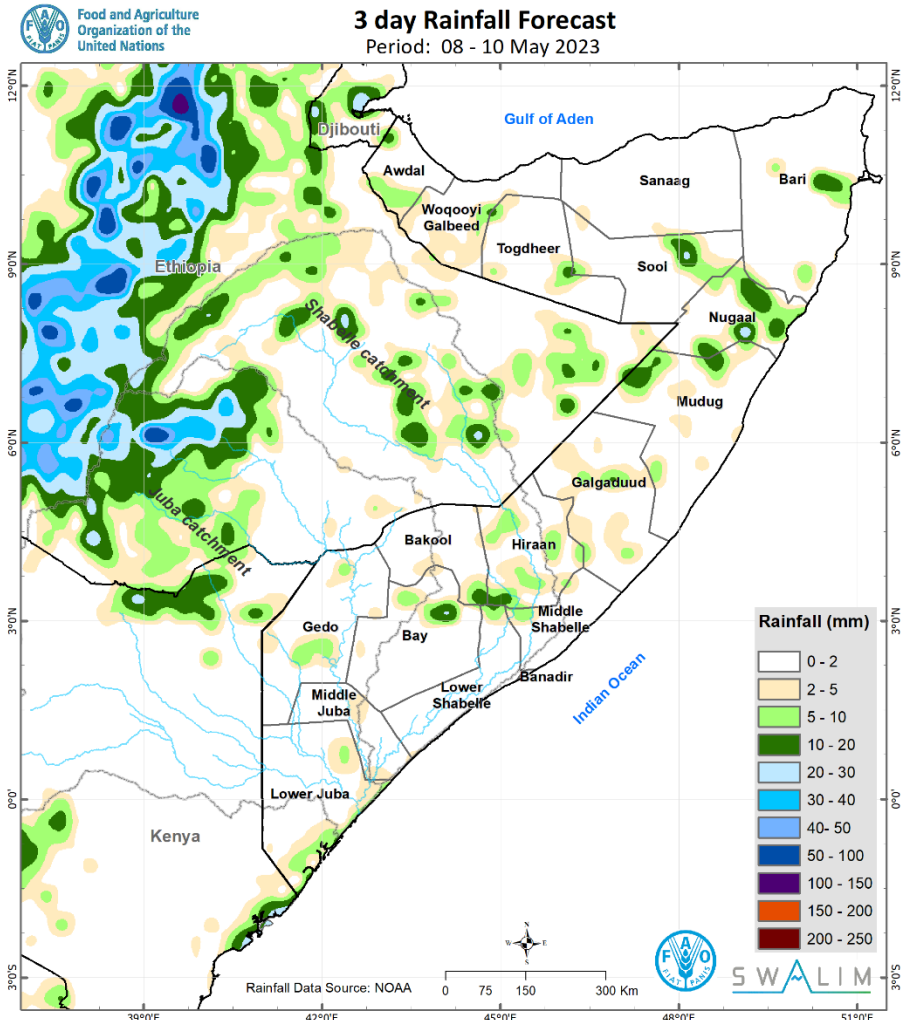


## Current River Levels: **Shabelle River at Belet Weyne is now bankful (8.30 m) with high risk of flooding**

River	Station	Date	Observed River Level (m)	Moderate Risk Levels (m)	High Risk Levels (m)	Bankfull (m)
Jubba River	Dollow	09-05-2023	4.20	4.50	5.00	6.00
Jubba River	Luuq	08-05-2023	4.84	5.50	6.00	7.00
Jubba River	Bardheere	08-05-2023	7.64	7.40	8.20	10.40
Jubba River	Bualle	08-05-2023	7.59	9.00	10.00	12.00
Shabelle River	Belet Weyne	09-05-2023	8.30	6.50	7.30	8.30
Shabelle River	Bulo Burti	09-05-2023	6.25	6.50	7.20	8.00
Shabelle River	Jowhar	08-05-2023	3.75	5.00	5.25	5.50

- Yesterday (Monday) Shabelle River at Belet Weyne was approaching bankful
- The Hirshabelle State, MoA distributed prepositioned sandbags to the vulnerable sites which had begun seeping the water into the town
- Although these efforts might have mitigated, flooding is reported to have occurred last night
- The two most affected villages are: Howlwadag and Kooshin
- Shabelle River at Belet Weyne is now bankful (8.30 m) with high risk of flooding
- The affected population should evacuate and those in safer places in and around Belet Weyne must remain vigilant

## Weather Forecast for 08 – 10 May



- The rainfall forecast for the next three days (8<sup>th</sup> – 10<sup>th</sup> May) indicates light cumulative rain of about 10 mm over isolated areas in Hirshabelle (Map 1)
- Rains of similar amounts (about 20 mm) are expected over Shebelle River catchment in the Ethiopian Highlands
- Although Shabelle River at Belet Weyne is bankful with a high risk of flooding currently,
- ... river levels are expected to stabilize below moderate flood risk levels in the coming days given the above light to moderate forecast rainfall conditions.



## Impacts of Past: Sunday through Monday



- Riverflows and prepositioned sandbags on the vulnerable sites on Monday morning.
- Flood waters in the villages in the evening



## Impacts of Past and Forecast Weather



Generally, light rains are expected in isolated areas in Hirshabelle State, with dry conditions elsewhere. Light rains forecast over Shabelle River catchment in Ethiopian highlands



Although Shabelle River at Belet Weyne is bankful with a high risk of flooding currently, river levels are expected to stabilize below moderate flood risk levels in the coming days given the above light to moderate forecast rainfall conditions.



Although the expected light rains over isolated areas in Hirshabelle will lead to partial substantial recharge of surface water sources, high temperatures will lead to evapotranspiration thereby reducing the soil moisture



Depending on the length of the dry conditions, low soil moisture may affect the regenerated vegetation which is important for human and livestock survival



The light rains and dry conditions are favorable for weeding in Hirshabelle





# Mahadsanid! Thank You



[www.faoswalim.org](http://www.faoswalim.org)

# Floods Preparedness and Update – FSC

# Floods Preparedness and Update

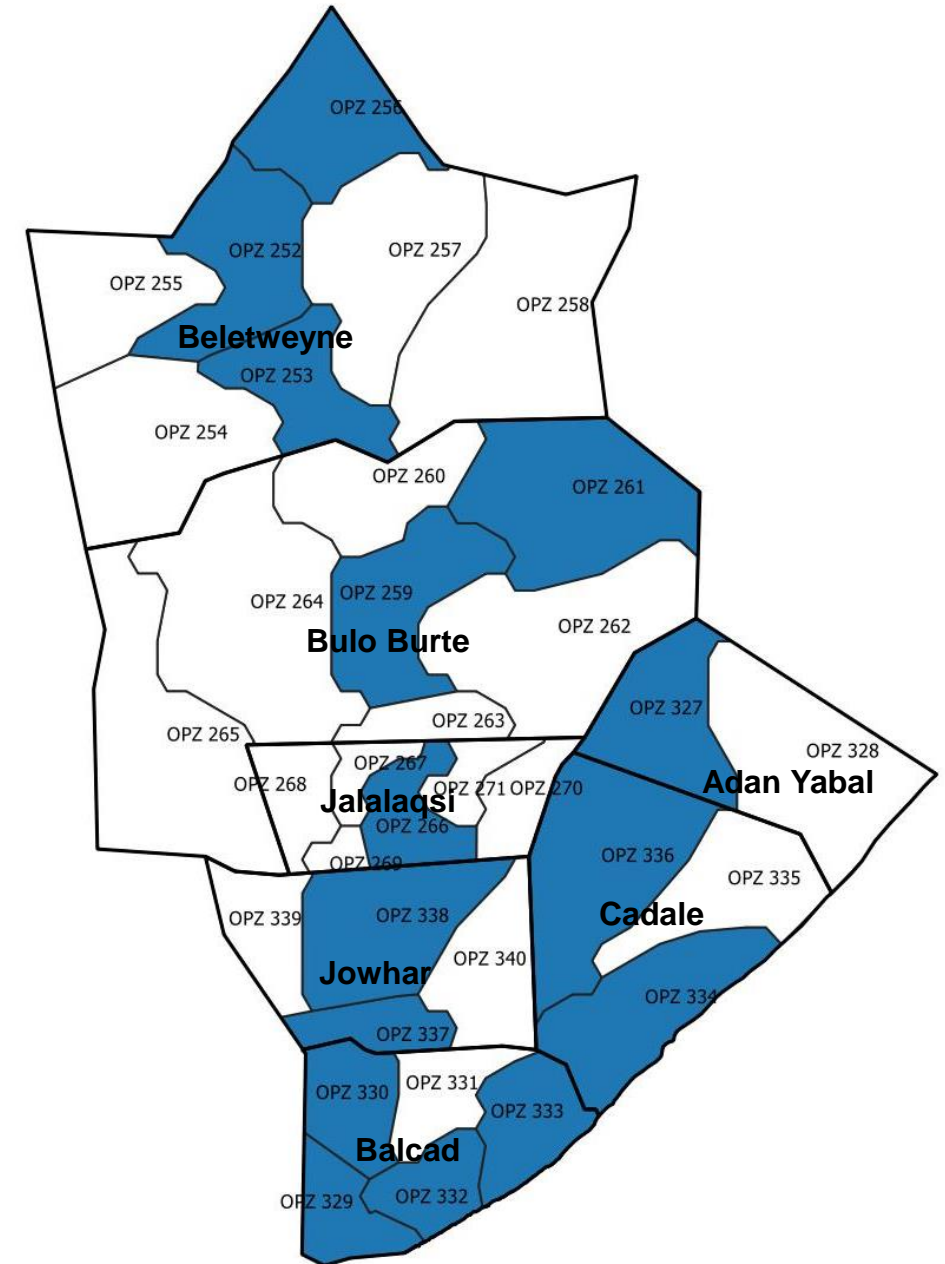
- **Floodings have occurred in Beletweyne Town as of yesterday due to spill over from the river channel.**
- FAO SWALIM weather forecast indicates low rainfall across Hirshabelle State between 3-9 May 2023.
- However, the Shabelle River level has been on the rise again since 28th April due to the heavy rainfalls received in Ethiopian highlands.
- River levels in Beletweyne in Beletweyne this morning is at bank full (8.3m) and about 15 riverine communities have been displaced.
- A government-led flood impact assessment will be conducted on 10th and 11th May.
  - 20 FSC partners will join the assessment team with 10 vehicles contributed by their organizations.
- FSC partners are urged to kindly provide urgent mitigation measures (e.g sandbags, inlet/outlet rehabilitation) to prevent further floods into Beletweyne Town

Activities	District	Available Stock	
		On hand	In pipeline
<b>FAO &amp; WFP</b> – Early Warning SMS Alerts to Farmers	Beletweyne	5,000 HHs	
<b>FAO</b> – Rehabilitation of 13 breakage sites across the Shabelle River	Beletweyne	13 Breakage Sites Rehabilitation	
<b>Islamic Relief Somalia</b> – Disaster Risk Reduction through Cash for Work	Beletweyne	100 HHs flood barrier construction	
<b>WFP</b> – Emergency life-saving Food Assistance	Beletweyne	10,000 HHs	
<b>Save the Children</b> – Emergency life-saving Food Assistance	Beletweyne		800 HHs
<b>WFP</b> – Emergency life-saving Food Assistance	Jowhar	10,000 HHs	
<b>Mercy Corps</b> – Multi-purpose Cash Assistance	Jowhar	200 HHs	
<b>FAO</b> – Rehabilitation of 05 Canals across the Shabelle River	Jowhar	05 Canals Rehabilitation	
<b>Islamic Relief Somalia</b> – Disaster Risk Reduction through Cash for Work	Balcad	100 HHs flood barrier construction	
<b>Mercy Corps</b> – Multi-purpose Cash Assistance	Balcad	179 HHs	
	Bulo Burte		
	Jalalaqsi		

OPZ geo-coordination and  
partner plans Q2

## Why OPZ Mapping?

1. Improve local coordination and partner engagement.
2. Minimize duplication of resources.
3. More realistic gap analysis and presence mapping.
4. Improved resource allocation and fair distribution of humanitarian assistance.
5. Monitor and predict partner performance to easily identify areas in need of attention and advocacy.



# OPZ Geo-coordination

- A partner intervention plan for Q2 (April, May and June) is being compiled.
- Plans (with confirmed funding) were received from WFP, FAO, Mercy Corps, WARDI and SYPD.
- IM team is finalizing OPZ matching for onward coordination to avoid duplication on the ground; and to ensure all the advantages of OPZ level coordination can be achieved.

Geographic Scope				Plan Figures (Individuals)	COVERAGE			Traffic Light	
Region	District	Classification of District	OPZ		% Plan Figures against Total of PIN (IPC 3,4,5)				
				JUN	Max For Q.2	APR	MAY	JUN	
Hiraan	Belet Weyne	Crisis	OPZ 252	74,116	80,884	236%	234%	216%	Red
			OPZ 253	330	330	2%	2%	2%	Green
			OPZ 254	0	0	0%	0%	0%	Green
			OPZ 255	0	0	0%	0%	0%	Green
			OPZ 256	16,025	17,100	124%	124%	116%	Red
			OPZ 257	0	0	0%	0%	0%	Green
			OPZ 258	0	0	0%	0%	0%	Green
			<b>Total</b>	<b>90,471</b>	<b>98,314</b>	<b>73%</b>	<b>72%</b>	<b>67%</b>	Yellow
Hiraan	Bulo Burtobe	Crisis	OPZ 259	7,427	7,787	104%	99%	99%	Red
			OPZ 260	0	0	0%	0%	0%	Green
			OPZ 261	5,598	5,598	120%	120%	120%	Red
			OPZ 262	0	0	0%	0%	0%	Green

# OPZ Geo-coordination

## Way Forward...

1. Finalize OPZ matching.
2. Follow up with FAO and WFP to collect missing information.
3. Follow up with OCHA to assist in matching village names to OPZ areas.
4. Start ad-hoc meetings with participating organizations on local coordination.
5. Share quarterly plans with relevant government authorities for better coordination.

Total planned caseload	April	May	June
District level plan	484,308	482,466	397,734
OPZ level plan	301,497	300,285	280,231
Percentage achieved at OPZ	62%	62%	70%



## Next Meetings

- **Hiran RCM:** 6th June 2023 (2:00PM-3:30PM)
- **Middle Shabelle RCM:** 7th June 2023 (10:00AM-11:30PM)
- **Hirshabelle SCM:** 13th June 2023 (10:00AM-11:30AM)

THANK YOU

