

# Food Security Cluster Coordination Meeting Hirshabelle State

30-January-2023

# Agenda

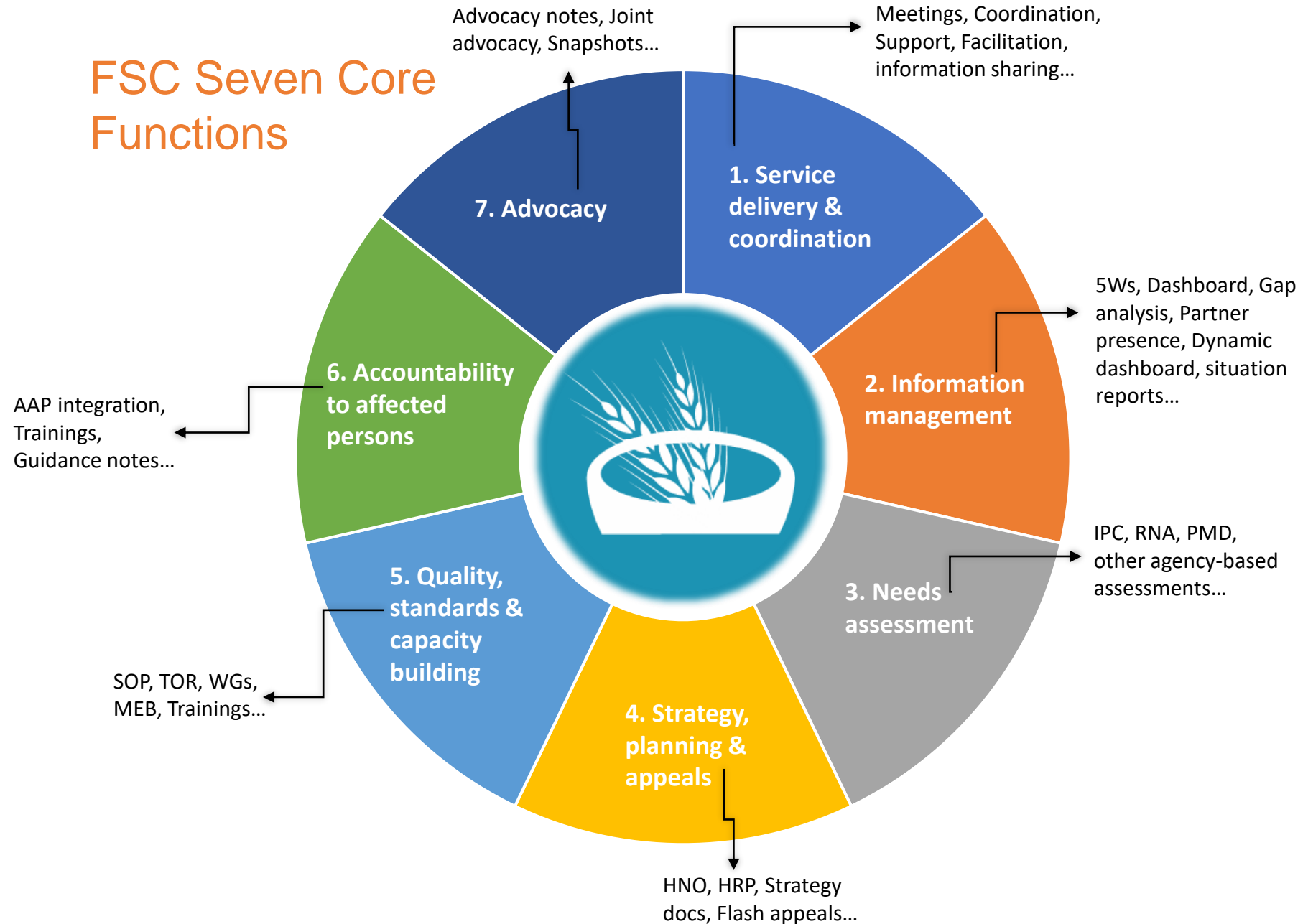
1. Introduction and opening remarks (MoAI, MoHADM)
2. FSC Strategy and Priorities - 2023
3. FSC Partner Response Overview 2022 (Gaps, Liberated areas)
4. Regional and State-Level Meeting plan 2023
5. AOB

# FSC Strategy and Priorities - 2023

1. FSC Core Functions
2. HRP-2023 Key Figures
3. FSC Regional and State-level Coordination Structure
4. Information Management
5. Government Collaborations
6. Inter-Cluster Collaborations
7. Cross-cutting Issues

# FSC Strategy and Priorities - 2023

## FSC Seven Core Functions



## HRP 2023 Key Figures



**571,000**

**Total People Targeted**



**34**

**Partners**



**571,000**

**SO1 Target**



**424,555**

**SO2 Target**

---

## FSC Strategic Objectives & Indicators

### **SO1: Improved access to food**

**Indicator:** # of individuals provided with lifesaving, Humanitarian food and Cash assistance by population groups (non IDPs, IDPs) and Location (rural, urban)

Activities:

### **SO2: Protection of livelihoods and related food and income sources**

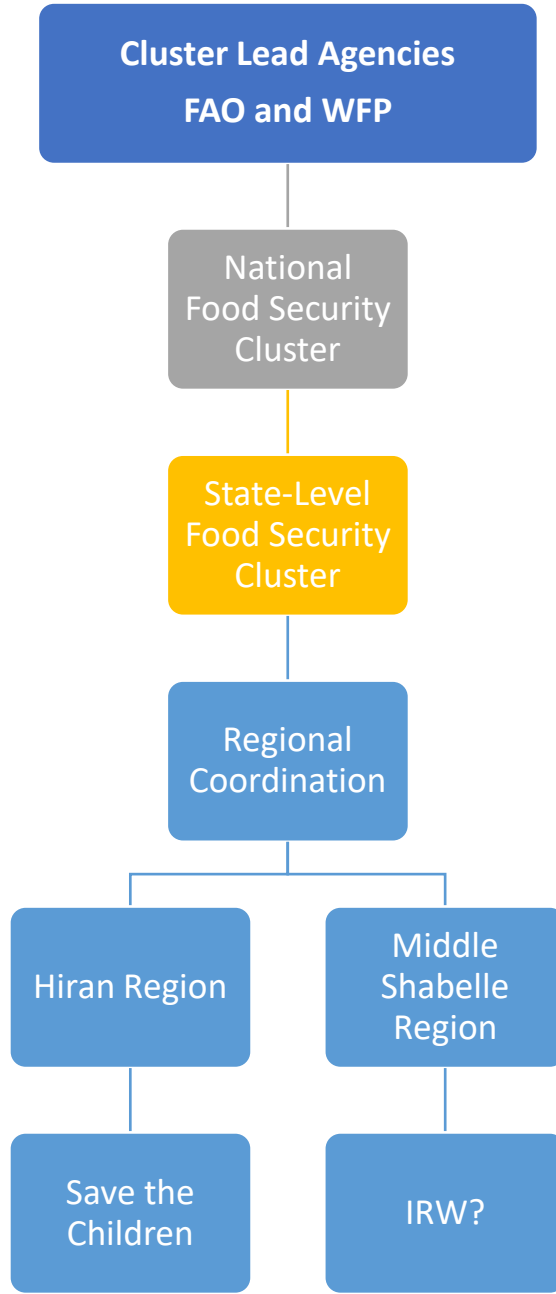
**Indicator:** # of individuals provided with life-sustaining , emergency livelihoods assistance by population profile( agriculture, livestock, fisheries and others) and Location (rural, urban)

## HRP 2023 Facts

### FSC Targets by District

Region	District	SO1	SO2
Hiraan	Belet Weyne	131,010	85,617
Hiraan	Bulo Burto	38,730	35,080
Hiraan	Jalalaqsi	22,710	16,380
Middle Shabelle	Adan Yabaal	36,980	
Middle Shabelle	Balcad	171,610	127,410
Middle Shabelle	Cadale	32,400	32,400
Middle Shabelle	Jowhar	137,560	127,668
<b>TOTAL</b>		<b>571,000</b>	<b>424,555</b>

## FSC Regional and State-level Coordination Structure



### FSC Hirshabelle Coordination Team

Hiran Regional Coordinator

Abdikadar Awale

Save the Children

[Abdikadar.Awale@savethechildren.org](mailto:Abdikadar.Awale@savethechildren.org)

Middle Shabelle Regional Coordinator

???

Hirshabelle State Coordinator

Usman Buhari

[Usman.Buhari@fao.org](mailto:Usman.Buhari@fao.org)

FAO Focal Point

Lita Jackson

[Jackson.Lita@fao.org](mailto:Jackson.Lita@fao.org)

WFP Focal Point

Ibrahim Aden Ibrahim

[ibrahimaden.ibrahim@wfp.org](mailto:ibrahimaden.ibrahim@wfp.org)

# FSC Strategy and Priorities - 2023

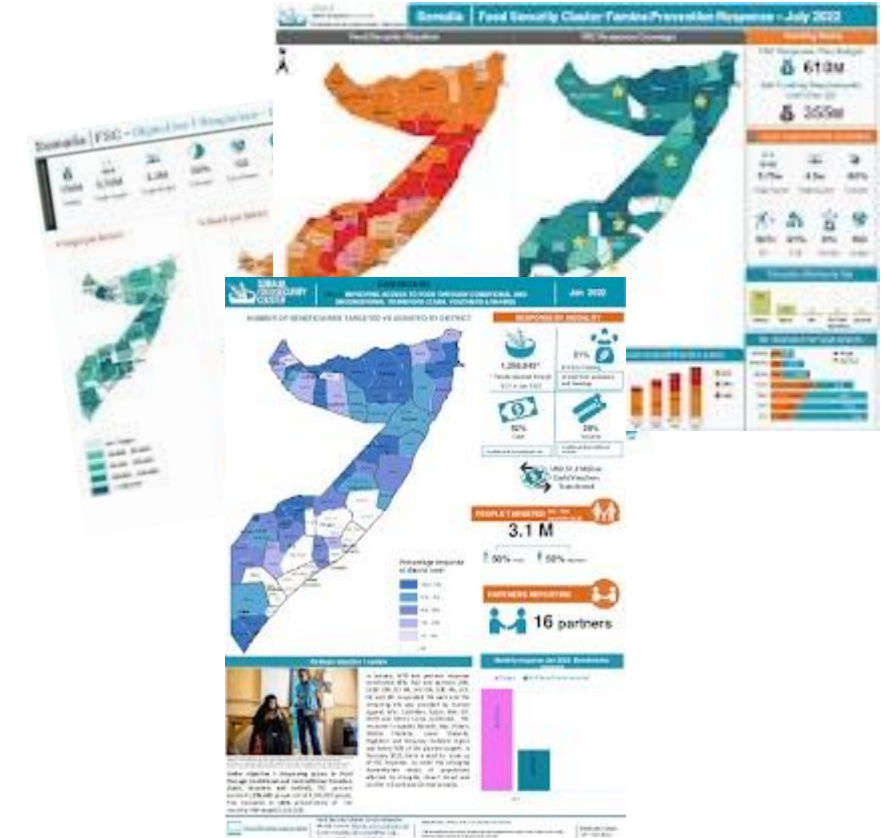
## Information Management

To facilitate information sharing and knowledge management, the Food Security Cluster produces several information products based on inputs from partner responses. Below are currently the information products being developed and will now be shared regularly with FSC Hirshabelle partners.

### Key IM Products

- Monthly 5Ws partners' response database
- Dashboards – both [interactive](#) and static
  - Overview Dashboard, Gap analysis, Partner presence
- OCHA monthly products
  - Dashboard data collection input
  - Drought response data
  - 5W and cash matrix input
- Region/State-level monthly response analysis – district level

FSC Somalia Website: <https://fscluster.org/somalia/overview>





## Government Collaborations

The Food Security Cluster in Somalia works closely with three Government line ministries who participate, lead and support our coordination efforts as they provide guidance.

The three line ministries;

1. Ministry of Humanitarian Affairs and Disaster Management
2. Ministry of Agriculture and Irrigation
3. Ministry of Livestock, Forestry and Range

The Food Security Cluster in Hirshabelle State will ensure to establish and maintain a cordial working relationship with these ministries and consult them regularly as they play leading and guiding roles in our efforts to strengthen coordination in the whole state.

## Inter-Cluster Collaborations

The Food Security Cluster will work in close coordination with Nutrition, WASH, and Protection clusters, this is to ensure that a more wholistic picture of the needs, challenges and triggers of certain conditions are easily identified and addressed.

Understanding when and where food security partners are operating in comparison to the presence and/or absence of the above-mentioned clusters can allow the cluster better identify priority areas and advise organizations and decision-makers accordingly.

### Priority actions for collaboration

1. Information sharing (5Ws consolidation)
2. Joint mapping
3. Joint advocacy materials
4. Inter-cluster joint missions to hotspot areas

### Other inter-coordination forum

- State ICCG
- Area Humanitarian Coordination Group

## Cross-cutting Issues

### **Gender, Protection and Disability**

Mainstream Protection, Gender and Inclusion concerns (such as disability) within FSC activities, in effort to end all forms of violence against especially women and children, and to ensure their equal participation in matters pertaining to food security.

### **Accountability to Affected Population (AAP)**

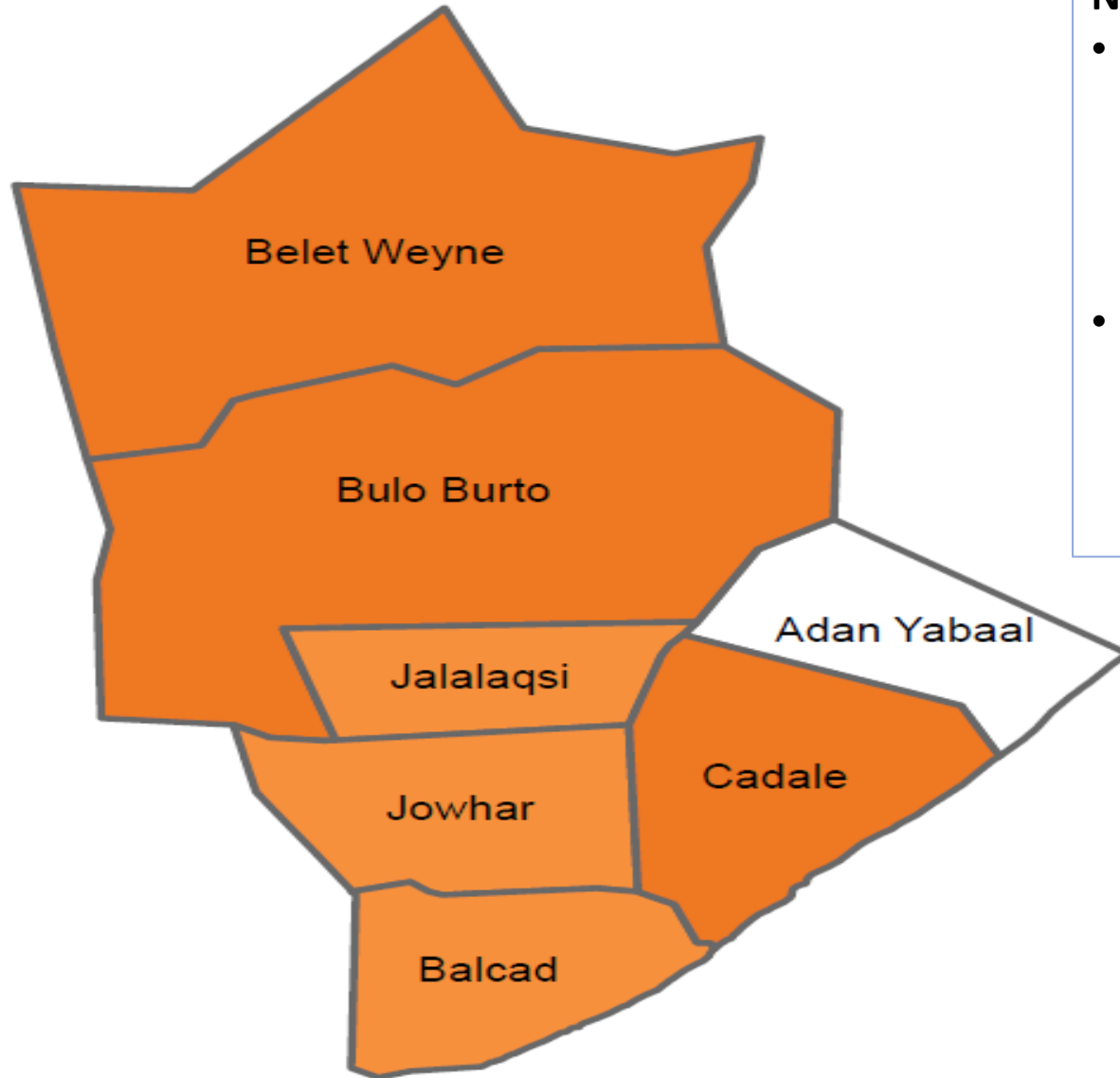
The IASC defines Accountability to Affected People as “an active commitment to use power responsibly by taking account of, giving account to, and being held to account by the people humanitarian organizations seek to assist. The FSC is committed to promoting and advocating to its partners, the importance of AAP integration through trainings and information sharing.

### **Action Plan**

- Build the capacity of FSC partners through trainings in cross-cutting issues to help frontline staff better understand, integrate and implement standards and ensure affected population are served with dignity.
- Information sharing relating to gender, protection and disability as received from Protection Cluster.

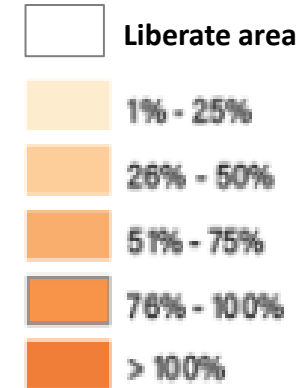
# FSC Partner Response Overview 2022

## 2022 overview dashboard



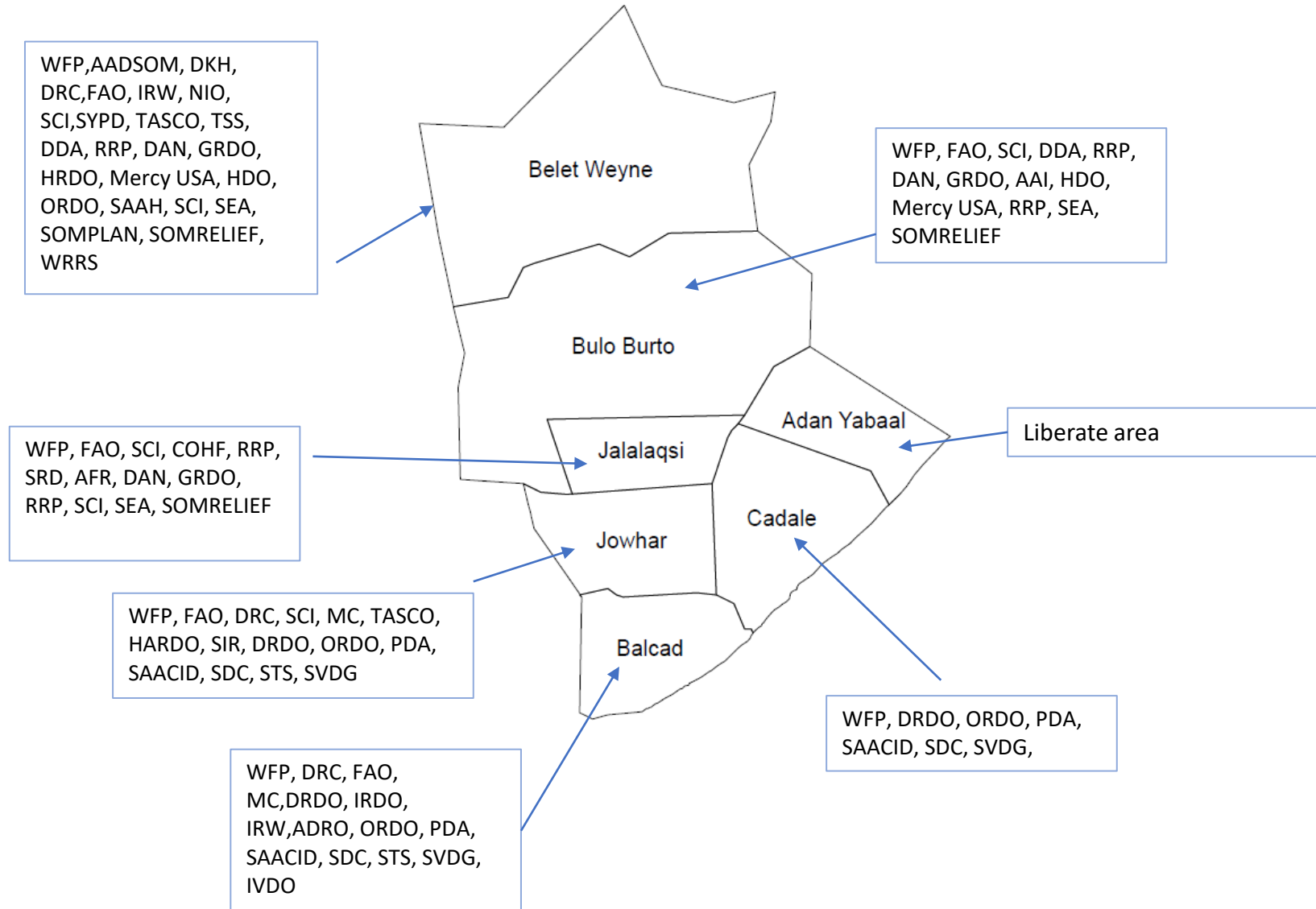
### Note:

- Adan Yabaal is a recently liberated district where vulnerable people are calling for immediate assistance. Partners are therefore encouraged to immediately reach people in this district with food assistance.
- All districts in Hirshabelle had 100% response against the target in 2022 except Jowhar where there was 9% gap and Adan Yabaal which is was mostly inaccessible in 2022.



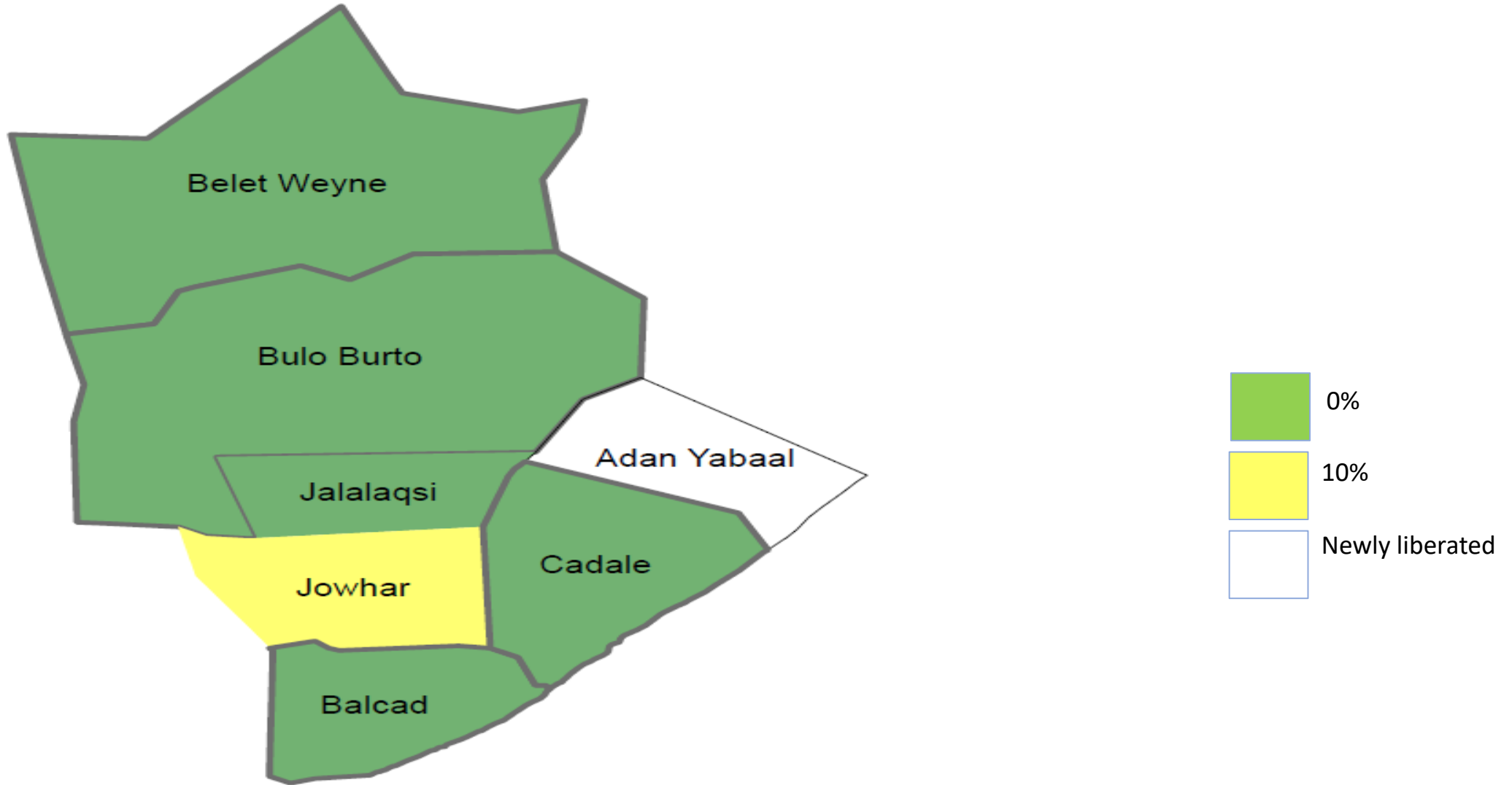
# FSC Partner Response Overview 2022

## Partner presence map



# FSC Partner Response Overview 2022

## Gap analysis



# Regional and State-Level Meeting Plan 2023

## FSC Hirshabelle State and Regional Coordination Meeting Schedule - 2023

January							February							March							April						
Su	Mo	Tu	We	Th	Fr	Sa	Su	Mo	Tu	We	Th	Fr	Sa	Su	Mo	Tu	We	Th	Fr	Sa	Su	Mo	Tu	We	Th	Fr	Sa
1	2	3	4	5	6	7				1	2	3	4				1	2	3	4							1
8	9	10	11	12	13	14	5	6	7	8	9	10	11	5	6	7	8	9	10	11	2	3	4	5	6	7	8
15	16	17	18	19	20	21	12	13	14	15	16	17	18	12	13	14	15	16	17	18	9	10	11	12	13	14	15
22	23	24	25	26	27	28	19	20	21	22	23	24	25	19	20	21	22	23	24	25	16	17	18	19	20	21	22
29	30	31					26	27	28					26	27	28	29	30	31		23	24	25	26	27	28	29
																					30						

May							June							July							August						
Su	Mo	Tu	We	Th	Fr	Sa	Su	Mo	Tu	We	Th	Fr	Sa	Su	Mo	Tu	We	Th	Fr	Sa	Su	Mo	Tu	We	Th	Fr	Sa
	1	2	3	4	5	6					1	2	3							1			1	2	3	4	5
7	8	9	10	11	12	13	4	5	6	7	8	9	10	2	3	4	5	6	7	8	6	7	8	9	10	11	12
14	15	16	17	18	19	20	11	12	13	14	15	16	17	9	10	11	12	13	14	15	13	14	15	16	17	18	19
21	22	23	24	25	26	27	18	19	20	21	22	23	24	16	17	18	19	20	21	22	20	21	22	23	24	25	26
28	29	30	31				25	26	27	28	29	30		23	24	25	26	27	28	29	27	28	29	30	31		
														30	31												

September							October							November							December						
Su	Mo	Tu	We	Th	Fr	Sa	Su	Mo	Tu	We	Th	Fr	Sa	Su	Mo	Tu	We	Th	Fr	Sa	Su	Mo	Tu	We	Th	Fr	Sa
					1	2	1	2	3	4	5	6	7				1	2	3	4						1	2
3	4	5	6	7	8	9	8	9	10	11	12	13	14	5	6	7	8	9	10	11	3	4	5	6	7	8	9
10	11	12	13	14	15	16	15	16	17	18	19	20	21	12	13	14	15	16	17	18	10	11	12	13	14	15	16
17	18	19	20	21	22	23	22	23	24	25	26	27	28	19	20	21	22	23	24	25	17	18	19	20	21	22	23
24	25	26	27	28	29	30	29	30	31					26	27	28	29	30			24	25	26	27	28	29	30
																					31						

 UN Holiday  
 Hirshabelle State Meeting: (10:00AM-11:30AM)  
 Hiran Regional Meeting: (2:00PM-3:30PM)  
 Middle Shabelle Regional Meeting: (10:00AM-11:30AM)

## Next Meetings

- **Hiran RCM:** 7th February 2023 (2:00PM-3:30PM)
- **Middle Shabelle RCM:** 8th February 2023 (10:00AM-11:30PM)
- **Hirshabelle SCM:** 14th February 2023 (10:00AM-11:30AM)



THANK YOU

