

# Food Security Cluster Coordination Meeting Hiran Region

6-June-2023

# Agenda

1. Introduction and Opening Remarks
2. Review of Action Points from Previous Meeting
3. Flood Response Update – FSC
4. Weather Forecast and Floods Update – FAO-SWALIM
5. Partner updates (Flood response, challenges, and gaps)
6. AOB

# Introductions and Opening Remarks

# Review of previous meeting's action points

- FSC to share FAO SWALIM presentation. – **DONE**
- FSC to share FAO SWALIM presentation to all partners. – **DONE**
- As agreed, Mercy USA will present food security activities in Hiran region June 2023 as planned. –

## **POSTPONED**

- Partners to coordinate with the FCS before they start implementation to overcome resource overlap/duplication. – **ONGOING**

# Flood Response Update – FSC

# Flood Response Update – FSC

1. Water level in Beletweyne is increasing again (7.60m today) due to water coming from the Ethiopian highlands, this may lead to a second wave of flooding.
2. Bolo Burte district is also flooded with an estimated 13,000 households affected with farmlands destroyed. Jalalaqsi also has been affected but not clear information yet.
3. Currently, flood water in Beletweyne town have receded and many areas now becoming passable as before the floods.
4. SoDMA reported they were expecting 50 truckload of food relief items, though still not clear on the status of this implementation.
5. Partners with resources to respond to the flood disaster and not already captured by the FSC should kindly share urgently.

# Flood Response Update – FSC

## Beletweyne Flood Response Mapping - Food Security Cluster

No.	Organization	Activity Type	Beneficiaries HH
1	Action Aid	Emergency Cash Transfer	2,850
2	DRC	Emergency Cash Transfer	3,000
3	FAO	Emergency Cash Transfer	4,256
4	ICRC	Emergency Cash Transfer	1,106
5	Qatar Charity	in-Kind Food	3,200
6	WFP	Emergency Cash Transfer	5,236
7	WFP	High Energy Biscuits	9,900
8	WFP	in-Kind Food	1,646
			<b>31,194</b>

Weather Forecast and  
Floods Update –  
FAO-SWALIM





Food and Agriculture Organization  
of the United Nations

# Weather Review, Forecast and Flood Update for Hiraan Region

*06 June 2023*

---

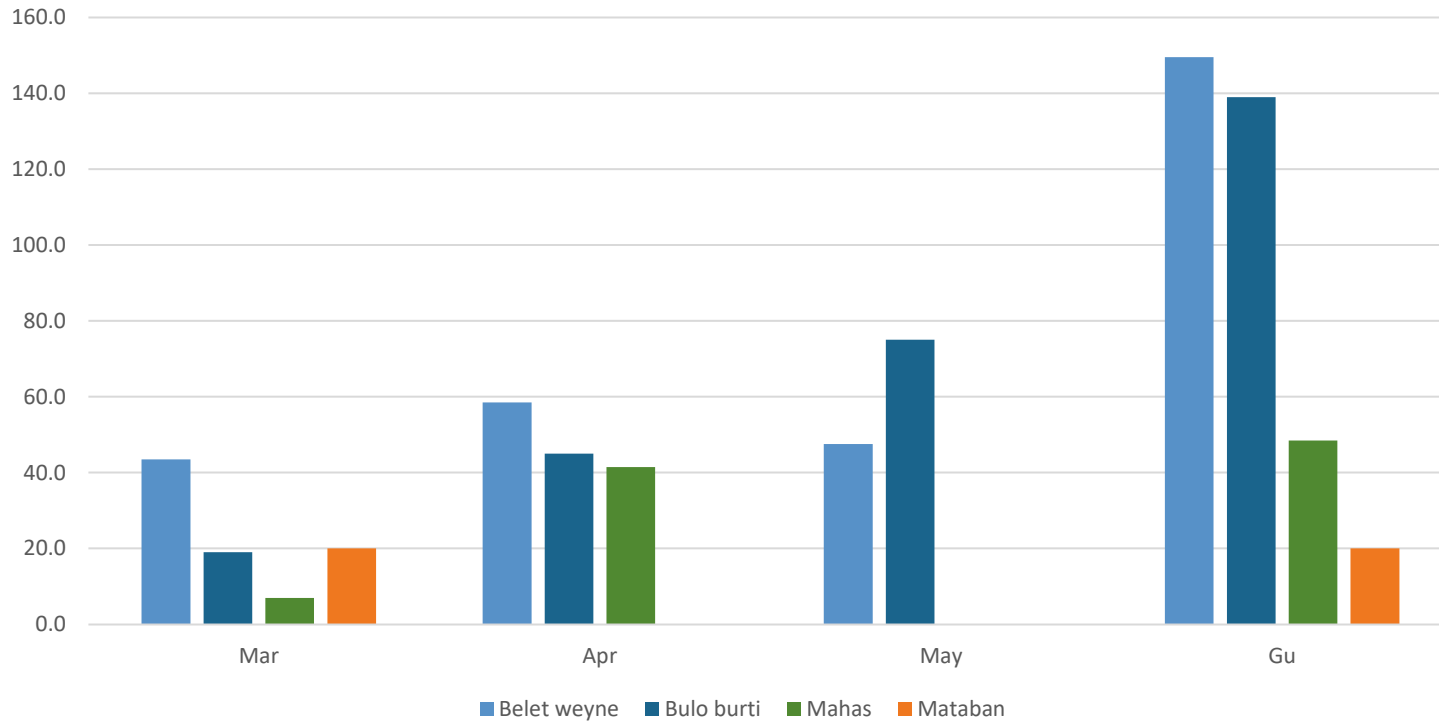
**Bethwel K. Mutai, Saeed Mohamed & Omar Sabrie Olad**

**FAO/SWALIM**



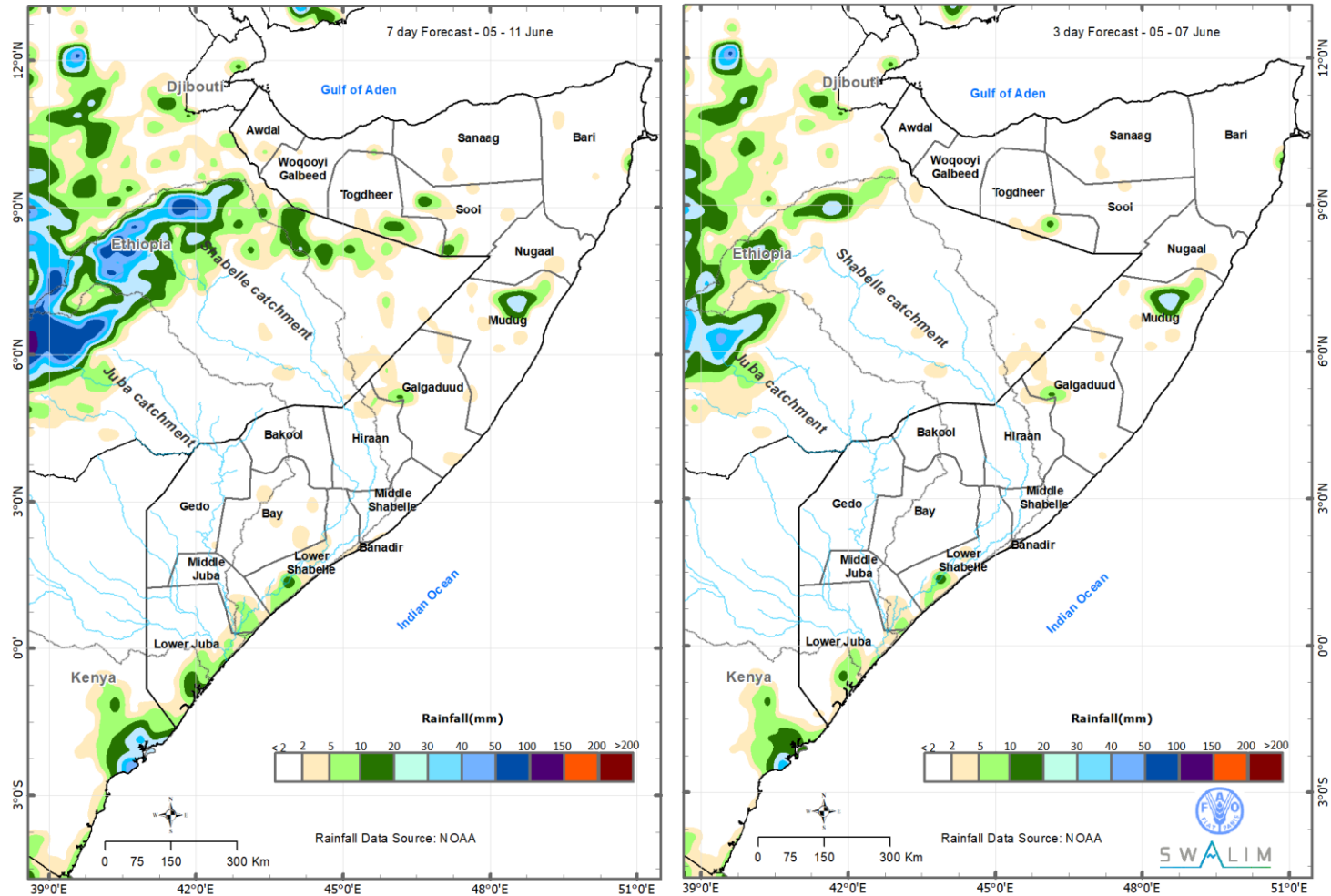
## Past and Present Weather

Monthly and Seasonal (2023) Rainfall over Stations in Hiraan Region



- Only BW and BB received rainfall in May 2023
- No rainfall has been received in the June 2023
- The Gu seasonal rainfall totals over Hiraan are:
  - Belet Weyne (149.5 mm)
  - Bulo Burte (139.0 mm)
  - Mahas (48.5 mm)
  - Mataban (20.0 mm)

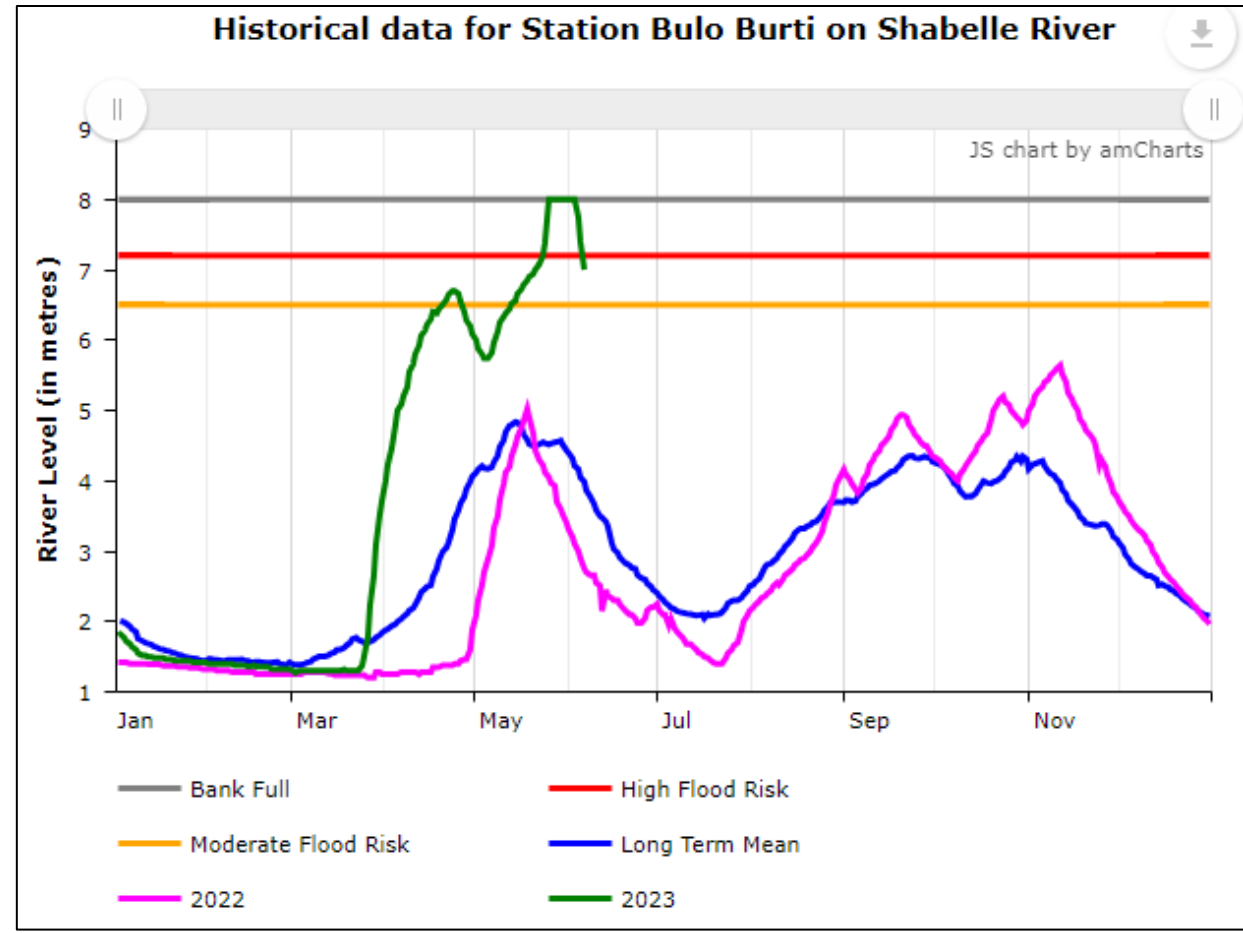
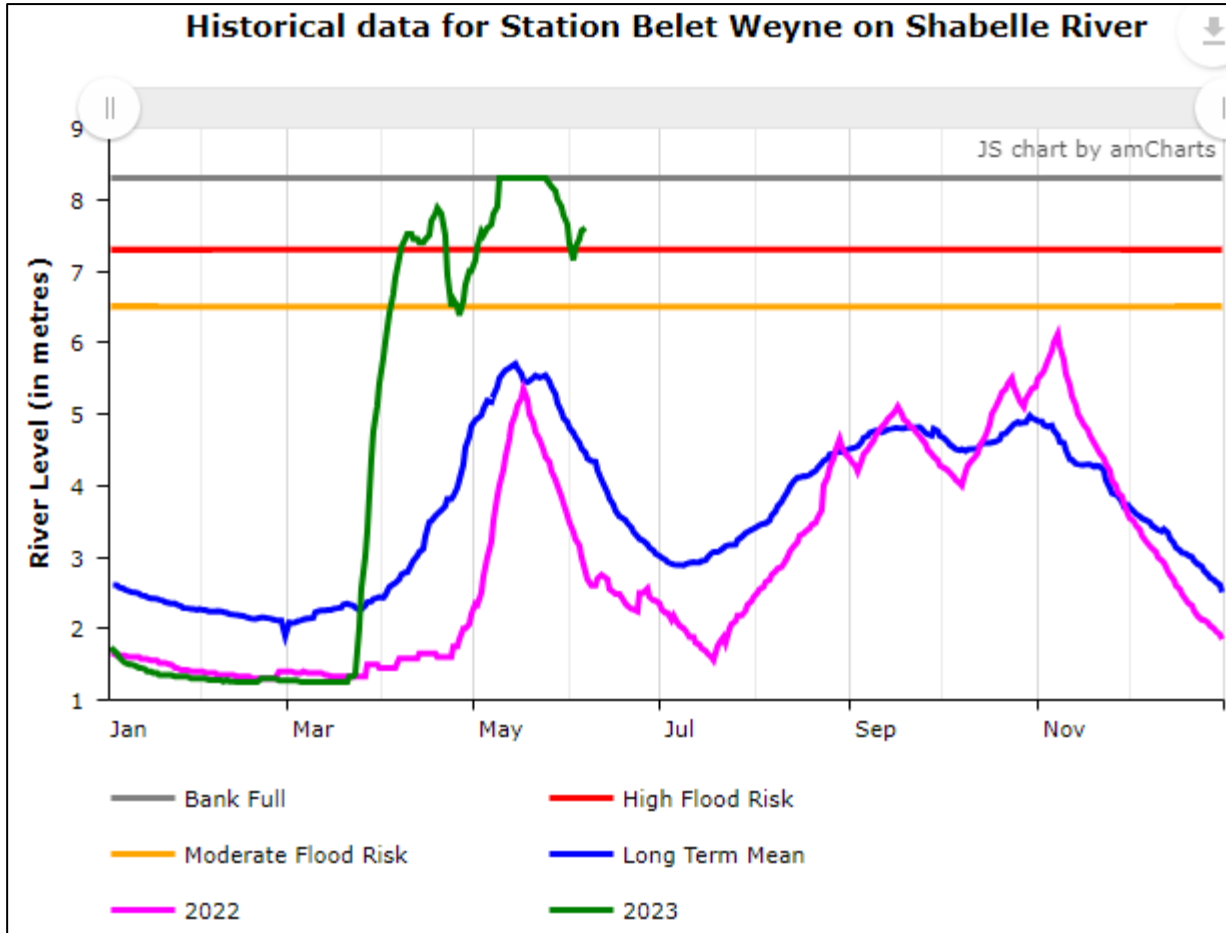
## Weather Forecast for 5 – 11 June; 5 – 8 June 2023



- The rainfall forecast for the last week (31<sup>st</sup> May – 7<sup>th</sup> June) indicated light rains of less than 30 mm over Belet Weyne and Jalalaqsi districts in Hiraan region
- Dry conditions are forecast over Hiraan region between 5<sup>th</sup> and 11<sup>th</sup> June [left] and between 5<sup>th</sup> and 8<sup>th</sup> June 2023 [right]



# Shabele River Flood Update: @ Belet Weyne and @ Bulo Burte





## Shabele River Flood Update: WARNING

- The river level at BB reached its bankful height since May 25<sup>th</sup> to date and caused overbank spillage and flooding in Indha Ceel, Bog Abeso, and Wadajir villages; The flood waters also rendered the BB bridge inaccessible
- In Jalalaqsi the river reached bankful level on May 26<sup>th</sup>, overflowing the bridge and causing floods in Wadajir Horseed, Howl Wadag and Gumarey villages
- With more water flowing from upstream, the bankful level in the two locations and surrounding areas is expected to be sustained
- A flood wave that had been reported at Bur Ukur in Ethiopia, about 45 km upstream of BW led to a rise in the river levels after 24 to 48 hours with any sign of flooding
- A flood wave that has been sighted at Ba,aad village 18km north of BW district that is likely to increase river discharge with no chance of flooding
- Since the river level at BW is still above the high flood risk level, continues monitoring of rainfall over its catchment in Ethiopian Highlands is crucial
- Therefore, a **HIGH-RISK FLOOD WARNING** is still in effect for Belet Weyne, Bulo Burte, Jalalaqsi and the adjacent areas.



## Shabele River Flood Update: TAKING EARLY ACTION SAVES LIVES

- Residents of Belet Weyne town and its surrounding areas should be on the lookout for potential flooding
- The residents of the currently flooded areas as well as the flood-prone areas in Bulo Burte and Jalalaqsi districts should move to higher ground, as floods continue to extend
- Residents in these areas who receive this flood warning information should pass it on to family, friends, and neighbors, securing property, and considering assembling an emergency kit with necessary supplies.
- Residents of Belet Weyne, Bulo Burte and Jalalaqsi are also strongly recommended to stay informed through regular bulletin updates at specified times, monitor through radio, television, and internet for flood warnings



## Impacts of Floods in Pictures:



## Impacts of Past and Forecast Weather



Generally, light rains to dry conditions are expected in Hiraan, with light rains forecast over Shabelle River catchment in Ethiopian highlands



Although Shabelle River at BW and BB are still above high and moderate flood risk level, respectively, the levels are expected to stabilize below moderate flood risk levels in the coming days given the above forecast light rains to dry conditions



Although the expected isolated light rains over isolated areas in Hiraan will lead to partial substantial recharge of surface water sources, high temperatures will lead to evapotranspiration thereby reducing the soil moisture



Depending on the length of the dry conditions, low soil moisture may affect the regenerated vegetation which is important for human and livestock survival



The light rains and dry conditions have implications on the management of crops at various vegetative stages





# Mahadsanid! Thank You



[www.faoswalim.org](http://www.faoswalim.org)

Partner updates

(flood response, challenges,  
and gaps)

## Next Meetings

- **Hiran RCM: 4th July 2023 (2:00PM-3:30PM)**
- **Middle Shabelle RCM: 7th June 2023 (10:00AM-11:30AM)**
- **Hirshabelle SCM: 13th June 2023 (10:00AM-11:30AM)**

THANK YOU

