

# Food Security Cluster Coordination Meeting Hiran Region

2-May-2023

# Agenda

1. Introduction and Opening Remarks
2. Review of Action Points from Previous Meeting
3. Food Security Projects in Hiran – SOMRELIEF Presentation
4. Partner updates (Flood response, challenges, and gaps)
5. Current Flood Situation and Weather Forecast - FAO SWALIM
6. AOB

# Opening Remarks

# Review of previous meeting's action points

- FSC to share FAO SWALIM presentation. – **DONE**
- SOMRELIEF to present their Food Security activities in the next meeting. – **TODAY**
- Partners to coordinate with the FSC before they start implementation to overcome resource overlap/duplication. – **ONGOING**

Food Security Projects in  
Hiran – SOMRELIEF  
Presentation



World Food Programme

# SomRelief.Org

Somali Relief Organization

Helping. Healing. Caring.

Beletweyne Field Office Somalia Country Office

January 2023

# Modalities

WFP PARTNER IMPLEMENTING RELIEF PROJECT IN BELETWEIN DISTRICT.

- 1) IN KIND FOOD
- 2) VOUCHER TOP UP
- 3) MOBILE MONEY TRANSFERS

# Beneficiaries

- 1) VOUCHERS TOP UP HHS 2195
- 2) MMT HHS 1635
- 3) IN KIND HHS 1639



# Target locations

- 1) 45 IDPS IN BELETWEIN DISTRICT
- 2) HOST COMMUNITIES

# Challenges

- 1) [ THE NEEDS ARE MORE THAN THE AVAILABLE RESOURCE]
- 2) DUPLICATION
- 3) MMT DELAYS

# lessons learnt

- 1) EFFECTIVE COMMUNICATION THROUGHOUT THE PROJECT CIRCLE IS ESSENTIAL FOR SMOOTH IMPLEMENTATION.]

**THE END**

**THANK YOU**

Partner updates

(flood response, challenges,  
and gaps)

# Flood alerts in Hiran Region

## – FAO SWALIM



Food and Agriculture Organization  
of the United Nations

# Rainfall and Flood Update in Somalia

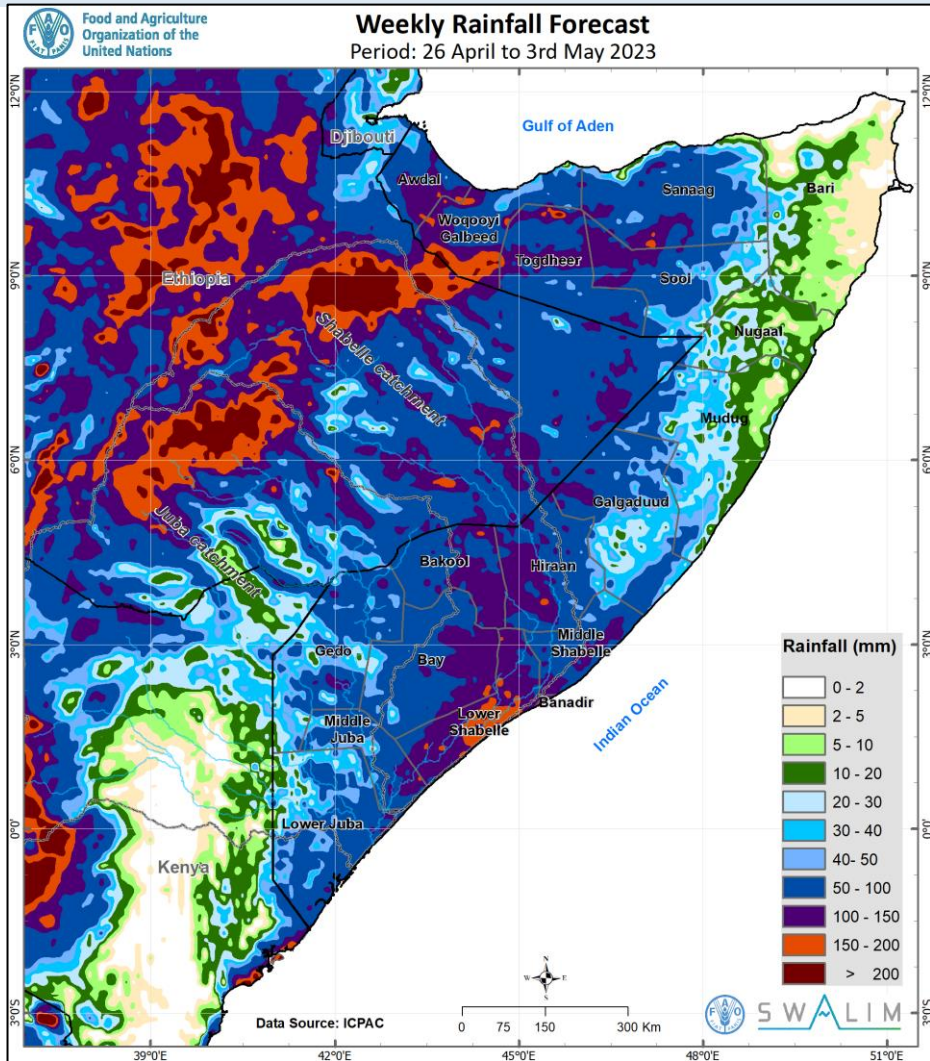
*02 May 2023*

---

**Mohamed Saeed & Omar Sabrie Olad**

**FAO/SWALIM**

## Past Weather and Next Week Forecast

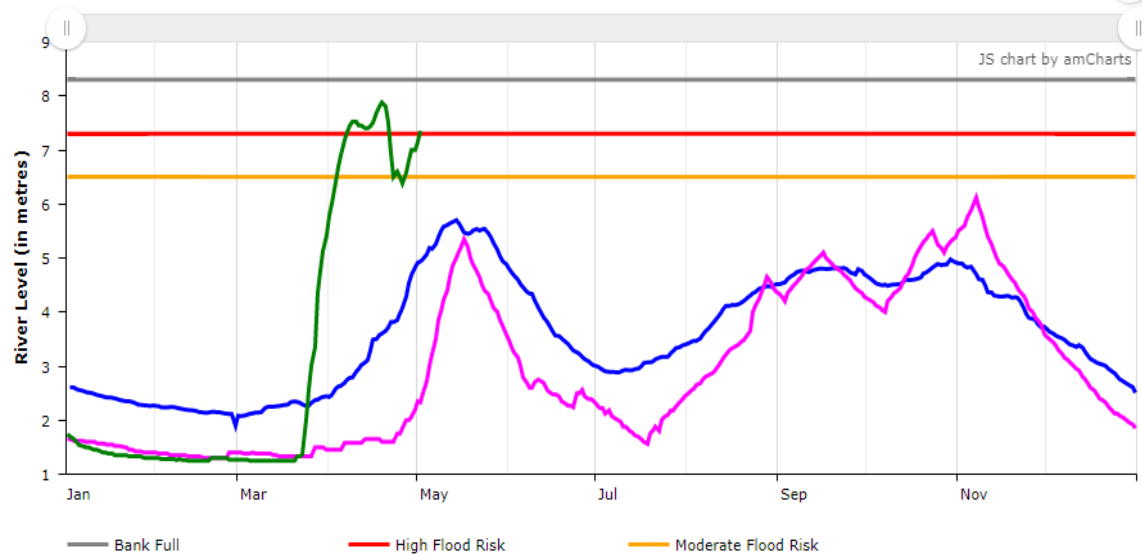


- **Past Weather:** Moderate rains were recorded over several parts of the country
- **Forecast up to 3<sup>rd</sup> May:** Moderate to heavy rainfall is expected over several areas in southern, central and northwestern parts of Somalia with dry conditions only in the northeastern coastal areas
  - **Very heavy rainfall** is expected over:
    - several areas in the central part of Lower Shabelle
    - southern border between Gebiley and Hargeisa
    - isolated areas in northeastern parts of Ceel Barde
    - southern parts of Bulo Burti district
    - southern border between Ceel Afweyn and Ceerigabo
    - Sheikh district, and
    - Baki district

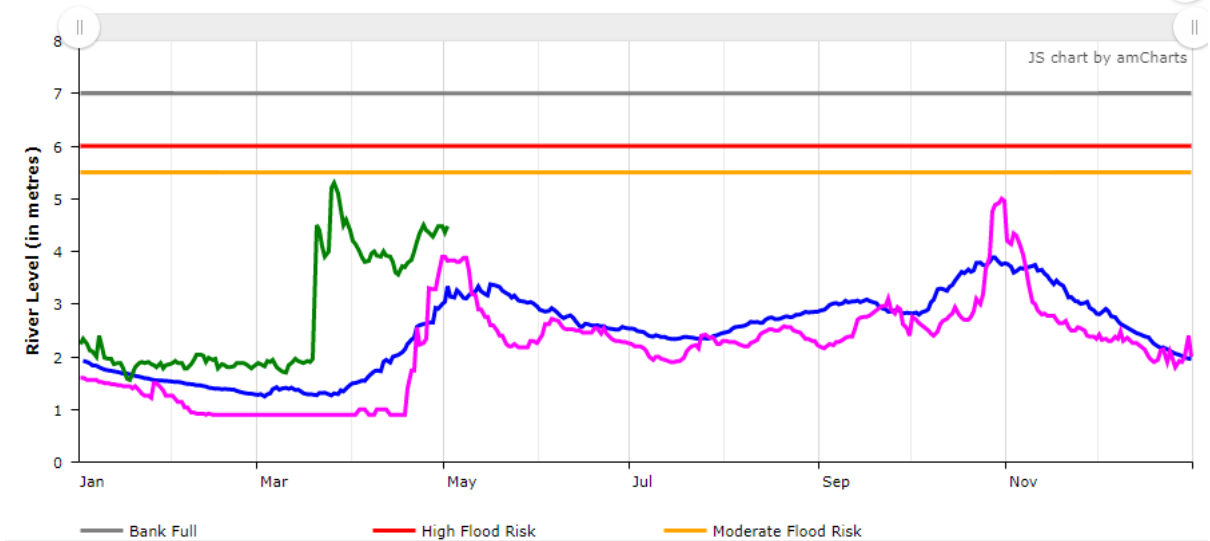


## Shabelle & Juba River Levels

Historical data for Station Belet Weyne on Shabelle River



Historical data for Station Luuq on Jubba River



- Currently river level along Jubba and Shabelle are above average for this period of the year with moderate risk of flooding along the Shebelle river.
- Levels along the 2 rivers are expected to rise in the coming week, given the ongoing rains within Ethiopian highlands.



River	Station	Date	Observed River Level (m)	Moderate Risk Levels (m)	High Risk Levels (m)	Bankfull (m)
Jubba River	Dollow	02-05-2023	4.90	4.50	5.00	6.00
Jubba River	Luuq	02-05-2023	4.48	5.50	6.00	7.00
Jubba River	Bardheere	02-05-2023	7.78	7.40	8.20	10.40
Jubba River	Bualle	02-05-2023	7.70	9.00	10.00	12.00
Shabelle River	Belet Weyne	02-05-2023	7.35	6.50	7.30	8.30
Shabelle River	Bulo Burti	02-05-2023	5.88	6.50	7.20	8.00
Shabelle River	Jowhar	02-05-2023	3.80	5.00	5.25	5.50

- There is high risk of flooding along Shabelle River at Belet Weyne
- There is moderate risk of flooding along Jubba River at Dollow and Bardheere
- Population living along the flood prone riverine areas especially in Belet Weyne and Dollow and Bardhere and the low lying inland areas expected to receive heavy rainfall must exercise caution



## Impacts of Past and Forecast Weather

- The very heavy rainfall forecast over several areas in southern and central parts of Somalia and over the catchments of both Shabelle and Juba Rivers in Ethiopian Highlands will lead to a further rise in the levels and flooding along their entire reaches. The population living in the flood prone and low lying areas along the entire reaches of both rivers should take precaution.
- The expected heavy rainfall will lead to substantial recharge of surface water sources and sustenance of the regenerated vegetation which is important for human and livestock survival
- Even with the forecast moderately high temperatures (28 °C to 32 °C), the forecast heavy rains, together with the previous rains, are likely to exceed the evaporation thereby sustaining the soil water and supporting vegetation regeneration
- These conditions are therefore favorable for planting in the central and northwestern parts of the country and late planting in the southern parts. However, the heavy rainfall may lead to disturbance of the topsoil thereby reducing its productivity.



# Mahadsanid! Thank You



[www.faoswalim.org](http://www.faoswalim.org)

## Next Meetings

- **Hiran RCM: 6th June 2023 (2:00PM-3:30PM)**
- **Middle Shabelle RCM: 3rd May 2023 (10:00AM-11:30AM)**
- **Hirshabelle SCM: 9th May 2023 (10:00AM-11:30AM)**

THANK YOU

