



FLOOD UPDATES

May 2022 to Date

SEMA

WWW.YOBESEMA.COM

GENERAL OVERVIEW OF FLOOD INCIDENCES ACROSS THE STATE

TABLE OF CONTENT



- 01 INTRODUCTION
- 02 LGAs AFFECTED
- 03 ASSESEMENT
- 04 SUPPORT
- 05 Gaps/Challenges
- 06 INDIVIDUALS



Introduction

Following a report of a heavy windstorm (April 2022) and downpour in Yobe state from May 2022 to Date, with over 180 communities across 17 LGAs reported cases of flood, windstorm with displacement, loss of lives, food, NFI, livestock and destruction of buildings and farmlands worth millions of naira.

In worse hit locations, Gujba and Gulani this magnitude of flood is the worse in recent years. Yobe State Government through the state and LGA support, have responded in one way or the other in supporting the victims, evacuation of victims and resettlement of those who are in critical need of shelter in public budlings and host communities.

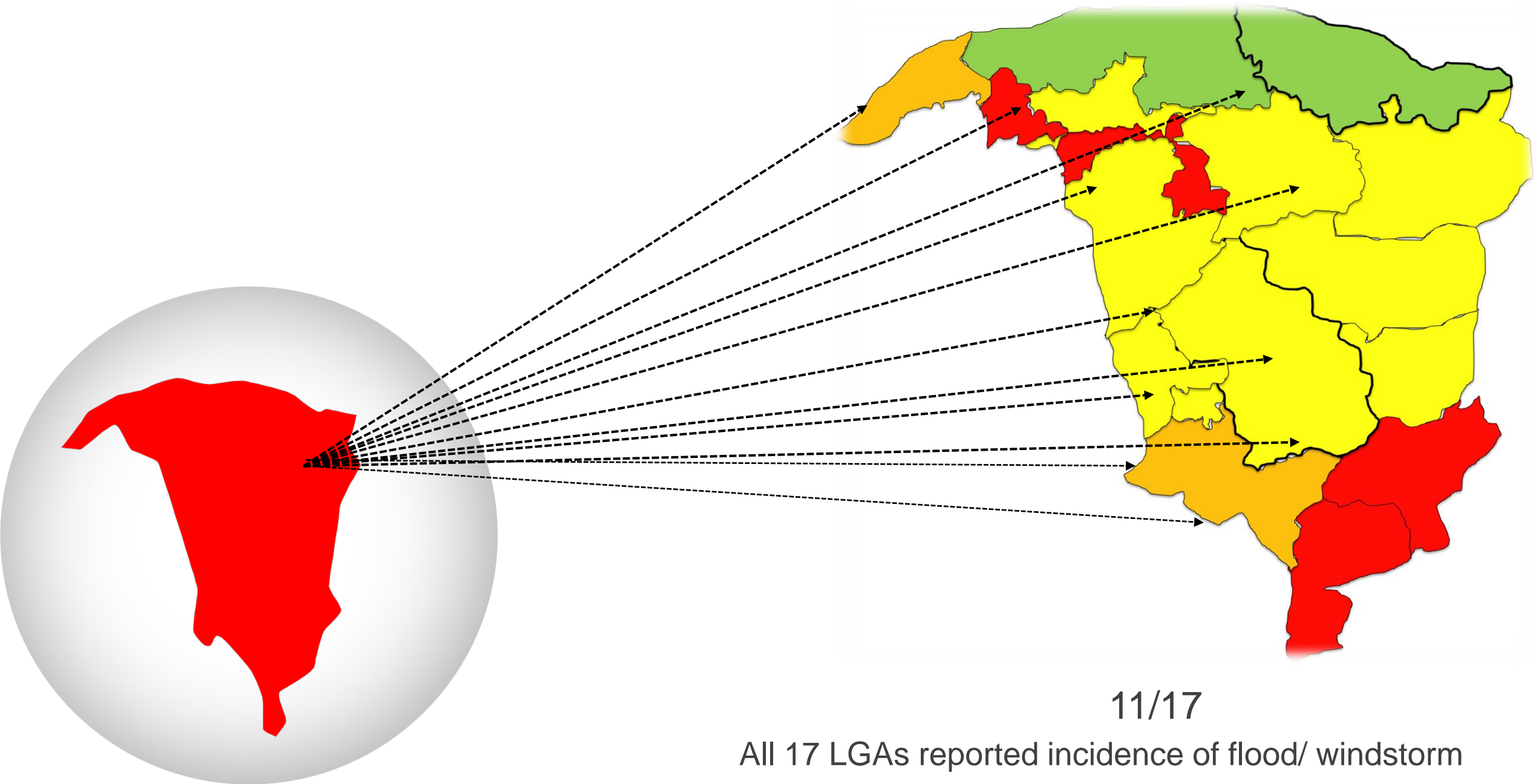
His Excellency Governor Mai Mala Buni visited the scene, engaged NEMA, FERMA and FM-HADMSD and also directed immediate supply of food basket to displaced communities and free medical attention to victims.

While this is done, the magnitude of the disaster is high and needs for multisectoral, interagency and more robust resource mobilization to cushion the hardship victims are undergoing.

Already 2 bridge in Gulani LGA and Katarko bridge are completely disconnected with the rest of the state and Country, but of good news is the immediate steps are taken by Yobe State Government to improvised alternate route by constructing foldable bridge in partnership with Nigerian Army in Gulani and MOW is reconnecting the Katarko Bridge, work has since commenced.

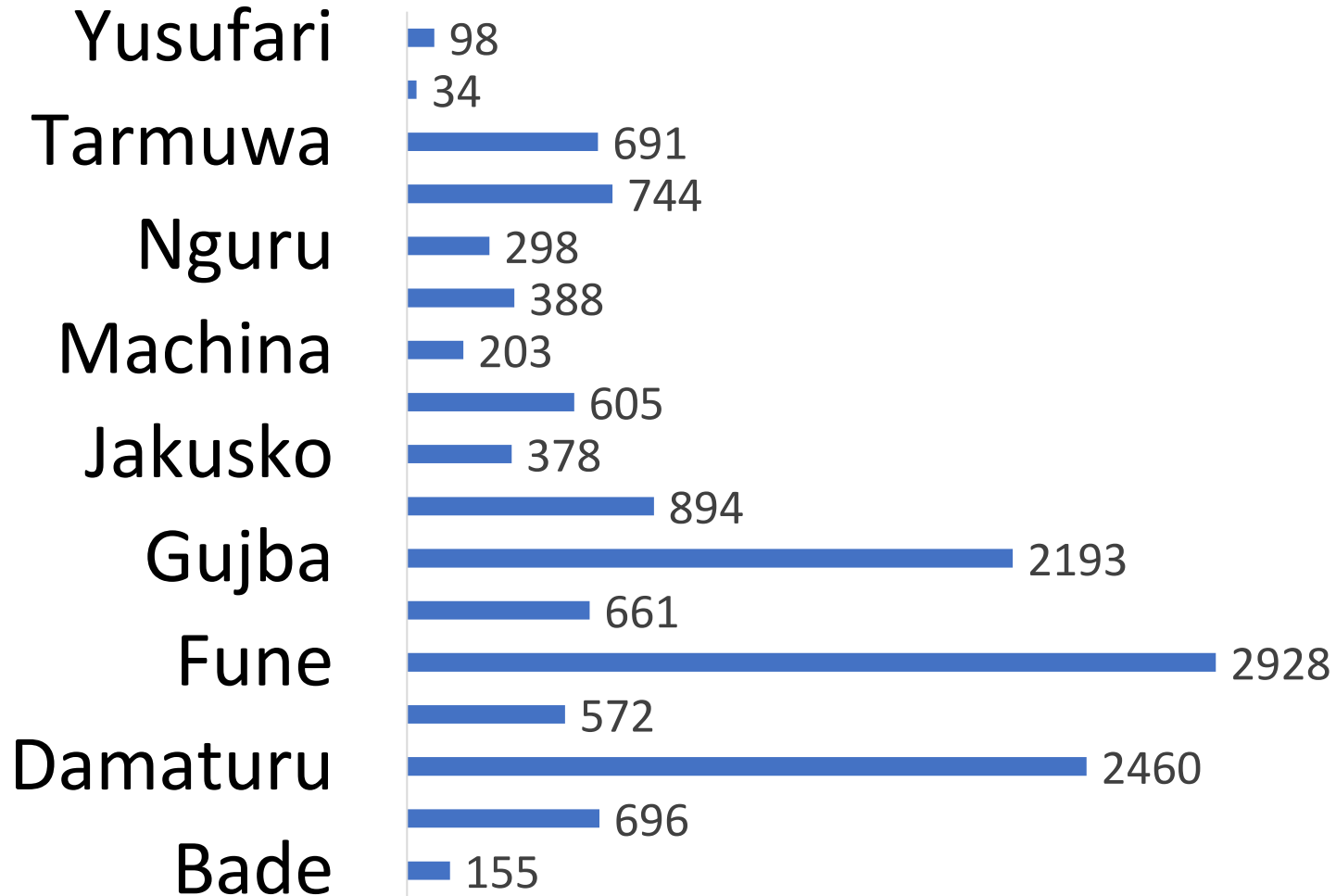
There is a need for the community leaders to carry out some precautionary measures by prompt clearing of blocked drainages, sand embarkments which will reduce the flood impact, and also the need for the LGA to create awareness and sensitization on the dangers of flood, and also to strict adherence to Early Warning Early Response (EWER) concept as part of long term strategy.

Severity of LGAs affected by Flood and Windstorm



HOUSEHOLDS AFFECTED BY FLOOD AND REPORTED

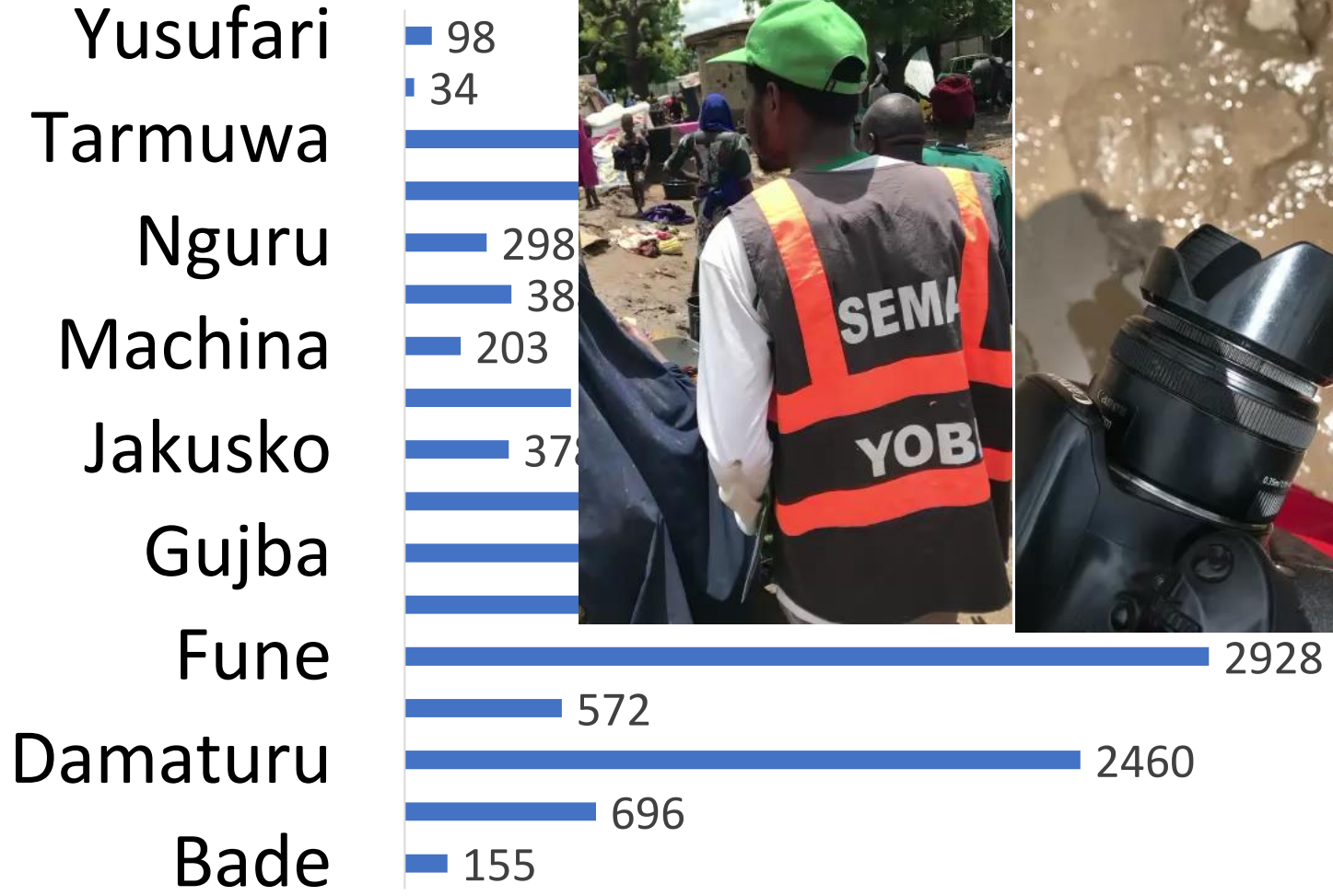
HOUSEHOLDS AFFECTED



HOUSEHOLDS AFFECTED BY FLOOD AND REPORTED



HOUSEHOLDS



Gulani

894 HH



Gujba

2193 HH



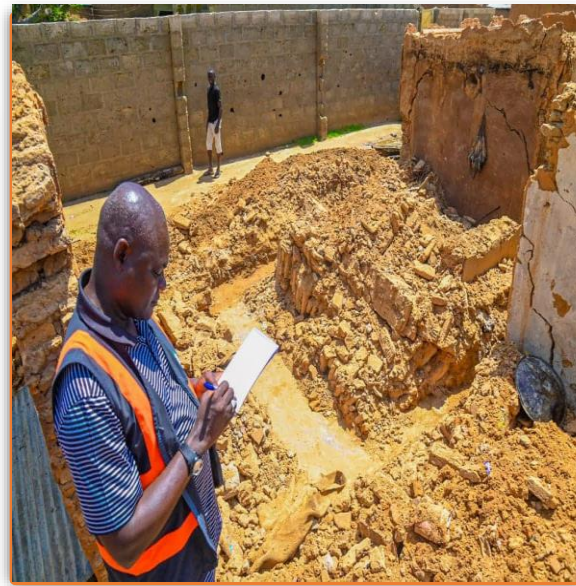
Damaturu

2460 HH

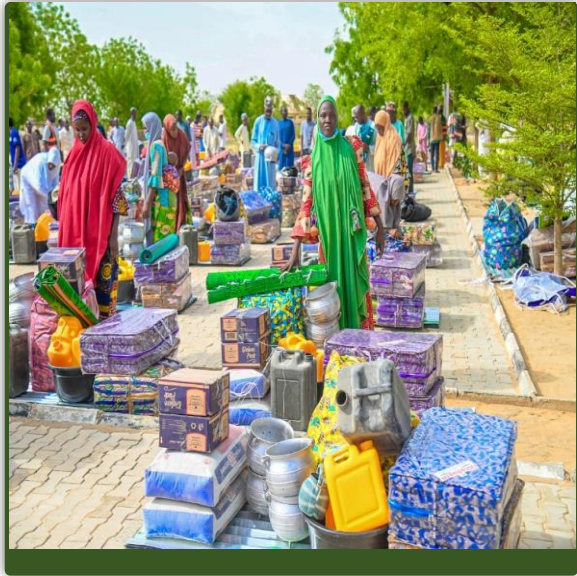


GEIDAM

661 HH



DAMATUR U





Save the Children

1,300 HH CASH,
33,000 FOR 5
MONTHS



1,300 HH
1 Year Health Care Coverage





Gaps/Challenges



Resource availability/needs

Response is based on available resources with priorities to medical needs and evacuation in worse hit locations



Magnitude of emergency

Depending on the level of destruction, more multisectoral and interagency approach is needed to respond to ongoing disaster
MUTAI is currently the worse location needed multisectoral approach



First line support

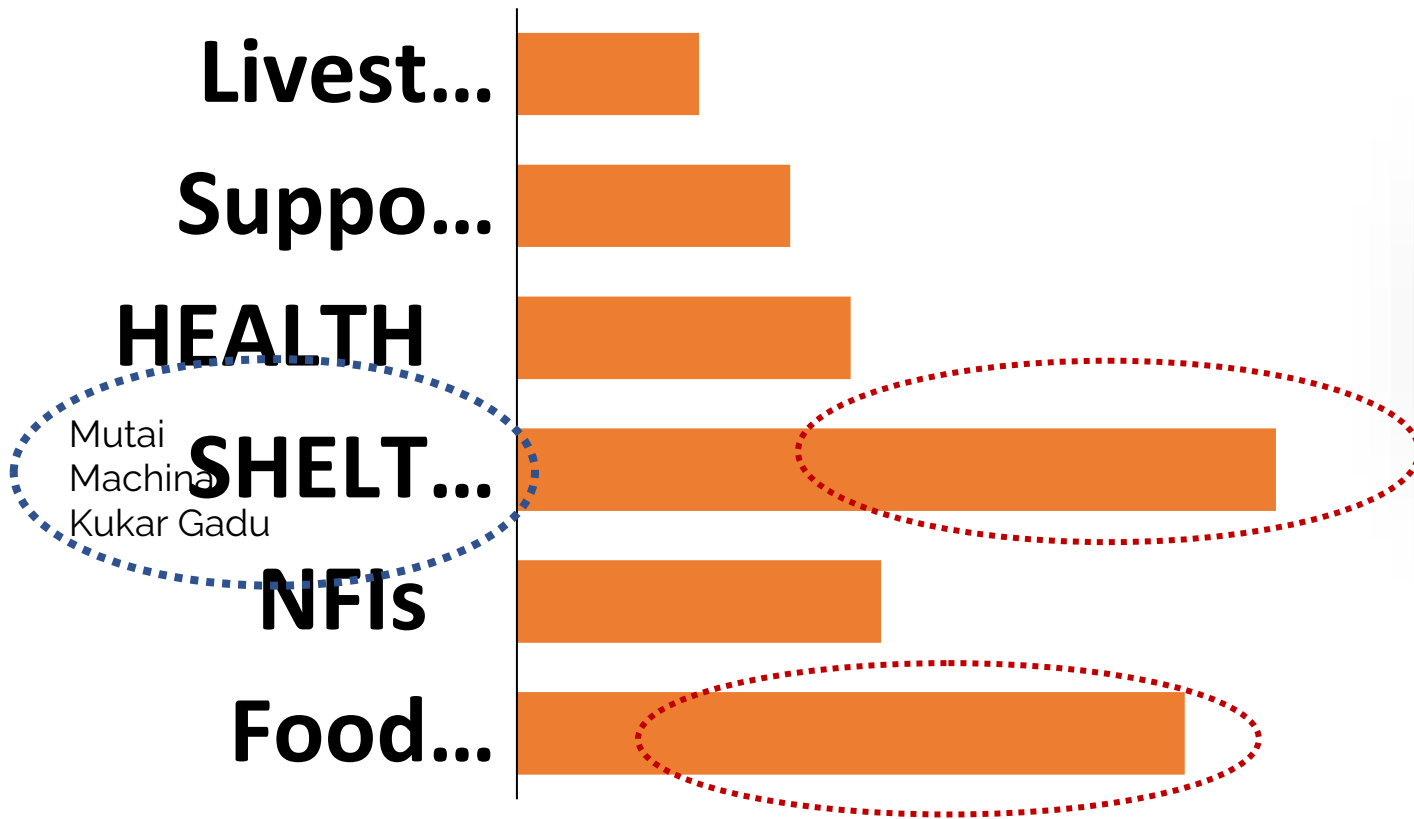
Food basket is the first line support after medical, timely delivery of the first line also reduces the burden of disaster



Join Assessment

Join assessment and resource mobilization is currently on pipeline with OCHA and FOA supporting the state in leading the assessment

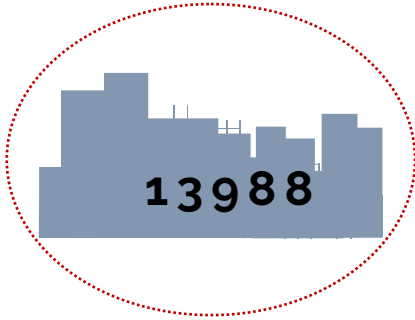
Level of Needs



SECTOR SPECIFIC NEEDS/PARTNERS SUPPORT



1. Mud Blocks-Bricks
2. Roofing Zink
3. Trampoline
4. All kinds of NFIs
5. WASH kits



Households Affected by Flood across the 17 LGAs



1. WFP- Food Items
2. AAH-NFIs/ BM
3. SCI-CASH/NFIs
4. UNFPA-Hygiene Kits

Over 6988 HH are currently in need of Food Item



895++ LOSS Access to farmlands

