

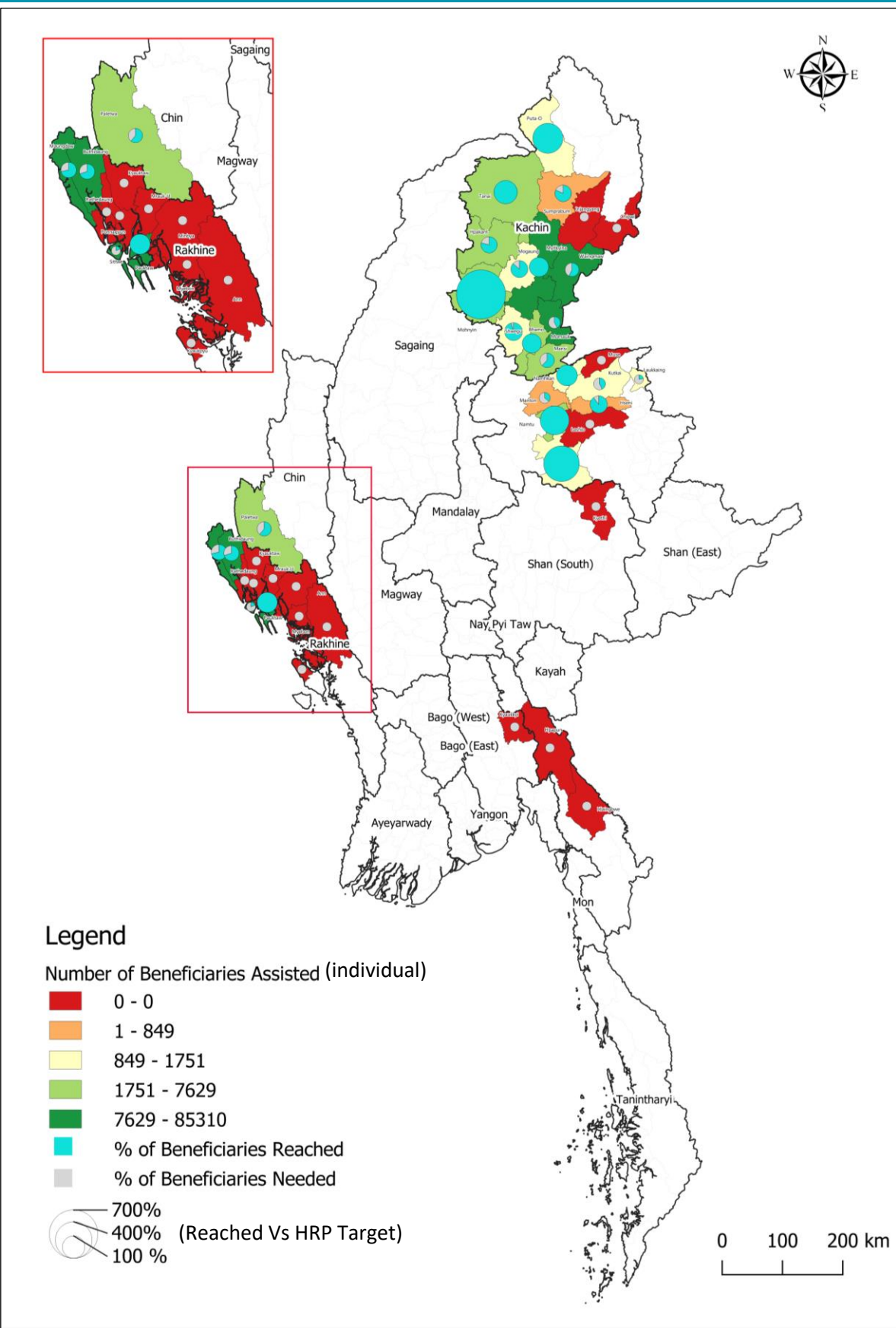
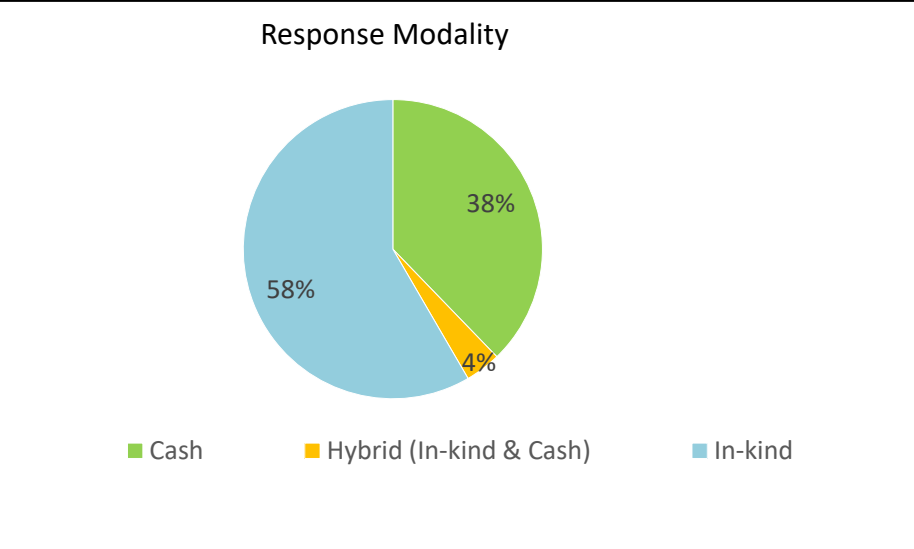
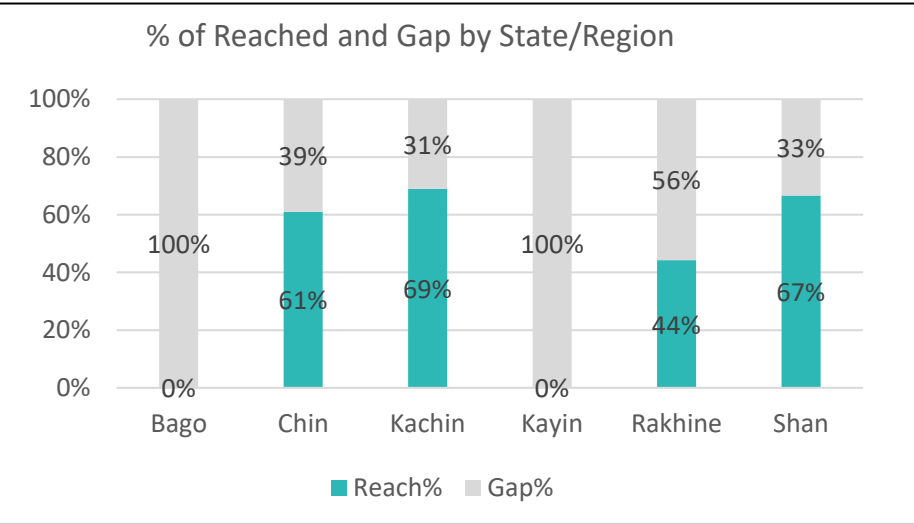
MYANMAR: FSS Gap Analysis – SO 1 Food Assistance*

January to May 2021 *This map is based on data available at Township level. Information visualized on this map is based on data collected from 31 of partners which shared the 5Ws reports.

Highlights

• Total 16 Townships (Kyaukkyi Township in Bago Region, Chipwi and Injanyang Township in Kachin State, Hlaingbwe and Hpapun Townships in Kayin State, Kyethi, Larshio and Muse Townships in Shan State, and Kyauktaw, Mrauk-U, Minbya, Myebon, Ann, Ponnagyun and Rathedaung Townships in Rakhine State) have not been reached while achievements in some other 9 townships (Putu-O, Bhamo, Myitkyina, Tanai and Mohnyin Townships in Kachin State, Pauktaw Township in Rakhine State, Namhkan, Namtu, Hsipaw Townships in Shan State) are beyond the targets as defined in HRP 2021. These townships require more accurate FSS coordination at ward/village level to avoid duplication while townships not being assisted require a specific attention from FSS partners.

Total Numbers of Implementing Partners **15**



KEY FACTS & FIGURES

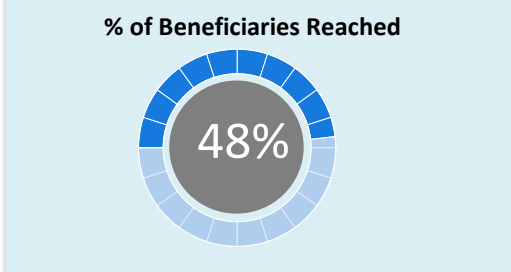
- PEOPLE IN NEED**
583 K
- PEOPLE TARGETED**
514 K
- PEOPLE REACHED**
248 K

48% 52%

Types of Beneficiary Reached

Returnees	23, 0.01%
Non-displacement Stateless People in Rakhine State	125912, 51%
Internally Displaced Persons	72325, 29%
Host/Local Community	49782, 20%

CASH BASED TRANSFER
\$ 1.2 M



GAP Total
266 K