



SOUTH SUDAN
**Food Security &
Livelihoods Cluster**
Strengthening Humanitarian Response



*FSL Cluster Partners'
Meeting, Juba
8th June, 2022*

Moldova Island displaced population, Duk Island, Dec 2021

Agenda

FSLC Meeting



Chair: Isaac (FSLC)

1. **“Best practice on Strengthening Seed Systems – 6 varieties of Sorghum through Crop Adaptive Trials”** – Abrham Agilo (WVSS)
2. **FSNMS Round 28 Planning** – Bakri Osman (VAM Unit, WFP)
3. **Agriculture Extension Services & Annual Training Calendar** – Morris Tabiano (FAO)

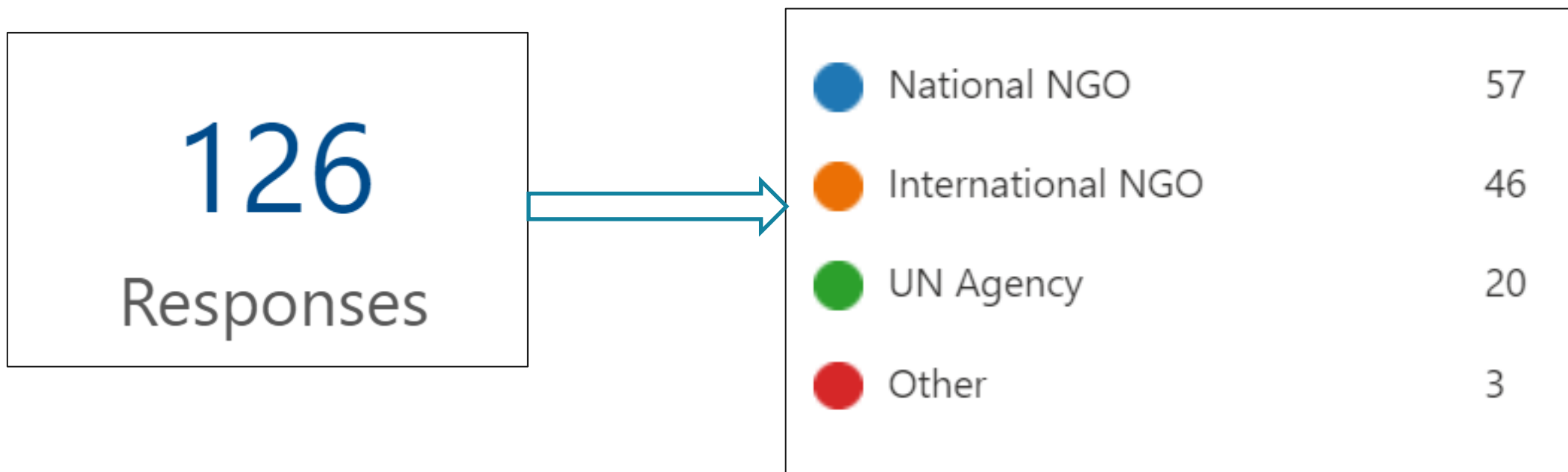
FSLC updates:

- **GCCG’s bilateral meeting with FSL Cluster Partners** – Isaac (FSLC)
- **Updates from Information Management** – Justus / Monika (FSLC)

AOB : Webinar on Seed Emergency Response Tool (SERT)

OBJECTIVE: *To receive feedback from partners on the topics considered priority by the communities for capacity building.*

PARTNER RESPONSE





Topic for training	Votes
Community-based seed production and supply system	95
Post-harvest- handlings	81
Crop value addition and marketing	77
Agronomy and crop production	75
Pest Management and Control	72
Establishment of Agricultural Cooperatives or Associations	71
Seed System Security/Assessment	69
Provision of agricultural extension services	67
Tree Planting and Agro-forestry	63
Soils and Water Management	61
Documentation (Print , photography and videography, Case studies)	56
Technical specifications for procurement agricultural inputs	51
Agricultural Mechanization	47
Other	16

FAO's Priority on ATWG Partners' Capacity Building

1. Agriculture Extension Service

1. Transfer of Technology
2. Enhancing knowledge,
3. Changing attitudes, behavior and
4. Improving Skills

2. Agriculture (ToT) Training Calendar – June to Dec. 2022

1. FSL Cluster's Survey on "Training Needs" – Justus, IMO (FSLC)
2. Prioritization of Training Topics
3. Identification of internal resources to conduct the training
4. Finalization of Training Calendar – 2022
5. ToT Sessions in the ATWG Meetings

TOT Training Module to train Agriculture Technical Working Group (ATWG) Partners

Annual Training Calendar - 2022

Training Topics	By When						Resource Person & Contact
	June	July	Aug.	Sept.	Oct.	Nov.	
Community-based seed Production & Supply a. Strengthening producers - individual and groups b. Seed quality assurance c. Seed processing - cleaning, treatment, packaging d. Marketing and market linkage	14 th						Maurice Mogga - FAO Maurice.Mogga@fao.org +211 9245471715
Post-Harvest Handlings a. Harvesting b. Drying c. Storage							Aliga Moses - OPEN alikaliga@gmail.com +211 927718893
Crop Value Addition and Marketing a. Enterprise identification b. Equipment and machinery c. Management d. Marketing	30 th						Tayo Alabi - EU T.ALABI@eesagroup.eu +211 925 568 086
Agronomy and Crop Production a. Land preparation b. Optimum propagation c. Timely planting d. Appropriate intercropping & seed management	7 th						Aliga Moses - OPEN alikaliga@gmail.com +211 927718893
Pest Management and Control a. Pest surveillance b. Control actions c. Application of pesticides (chemicals) and residual effects d. Integrated Pest Management	28 th						Morris Tabiano - FAO Morris.Tabiano@fao.org +211 925800300
Agricultural Cooperatives or Association a. Legal framework b. Membership c. Management d. Reporting	4 th						Daniel Musa - IRC Daniel.Musa@resouce.org +211 920540003
Seed System Security Assessment a. Seed System, Seed & Food Security concepts b. Tools for assessing seed system security c. Data collection, management and analysis	25 th						Joseph Okidi - FAO Joseph.Okidi@fao.org +211 921751621
Extension Approaches & Services a. Extension skills and establishment of demonstrations b. Farmer Field School (FFS) c. Conducting field days and agriculture shows d. Use of Mass Media, Print and electronic	9 th						Tayo Alabi - EU T.ALABI@eesagroup.eu +211 925 568 086
Tree Planting and Agro-Forestry a. Tree Nursery establishment and management b. Orchard c. Woodlot d. Agroforestry	30 th						Wani James - FAO James.Wani@fao.org +211 925100365
Soil and Water Management a. Dyes for control of food b. Irrigation c. Soil fertility management d. Conservation Agriculture (CA)	7 th						Aliga Moses - OPEN alikaliga@gmail.com +211 927718893
Reporting and Documentation a. Livelihood info distribution - DOP and reporting b. PMS, photography and videography c. Case studies	28 th						Daniel Kimani - FAO Daniel.Kimani@fao.org +211922001733
Technical Specifications for Agricultural Inputs a. Seed procurement b. Tool and equipment c. Agriculture chemicals (pesticides, herbicides etc.) d. Bio-pesticides	4 th						Joseph Okidi - FAO Joseph.Okidi@fao.org +211 921751621
Agriculture Infrastructure Tools & Machinery a. Animal traction b. Power tillers c. Local tool production d. Mechanized tillage services	25 th						Joseph Okidi - FAO Joseph.Okidi@fao.org +211 921751621

Global Cluster Coordination Group Support Mission in SS – 2nd to 10th June 2022

- **JOINT GCCG – SS ICCG Meeting (24th May)** - Brief explanation of the GCCG & Focus areas of the mission as per ToRs
- **Focus Areas of the mission**
 - CCs & Co-CCs, CLAs & Co-Lead Agencies, Cluster Partners, ICCG, Subnational Coordination, Localization & AAP)
 - to **provide enabling support** to the implementation of the **P2P mission's** recommendations on **Coordination and Localization**
 - **visit Malakal and Bor** to observe the **challenges and opportunities** at the subnational level
 - **final briefing** with the HC/HCT - the team will produce a **brief narrative report** (to be shared with the ICCG by 30 June 2022)
- **Group meeting with the Clusters (CCS, Education, FSL, Logistics, Shelter/NFI, WASH)**
 - Mentimeter questions – on coordination, role of CLAs & Co-Lead Agencies, relationship with cluster members, functioning of ICCG etc.
- **Bilateral exchange between GCC participants and Cluster Coordinators & Co-Coordiators**
 - Mentimeter questions – on coordination, role of CLAs & Co-Lead Agencies, relationship with cluster members, functioning of ICCG etc.
- **Cluster Members Feedback**
 - [Minimum Commitments for Cluster Participation](#) included in the IASC Reference Module for Cluster Coordination
 - The cluster is only **as good as the participation of its members**. Without the constant commitment of cluster participants, **predictable coordination** will not be achieved.
 - How do you view **cluster** performance? How do you view **ICCG** performance?
 - How can **subnational coordination be improved** – what are some concrete, resource-neutral **ideas**?
 - What **practical steps** can be taken to advance **localization**?

Minimum Commitments for Cluster Participation

- **Active participation** in the cluster + **commitment** to engage in the cluster's collective work
- **Capacity and willingness** to contribute to the cluster's response plan and activities and to work cooperatively
- **Commitment** to humanitarian principles, the Principles of Partnership, cluster-specific guidance and programme standards, including on PSEA
- Commitment by senior staff member to **work with cluster**
- Commitment to work with other cluster members
- **Willingness** to take on leadership responsibilities in sub-national or working groups as needed
- Commitment to **mainstream protection + cross-cutting issues**
- Readiness to **improve AAP**
- **Understanding of the duties** associated with membership of the cluster, as defined by the country **Cluster ToRs**



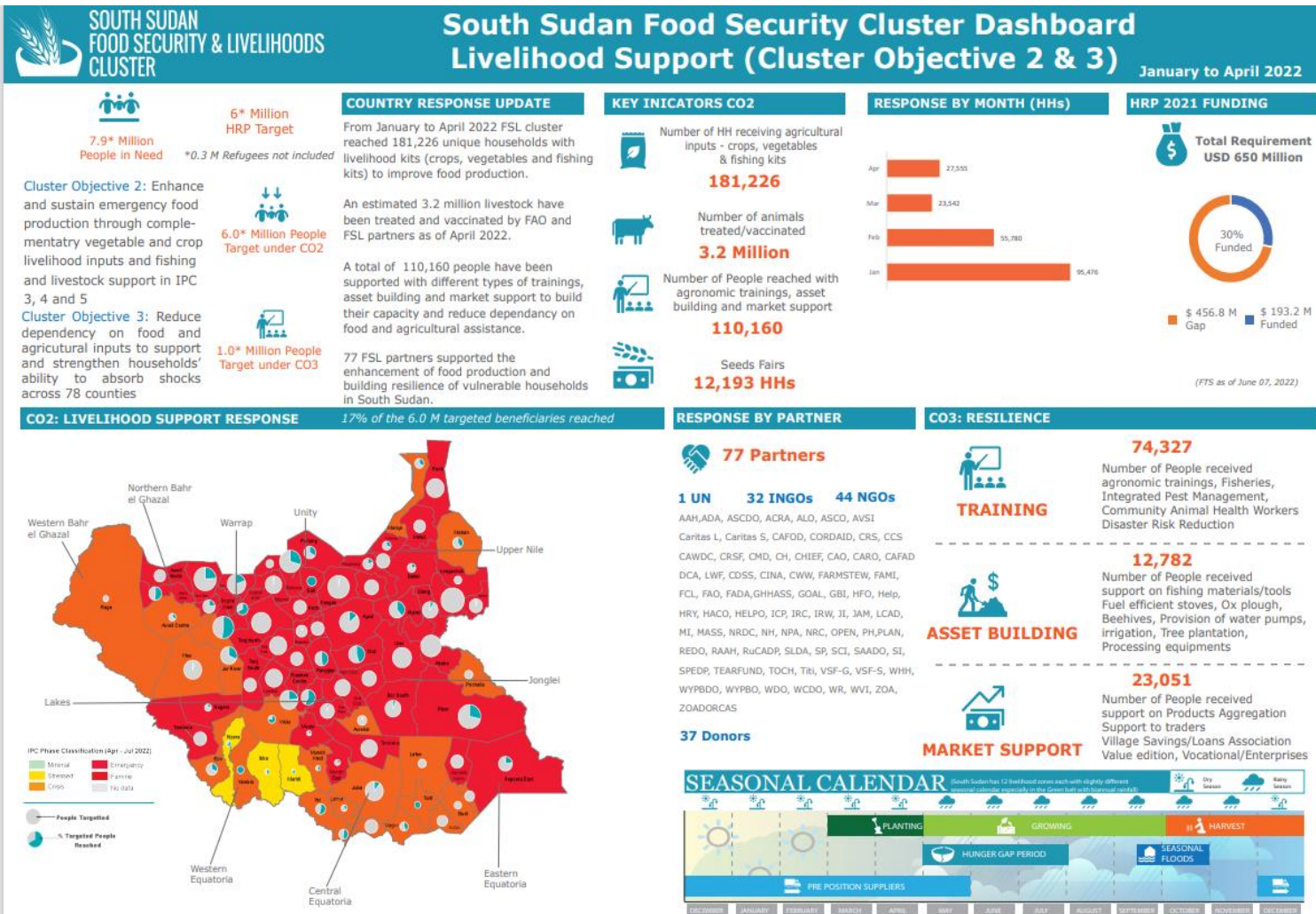
SOUTH SUDAN

Food Security & Livelihoods Cluster

Strengthening Humanitarian Response



FSLC CO2 (Livelihoods) & CO3 (Training) Dashboard Jan – Apr 2022



↓ ↓
People Targeted: 6.0 M

↓ ↓
People Reached: 1.0M (17%)

🤝
77 Partners

FAO: 54% , Other FSL Partners (I/NGO): 46%

110,160 People supported through trainings (Target: 1.0 M)



SOUTH SUDAN FOOD SECURITY AND LIVELIHOODS CLUSTER

For further information, please contact
Alistair Short, Food Security and Livelihoods Cluster, Coordinator
Email: alistair.short@wfp.org, Tel: (+211) 922465613
FSL Cluster Secretariat: info.southsudan@cluster.org

The boundaries and names shown and the designations used on this map do not imply official endorsement or acceptance by the UN.

Production Date: June 2022 | Data Source: FSLC/FSLC Partners/OCHA/FTS