

### COUNTRY RESPONSE UPDATE

In March, FSL cluster partners assisted over 1.6 million people with unconditional and transitional emergency food assistance. 77% of beneficiaries received in-kind food assistance while 23% received Cash and Vouchers.

Since January, WFP and FSL partners have reached 2.1 million unique beneficiaries with unconditional and transitional emergency food assistance. On average, 1.4 million beneficiaries are receiving support month on month from a total of 63 different partners.

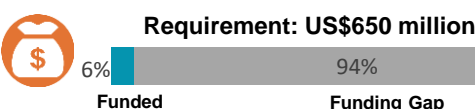
During the January 2019 IPC: For the projection period of February - April 2019, a total of 6.45 million people (57% of the population) will face Crisis (IPC Phase 3) acute food insecurity or worse with about 45,000 people spread across six counties classified in IPC phase 5. [click here to download key messages.](#)

### KEY INDICATORS (MARCH)

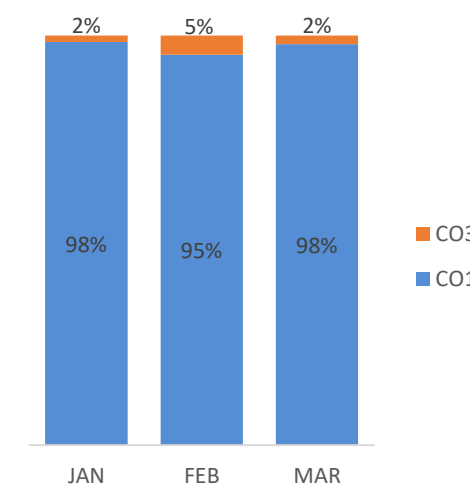
Number of Beneficiaries reached with unconditional food assistance  
**1,570,684**  
 people

Number of Beneficiaries reached with transitional emergency food assistance  
**34,340**  
 people

### HRP 2019 FUNDING STATUS



### MONTHLY RESPONSE TREND



### CLUSTER OBJECTIVES

**CO1: Unconditional Food Assistance**

2019 ANNUAL TARGET

**2.13 Million people**

**CO3: Transitional Emergency Food Assistance**

2019 ANNUAL TARGET

**1.6 Million people**

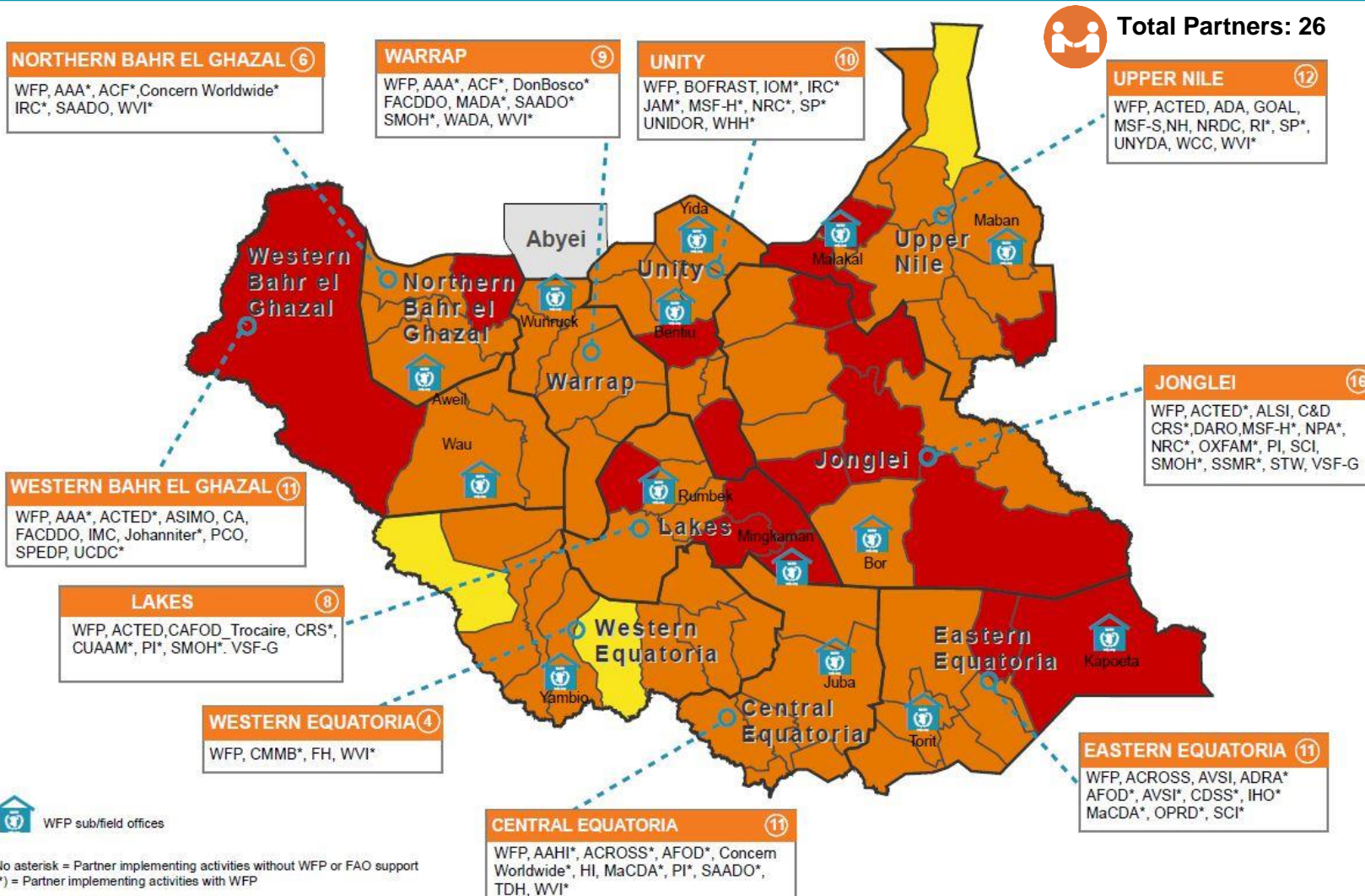
### MARCH RESPONSE

**77%**  
 In Kind  
 (Unconditional /FFA)

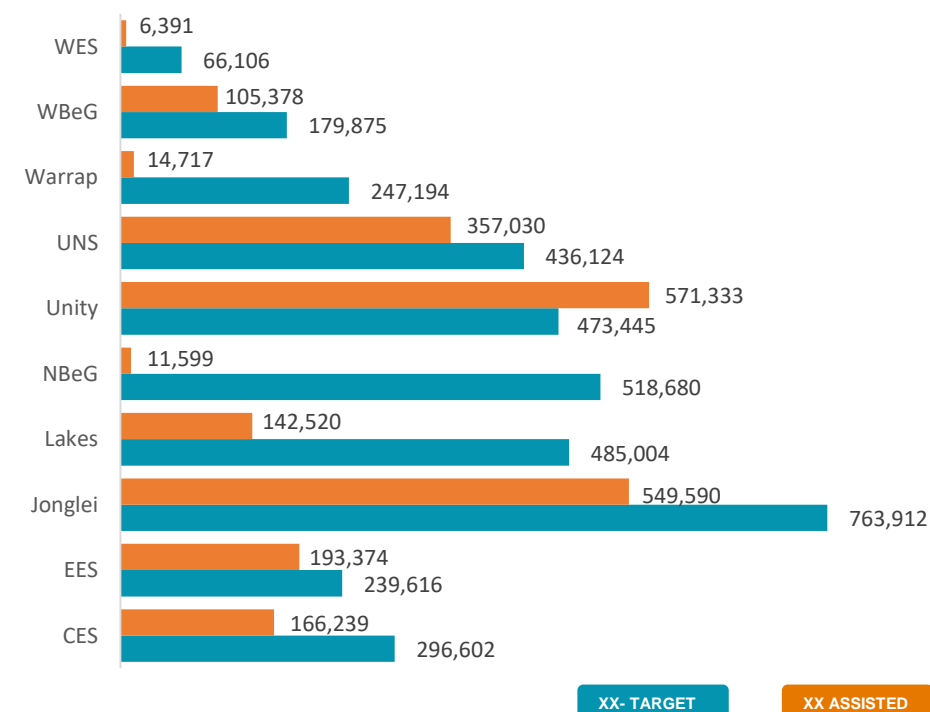
**1%**  
 Cash  
 Unconditional/Conditional

**22%**  
 Vouchers  
 Unconditional/Conditional

### PARTNERS PRESENCE MAP (CO1 & CO3)



### ANNUAL TARGET VS PARTNER RESPONSE (CO1 & CO3)



### IPC Population by State (in %) : Feb-Apr 2019

