

COUNTRY RESPONSE UPDATE

In April, FSL cluster partners assisted over 2.2 million beneficiaries with unconditional and transitional emergency food assistance. 88% of the beneficiaries received in-kind food assistance while 12% received Cash and Vouchers support.

Since January, WFP and FSL partners have reached 3.2 million unique beneficiaries with unconditional and transitional emergency food assistance. On average, 1.6 million beneficiaries are receiving support month on month from a total of 70 different partners.

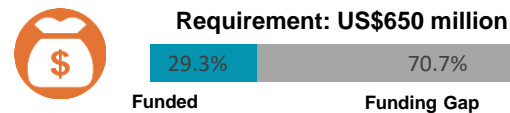
During the January 2019 IPC: For the projection period of February - April 2019, a total of 6.45 million people (57% of the population) will face Crisis (IPC Phase 3) acute food insecurity or worse with about 45,000 people spread across six counties classified in IPC phase 5. [click here to download key messages.](#)

KEY INDICATORS (APRIL)

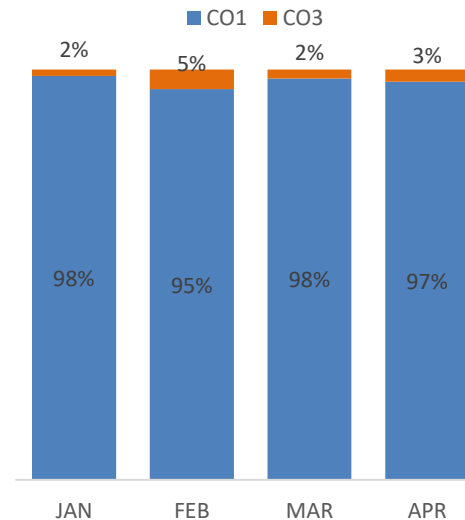
Number of Beneficiaries reached with unconditional food assistance
2,276,092
people

Number of Beneficiaries reached with transitional emergency food assistance
69,574
people

HRP 2019 FUNDING STATUS



MONTHLY RESPONSE TREND



CLUSTER OBJECTIVES

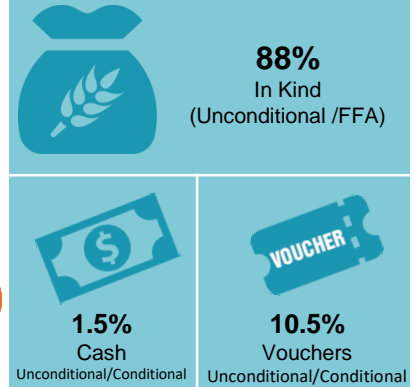
CO1: Unconditional Food Assistance

2019 ANNUAL TARGET **2.13 Million people**

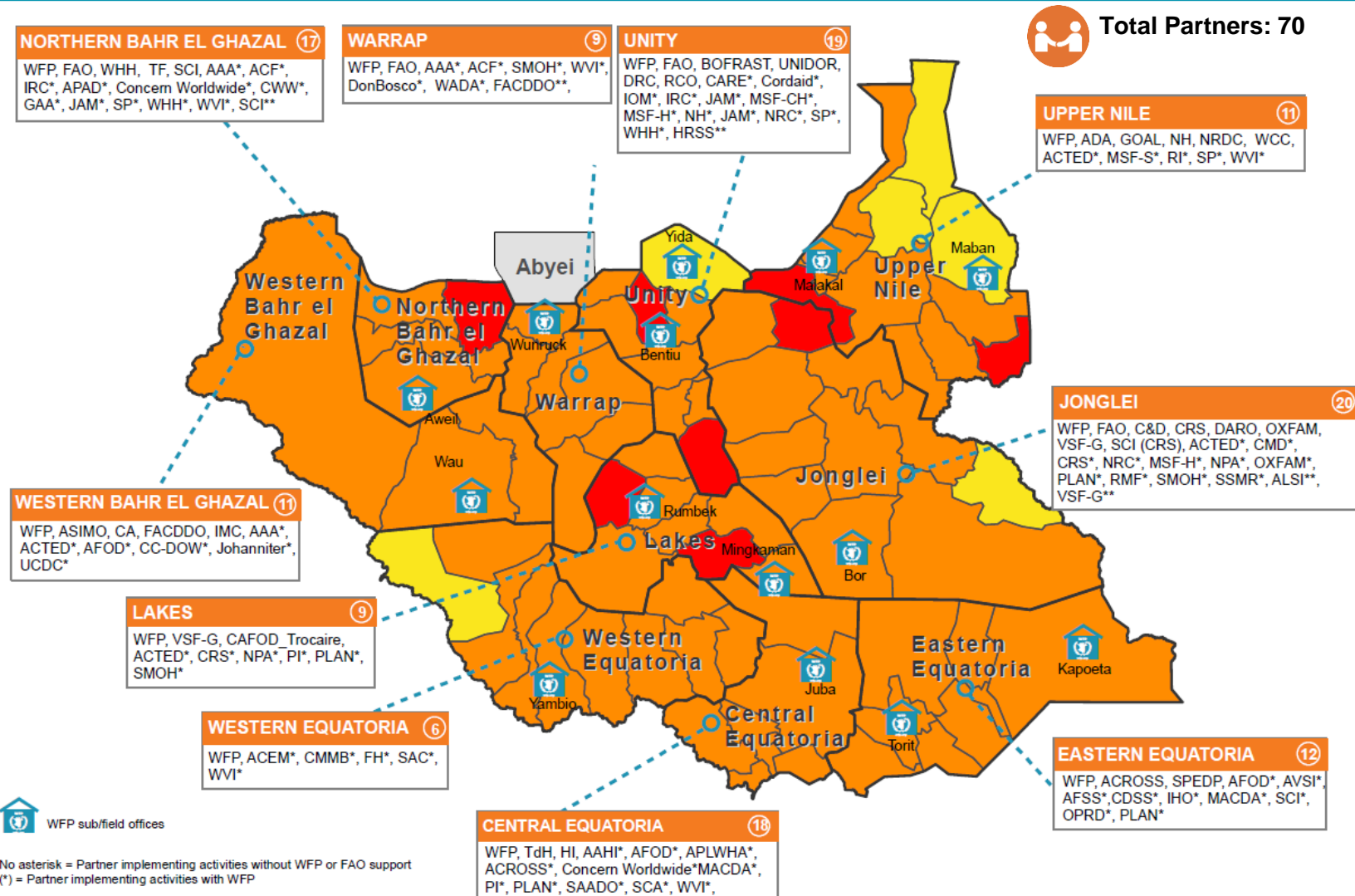
CO3: Transitional Emergency Food Assistance

2019 ANNUAL TARGET **1.6 Million people**

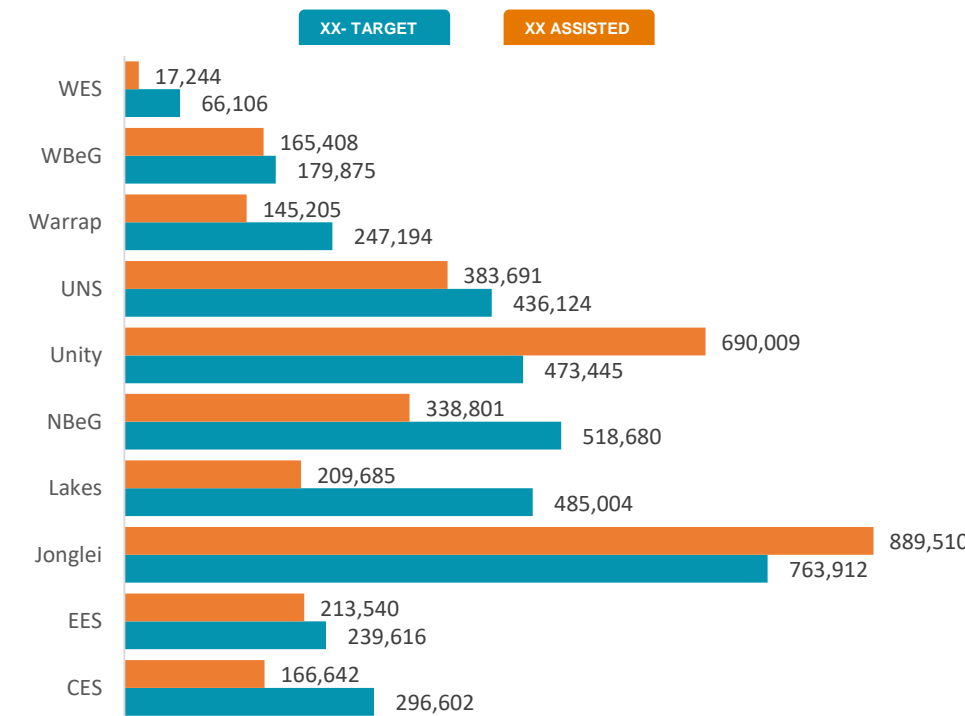
APRIL RESPONSE



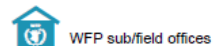
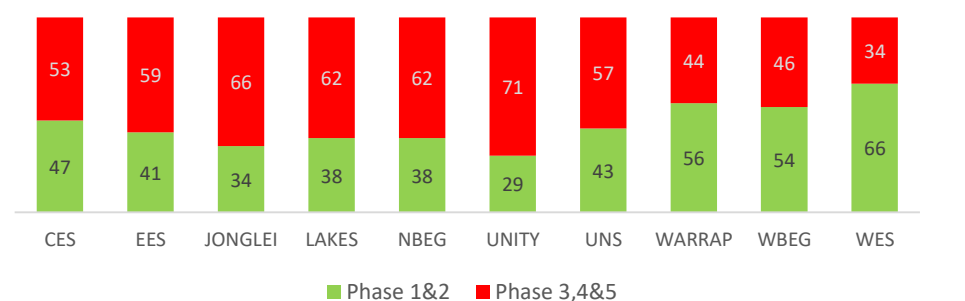
PARTNERS PRESENCE MAP (CO1 & CO3)



ANNUAL TARGET VS PARTNER RESPONSE (CO1 & CO3)



IPC Population by State (in %) : Feb-Apr 2019



No asterisk = Partner implementing activities without WFP or FAO support
(*) = Partner implementing activities with WFP