

FSL CLUSTER MEETING

INTRODUCTION TO LOGISTICS CLUSTER COMMON SERVICES



15 September 2021

Agenda



- Overview of common logistics services
- Common Storage
- Road Transport
- Air Transport
- River Transport
- Service Request Form
- Question time

COMMON LOGISTICS SERVICES



Common Storage



Road Transport

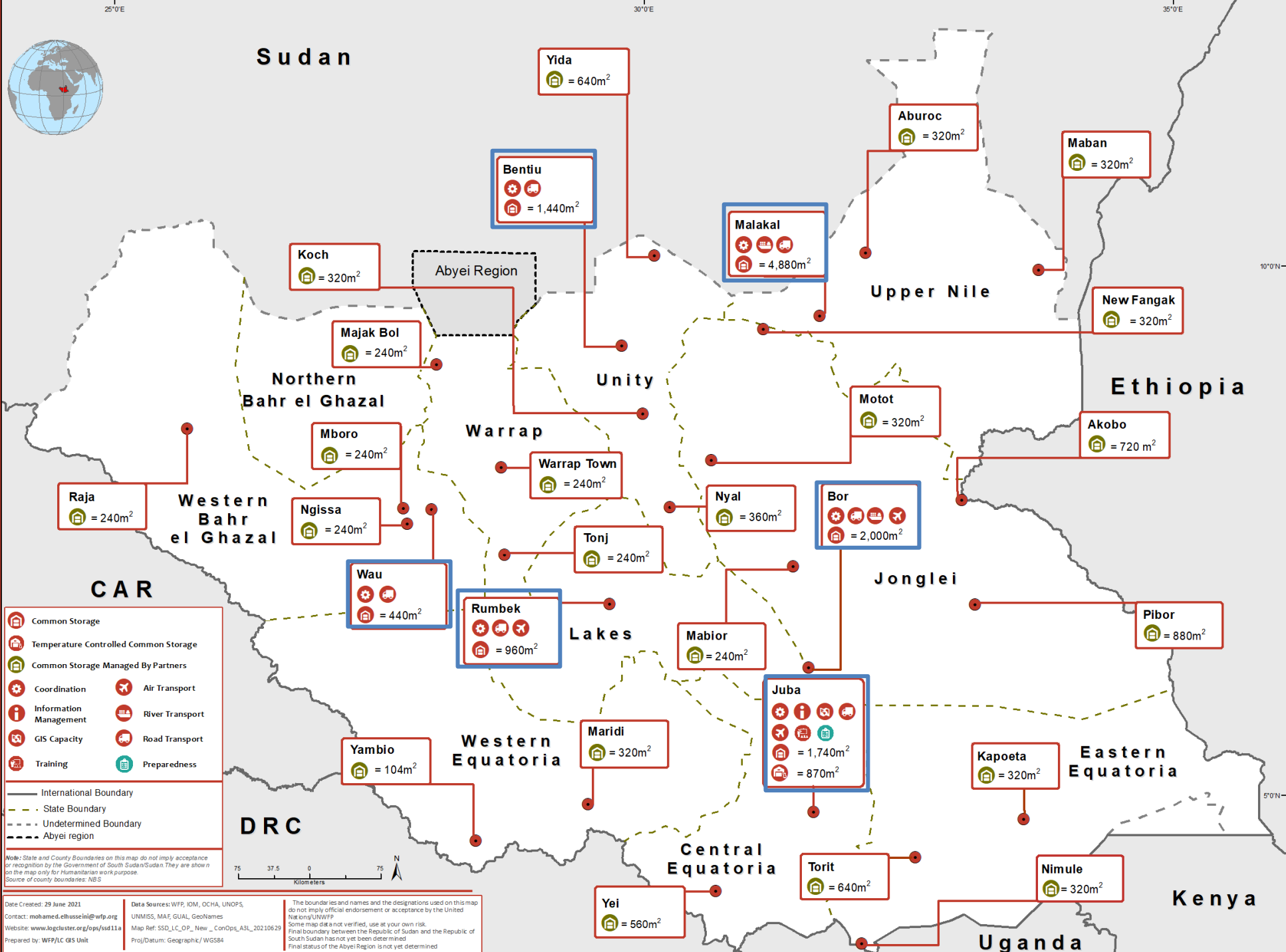


Air Transport



River Transport

**Services provided to fill recognised gaps in logistics in South Sudan.
Logistics Cluster services in South Sudan are offered on a free-to-user basis.**



	Common Storage
	Temperature Controlled Common Storage
	Common Storage Managed By Partners
	Coordination
	Air Transport
	Information Management
	River Transport
	GIS Capacity
	Road Transport
	Training
	Preparedness

— International Boundary
 - - - State Boundary
 - - - Undetermined Boundary
 - - - Abyei region

Note: State and County boundaries on this map do not imply acceptance or recognition by the Government of South Sudan/Sudan. They are shown on the map only for humanitarian work purpose.
Source of county boundaries: NBS

Date Created: 29 June 2021
Contact: mohamed.elhusseini@wfp.org
Website: www.logcluster.org/ops/ssd11a
Prepared by: WFP/LC GIS Unit

Data Sources: WFP, IOM, OCHA, UNOPS, UNMISS, MAJ, GUAL, GeoNames
Map Ref: SSD_LC_OP_New_ConOps_A31_20210629
Proj/Datum: Geographic/ WGS84

The boundaries and names and the designations used on this map do not imply official endorsement or acceptance by the United Nations/UNWFP
Some map data not verified, use at your own risk.
Final boundary between the Republic of Sudan and the Republic of South Sudan has not yet been determined
Final status of the Abyei Region is not yet determined



Common Storage



- The Logistics Cluster provides storage space in Juba, the field hubs (Bentiu, Bor, Malakal, Rumbek, Wau) and 22 field locations.
- The Logistics Cluster loans MSUs for the strategic prepositioning of relief items based on the needs of requesting organisations.
- Priority is given to organisations willing to manage MSUs as common storage facilities versus individual use and to Inter-Cluster Coordination Group (ICCG) priority locations.

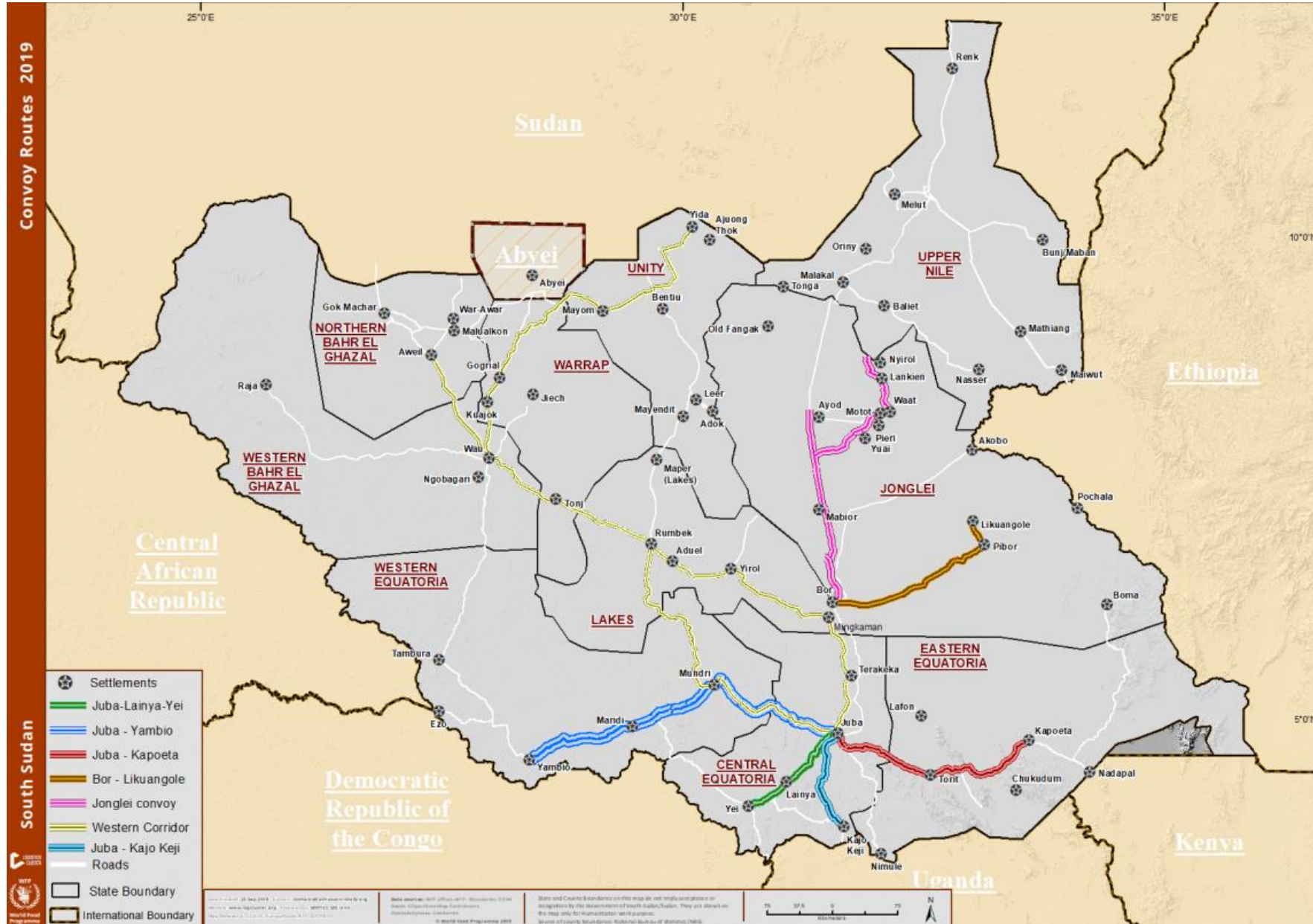
Road Transport



- Convoy coordination
- Beyond Responses – Bentiu and Wau
- Common Transport Service (CTS)



Convoy Routes



Convoy coordination



Organisation Responsibilities:

- Submit clearances, convoy request sheet & information on road accessibility
- Inform drivers about the Presidential Decree
- Hire trucks/drivers & load trucks
- Respect all convoy guidelines
- Visibility on trucks/vehicles

Logistics Cluster Responsibilities:

- Design a schedule and send notifications
- WFP Access/Security Units
- Joint Verification & Monitoring Mechanism (JBVMM)
Clearances for all routes
- Provide updated information

Convoys are for Cargo Only



Road Convoys - To remember



- **When do convoys depart?**
 - Schedule shared on the Logistics Cluster website
 - Convoys announced via mailing list
- **How to sign up?**
 - Submit Convoy Details Sheet
 - Submit Copy of clearances from the Relief and Rehabilitation Commission (RRC), Criminal Investigation Department (CID) - for light vehicles, Drugs and Food Control Authority (DFCA) - in case of drugs

TRANSPORT PLANNING



South Sudan - Transport Plan as of 28 June 2021

[Download file](#)

2021-06-28



South Sudan - Road Convoy Schedule, June - July 2021

[Download file](#)

2021-05-21



South Sudan - River Movement Schedule, June - August 2021

[Download file](#)

2021-05-21



Focus of Air Operations:

- ICCG priority locations (unless reachable by road/river)
- Rapid Missions
- Locations unreachable by road/river

Current fleet:

- 2x fixed wing, dispatch from Juba
- 2x Mi8 helicopter, dispatch from Bor

→ need to serve all partners with these air assets!

Logistics Cluster South Sudan

ICCG Priority Locations (by mode of transport)



Jonglei- Duk: Poktap, Payuel, Padiet and Panyang

Jonglei-Twic: Twic East

GPAA – Pibor: Verteth, Kozchal, Manyabol;
monitoring Pibor town, Gumuruk, Labrab and
Lekuangole



Central Equatoria - Yei

Central Equatoria – Juba

Central Equatoria - Kajo Keji: Loggo

Central Equatoria - Lainnya: Lainnya, Katigiri and Wonduruba

NBeG: Aweil South

Western Equatoria – Yambio, Ezo, Tambura, Nagero, Nzara

Lakes – Yirol West

Warrap – Gogrial West

Warrap - Tonj East: Makuach, Wunlit, Payeng, Ananatak,
Palal and Paliang payam

Warrap -Tonj South: Tonj, Manyangok, Thiet and Jak Payam

Warrap - Tonj North: Rual Bet, Pagol, Manalor, Akop, Aliek,
Kirik, Awul, Ethieng-Puol, Warrap Town

Unity – Rubkona: Bentiu IDP camp/town



Jonglei – Akobo: Wechkoang (Dengjok Payam),
Markath (Bilkey Payam), Wechyeryier (Nyadit
Payam), Wechgokthiang (Alali/Gakdong Payam)

Jonglei – Ayod: Western flank Wau, Pajiek,
Mogok and Pagil

Jonglei – Fangak: New Fangak and Old Fangak

Upper Nile – Panyikang: Tonga, Nyiluak, Owachi
and Pakwa/Paqar

Upper Nile – Fashoda: Mayom



Air transport



Organisation Responsibilities:

- Accurate Service Request Forms submitted
- Pre-position in correct location
- Follow guidelines for special items & dangerous goods
- Obtain necessary clearances and share with Logistics Cluster
- Morning updates to UNHAS by 7:30 am
- Flexibility & readiness, especially in rainy season
- Offload cargo from the plane and provide transport to last mile

Logistics Cluster Responsibilities:

- 24 hour response rate to requests
- Updated information and notifications
- Weekly Transport Plan posted on website
- Joint Verification & Monitoring Mechanism (JBVMM) clearance for special commodities
- Move cargo from the common storage and load into the plane



- Weather is one of the most important factors affecting aviation safety and efficiency.
- Even more important during rainy season!
- Incorrect reporting can lead to aircrafts returning without landing & increases risk of incidents.





- Weather reports expected latest 07:30 on the flight day or earlier.
- Report any change of weather even if the flight is en route.
- Minimum 3 dry days for fixed wing landing.
- Send photos if possible.
- Weather reports to be sent to UNHAS Radio Room:
Mobile: 0920403219, 0922465692
Thuraya: +8821644428476
unhasjuba.radioroom@wfp.org and copy southsudan.clustercargo@wfp.org
Skype: unhasjuba.radioroom



- Airfield Focal Points Instruction Leaflet:
<https://logcluster.org/document/airfield-focal-points-instruction-leaflet>
- Airfield Focal Points Duty Guidelines:
<https://logcluster.org/document/airfield-focal-points-duty-guidelines>
- UNHAS Operational Notice for Airfield Focal Points:
<https://logcluster.org/document/unhas-operational-notice-airfield-focal-points>
- UNHAS Operational Notice on Weather Observation and Reporting:
<https://logcluster.org/document/unhas-operational-notice-weather-observation-and-reporting>

UNHAS is regularly conducting Airfield Focal Point trainings. Please contact the Logistics Cluster at southsudan.clustercargo@wfp.org for more information.



- Bor – Renk v.v.
- Bor – Adok – Kilo 29 – Manga Port
- Bor – Ganyiel (via Taiyar port);
- Bor – Nyal

- Malakal – Akobo (Sobat river)
- Malakal – Old Fangak (White Nile and Zeraf)
- Malakal - Renk



Organisation Responsibilities	Logistics Cluster Responsibilities
1. Submit accurate Service Request Forms (SRFs);	1. Announce schedules and register SRFs;
2. Pre-position cargo in Bor/Malakal;	2. Provide estimates timeline for cargo delivery upon receipt of SRF;
3. Plan ahead – river operations takes longer lead time compared to air and road;	3. Update organisations on schedules, dispatches, progress and vessel arrivals;
4. Pre-position cargo for a minimum 2 months intervention;	4. Loading/Offloading in Bor & Malakal;
5. Organise and pay for offloading at destination (with exception of Malakal);	5. Cargo transshipment in Malakal for items destined to locations along the Sobat river;
6. Load cargo in locations where Logistics Cluster does not have presence;	6. Contract barge/boats;
7. Provide RRC Clearance;	7. Issue signed and stamped waybills indicating dispatch details;
8. Fill in the receipt details on the waybill at destination, sign and stamp. Give white copy to operator.	8. Provide JBVMM clearance



What is an SRF?



The SRF is the most important document for Logistics Cluster operations. It states the needs partners have and is the base for all the cluster activities.

Operation - Planning



Field Operations -
Movement

Transportation Tasking
(UNHAS, CTS)

Category	Inventory Units		Description	Handling Units		Weight/Size		Value (US Dollars)	CONDITIONS OF SERVICES All requests made with this SRF are subject to the following terms and conditions: (i) The service provider acts as an agent for the service user. (ii) The service provider assumes no responsibility for the transportation and storage under for any loss of or damage to the Goods carried. (iii) Service users are responsible for making adequate arrangements for the insurance of their Goods. (iv) This SRF is not a document of transport; it is issued for administrative convenience and is not intended to replace, substitute or supersede the transport document that may be issued in connection with any movement under the SRF. (v) All duties and taxes assessed on the cargo listed on this SRF are the responsibility of the Sending Organization.
	Quantity	Unit Type		Quantity	Unit Type	Total Kg	Total m3		
1									
2									
3									
4									
5									
6									
7									
8									
9									
10									
11									
12									
13									
14									
15									
TOTAL (Weight/Size/Value) for the Consignment									
COMMENT(S): Use the box below to specify special requirements for handling or transportation of your cargo/items or any other relevant logistics information.									
Date (DD-MMM-YYYY)									

LOGISTICS CLUSTER	INSTRUCTIONS FOR USE: Please fill in this form as completely as possible, save as an Excel file, and return it to the email indicated. Please add as an attachment to your email, a complete packing list of your cargo. If there is insufficient space/lines on this form to list all items in your consignment, please use additional forms. Please do not add lines to this form.		SouthSudan.clustercargo@wfp.org	
	Service Request Form Number	TRANSPORT SERVICE	SPECIAL REQUEST(S)	
Ready to Load (date):		Cold chain required: YES/NO	Temperature range from: C° to: C°	
OM (Town/City Name):	Perishable goods included: YES/NO	UN ID Number: HERE		
(Office/Facility Name):	Perishable goods included: YES/NO	You can find the UN ID Number HERE		
(Street Address):	Perishable goods included: YES/NO	* Transportation of Dangerous Goods must be done in compliance with the current edition of the United Nations Recommendations on the Transport of Dangerous Goods - Model Regulations.		
(Lat. / Long.):	Perishable goods included: YES/NO	Chemicals presenting physical hazards must be labelled according to the Global Harmonised System of Classification and Labelling of Chemicals (GHS). Dangerous goods can include a wide variety of items, if you have any doubt about the nature of your cargo, please consult with the relevant		
TO (Town/City Name):	Perishable goods included: YES/NO			
(Office/Facility Name):	Perishable goods included: YES/NO			
(Street Address):	Perishable goods included: YES/NO			
(Lat. / Long.):	Perishable goods included: YES/NO			
Location (To be stored in):	STORAGE SERVICE			
Beginning (date):				
Until (date):				

POINTS OF CONTACT

SENDING ORGANIZATION:	
Contact Name:	
Telephone No:	
Email:	
Sender's reference No:	
RECEIVING ORGANIZATION:	
Contact Name:	
Telephone No:	
Email:	
CLEARING AGENT:	
Contact Name:	
Telephone No:	
Email:	



We need a 100% accuracy – why?

- ❖ Cargo is tracked with a computer-based application;
- ❖ Even small mistakes can cause issues in the system;
- ❖ Implications on transport planning, accurate reporting, etc.

The SRF and instructions can be found on the Logistics Cluster website.



www.logcluster.org/ops/ssd11a

Resources available:

- Weekly Transport Plan
- Transport Schedules
- Service Request Form + Instructions
- Convoy Request Form
- Standard Operating Procedures
- Maps

SouthSudan.ClusterCargo@wfp.org



Questions?