



**SOMALIA**  
**FOOD SECURITY**  
**CLUSTER**

**HISHABELLE STATE LEVEL PARTNERS  
MEETING**

**17<sup>th</sup> October 2023**



# FSC PARTNERS MEETING AGENDA



1. Opening Remarks (MoHADM, MoAI, MoLFR)
2. Review of previous meeting Action Points
3. FSC September response - Hirshabelle
4. Frequency of Hirshabelle monthly coordination meetings
5. El Nino Preparedness and Response
6. Rainfall and Weather updates for Hirshabelle - SWALIM
7. AOB



## ACTION POINTS FROM PREVIOUS MEETING



1. FSC to send request to partners on stock and capacity status in preparedness of El-Nino effect – **ONGOING**
2. FSC to share Partners' Response Overview for June 2023. -**DONE**
3. FSC to share FSNAU's presentation on IPC Post Gu 2023 findings - **DONE**
4. FSC to share SWALIM's presentation on Rainfall and Weather Update - **DONE**
5. FSC to share maps of breakages analysis - **DONE**



**SOMALIA**  
**FOOD SECURITY**  
**CLUSTER**

**SEPTEMBER 2023**  
**HIRSHABELLE STATE**  
**RESPONSE UPDATE**



## People Targeted vs Reached (Monthly)

**571 K**  
People Targeted

**151 K**  
People Reached



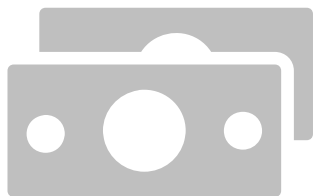
## Response by Modality (Monthly)

**51 K**  
Cash

**72 K**  
Voucher

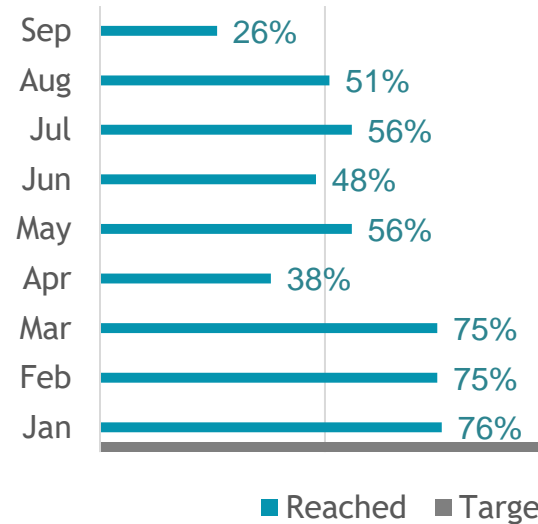
**28 K**  
In-kind

## Cash & Vouchers Transferred (Monthly)

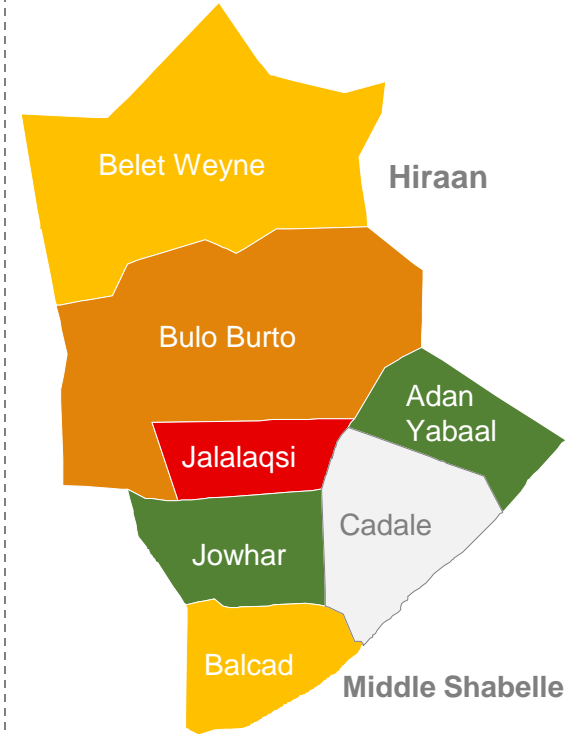


**1.4 M \$**

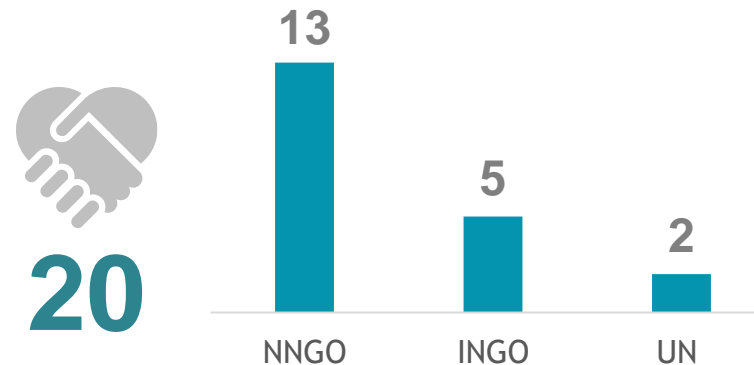
## People Targeted vs Reached (Per Month)



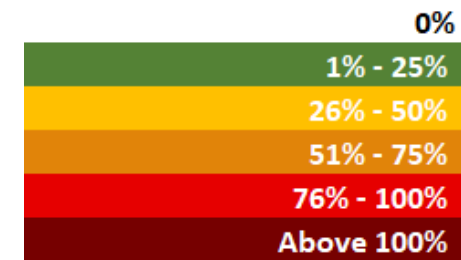
## Coverage Map



## Total Partners (Monthly)



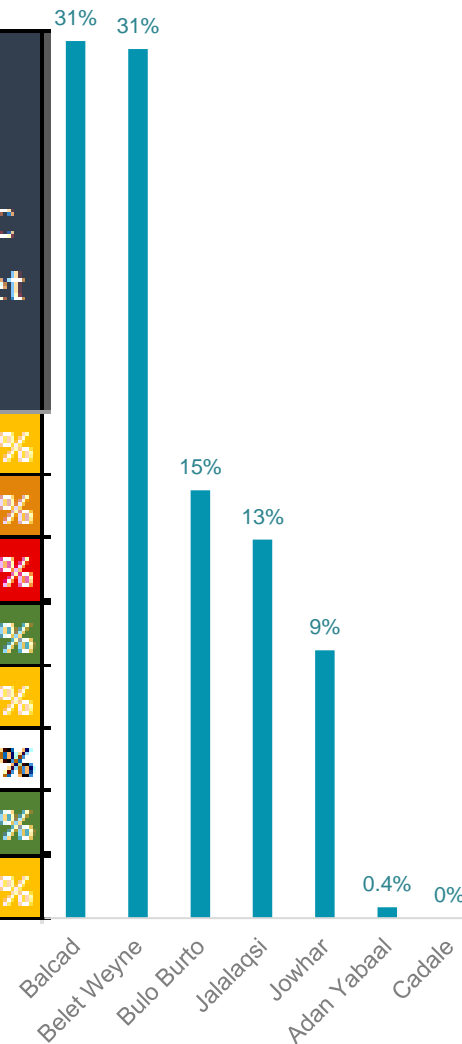
### % of response coverage



# FS Response District Level (SO1) | Sep 2023



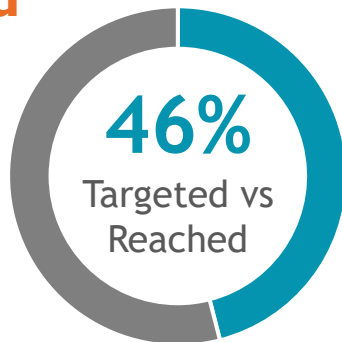
Region	District	FSC 2023 HRP Target (SO1)	(SO1) Improve availability and access to food actual achievement (Monthly)	% of response coverage vs FSC 2023 HRP Target
Hiraan	Belet Weyne	131,010	46,248	35%
	Bulo Burto	38,730	22,752	59%
	Jalalaqsi	22,710	20,130	89%
Middle Shabelle	Adan Yabaal	36,980	576	2%
	Balcad	171,610	46,674	27%
	Cadale	32,400	0	0%
	Jowhar	137,560	14,238	10%
<b>Total</b>		<b>571,000</b>	<b>150,618</b>	<b>26%</b>



## People Targeted vs Reached (Cumulative)

**425 K**  
People Targeted

**197 K**  
People Reached



## Response by Modality (Cumulative)

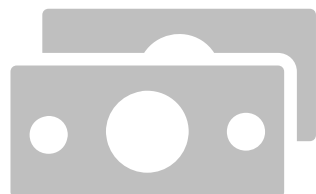
**3 K**  
Cash

**126 K**  
Voucher

**49 K**  
In-kind

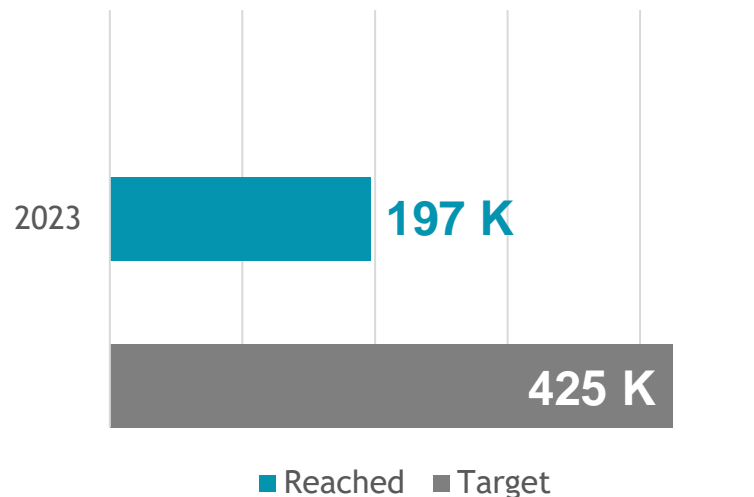
**19 K**  
Training

## Cash & Vouchers Transferred (Cumulative)

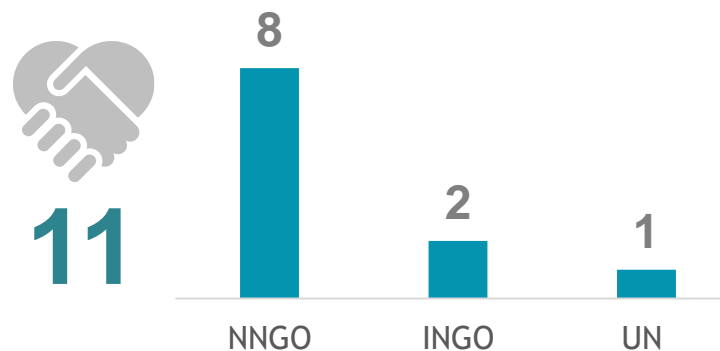


**293.6 K \$**

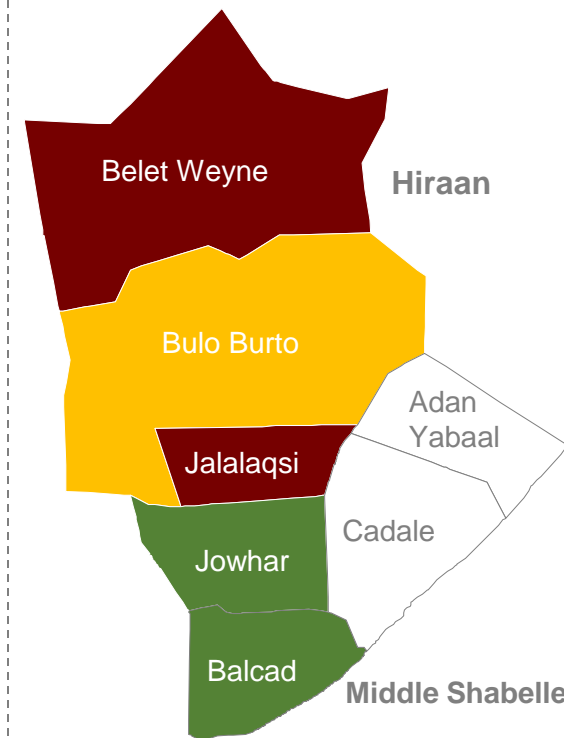
## People Targeted vs Reached (Per Month)



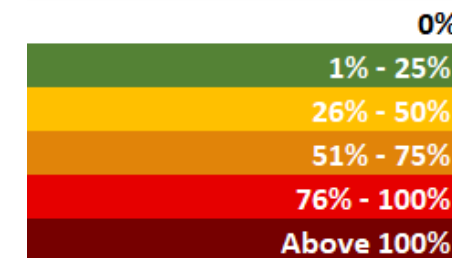
## Total Partners (Cumulative)



## Coverage Map

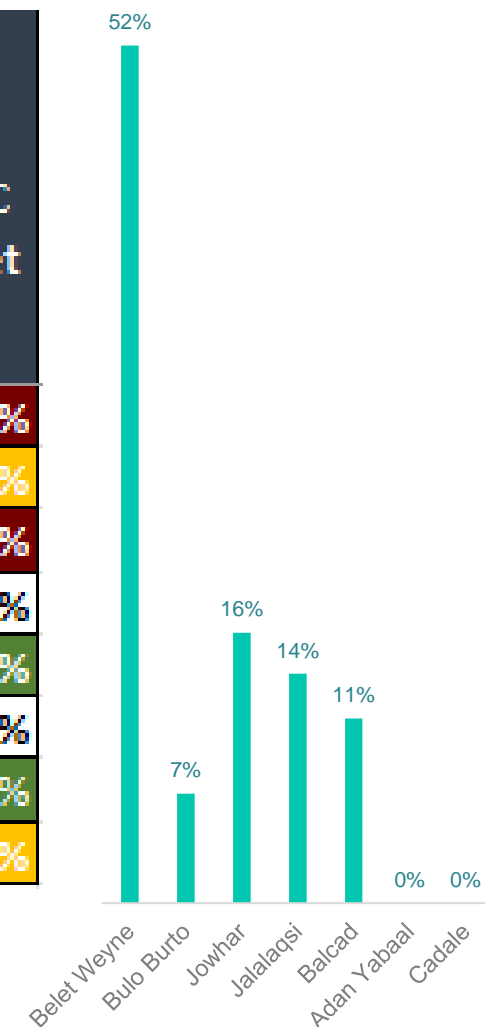


### % of response coverage



# FS Response District Level (SO2) | Sep 2023

Region	District	FSC 2023 HRP Target (SO2)	(SO2)Protect livelihoods and related food and income sources (Cumulative)	% of response coverage vs FSC 2023 HRP Target
Hiraan	Belet Weyne	85,617	102,312	119%
	Bulo Burto	35,080	13,056	37%
	Jalalaqsi	16,380	27,366	167%
Middle Shabelle	Adan Yabaal		0	0%
	Balcad	127,410	22,026	17%
	Cadale	32,400	0	0%
	Jowhar	127,668	32,268	25%
<b>Total</b>		<b>424,555</b>	<b>197,028</b>	<b>46%</b>







**SOMALIA**  
**FOOD SECURITY**  
**CLUSTER**

**FREQUENCY OF HIRSHABELLE  
MONTHLY COORDINATION  
MEETINGS**





# HISHABELLE STATE MEETING FREQUENCY

- ❑ FSC Meeting to be held twice a month  
Ad hoc meeting to be held on a needs on basis

2023	SUN	MON	TUE	WED	THU	FRI	SAT
OCTOBER	1	2	3	4	5	6	7
	8	9	10	11	12	13	14
	15	16	17	18	19	20	21
	22	23	24	25	26	27	28
	29	30	31				

2023	SUN	MON	TUE	WED	THU	FRI	SAT	
NOVEMBER					1	2	3	4
	5	6	7	8	9	10	11	
	12	13	14	15	16	17	18	
	19	20	21	22	23	24	25	
	26	27	28	29	30			

2023	SUN	MON	TUE	WED	THU	FRI	SAT
DECEMBER						1	2
	3	4	5	6	7	8	9
	10	11	12	13	14	15	16
	17	18	19	20	21	22	23
	24	25	26	27	28	29	30
31							



**SOMALIA**  
**FOOD SECURITY**  
**CLUSTER**

# **EL NINO PREPAREDNESS AND RESPONSE**



# WFP EL NINO PREPAREDNESS AND RESPONSE UPDATES



## PARTNER FLOOD MITIGATIONS MEASURES



- Information dissemination. Regular update to the communities in flood prone areas with accurate and timely information about flood occurring, risks, weather forecasts to promote community risk mitigation.
- Prepositioning of 200,000 sandbags at the MoAI in Beletweyne by FAO.
- Strengthening of weak riverbanks to prevent river breakage
- Production and dissemination of floods bulletins and alerts (SMS, Radion messages) on need basis.
- Provide general safety precaution to prevent the loss of lives and properties during the flooding.
- Community is strongly advised to keep away their children and livestock during the flooding.
- Some partners like PDA distributed 3,000 empty sacks for river banking and handed over to the Middle Shebelle ELNINO Task force committee led by the ministries Ministry of humanitarian and disaster management and the ministry of Agriculture and irrigation of Hirshabelle.
- Prepositioning boats that will be also used for delivering emergency humanitarian aid to effected population.
- Developed community-specific evacuation plans that consider the unique challenges of the area.
- Provided community hotline numbers to first track first Aid.
- Conducted a thorough risk assessment to identify areas prone to flooding. This will help prioritize resources for most vulnerable areas.



## PARTNER FLOOD RESPONSE PLANS



Organization	District	People to be assisted	Modality
WFP/COOPI/Mercy USA	Belet Weyne	31,860	Cash Based Assistance
WFP/DAN	Bulo Burto	18,828	Cash Based Assistance
WFP/STS	Jalalaqsi	20,718	Cash Based Assistance
WFP/PDA/PAH	Jowhar	14,838	Cash Based Assistance
WFP/PDA	Balcad	14,556	Cash Based Assistance
PDA	Jowhar	6,000	Cash Based Assistance
Mercy USA	Beledweyne	24,132	Voucher Assistance
COOPI-Cooperazione Internazionale	Beledweyne	9,132	Cash Based Assistance
Islamic Relief	Beledweyne	2,460	UCT
Save The Children	Beledweyne	4,860	UCT
FAO	Beledweyne	21,150	Cash plus
Danish Refugee Council	Beledweyne	5,352	Multi-purpose cash assistance

**Thank You**

# WFP Flood Anticipatory Action

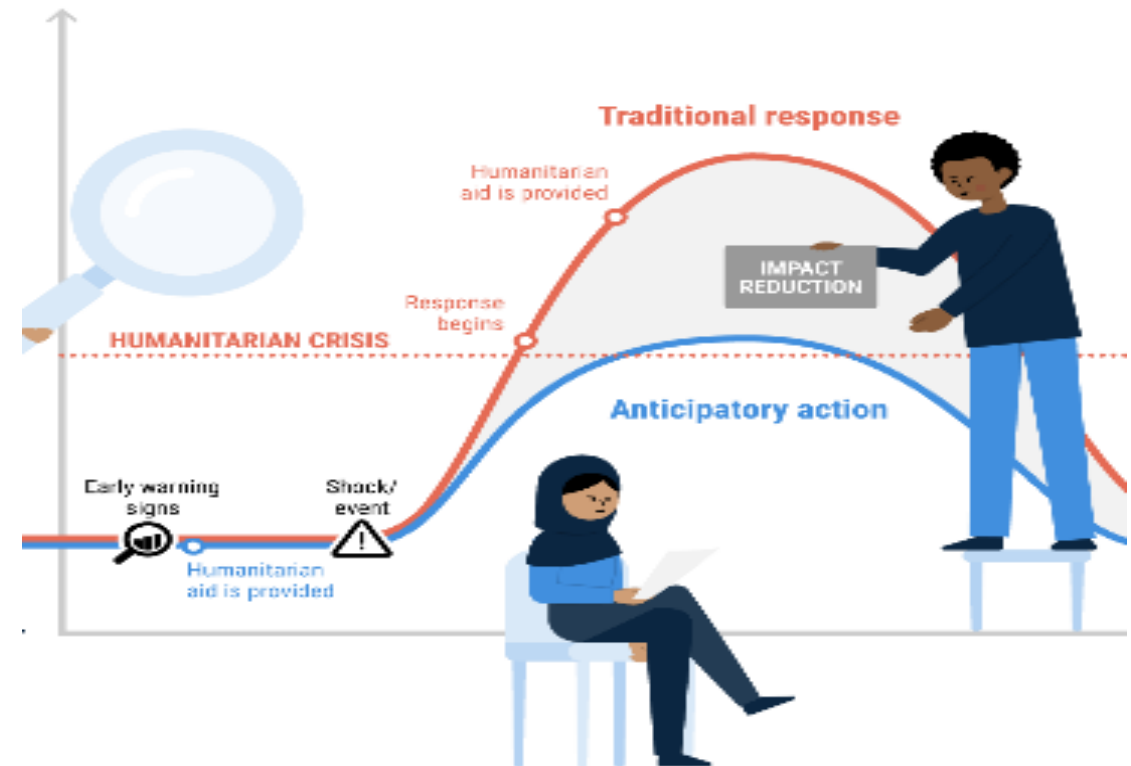




**El-Nino (Flood AA)**  
October -2023

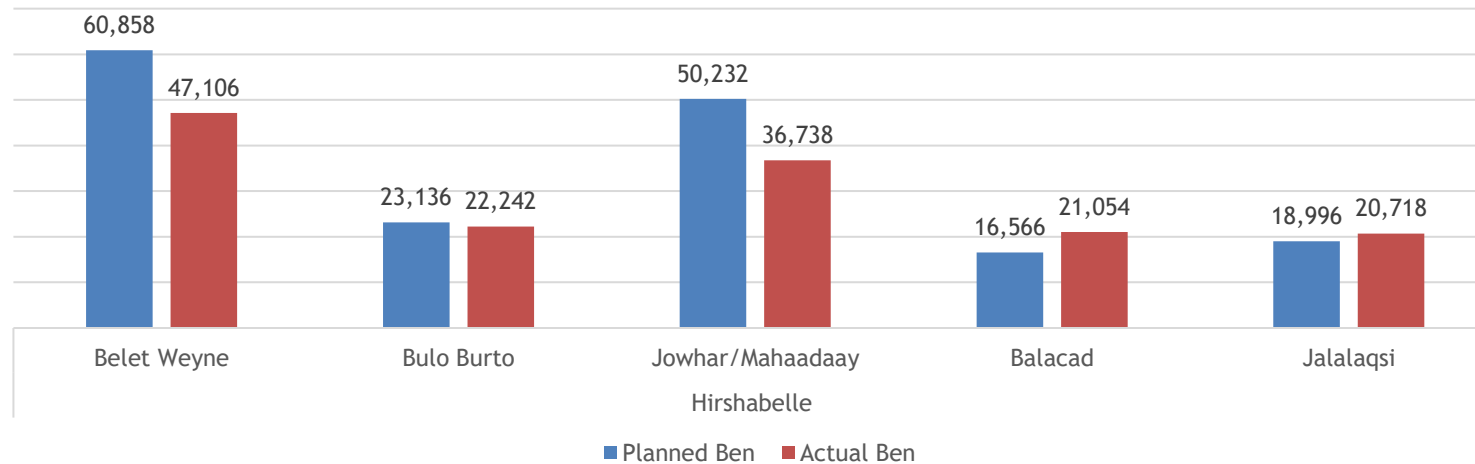
# Rationale for Anticipatory Action

1. More people could be reached earlier, faster, and more cost-efficient.
2. Saves lives and protects livelihoods by acting before flood events.
3. Improve the current capacity of the country
4. Appreciate the challenges and opportunities surrounding Anticipatory Actions.
5. Protect the development gains of vulnerable communities by avoiding losses and damage caused by floods.
6. Cost-effective means of delivering humanitarian action
7. Faster, cheaper, and more dignified responses
8. Empowers communities with information through early warning messages which enables them to act



State	District	Planned Ben	Actual Ben
Hirshabelle	Belet Weyne	60,858	47,106
	Bulo Burto	23,136	22,242
	Jowhar/Mahaadaay	50,232	36,738
	Balacad	16,566	21,054
	Jalalaqsi	18,996	20,718
Plan for AA		169,788	147,858

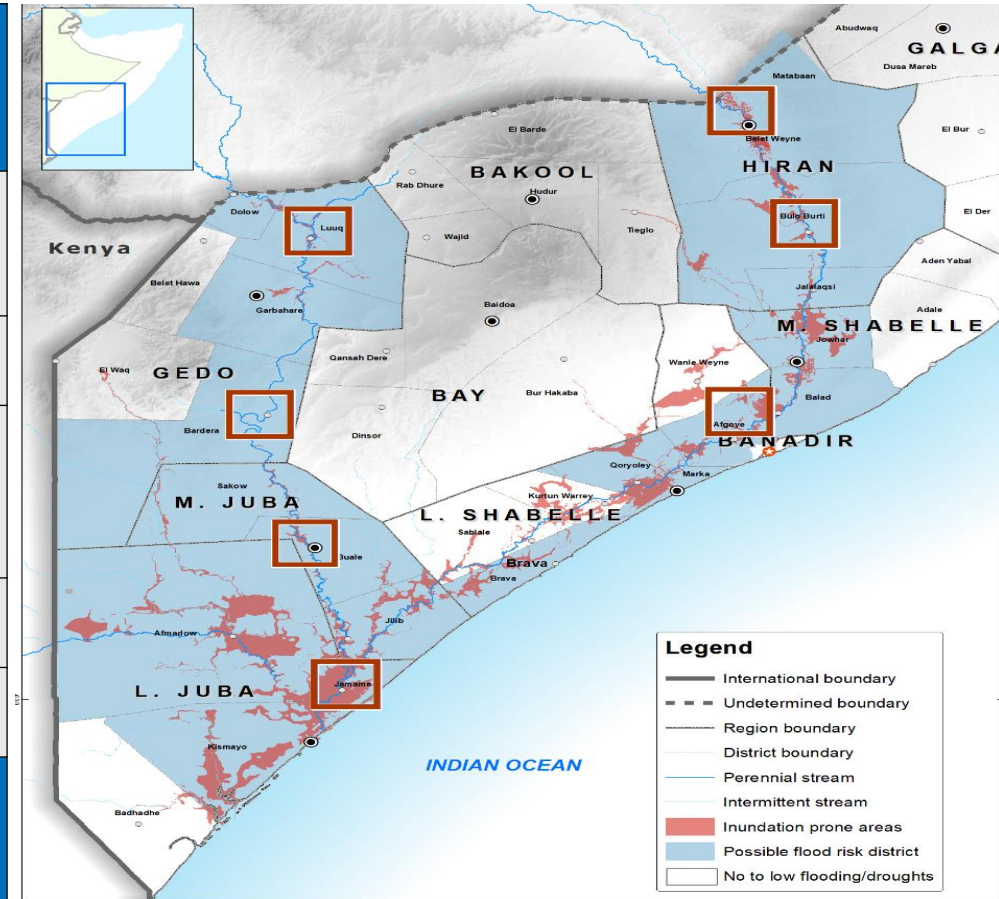
Planned vs Actual





# WFP Projected Flood AA in Hirshabelle due to El Nino- Floods

State	District	Households	Target population
Hirshabelle	Belet Weyne	10,143	60,860
	Bulo Burto	3,856	23,135
	Jowhar/Ma haadaay	8,372	50,234
	Balacad	2,761	50,234
	Jalalaqsi	3,166	18,998
<b>Plan for AA</b>		<b>28299</b>	<b>169,794</b>



---

## Challenges:

With the limited metrological services in Somalia, the development of the flood model presented some challenges. There is a need for clear and evidence-based triggers, thresholds, and timelines to implement AA intervention. Inadequate budget allocation for forecasted-based financing hindered the implementation complementary of AA.

This being the first time to implement flood anticipatory action in Somalia, the coordination mechanism has been slow.

## • Opportunities:

- The first flood Anticipatory Action framework was developed by humanitarian stakeholders under the leadership of SODMA. This will provide a platform and opportunity to develop a multi-hazard AA framework.
- First flood anticipatory action intervention has been implemented and so far, delivered early action to an estimate of xxx people in Hirshabelle
- There is a clear opportunity to improve coordination and collaboration among stakeholders.

---

## A. Target location

- Hiraan region: Belet Weyne, Bulo Bulto, Jalalaqsi
- Middle Shabelle regions: Jowhar/mahaday,

## B. Prioritized impacts to be addressed by Anticipatory Actions

- Loss of human lives, livelihoods, and shelter
- Loss of household food stocks
- Disruption of nutrition services
- Displacement of people and livestock
- Disruption/loss of market functionality

## C. Design Anticipatory Actions

- Dissemination of early warning messages and advisories
- Unconditional cash assistance
- Pre-positioning and distribution of nutrition commodities to maintain services.
- Prepositioning of boats



**SOMALIA**  
**FOOD SECURITY**  
**CLUSTER**

**RAINFALL AND WEATHER**  
**SWALIM**





Food and Agriculture Organization  
of the United Nations



# El Nino Driven Weather Outlook and Implications on Livelihoods and Programming

Hirshabelle State-Level Food Security Cluster  
Coordination Meeting  
Tuesday, 17<sup>th</sup> October 2023

---

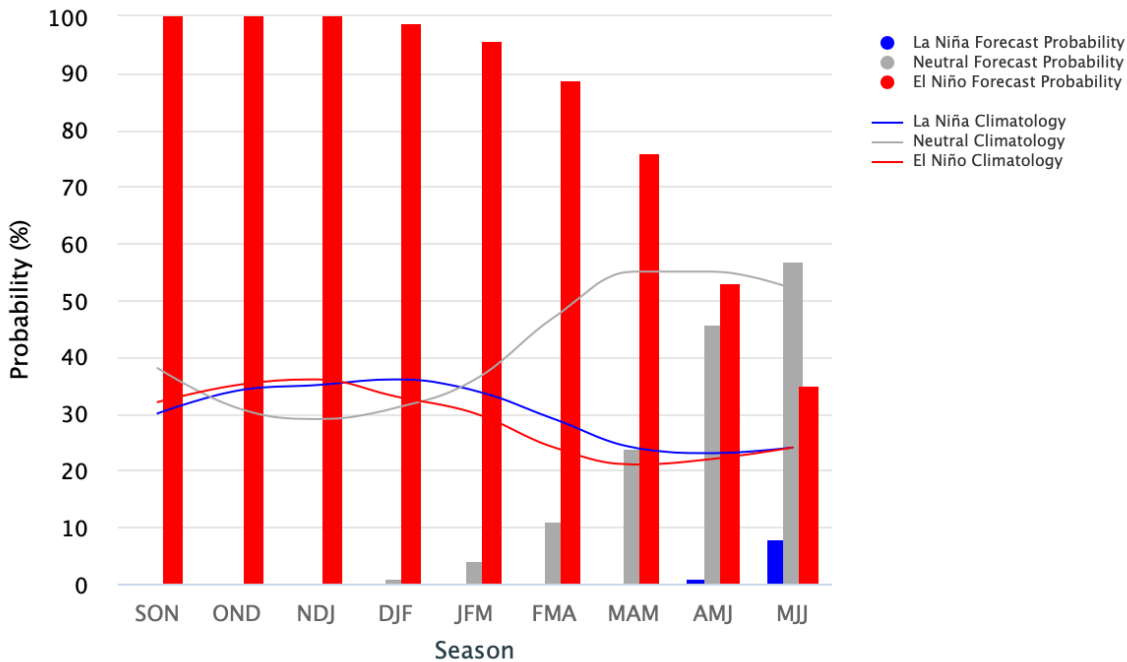
**Bethwel K. Mutai**  
Meteorologist, FAO SOMALIA- SWALIM



## Status and Evolution of ENSO (as of Mid-September)

Mid-September 2023 IRI Model-Based Probabilistic ENSO Forecasts

ENSO state based on NINO3.4 SST Anomaly Neutral ENSO:  $-0.5\text{ }^{\circ}\text{C}$  to  $0.5\text{ }^{\circ}\text{C}$



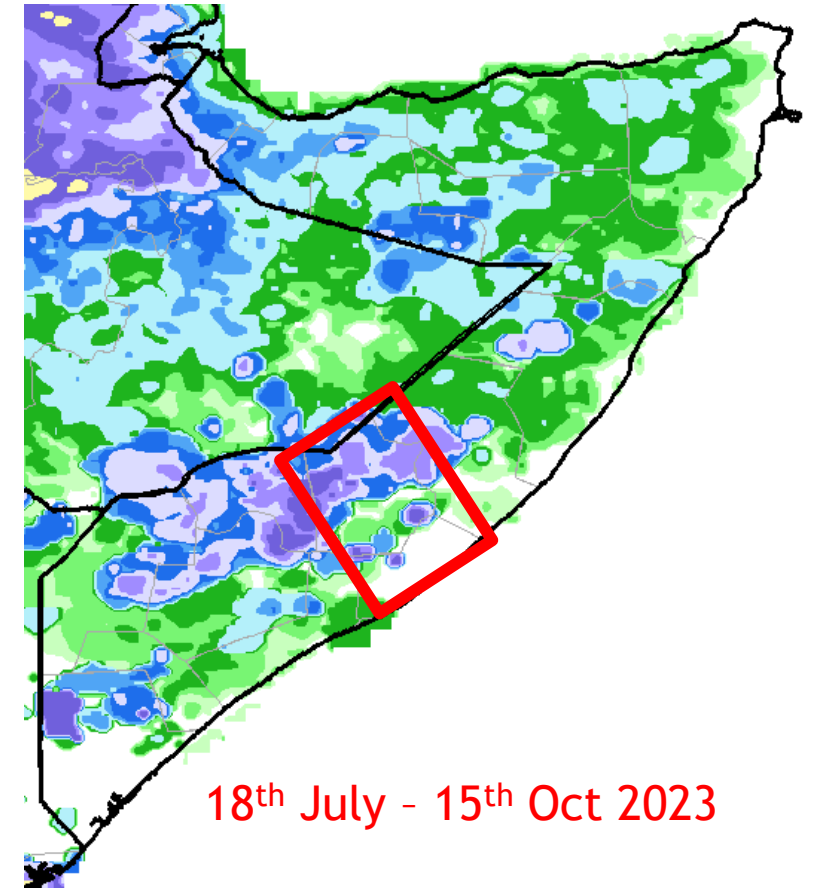
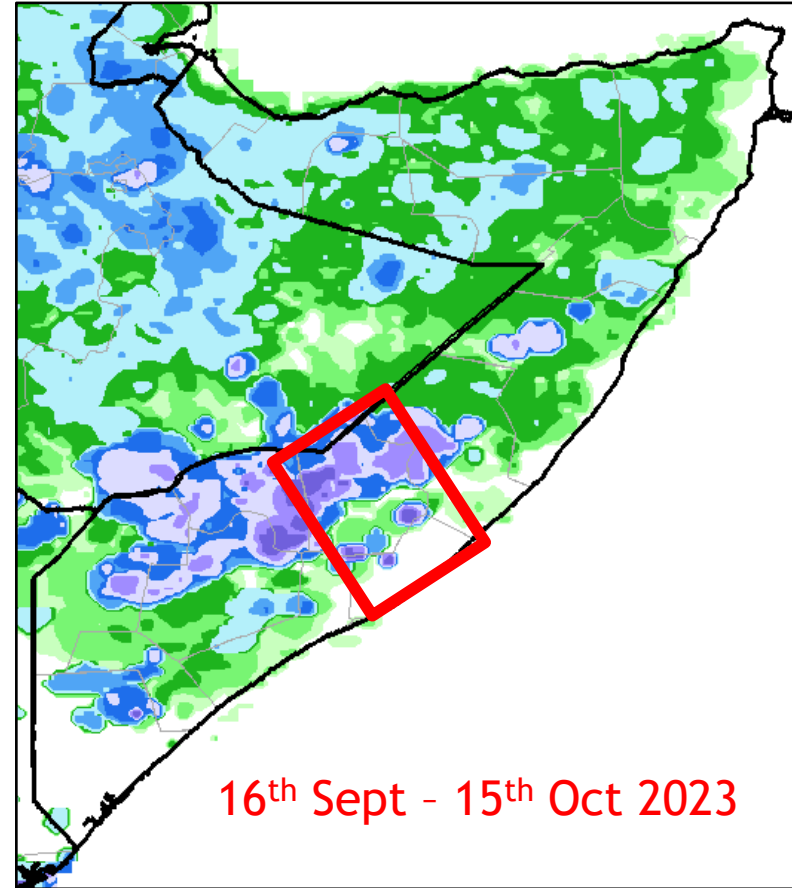
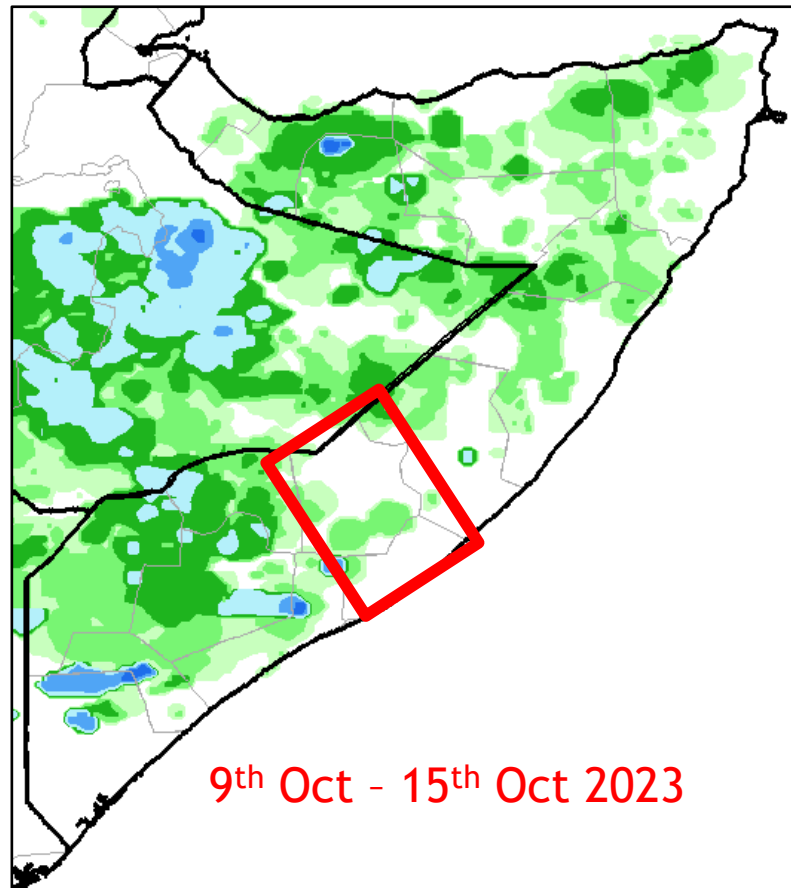
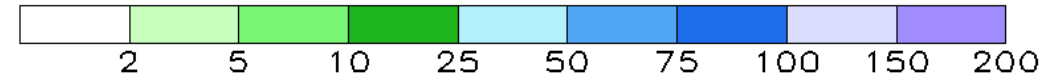
Season	La Niña	Neutral	El Niño
SON	0	0	100
OND	0	0	100
NDJ	0	0	100
DJF	0	1	99
JFM	0	4	96
FMA	0	11	89
MAM	0	24	76
AMJ	1	46	53
MJJ	8	57	35



- Probabilities (in %) for La Niña, ENSO-neutral and El Niño conditions (using  $-0.5\text{ }^{\circ}\text{C}$  and  $0.5\text{ }^{\circ}\text{C}$  thresholds) over the coming 9 seasons based on the multi-model mean prediction, and the expected skill of the models by start time and lead time

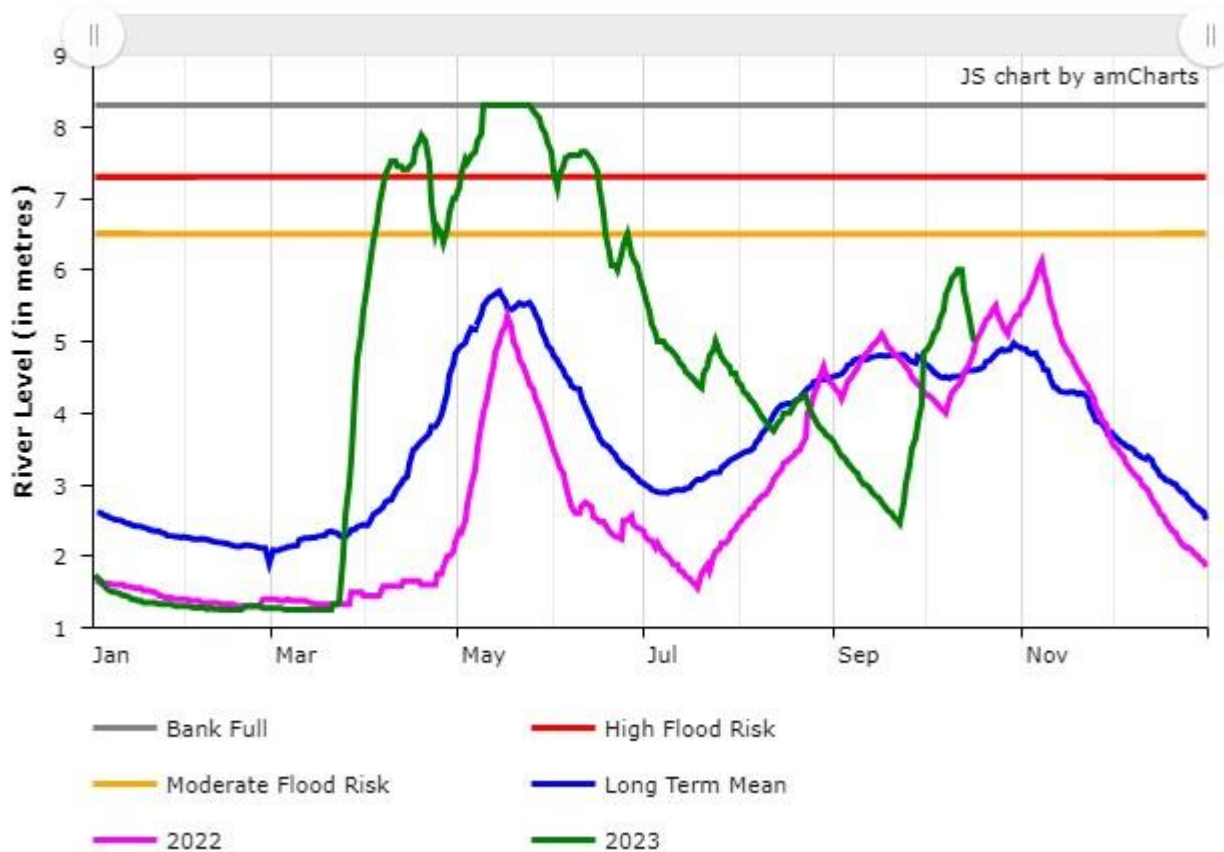
Source: NOAA/CPC

## Africa Rainfall Climatology (ARC2.0) Total Rainfall Estimates: 7-, 30-, and 90- Days

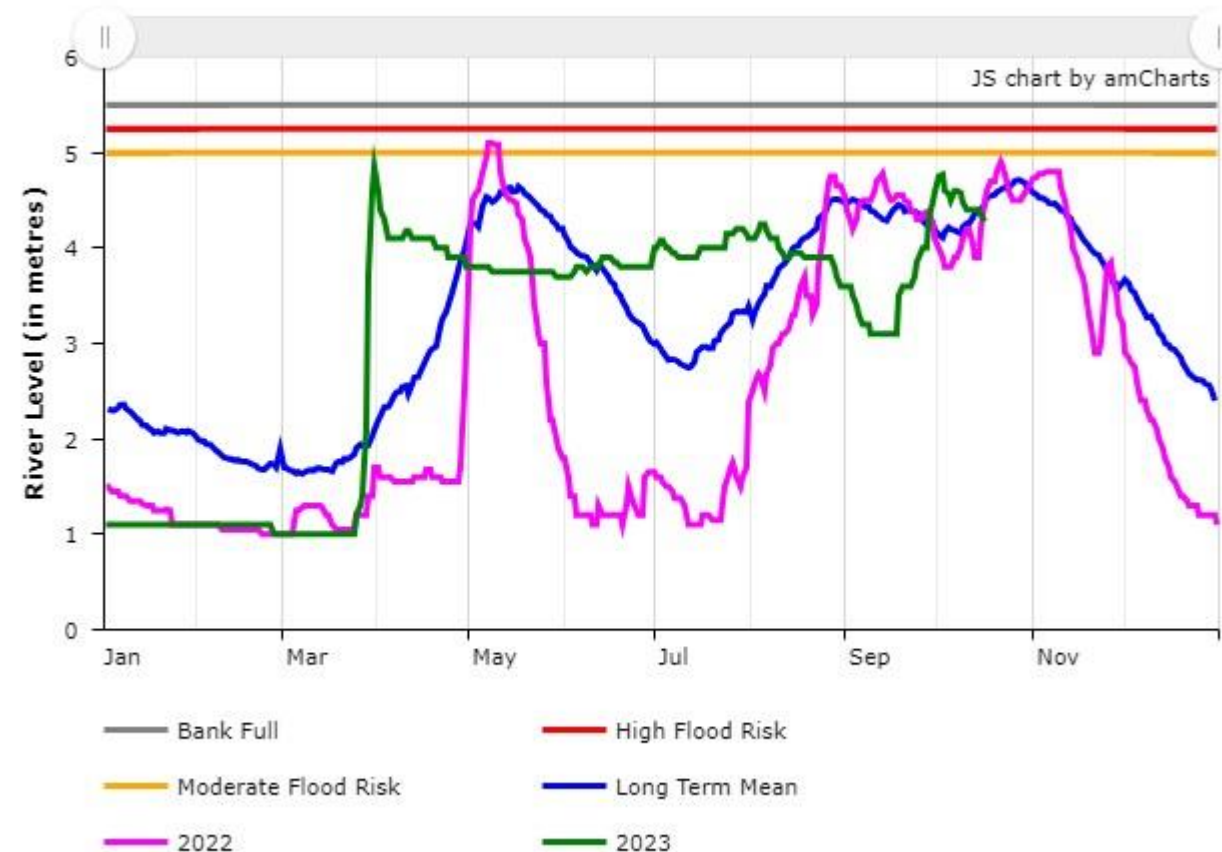


## Shabelle River Level Update: @ Belet Weyne & Jowhar Stations

Historical data for Station Belet Weyne on Shabelle River



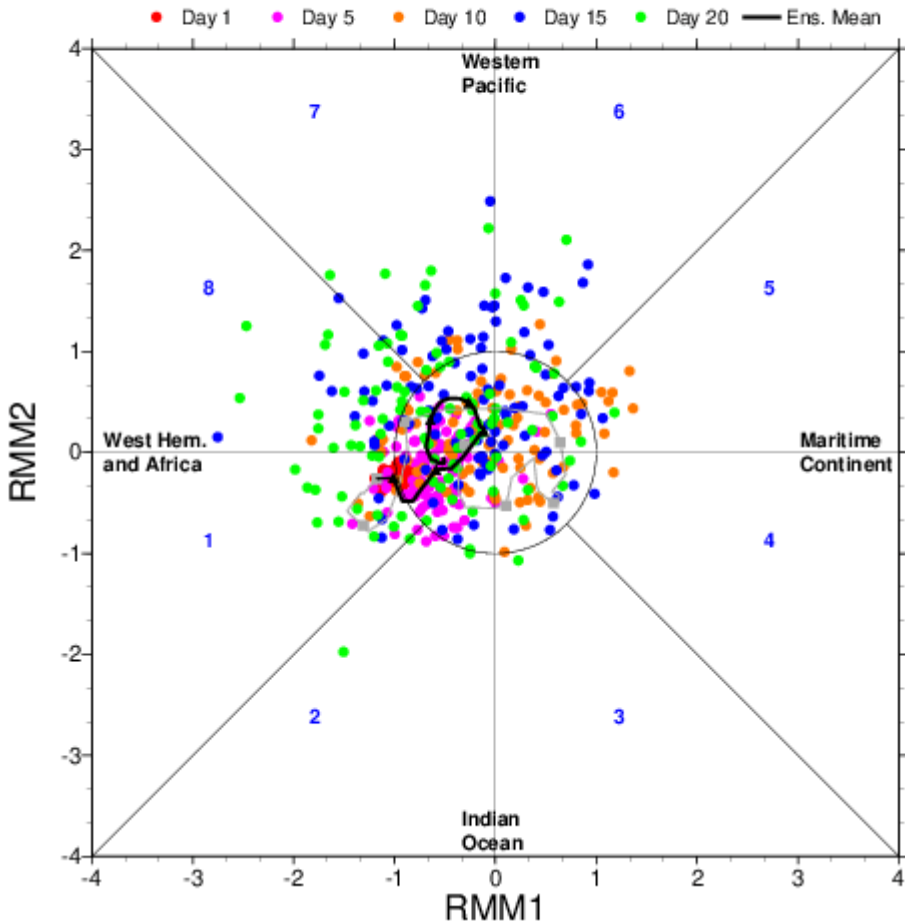
Historical data for Station Jowhar on Shabelle River



- The levels along Shabelle River (e.g., at Belet Weyne and Jowhar as shown) have been rising steadily since mid-September due to the light to moderate rains received over the catchment within the country and upstream in the Ethiopian Highlands.
- There were reports of riverine floods at Mahaday Weyne due to river breakages and moderate rains received on October 5th, 2023

## Evolution of Madden-Julian Oscillation (MJO) Index Based on ECMWF Extended Range Ensemble

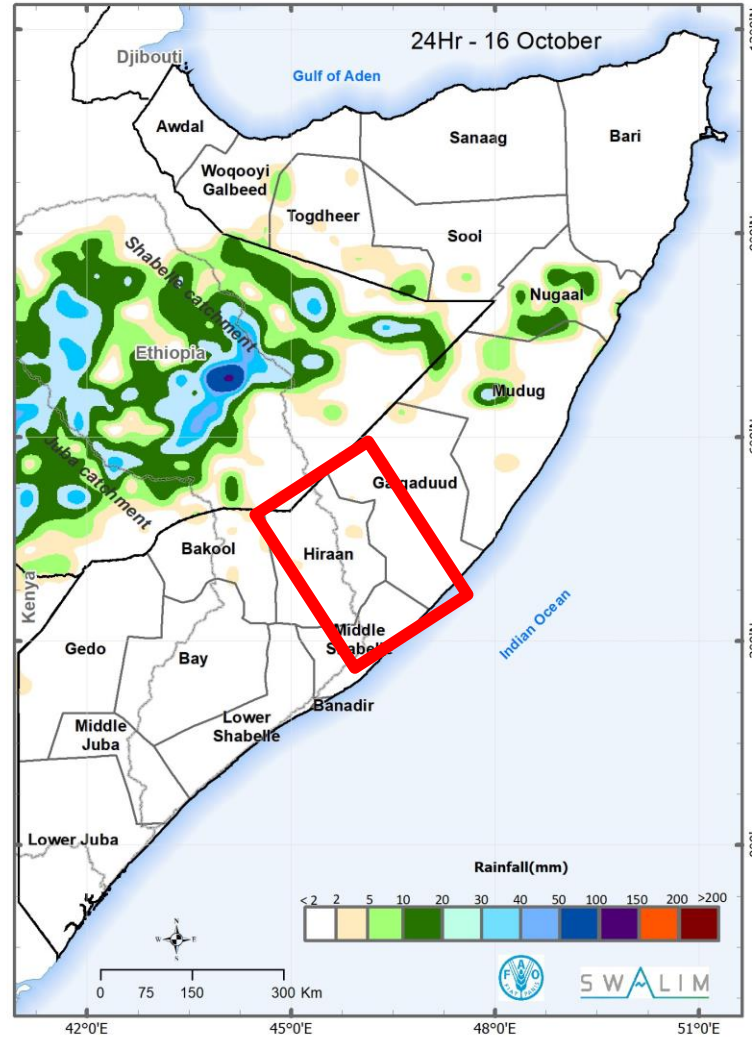
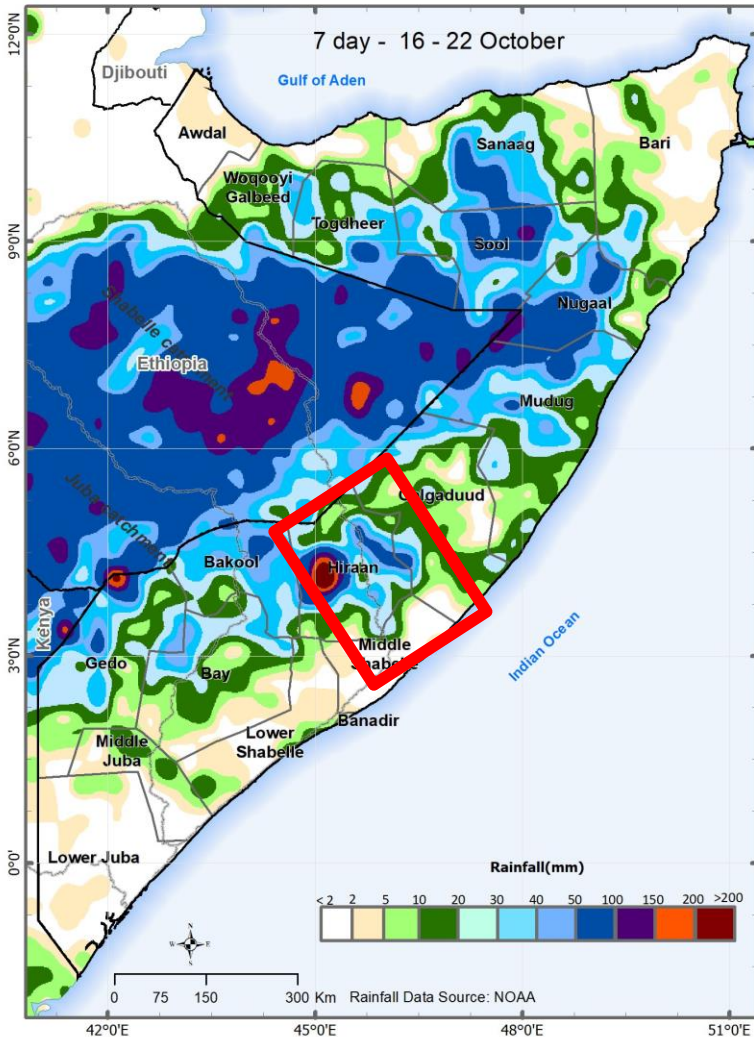
ECMWF MONTHLY FORECASTS  
FORECAST BASED 15/10/2023 00UTC



- The index weakened (moved back into the unit circle during the last three weeks of September) following a brief increase in amplitude over the IO and MC (in early to mid Sept)
- It was now centred at region 8 in the last week of September and early October with cloudiness and light rains
- It has since shifted to region 1 and is forecast to stagnate and move to region 2 (and outside the unit cycle) in the coming 2 weeks with rainfall activity over EA including Somalia
- Its reduced propagation, and therefore increased cloudiness and rainfall activity, indicates a greater influence from the low frequency El Niño state rather than the MJO.



## 7-Days and 24-hr Rainfall Forecast



### Rainfall Forecast

**Moderate to heavy rains (50 - 150mm) expected in Hiraan in the coming week (particularly as from 19<sup>th</sup> October)**

**Rains over Hiraan are likely to exceed 200 mm (which is almost equivalent to some station LTM)**

**While light to moderate rains are expected in the border regions, heavy rainfall is likely to fall over the upper catchments Shabelle River in Ethiopia Highlands**



## Impacts Associated with the Rainfall Forecast

- **Rise in water levels** along River Shabelle following the moderate to heavy rains in their upper catchments in Ethiopia posing moderate risk of flooding in the coming week (as from 19<sup>th</sup> October)
- The **heavy rains** likely over Hiraan are likely to contribute to run off from river catchment within the country **posing flash and riverine flood risk**
- **Recharge** of surface and groundwater sources
- **Wet soil conditions** favorable for crop, pasture and fodder production.



## SWALIM Action/Updates

- ❖ **FAO/SWALIM has updated the river breakages data -**
  - [Map - Status Of River Breakages Along The Shabelle River](#)
  
- ❖ **High ground maps** for evacuation in case of floods also produced
  
- ❖ **Weekly and 3 days forecast bulletins** will be produced through out the season
  
- ❖ **Alerts** in case of impending floods will be disseminated through SMS and Radio broadcasts



Food and Agriculture Organization  
of the United Nations

THANK YOU