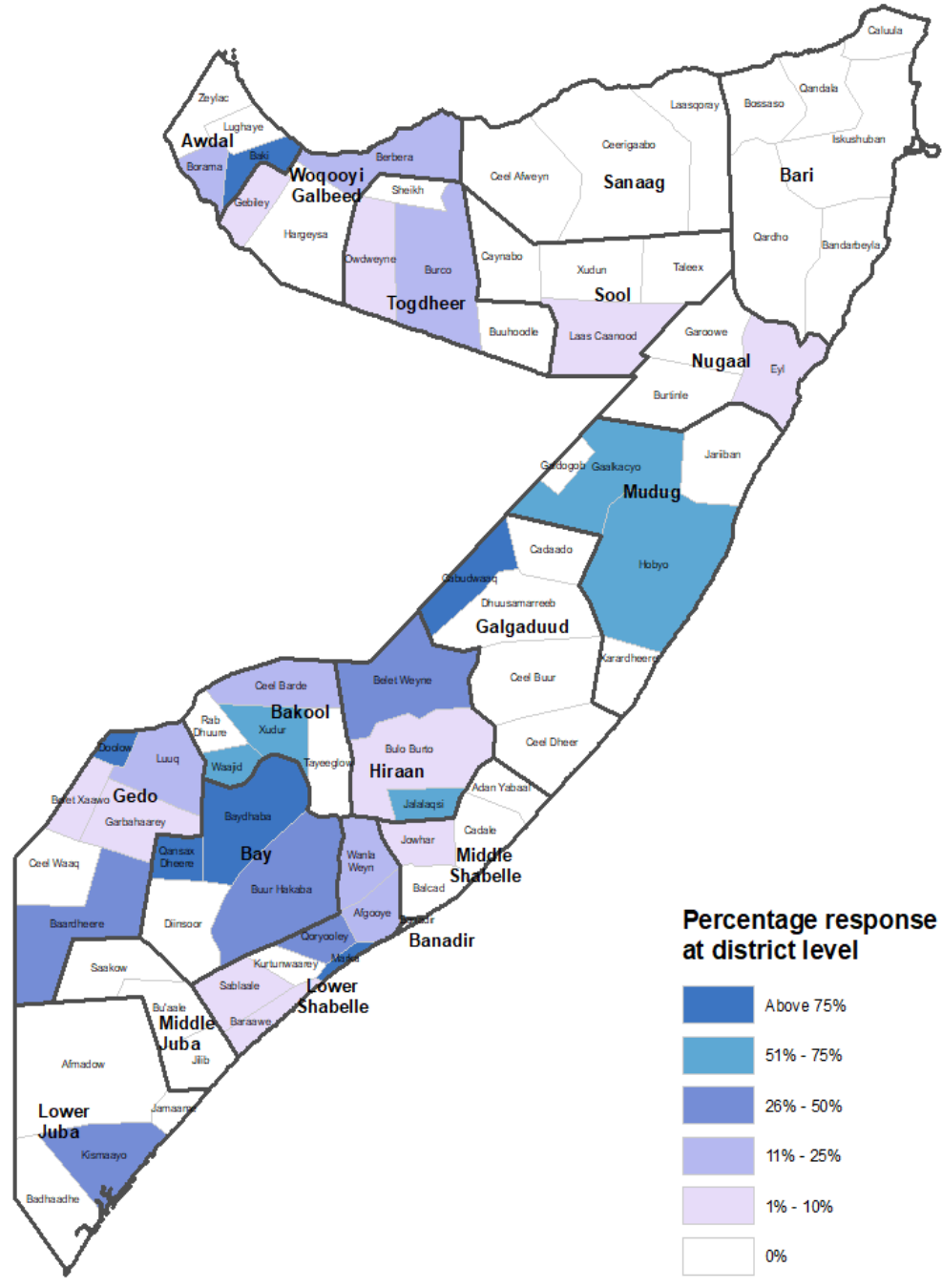
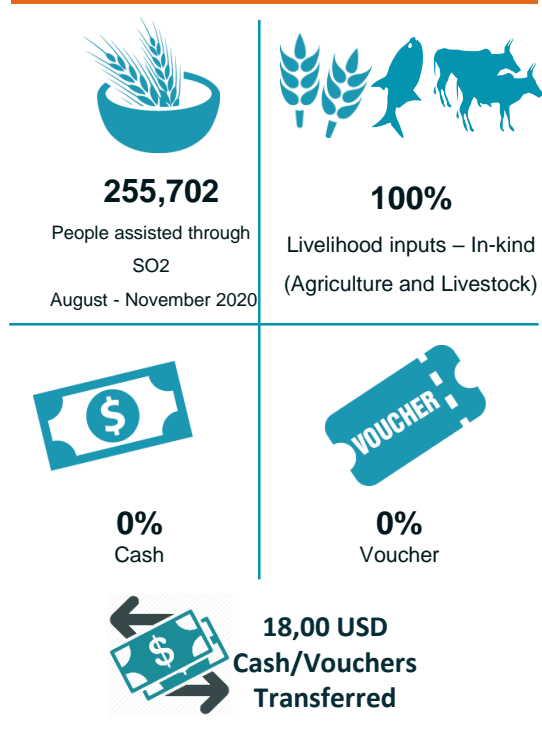


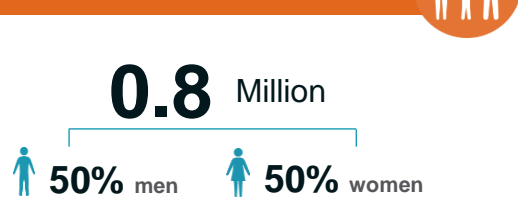
NUMBER OF BENEFICIARIES TARGETED VS ASSISTED BY DISTRICT



RESPONSE BY MODALITY



PEOPLE TARGETED



PARTNERS REPORTING



Strategic objective 2 update

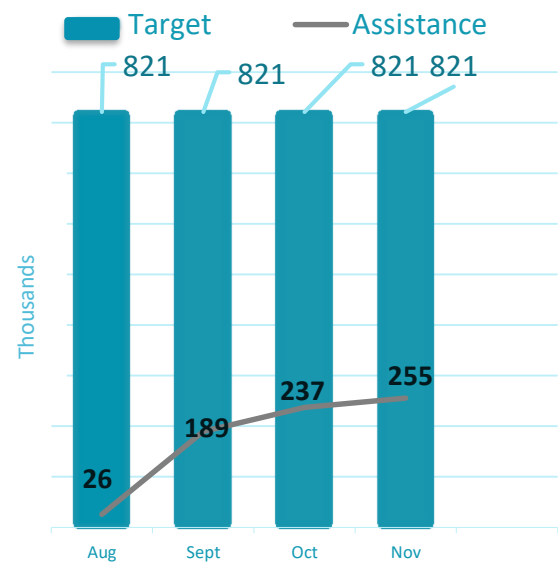


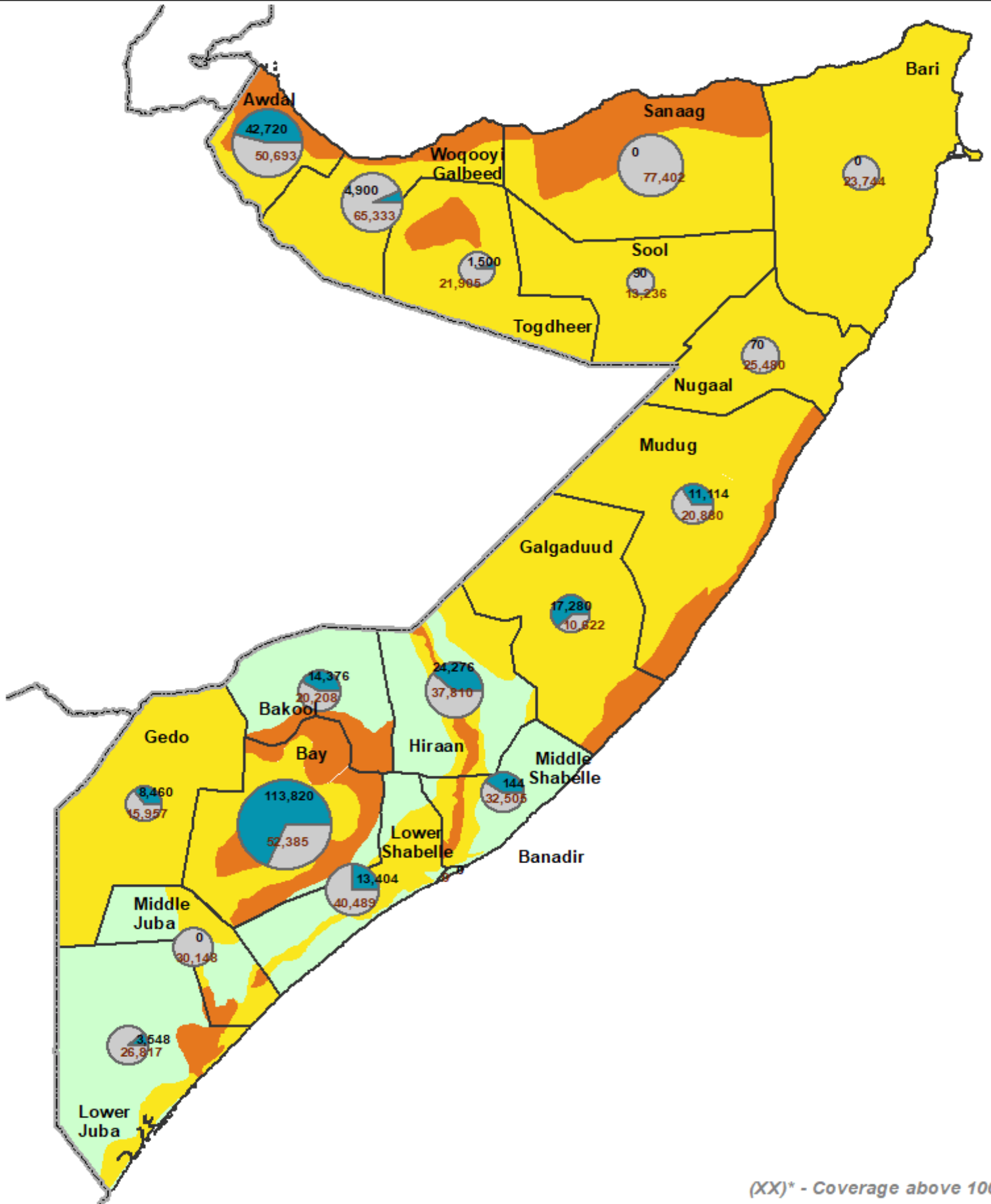
Mohamed Elmi working on his farm in Sogsogle village in Awdal, Somalia. Photo: Isak Amin, FAO, Somalia

For the responses provided in November, IRC contributed 61%, Mercy corps 21%, ADO 8%, WARDI 6% and WVI 4%. Cumulatively starting August, a total of **255,702** beneficiaries have been assisted with farm inputs, tractor hours, animal restocking, livestock treatment and distribution of fishing equipment to fisher folks). The cumulative number of people reached accounts for **31%** of the seasonal target (**821,315**)

During the month of November, FSC partners assisted **18,314** beneficiaries with seasonal inputs and livestock asset protection

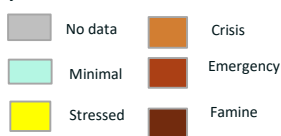
Monthly response trend: Beneficiaries assisted and the target





(XX)* - Coverage above 100%

IPC
Food Security Classification
Proj: Oct-Dec 2020



Data sources: UNGIWG, GeoNames, GAUL, UNDP Somalia (1998), FSNAU, WFP, FSC partners,

The boundaries and names shown and the designations used on this map do not imply official endorsement or acceptance by the United Nations.

Date created: 15th Dec 2020
Contact: info.somalia@fsccluster.org
Website: www.fsccluster.org/somalia
Prepared by: FSC IM

Map Reference:
ISO2_SOM_FSC_Obj2_Gapanalysis_A4P

