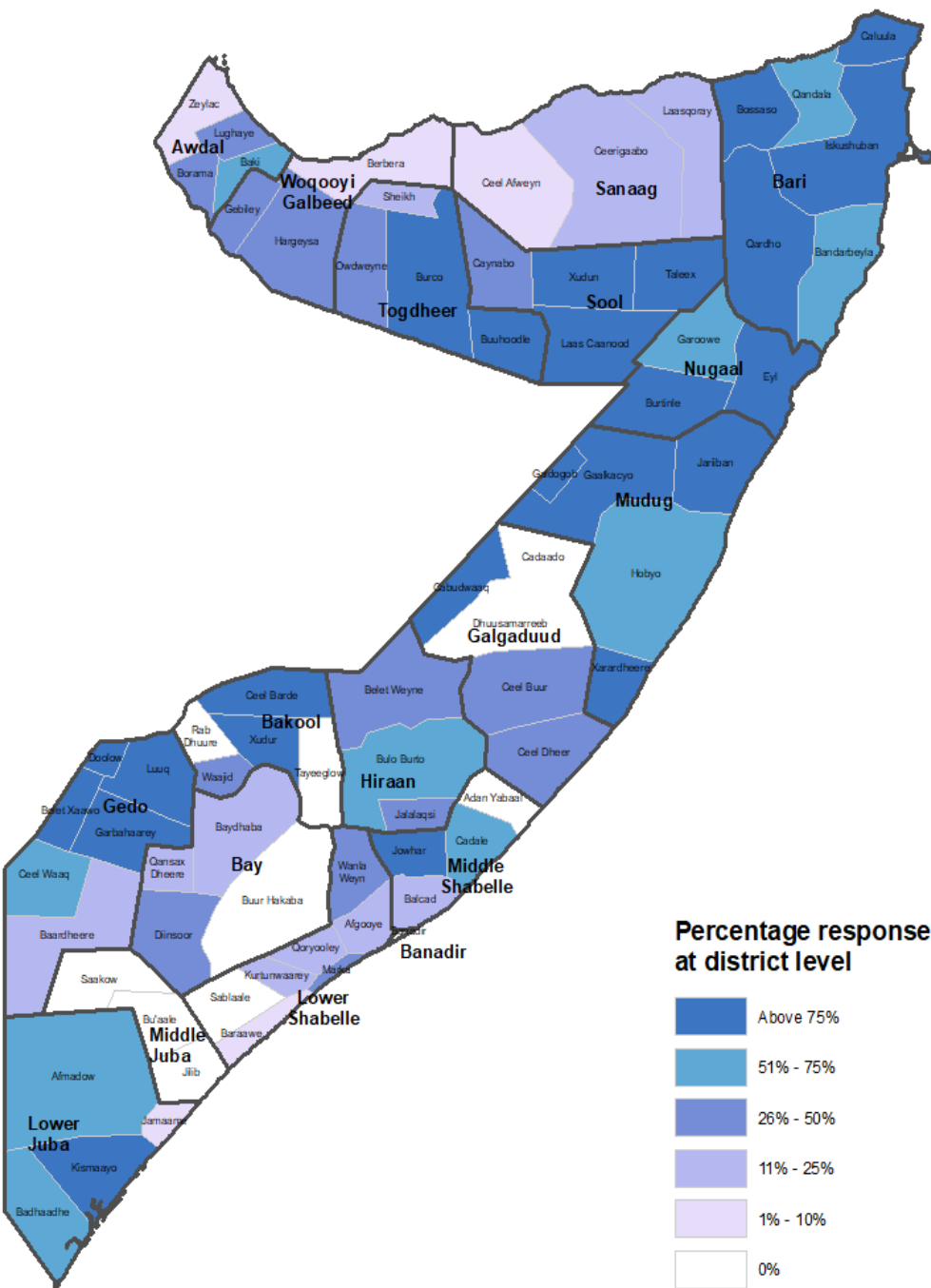
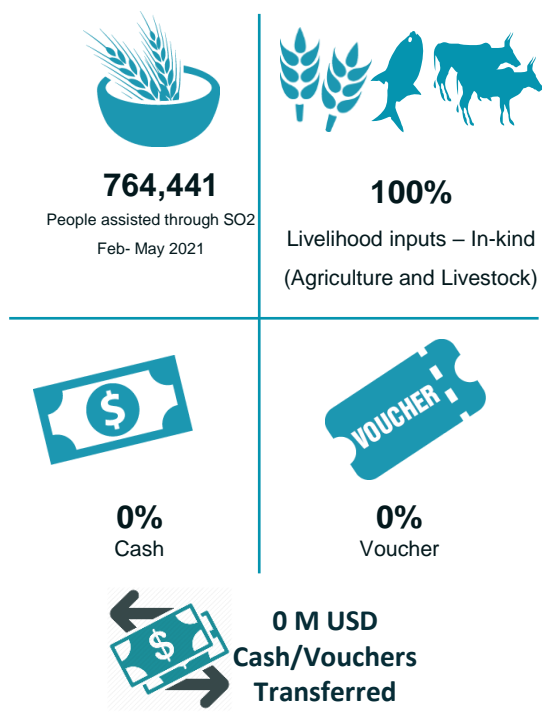


## NUMBER OF BENEFICIARIES TARGETED VS ASSISTED BY DISTRICT



## RESPONSE BY MODALITY



## PEOPLE TARGETED



## PARTNERS REPORTING



### Strategic objective 2 update



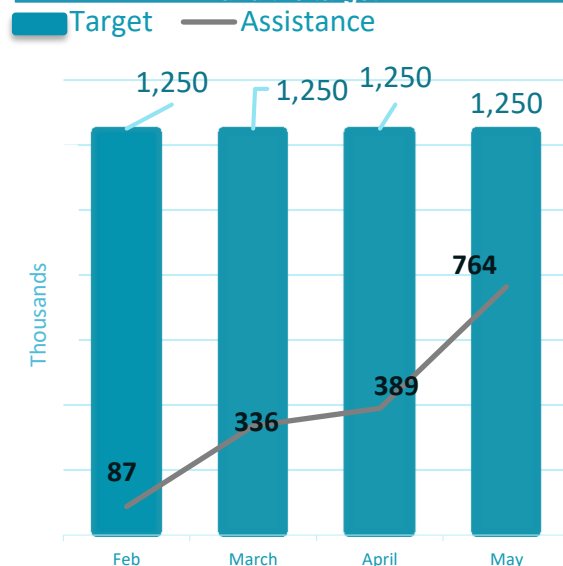
FAO and partners are providing support to farmers in Somalia to help people to survive the crisis. Photo: Muslomo Haji displays seeds received in Humbole village in Baidoa, Somalia., FAO/Arete

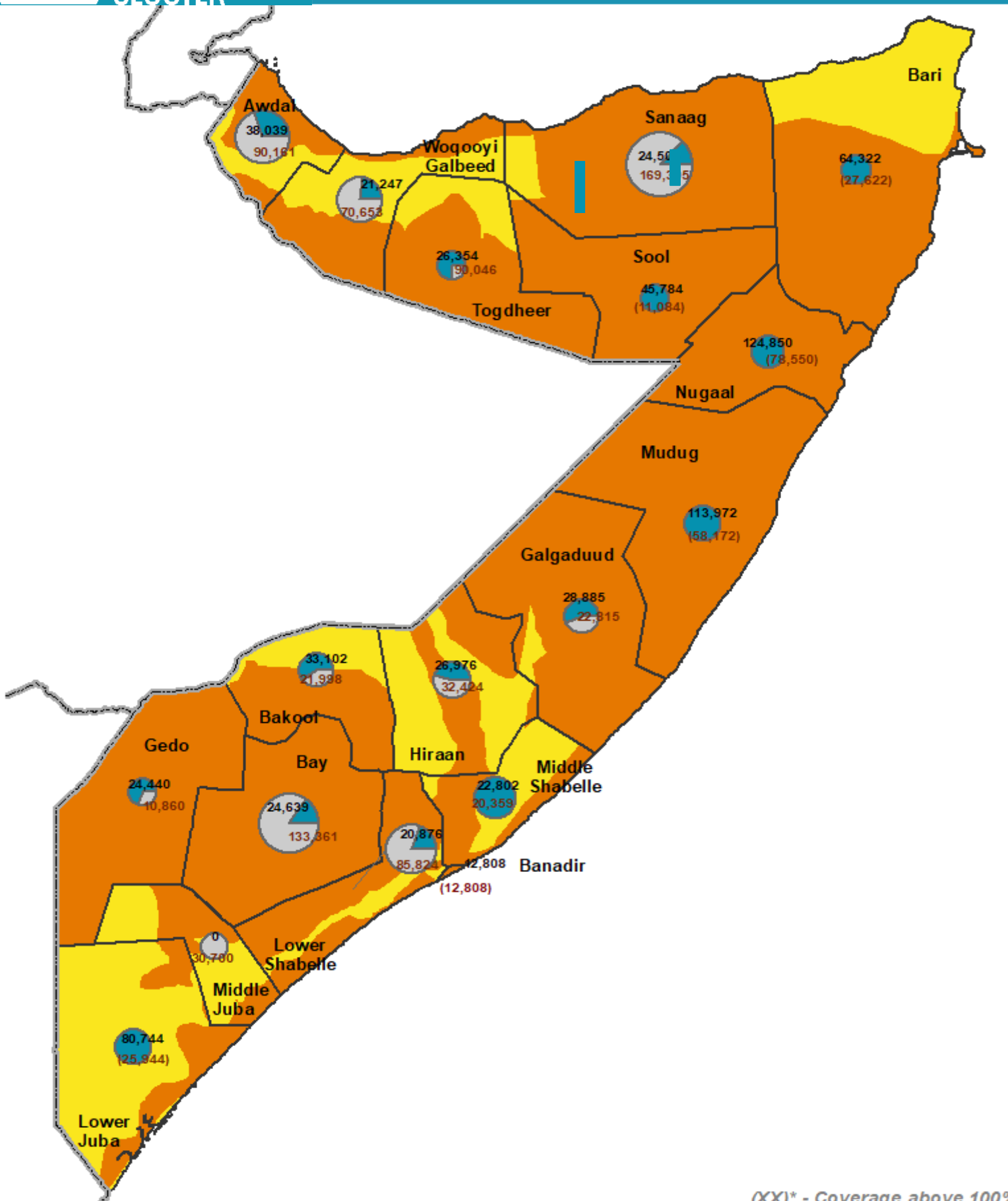
**Objective 2 (Provision of seasonal livelihood inputs & Livestock asset protection).** In April, a total of **374,924** beneficiaries have been assisted with farm inputs, animal restocking and re-distribution, animal vaccination, seeds package inputs and trainings.

Out of this, FAO responses constituted 96%, AVSI 3%, and the remaining 1% was provided by SOS, DRC and Mercy corps combined.

Cumulatively starting February, **764,441** beneficiaries have been assisted with farm inputs, animal restocking, CAHWs and GAP training, livestock treatment and CCPV vaccination. This translates to **(61%)** of the seasonal target (**1,250,300**). The season began in February and will run up to July 2021.

### Monthly response trend: Beneficiaries assisted and the target





(XX)\* - Coverage above 100%

Date created: 15<sup>th</sup> June 2021  
Contact: info.somalia@fscluster.org  
Website: www.fscluster.org/somalia  
Prepared by: FSC IM

Map Source: FSNAU/FEWS NET.

**IPC Food Security Classification**  
Proj: April-Sep 2021

	No data	Crisis
	Minimal	Emergency
	Stressed	Famine

**Boundary**

- International
- Regional
- District

Data sources: UNGIWG, GeoNames, GAUL, UNDP Somalia (1998), FSNAU, WFP FSC partners,

The boundaries and names shown and the designations used on this map do not imply official endorsement or acceptance by the United Nations.