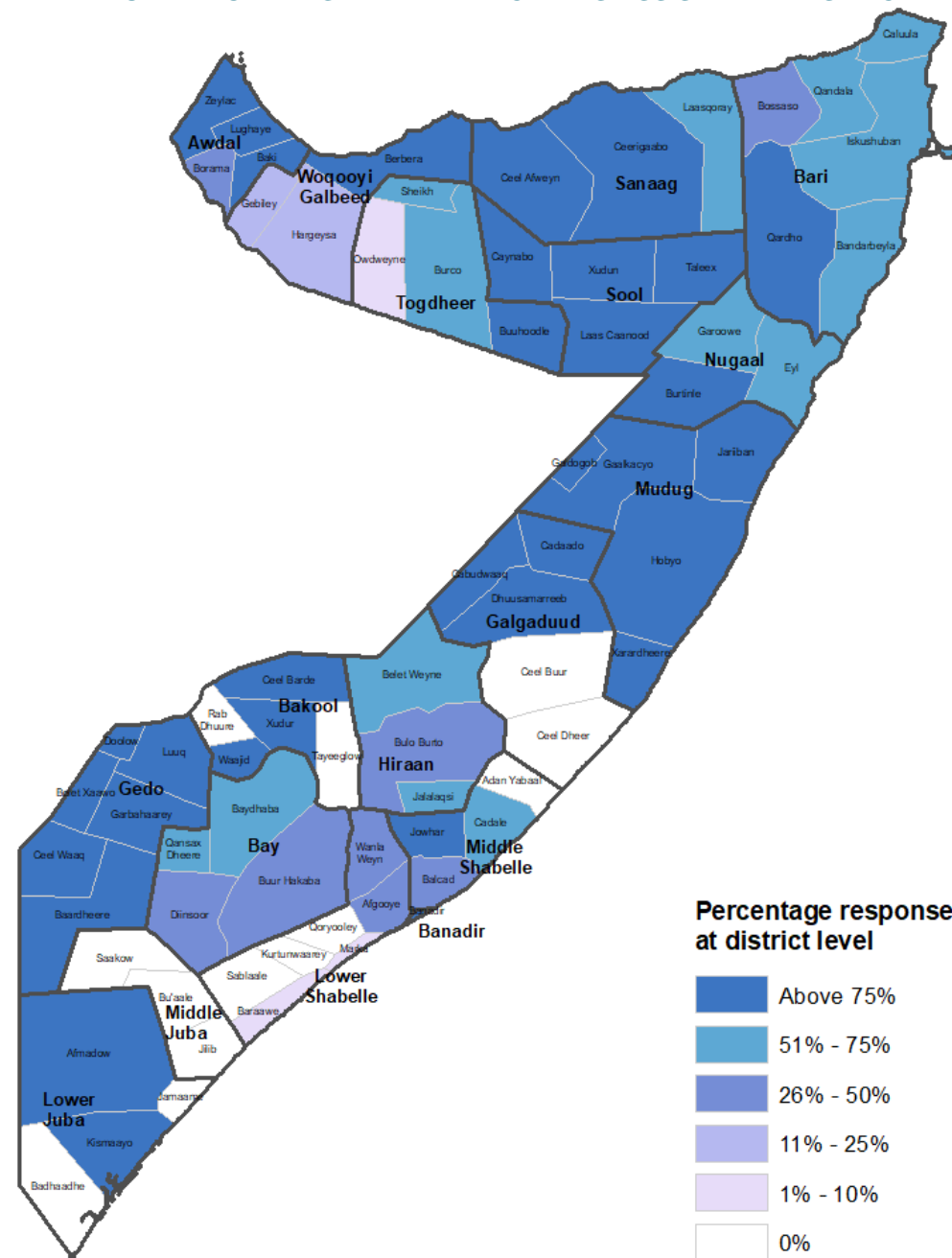
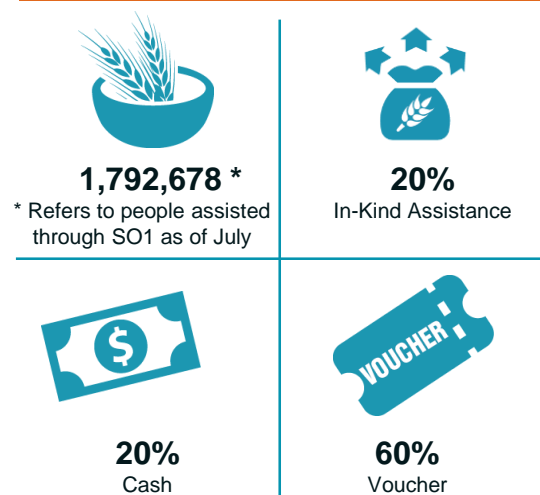


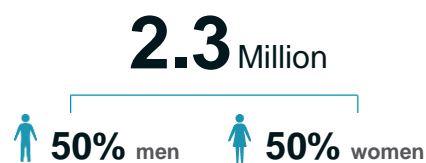
NUMBER OF TARGETED BENEFICIARIES ASSISTED BY DISTRICT



RESPONSE BY MODALITY



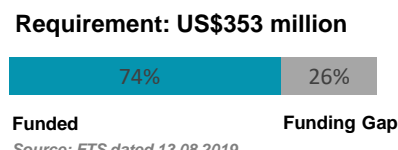
PEOPLE TARGETED



PARTNERS REPORTING



FUNDING REQUIRED



Strategic objective 1 update

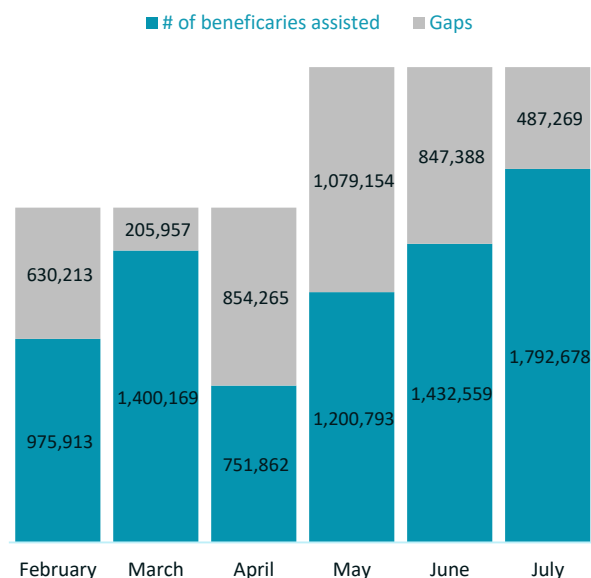


Cash and scope card distribution in Somalia
Photo: WFP/ Kevin Ouma

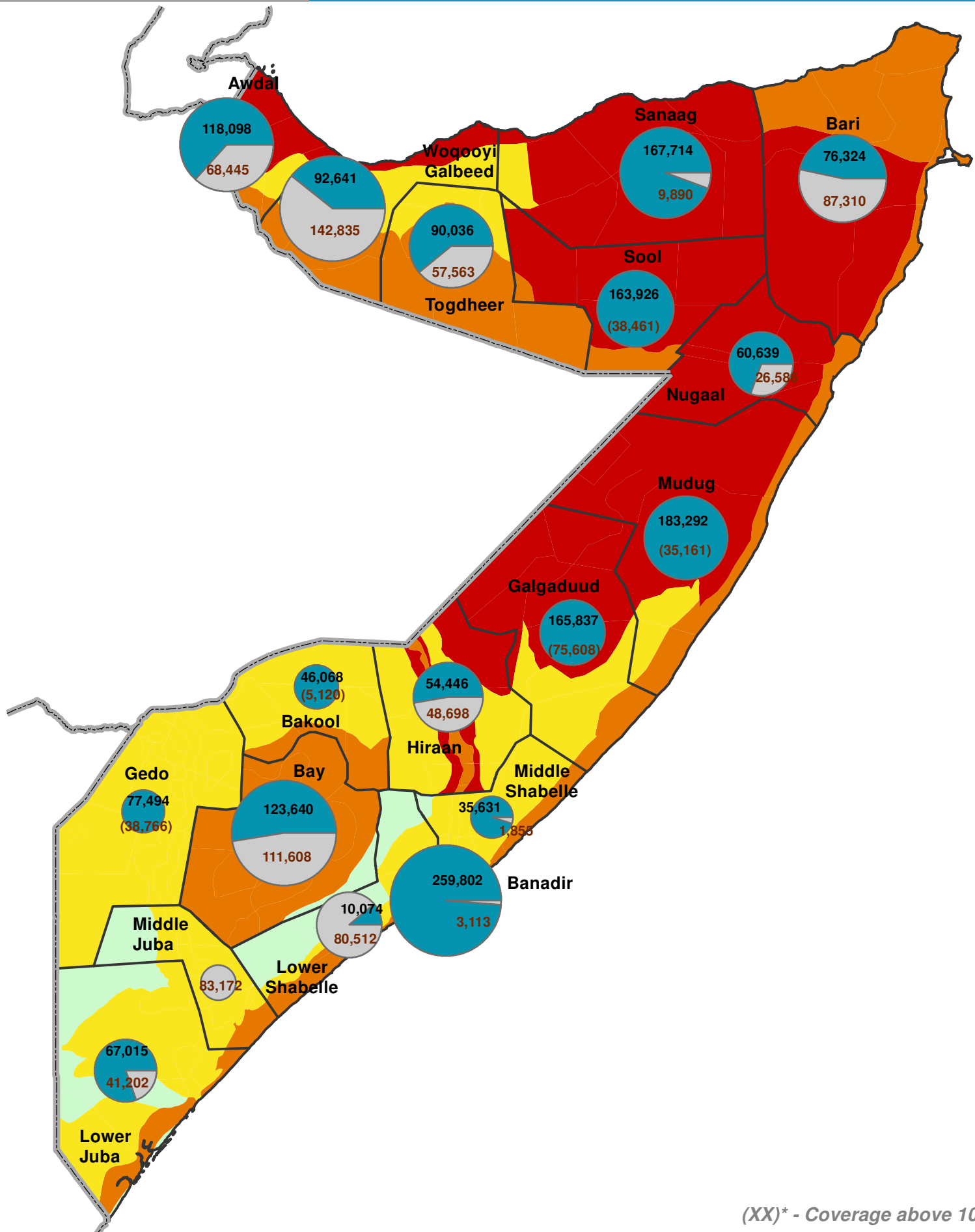
FSC partners assisted **1,792,678** out of **2,279,947** targeted (**79% achievement**). This means, for emergency unconditional transfers/assistance to people in IPC 3 or worse, there is a 16% increase comparing with June responses. The upward trend in terms of number of people assisted is not geographically even.

Less than 55% of the people targeted for relief assistance reached in five regions: namely, Bari, Bay, Lower Shabelle, Middle Juba, and Woqooyi Galbeed. In Middle Juba, no responses reported due to insecurity. WFP response constitutes 76%, ACTED & OSPAD 4% each, CARE 3%, NRC & Islamic Relief 2% each while the rest contributed 1% or below.

Monthly response 2019: Beneficiaries assisted



The upward trend in assistance should be sustained to mitigate impact of the extended hunger season. Notably, people assisted with unconditional transfers are mostly those in IPC 3 or worse and experience significant consumption gaps.



(XX)* - Coverage above 100%

