

MYANMAR: Food Security Cluster Partners' Presence Map

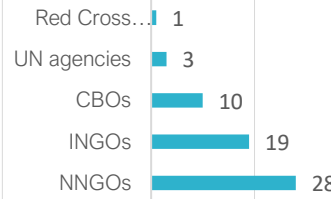
January to June 2022



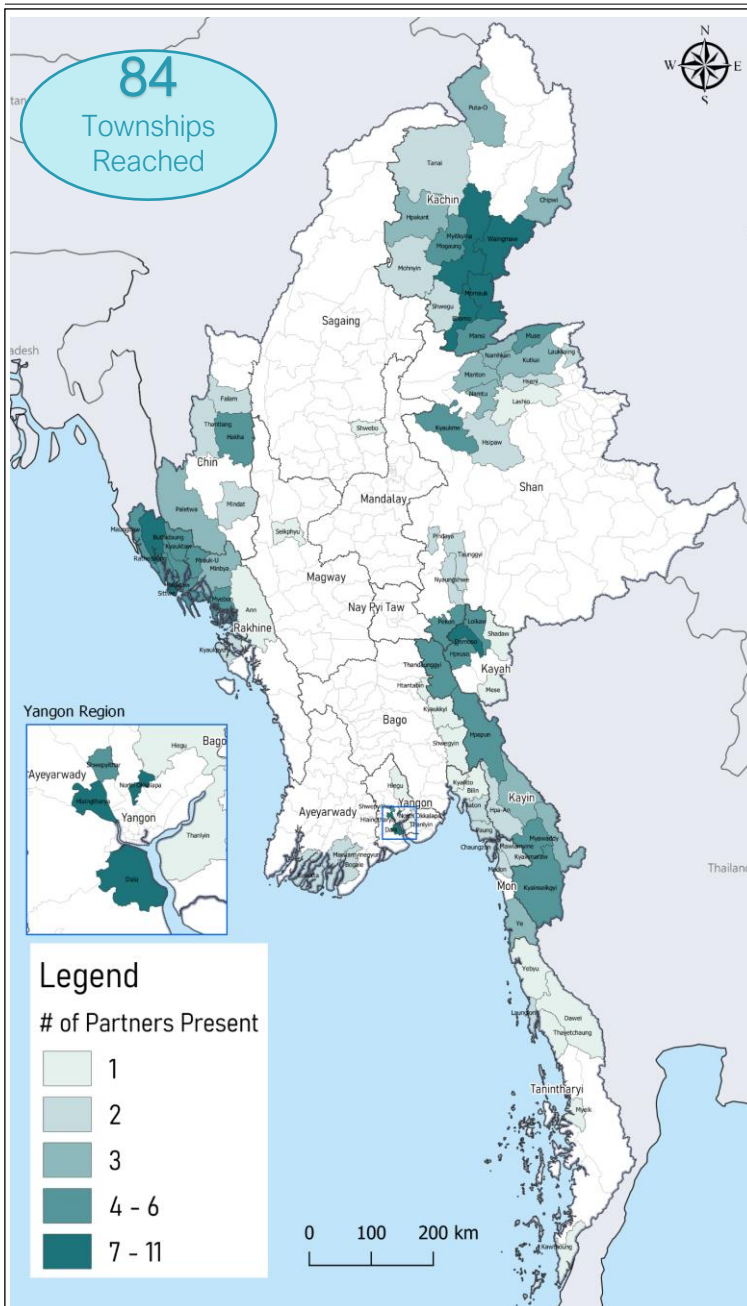
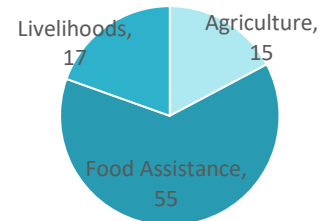
This map indicates the areas where Food Security Cluster (FSC) partners have provided humanitarian assistance from January to June 2022 and their nature (food assistance and/or Agriculture-livelihoods). It is based on the FSC 5Ws submission. Hence, it only reflects activities submitted by partners. FSC encourages all Food Security actors to fill FSC's 5WS matrix. This mapping will be updated periodically to provide accurate information.

Total number of Partners

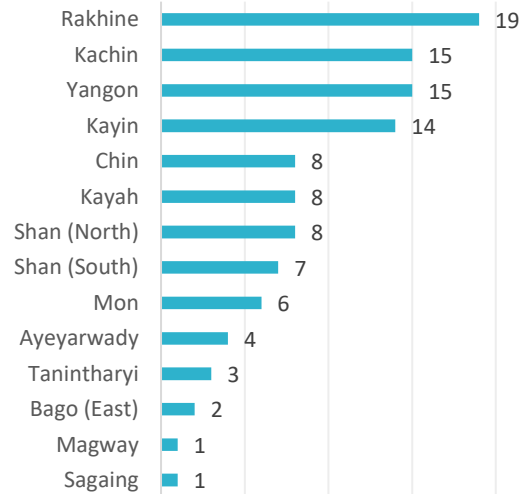
61



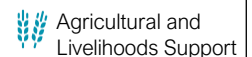
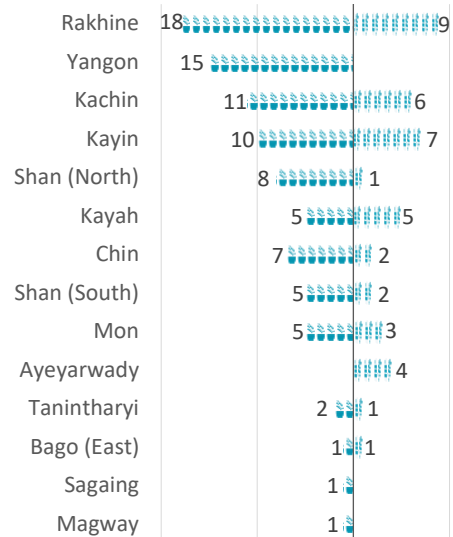
Number of Partners by FSC Main Interventions



Number of Partners by State/Region



Number of Partners by FSC Main Interventions

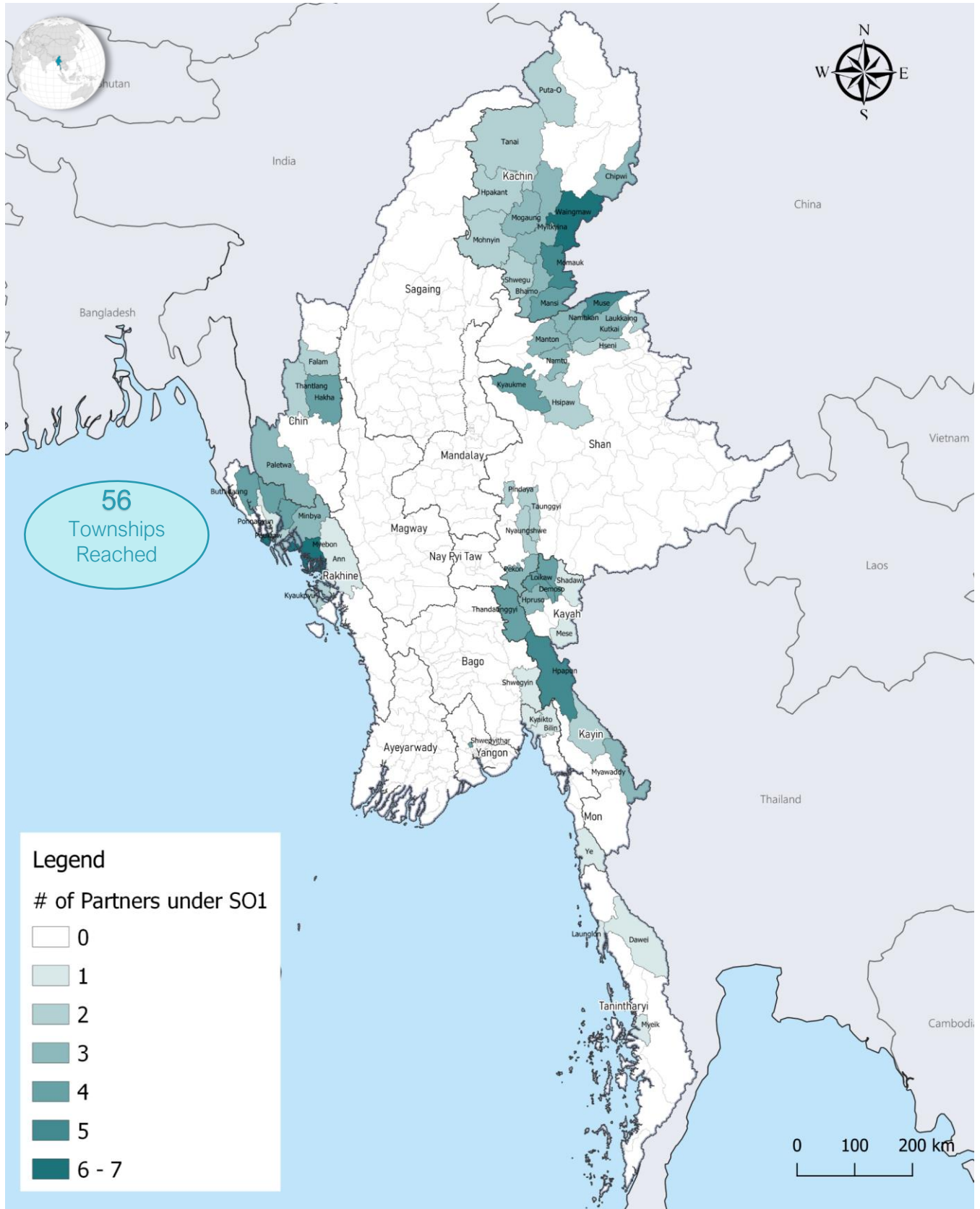


The boundaries and names shown and the designations used on this map do not imply official endorsement or acceptance by the UN.

HRP SO1 Food Assistance to IDPs: Partners' Presence Map*

January to June 2022

*SO1: Only IDPs

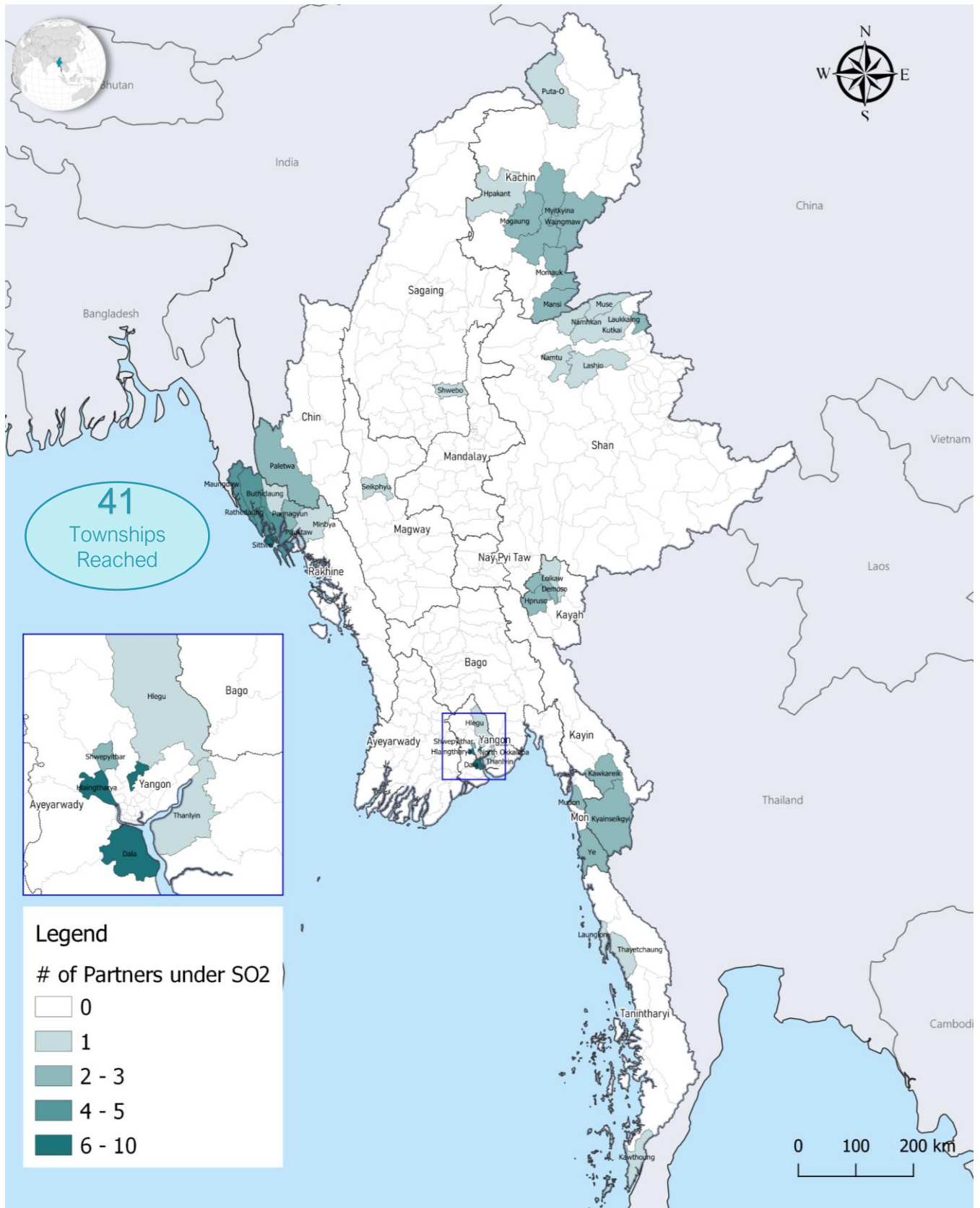


The boundaries and names shown and the designations used on this map do not imply official endorsement or acceptance by the UN.

HRP SO2 Food Assistance to Non-IDP: Partners' Presence Map*

January to June 2022

*SO2: All vulnerable groups exclude IDPs

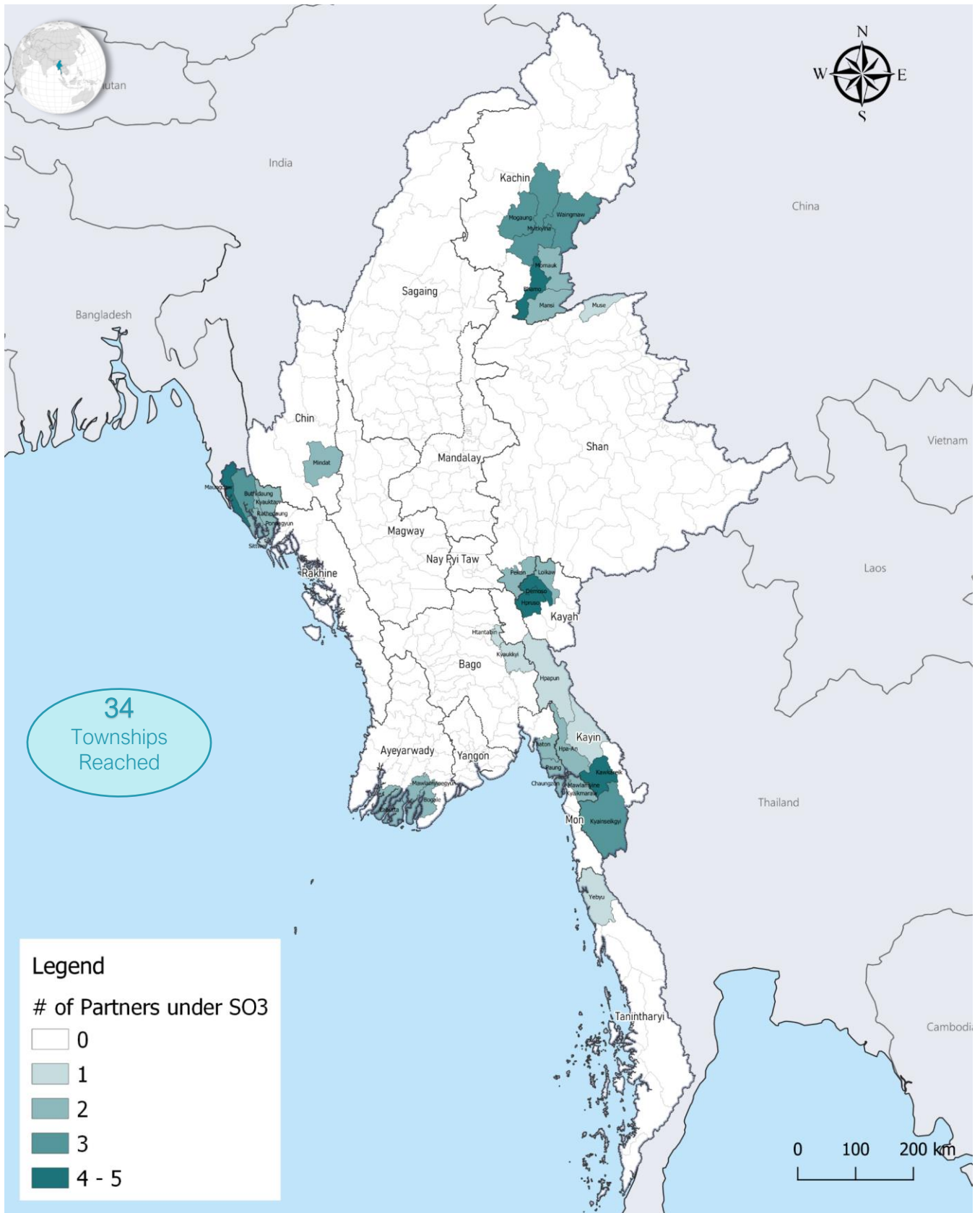


The boundaries and names shown and the designations used on this map do not imply official endorsement or acceptance by the UN.

HRP SO3 Agriculture/Livelihoods: Partners' Presence Map*

January to June 2022

*SO3: All vulnerable groups



Legend

of Partners under SO3

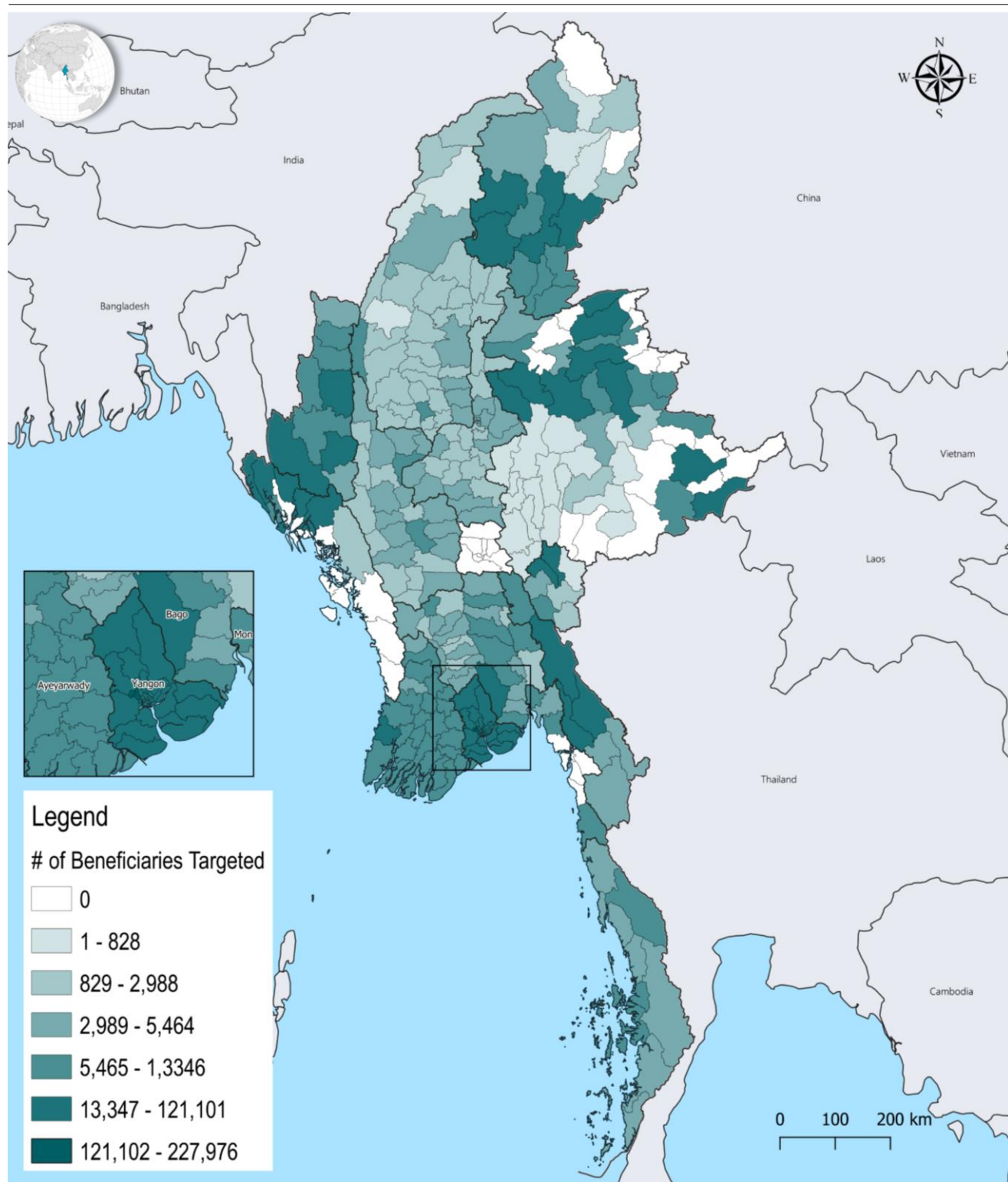
- 0
- 1
- 2
- 3
- 4 - 5

The boundaries and names shown and the designations used on this map do not imply official endorsement or acceptance by the UN.

HRP 2022 : FSC Targeted Area Map

January to December 2022

For 2022, FSC targets 13.2 Millions vulnerable and crisis-affected people in 289 townships out of total 330 townships in Myanmar. Cluster partners will scale up efforts to reach those targeted townships. FSC encourages all FS partners to work on improving access to vulnerable people and to reach 2022 targeted populations. The map below shows the FSC's target per township for 2022.



The boundaries and names shown and the designations used on this map do not imply official endorsement or acceptance by the UN.

Feedback/Suggestion: info.myanmar@fsccluster.org

Production date: 04-May-2022

Data sources: FSLC/FSLC Partners

More information: <http://fsccluster.org/myanmar>