



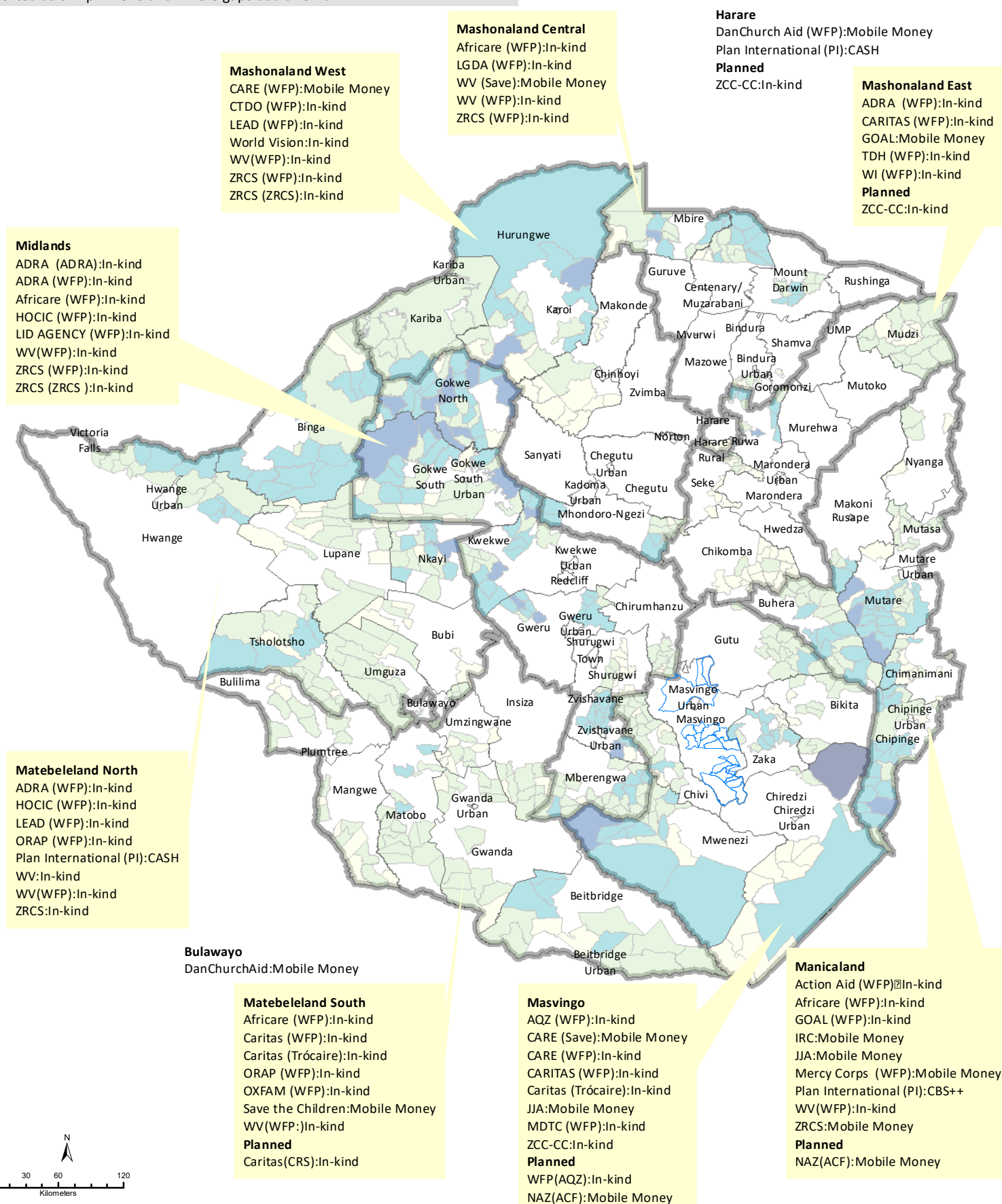
# **FSC Map atlas**

**As of March 2020**

## Summary:

1. Partners Presence SO1 - Wards in which individuals are receiving food assistance
2. Partners Presence SO2 - Wards in which individuals are receiving agriculture and livelihood assistance
3. GAP Analysis - People targeted and people reached by province
4. FSL interventions: Implementation of COVID-19 mitigation and protection measures

**About:** This map shows wards where interventions have been conducted in the month of March 2020. It clearly identifies wards where no intervention has been reported as of April 2020 and where gaps could remain.



**Beneficiaries reached by Ward**

< 2,000	5,001 - 10,000
2,001 - 5,000	10,001 - 20,000
	>20,000
	Planned activities

The designations employed and the presentation of material in the map(s) do not imply the expression of any opinion on the part of WFP concerning the legal or constitutional status of any country, territory, city or sea, or concerning the delimitation of its frontiers or boundaries.

Date Created: 30 Apr 2020 - Contact: [info.zimbabwe@fsccluster.org](mailto:info.zimbabwe@fsccluster.org)

Website: <https://fsccluster.org/zimbabwe> - Prepared by: FSC IM

Map Reference: FSC\_SO1\_Partners\_Presence\_March

Data sources: Reached Poulation: FSC Partners - Boundaries: OCHA

**About this map:** This map shows wards where interventions have been conducted in the month of March 2020,

**Planned**  
**Mashonaland East**  
FAO: Livestock vaccination, disease surveillance  
**Mashonaland West**  
AfroStainfarmtech: Soil conservation

**Midlands**  
ADRA Austria (ADRA): Equipment and training  
ADRA (WFP): Agric related rehabilitation  
Heifer International (WHH): Training, extension for smart agric  
Welthungerhilfe (WHH): Training, extension for smart agric  
**Planned**  
ZCC--CC: Drought-tolerant seeds

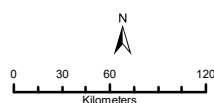
**Manicaland**  
SAT: Training, extension for smart agric  
Africa Ahead: (Christian Aid) Drought-tolerant seeds  
AWET (Christian Aid): Drought-tolerant seeds  
DanChurchAid: Equipment and training  
IRC: Diptank rehab and provision of dipping chemicals  
LEAD (FAO): Drought-tolerant seeds, Stockfeed and fodder  
MeDRA (Christian Aid): Drought-tolerant seeds  
Practical Action: Training, extension for smart agric  
WV (FAO): Drought-tolerant seeds, Stockfeed and fodder

**Matabeleland North**  
CTDO; APT; WHH (WHH): Diptank rehab and provision of dipping chemicals

**Matabeleland South**  
CTDO; APT; WHH (WHH): Diptank rehab and provision of dipping chemicals  
DanChurchAid: Diptank rehab and provision of dipping chemicals  
JJA: Nutrition gardens  
Practical Action: Agric related rehabilitation  
**Planned**  
Caritas: (CRS): Soil reclamation

**Masvingo**  
MeDRA (Christian Aid): Drought-tolerant seeds  
ZCC-CC: Training, extension for smart agric  
**Planned**  
ZCC-CC: Drought-tolerant seeds

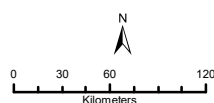
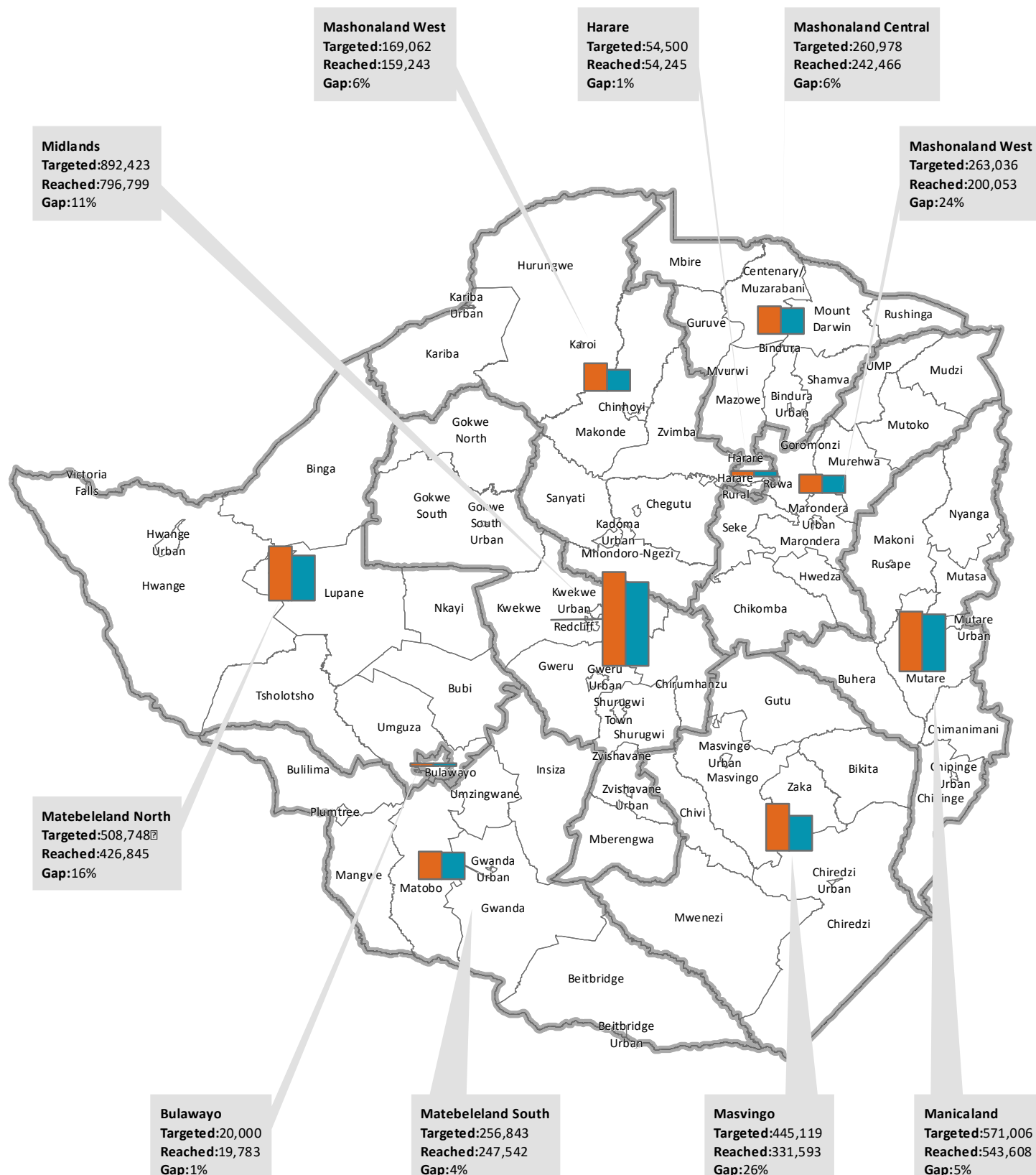
**Manicaland: Planned**  
FAO: Livestock vaccination, disease surveillance, Agric related rehabilitation, Diptank rehab and provision of dipping chemicals  
LEAD (FAO): Nutrition gardens. Restocking small livestock, Stockfeed and fodder  
WV (FAO): Nutrition gardens, Restocking small livestock, Stockfeed and fodder  
ZCC-CC: Drought-tolerant seeds



**People reached by agric/livelihood assistance**

< 500	1,001 - 2,500	Planned activities
501 - 1,000	2,501 - 10,000	
	> 10,000	

The designations employed and the presentation of material in the map(s) do not imply the expression of any opinion on the part of WFP concerning the legal or constitutional status of any country, territory, city or sea, or concerning the delimitation of its frontiers or boundaries.  
Date Created: 29 Apr 2020 - Contact: [info.zimbabwe@fsccluster.org](mailto:info.zimbabwe@fsccluster.org)  
Website: <https://fsccluster.org/zimbabwe> - Prepared by: FSC IM  
Map Reference: FSC\_SO2\_Partners\_Presence\_March  
Data sources: Reached Population: FSC Partners - Boundaries: OCHA



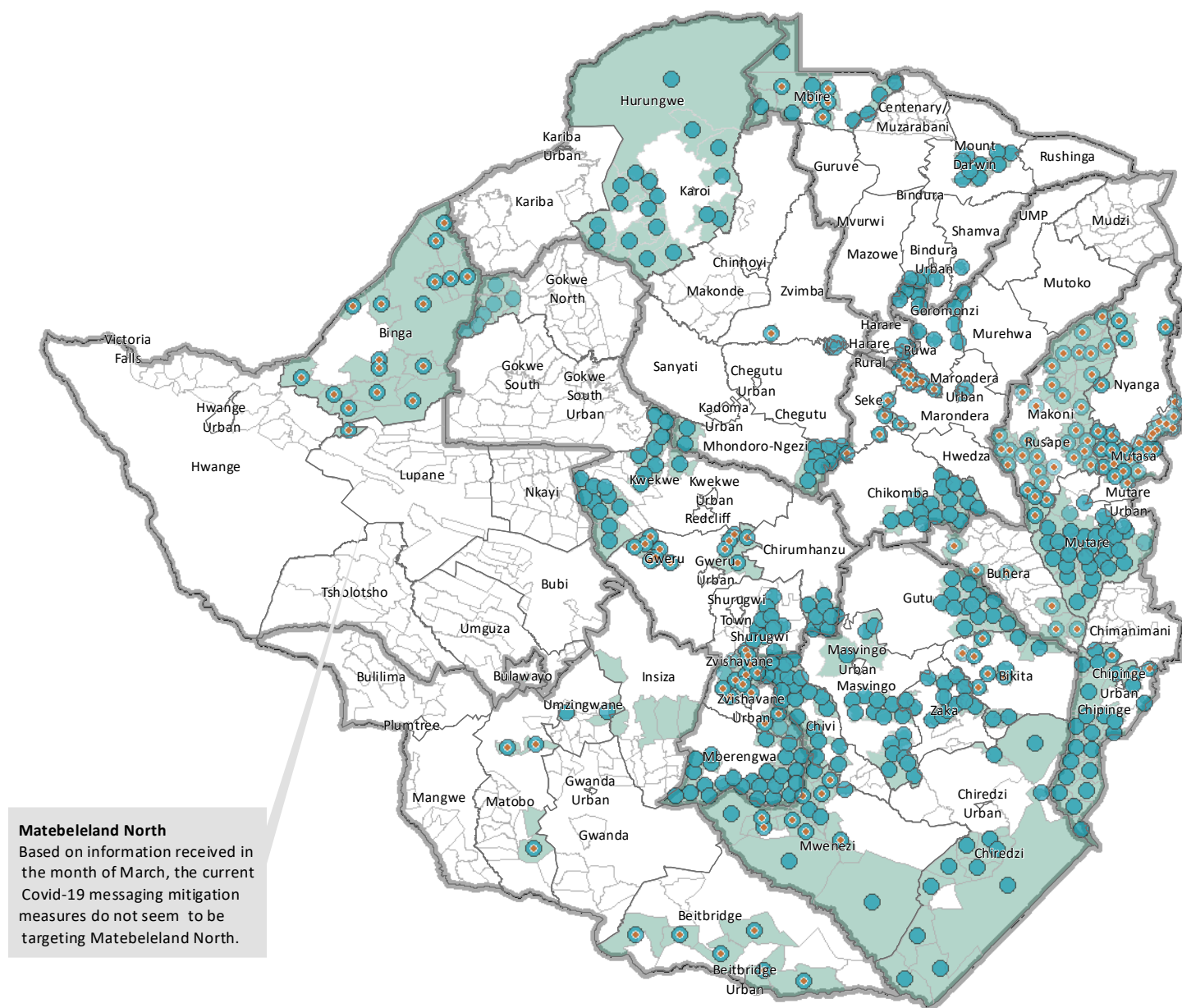
People Targeted

People Reached (Food Assistance)

The designations employed and the presentation of material in the map(s) do not imply the expression of any opinion on the part of WFP concerning the legal or constitutional status of any country, territory, city or sea, or concerning the delimitation of its frontiers or boundaries.

Date Created: **30 Apr 2020** - Contact: **[info.zimbabwe@fsccluster.org](mailto:info.zimbabwe@fsccluster.org)**  
Website: **<https://fsccluster.org/zimbabwe>** - Prepared by: **FSC IM**  
Map Reference: **FSC\_GAP\_Analysis\_Province\_March**  
**Data sources:** People targeted, People reached: FSC Partners - Boundaries: OCHA





**Legend**

- WASH/Adding soap to basket
- Health(Medical Officer/referral services)

- Response coverage
- Messaging coverage

The designations employed and the presentation of material in the map(s) do not imply the expression of any opinion on the part of WFP concerning the legal or constitutional status of any country, territory, city or sea, or concerning the delimitation of its frontiers or boundaries.  
Date Created: 30 Apr 2020 - Contact: [info.zimbabwe@fsccluster.org](mailto:info.zimbabwe@fsccluster.org)  
Website: <https://fsccluster.org/zimbabwe> - Prepared by: FSC IM  
Map Reference: FSC\_COVID-19\_mitigation\_measures\_March  
Data sources: Covid-19 mitigation measures: FSC Partners - Boundaries: OCHA