

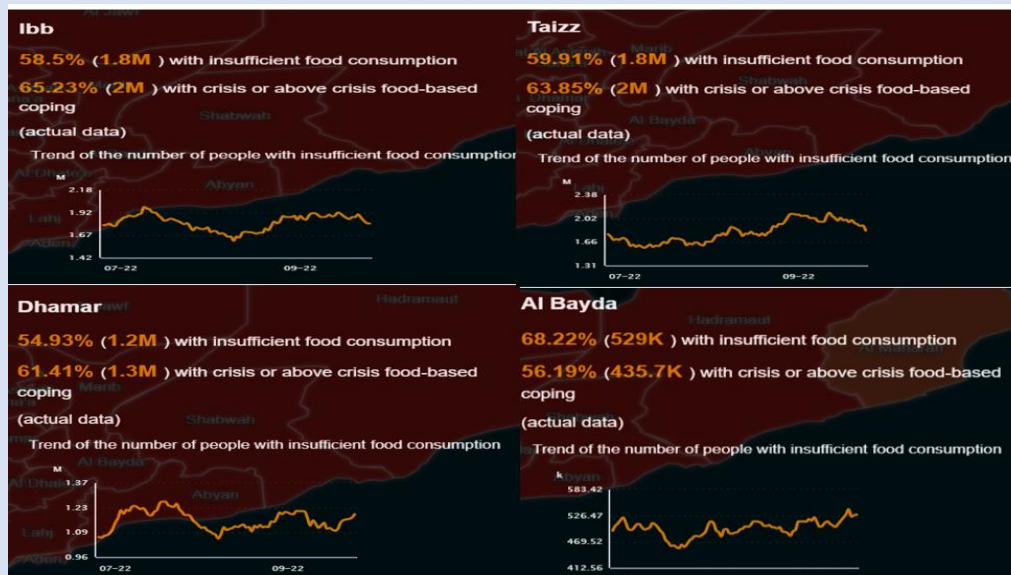
**FGD Indicator Monitoring Matrix**  
**Monthly Food & Nutrition Insecurity Indicator Monitoring: Current and Projected**  
**August 2022**

**FGD: Ibb-Hub**

Indicator	Current Month	Forecast for the coming month
<b>Food Consumption</b>	<p><b>mVAM:</b> The FCS situation of Ibb, Dhamar, Albayda and Taiz in August 2022 is as the following:</p> <ul style="list-style-type: none"> <li>- The number of people with insufficient food consumption was 1.65 M composed of about 55% of the total population in Ibb in August 2022, compared to 50% in the previous month.</li> <li>- People with acceptable food consumption composed about 45% in August 2022 that decreased by 5% and 11% compared with the previous month and July 2021 respectively.</li> <li>- The number of people with insufficient food consumption was 1.1M composed of about 54% of the total population in Dhamr in August 2022, compared to 53% in the previous month.</li> <li>- People with acceptable food consumption composed about 46% in August 2022 that decreased by 1% and 18% compared with the previous month and July 2021 respectively.</li> <li>- The number of people with insufficient food consumption was 510K composed of about 67% of the total population in Albada in August 2022 compared to 59% in the previous month.</li> <li>- People with acceptable food intake composed about 33% in August 2022 that decreased by 8% and 19% compared with the previous month and July 2021 respectively.</li> <li>- The number of people with insufficient food consumption was 1.7M composed of about 57% of the total population in Taizz in August 2022 compared to 53% in the previous month.</li> <li>- People with acceptable food consumption composed about 43% in August 2022 that decreased by 4% and 14% compared with the previous month and July 2021 respectively.</li> </ul> <p><b>Overall Statement:</b></p> <ul style="list-style-type: none"> <li>- The highest prevalence of insufficient food consumption over the past two months in all Ibb hub.</li> <li>- People with insufficient food intake in August 2022 increased by 1 to 8% compared with July 2022. In addition, there was a decrease in the number of people with acceptable food intake by about 11 to 19% during August compared to the previous year 2021.</li> <li>- In many northern SBA areas, the food assistance scaled back during 2022 led to increasing consumption gaps for many households, deteriorating their overall access to food relative to last year and reducing the number of households facing Crisis (IPC Phase 3) or worse outcomes.</li> </ul>	<p><b>Likely Scenario:</b> Food insecurity continued to deteriorate during August Food consumption marked the worst level over the past four years around 51 percent in areas under Sana'a-based authorities could not access enough food to meet their minimum dietary needs, and inadequate food consumption passed critically high levels of 40 percent.</p> <p>Humanitarian assistance distribution has a positive impact to minimize the deterioration of the situation with low agricultural activities, delayed agriculture season, and low-income opportunities.</p> <p>Food insecurity is expected to be less grim than the 19 million people projected at the beginning of 2022 to reach Crisis or worse levels of acute food insecurity (IPC Phase 3)</p>

- About 55 to 63% of people in Ibb hub classified in crisis or above crisis level of food-based strategies in July and August 2022.

and above) by the end of the year.

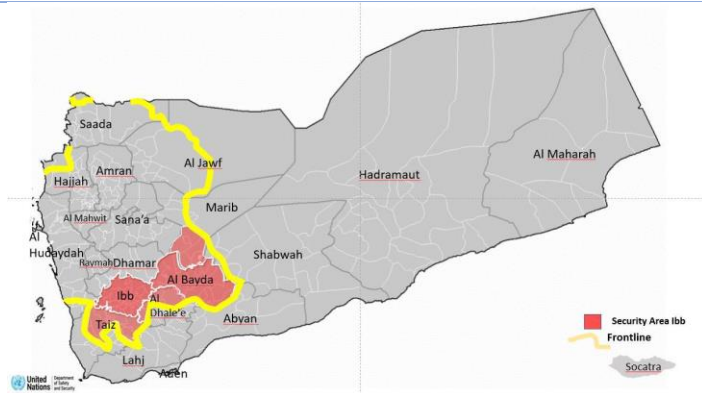


**Conflict**

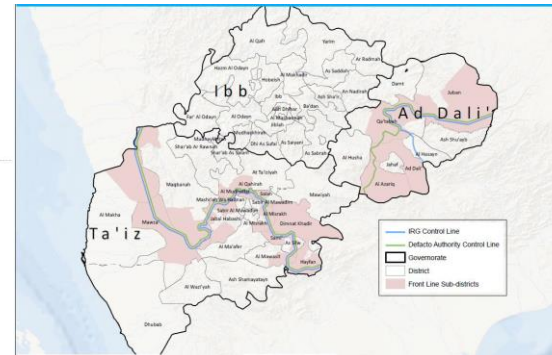
Four Governorates are belonging to Ibb Hub includes: Ibb, Al Bayda, Dhamar and Taiz of which three are completely belonging to AA (Dhamar, Al Bayda and Ibb), while Taiz Governorate is divided into two parts between AA & IRG see the maps below.

**Likely Scenario:**

- Truce is expected to continue and the number of IDPs also expected to stay stable in the next months.
- Conflict impacts on livelihood and food security are likely to continue during the upcoming months due to the overall situation in the country.



Map 1.



Map 2.

During August 22, the situation was calm in the whole Governorates due to the ongoing truce despite some incidents from time to time mainly in Taiz.

**Overall Statement:**

During August 22, the whole governorates were calm and the number of IDPs to some extent was stable. Ibb and Dhamar received the big number of IDPs from the surrounding Governorates. However, Dhamar, Ibb and Al Bayda governorates are a stable area where conflict no more remains a threat to the lives and livelihoods of the people living in the governorates but there is indirectly impact from the overall conflict situation due to the prices increasing of fuel, food commodities, transportation...etc.

**Livelihood assets & strategies**

**Ongoing livelihood practices:**

The main livelihood activities in the Governorates belonging to Ibb Hub during August 22, are agriculture production including plant production, grazing, animal husbandry, Qat production and privet business. Government salary is one of the main sources but in the last few years up to this reporting period salary paid occasionally twice a year except in Taiz which is divided between AA & IRG. However, it has been noted that there is sharply increasing in Qat planting areas at the whole governorates due to the demand increasing and quick revenue. Agricultural activities during August, 22 decreased due to late season of rain.

**The main source of food & income:**

**Livelihood practices**

The agricultural activities will continue the same as August with no significant changes both (crops and livestock) production. Due to good precipitation during August which is likely to continue in August).

**Source of food & income**

Agriculture production in the whole Governorates belonging to Ibb Hub is considered as one of the main source of food and incomes during August 22. Also Qat cultivation becomes one of the main sources of incomes. Other non-agriculture activities are remittances, privet business and humanitarains assistance

**Overall Statement:**

Local food production is still low and the sharply increasing of Qat cultivation is forming seriously threats to the availability of land to grow crops as well to the water availability. The production is not enough to meet the need s of people. Although the lack of government salary is remain on of the challenges while humanitarian assistances to house hold covered a big gap in getting the needs from food.

Most of the population will continue depending on incomes from agriculture production and other sources privet business and remittances as well qat production.

**Overall Statement:**

The situation will remain the same as of August with low agricultural income as well increasing on Qat cultivation will lead to reduce crops production and will threat water availability due to high need of water for irrigation.

**Minimum Food Basket**

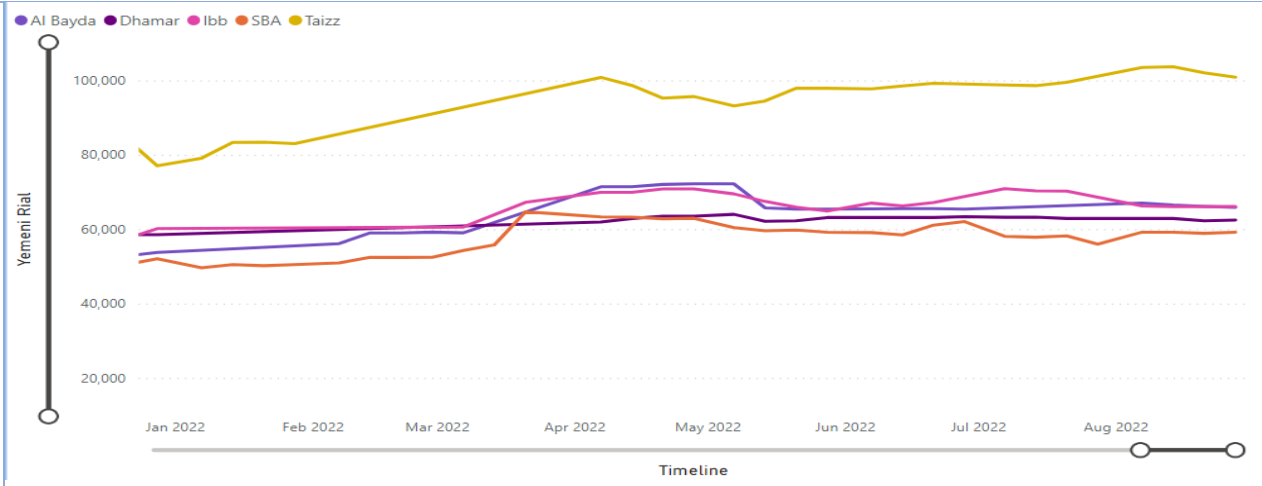
**Cost:** The average cost of MFB during August as the following in Ibb hub:

		Taizz	Ibb	Al baydha	Dhamar
MFB	MFB cost YER	102540	66146	66395	62551
	Last month %	4%	-6%		-1%
	Last year %	48%	35%	32%	21%

**Trends & drivers:** The average cost of MFB 64,660 YER in August 2022 in Ibb, Albayda and Dhamar decreased by -6% and -1% respectively, while 102540 YER in Taiz increased by 4% compared to the cost in the previous month and increased in the whole hub by average 21 to 48% compared to August 2021 in respective order.

- The figure below shows the MFB cost in Ibb hub with the average in SBA, the cost is slightly lower than the average cost at SBA except in Taiz.
- The local currency exchange rate is the major driver of the high costs of MFB, In addition, Fuel price hikes and fluctuations in its supply may affect the cost of transportation and commodity movement that contributed to the price increase of imported commodities.

**Likely Scenario:** It is likely for the MFB cost to go up/down linked to the price changes of key ingredients, mainly the price changes in imported cooking oil, wheat flour, rice, and sugar. Among others drivers, the current security situation and reduction in food imports are the major factors that are likely to keep influencing this price trend.



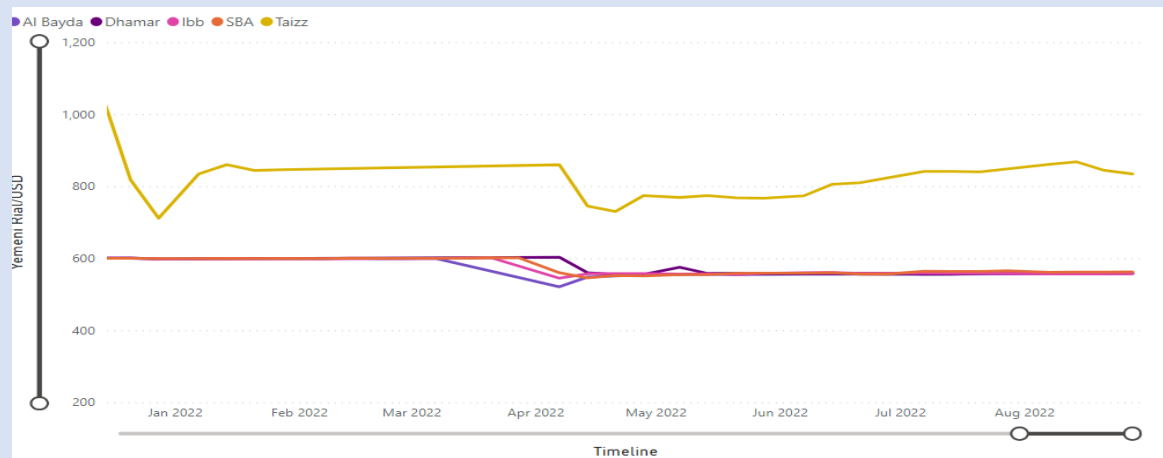
**Exchange Rate**

**Rate:** The average rate of YER / 1 USD in August at Ibb hub is as the following:

		Taizz	Ibb	Al baydha	Dhamar
Exchange rate	YR/1USD	852	557	557	558
	Last month %	1%	0	0	0
	Last year %	7%	-7%	-7%	-7%

**Trends & drivers:** The exchange rate in March 2022 has remained relatively stable (No changes) compared to July 2022 557 YER/1USD and 852 YER/1USD at Taizz, however, decreased by -7% compared to the same period of the previous year 2021.

**Likely Scenario:** The current situation of riyals will likely remain stable, with slight changes by 0.1-1%. The prices of main commodities increased due to other factors such as the fuel prices changes.



**Overall Statement:** Although the exchange rate has remained stable in the Ibb governorate since April 2022, the food prices have risen such as imported rice, sugar, and cooking oil by 7%, 9% and 6% in respective compared to April 2022.

**Fuel**

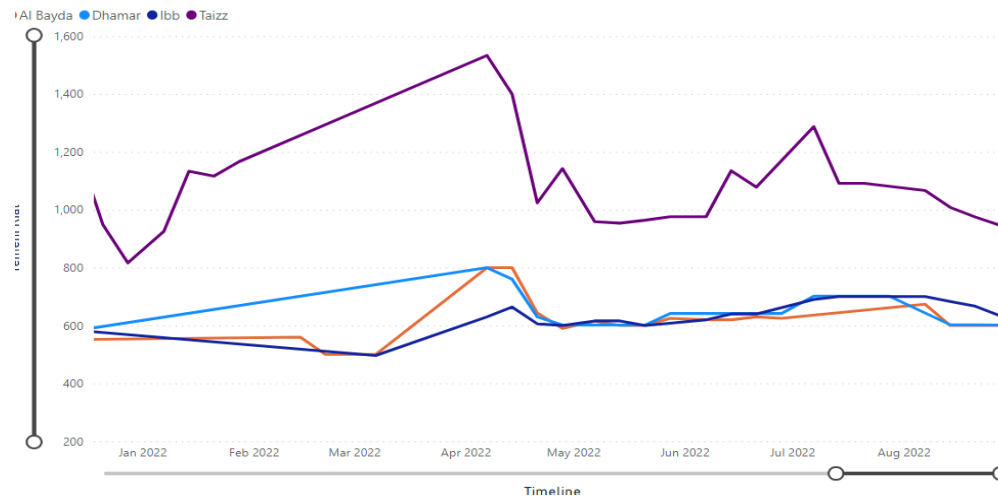
**Prices:** the fuel prices (unofficial) change for diesel and petrol in August 2022.

		Taizz	Ibb	Al baydha	Dhamar
Diesel	YR/L	1463	821	789	897
	Last month %	-4%	-9%		-13%
	Last year %	108%	36%	32%	61%
Petrol	YR/L	1392	785	693	693
	Last month %	-6%	-5%		-5%
	Last year %	107%	32%	13%	23%
House gas	YR/Cyl	7340	5360		6150
	Last month %	0	0		1%
	Last year %	38&	26%		21%

**Likely Scenario:** The fuel coming through Al-Hudaydah port continues.

This will likely continue to effect the distribution/movement of goods, and price changes in agricultural production costs.

- Prices of diesel and petrol decreased during August 2022 compared to the previous month by an average of -4 to -13%, however, increased by 13 to 69% in the whole Ibb hub except Taizz by more than 100%. Generally, the prices of petrol and diesel increased by more than 30% compared to same period of the previous year 2021. In the below figure shows the official price of diesel and petrol showed highly increasing from January till February 2022 as shown in the figure below. Fuel prices changes in the global market, availability in local markets, and discharge of imported fuel at the ports are the major factors that are keeping the fuel prices changing.
- Cooking gas commodities recorded an increase by 30% compared to August 2022.



***Impact on livelihoods (specify):***

The impact of the high price of fuel on household income, transportation, and supply chain and on any other issues that are important for Ibb hub. The diesel and petrol prices increased during first half of the year 2022, led to affect the production of food transported and between governorates, raising fruit and vegetable prices. These high fuel prices will increase the cost of irrigating land, in seasons when needed, possibly leading to a significant reduction in local agricultural production.

	<p><b>Trends &amp; drivers:</b> The fuel price remain within high prices and are available in the parallel market compared to the previous year.</p> <p><b>Overall Statement:</b> Though fuel prices available and decrease since April 2022 compared to early the year 2022, the fuel crisis ongoing since mid-2020 in northern governorates has continued to negatively affect livelihoods and put upward pressure on prices of food, water, and other essential goods.</p>																
<p><b>Humanitarian Assistance</b></p>	<p><b># assisted:</b> the total of people assisted by both (emergency food assistances and livelihood assistances) in Ibb hub governorates during August 2022 according to FSAC monthly reports was 1,160,239 The table below summarizes the kind of assistance / Governorate:</p> <table border="1" data-bbox="325 581 1186 852"> <thead> <tr> <th>Gov.</th> <th># BNFs of EFA Assistance</th> <th># BNFs of Livelihoods Assistance</th> </tr> </thead> <tbody> <tr> <td>Ibb</td> <td>132749</td> <td>10206</td> </tr> <tr> <td>Al Baydha</td> <td>85291</td> <td>409</td> </tr> <tr> <td>Taiz</td> <td>596109</td> <td>120554</td> </tr> <tr> <td>Dhamar</td> <td>210195</td> <td>4726</td> </tr> </tbody> </table> <ul style="list-style-type: none"> <li>- <b>Access (specify):</b></li> <li>- All districts in the Ibb hub are accessible for humanitarian partners except those at the frontline.</li> </ul> <p><b>Impact on food consumption: Trends:</b> <b>Overall Statement:</b> the outlook on food insecurity is expected to be less grim than the 19 millions of people projected at the beginning of 2022 to reach Crisis or worse levels of acute food insecurity (IPC Phase 3 and above) by the end of the year. Some assumptions for these projections – that conflict would intensify and humanitarian assistance would significantly reduce due to insufficient funding – were disproved while the ripple effects of the war in Ukraine on the international markets had not been fully considered in the analysis. Currently, the IPC analysis is being updated.</p>	Gov.	# BNFs of EFA Assistance	# BNFs of Livelihoods Assistance	Ibb	132749	10206	Al Baydha	85291	409	Taiz	596109	120554	Dhamar	210195	4726	<p><b>Access (specify)</b> Almost all Ibb hub governorates fully accessible to humanitarian partners.</p> <p><b>Likely Scenario:</b> The provision of emergency food assistance is expected to continue at current levels.</p>
Gov.	# BNFs of EFA Assistance	# BNFs of Livelihoods Assistance															
Ibb	132749	10206															
Al Baydha	85291	409															
Taiz	596109	120554															
Dhamar	210195	4726															
<p><b>Remittances</b></p>	<p><b>Sources &amp; relevance:</b> Immigration to foreign country is an old culture in the Republic of Yemen which significantly contributed in the previous time and still to date contributing in the stability and food security of people. However, a lot of people in the whole Governorate belonging to Ibb Hub counting on remittances. Dhamar as one of the</p>	<p><b>Likely Scenario:</b> the situation will stay as it is, nevertheless there is a big concern from the change on the policy particularly at Saudi Arabia upon the new regulation that</p>															



Yemeni Governorate has a respectable number of migrators from the two districts of Al-Wusabayn (Wusab Al Ali & Wusab As Safil) in addition to few numbers from other districts.

While most migrators from Ibb Governorate are from the three districts includes: Ash Sha'ir, Badan and Al Udayn and the immigration is to USA, Arabian Gulf and UK.

Al Bayda Governorate although has a respectable number of migrators from five districts includes (As Sawma'ah, Dhi Na'im, Al Bayda, Mukayras and Az Zahir). The immigration from the mentioned districts is to Saudi Arabia. Other immigration is to UK and USA from Rada' district.

Taiz as one of the Yemeni Governorate has also a respectable number of migrators but there is no particular districts for people whom immigrate abroad and the migrators are from all over the governorate. The immigration is mainly to Saudi Arabia.

During August, nothing changed in terms of exchange shops operation and services.

The flow up of remittances in August, 22 was normal in the whole Governorates but has not backed to pre-COVID 19 level.

However, **Cash Consortium of Yemen (CCY) - Remittances Tracker** – mentioned that:

- Abyan (Khanfar) and Taizz (Al-Khukha) have the largest number of shops that indicated an increase in the percentage of inflowing remittances.
- Taizz (Al Mawasit & Al Makha) have the largest number of shops that indicate the percentage of remittances inflows has decreased.

The remittances considered one of the main sources of incomes for the people in the mentioned governorates during August, 22 and created a good environment for people satiability and stability in their area and reduced the gap of food consumption.

**Trends:**

- The new rules imposed to reduce the number of Yemeni workers in Saudi Arabia would likely impact around a hundred thousands of Yemenis in case of full implementation across the country
- Income from foreign remittances is expected to remain below pre-COVID levels

**Overall Statement:** there was no change in the remittances situation from previous months and the remittances still contributing significantly to the satiability and stability of community in the whole Governorates and reduced the suffering of people and prevented community from sliding into more food insecurity situation.

requested to reduce the number of workers from all nationality includes Yemen as well the imposing of extra money for residency.

**Overall Statement:** the remittances stayed one of the main incomes for people but it is expected to some extent to be decreased due to the new regulation at Saudi Arabia and the expectation of new waves of COVID 19.

<p><b>Nutrition and Health</b></p>	<p><b>Trends (specify):</b> Data received about malnutrition by GFU, MoPHP in Ibb hub, Shows, cases were recorded of malnutrition among pregnant and lactation women in August 2022 year.</p> <table border="1" data-bbox="522 326 1394 516"> <thead> <tr> <th></th> <th>August</th> <th>Taizz</th> <th>Ibb</th> <th>Al bayda</th> <th>Dhamar</th> </tr> </thead> <tbody> <tr> <td rowspan="2"><b>SAM</b></td> <td>Cases No</td> <td>2178</td> <td>1632</td> <td>521</td> <td>1400</td> </tr> <tr> <td>Last month %</td> <td></td> <td>7%</td> <td>0</td> <td>-12%</td> </tr> <tr> <td rowspan="2"><b>MAM</b></td> <td>Cases No</td> <td>4839</td> <td>3358</td> <td>2105</td> <td>3367</td> </tr> <tr> <td>Last month %</td> <td></td> <td>1%</td> <td>13%</td> <td>2%</td> </tr> </tbody> </table> <p>In addition, the continued presence of diseases in different areas from time to time, such as cholera, dengue fever, malaria, upper and lower respiratory infection, mumps, typhoid, diphtheria, pandemic influenza, whooping cough, acute flaccid paralysis, measles, meningitis and leishmaniosis.</p> <p><b>Impact on livelihoods (specify):</b> nutrition-focused on livelihoods can impact child nutrition, household income, agriculture production, and assets.</p> <p><b>Overall Statement:</b> treatment cases of malnutrition in Ibb hub among children below 5 years in terms of SAM and MAM cases as shows in the above table, with many cases of malnutrition among vulnerable groups in Ibb hub since early 2022. In addition, spread infectious diseases in different districts of Ibb hub.</p>		August	Taizz	Ibb	Al bayda	Dhamar	<b>SAM</b>	Cases No	2178	1632	521	1400	Last month %		7%	0	-12%	<b>MAM</b>	Cases No	4839	3358	2105	3367	Last month %		1%	13%	2%	<p><b>Likely Scenario:</b> People with moderate and severe malnutrition are vulnerable groups, namely children under five and pregnant and lactating women in remote and remote areas suffer from their inability to reach treatment and specialized centers for several reasons, the very high transportation cost, and the weak of health education in the community.</p>
	August	Taizz	Ibb	Al bayda	Dhamar																									
<b>SAM</b>	Cases No	2178	1632	521	1400																									
	Last month %		7%	0	-12%																									
<b>MAM</b>	Cases No	4839	3358	2105	3367																									
	Last month %		1%	13%	2%																									
<p><b>COVID-19</b></p>	<p>No official data obtained regarding the COVID-19 cases however, local media indicated the existing of Covid-19 in some governorate in the southern and northern governorates.</p>																													
<p><b>Natural Hazards (specify)</b></p>	<p>According to OCHA (Yemen situation update:</p> <ul style="list-style-type: none"> <li>- In Ibb Governorate, more than 360 families endured the impacts of heavy rains and flooding, including over 180 households from displacement sites and the host community in As Saddah District; some 100 households, including those from the marginalized community (Muhamasheen), in Ba'dan and Jiblah districts, and nearly 60 households in Al Mashannah and Yarim districts. Most of the families lost their shelters, food supplies, NFIs, and household items, including children's educational materials.</li> <li>- In Ta'iz Governorate, more than 1,330 households were affected with the majority in displacement sites. According to the Executive Unit for Internally Displaced People, on 29 August,</li> </ul>																													

	<p>shelters, food supplies, and household items of at least 126 households in three displacement sites in Mawza' District were damaged. Non-food items (NFIs) were noted as urgent needs. In Al Makha District, partners assessed more than 600 households in seven inundated displacement sites in need of food, shelter and NFIs. According to authorities, Ta'iziyah and Mawiyah districts were also affected, leaving over 290 displaced families in need of humanitarian assistance.</p> <ul style="list-style-type: none"> <li>- According to the monthly Agrometeorological bulletin issued by food security and early warning system FAOUN, Hazards were restricted to the existing of Tuta Absoluta which affected tomatoes crop. However, the GFUs monthly updates indicated also hazard related to livestock such as the emergence of epidemiological foci of nodular dermatitis on new cows. However, no other hazards were reported from Dhamar Governorate during the month of August, 22.</li> </ul> <p>Overall summary, Agriculture production in hub Governorate both (plant and livestock) will be continued affected by diseases as long as the pest control campaigns is very poor and the poor incomes of local people to buy it.</p>	
<p><b>Are there any outstanding unique (atypical) features affecting food security (specify)?</b></p>		

Indicators	Information sources with HTTP link
Conflict	<p>Source; ACLED, <a href="https://acleddata.com/dashboard/#/dashboard">https://acleddata.com/dashboard/#/dashboard</a></p> <p><b>Instructions on exporting ACLED data:</b> 1. From the dashboard click the 'Export data' icon on the upper right-hand side.  2. This will take you to the 'DATA EXPORT TOOL' page, click 'Register' from the top menu. Must use official email for registration.  3. After registration an Acled portal access key number will be sent, store the number. For exporting data from the ACLED website this key number is essential.  4. Go to the 'DATA EXPORT TOOL' page, (see instruction above), in the bottom of the page fill in the form including the key #, click export. The data will be exported in CVS file save in Excel.</p>
MFB price	<p><a href="#">Market Information &amp; Early Warning Dashboard</a>.</p>

Exchange rate	<a href="#">Market Information &amp; Early Warning Dashboard.</a>
Fuel	<a href="#">Market Information &amp; Early Warning Dashboard.</a> <a href="https://www.globalpetrolprices.com/">https://www.globalpetrolprices.com/</a>
Humanitarian Food Assistance (HFA), FSAC	<ul style="list-style-type: none"> <li>- Emergency Food Assistance Need and Gap Analysis Interactive Map by months available in: <a href="https://fscluster.org/yemen/documents">https://fscluster.org/yemen/documents</a></li> <li>- The monthly HFA by governorates and districts has to be directly collected from FSAC.</li> </ul>
COVID-19 cases & deaths, WHO	<a href="#">Yemen: WHO Coronavirus Disease (COVID-19) Dashboard With Vaccination Data   WHO Coronavirus (COVID-19) Dashboard With Vaccination Data</a>