



Food and Agriculture Organization  
of the United Nations

# Flood Impact on Crops and Livestock in South Sudan (2021)

**FSL Cluster Meeting - 26 January 2022**

---

**Nicholas Kerandi**

*Technical Advisor – Food Security / FAO South Sudan*



## Key Highlights

- **835 000 people** affected by flooding across the country (*Source: UNOCHA*)
- **8 out of 10 states affected** (*Only Eastern and Western Equatoria remained unaffected*).
- **33 out of 78 counties affected** (*42% of counties*).
- **Jonglei, Unity and Upper Nile** states are the **worst hit** in terms of people affected (*in that order*).
- **Crop production losses highest** in **Warrap, Northern Bahr el Ghazal (NBeG) and Jonglei** states.
- An estimated **65 107 hectares of land** planted with cereals were damaged, leading to losses of about **37 624 tonnes of grain** in the flood-affected areas.
- An estimated **795 558 livestock** perished due to flooding in 2021 in eight states.
- Jonglei experienced heavy flooding in 2019 and 2020, especially in **Twic East** and some **parts of Bor South**, the **floodwaters never receded** and therefore minimal agricultural activities took place during the current season.



## Methodology

- Rapid assessments conducted between 20<sup>th</sup> and 30<sup>th</sup> October 2021.
- Assessment teams comprised personnel from FAO, Ministry of Agriculture and Food Security (MAFS) and State Ministries of Agriculture (MoAs).
- The team includes trained Agricultural Task Force members, County Crop Monitoring Committees (CCMCs), livestock data collectors and FAO's Agricultural Extension Assistants.

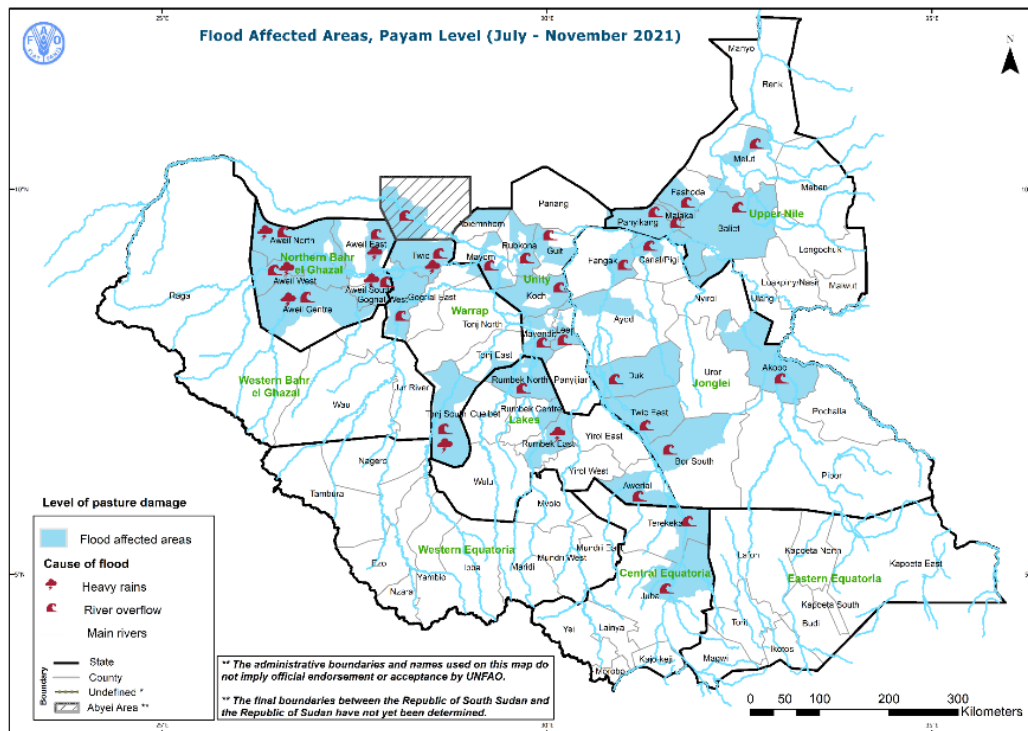


## Sources of flood waters and time of occurrence

State	Source of flood water	Time of flooding (June – Nov 2021)
Jonglei	Overflow of Nile, Sobat, Akobo, Khorflus, Ater and Nyading rivers	August - October 2021
Warrap	1st flooding by heavy rainfall	Mid-April 2021
	2nd flooding overflow of rivers	September 2021
Northern Bahr el Ghazal	Rainfall and overflow of rivers	July - August 2021
Central Equatoria	Overflow of River Nile and excess rainfall	Third week of September 2021
Unity	Overflow of River Nile	<ul style="list-style-type: none"><li>• June - September 2021</li><li>• October - November 2021</li></ul>
Upper Nile	Overflow of river Nile	October 2021
Lakes	Overflow of Nile and Gel Rivers; excess rains	<ul style="list-style-type: none"><li>• Mid-August - November 2021</li><li>• Mid-September - October 2021</li></ul>



### Map of flood affected areas (July to November 2021)



Based on the assessments conducted by FAO and partners, all the states, except Western Bahr el Ghazal, Western Equatoria and Eastern Equatoria were affected by floods between July and November 2021, leading to losses in crop and livestock production.



## Estimated cereal losses (by State)

NAME OF STATE <i>and (# of Counties)</i>	Cereal area damaged ( <i>ha</i> )	Estimated cereal production loss in 2021 ( <i>tons</i> )
Lakes (3)	1 133	637
Upper Nile (5)	1 493	506
Northern Bahr el Ghazal (5)	17 691	7 764
Warrap (4)	28 491	21 126
Central Equatoria (2)	1 620	773
Jonglei (8)	14 513	6 681
Unity (6)	236	137
Eastern Equatoria		
<b>Grand Total</b>	<b>65 177</b>	<b>37 624</b>

Warrap had the highest cereal production loss that was estimated at 21 126 tonnes, followed by Northern Bahr el Ghazal's 7 764 tonnes, and Jonglei with 6 681 tonnes of cereal loss.



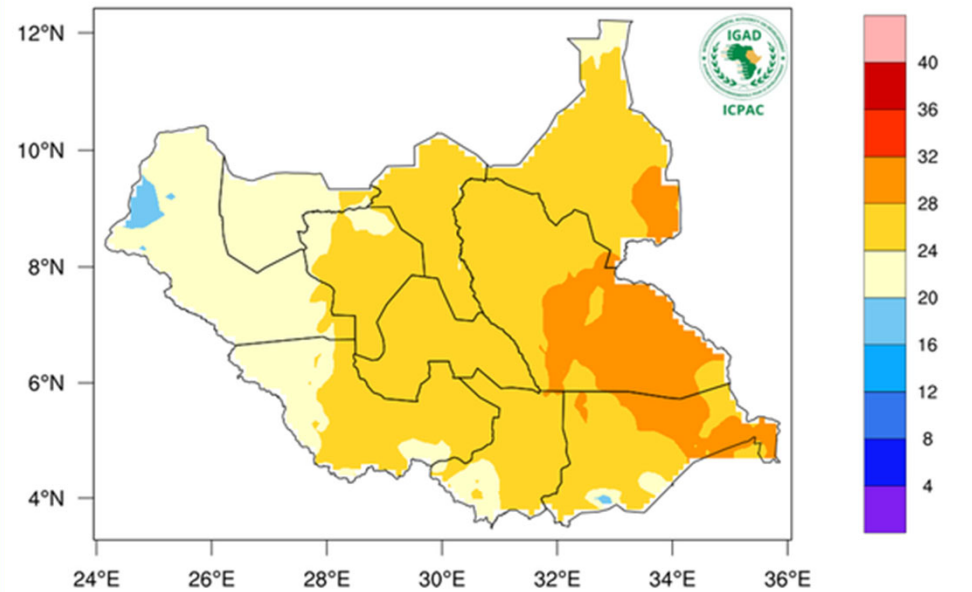
## Flood impact on livestock (by State)

States	No. of Counties affected	Total livestock (cattle, goats, sheep) affected	Total livestock (cattle, goats, sheep) death	% livestock death to affected
Jonglei	8	2,354,850	251,325	10.67%
NBEG	5	846,130	12,789	1.51%
Lakes	5	740,668	7,431	1.00%
Warrap	6	1,689,564	25,368	1.50%
Upper Nil	6	1,893,408	143,210	7.56%
Unity	7	2,589,634	354,725	13.70%
WBEB	3	33,460	356	1.06%
EES	5	27,823	354	1.27%
<b>Total</b>	<b>45</b>	<b>10,175,537</b>	<b>795,558</b>	<b>7.82%</b>



Food and Agriculture Organization  
of the United Nations

# South Sudan Weekly and Seasonal Weather Forecast

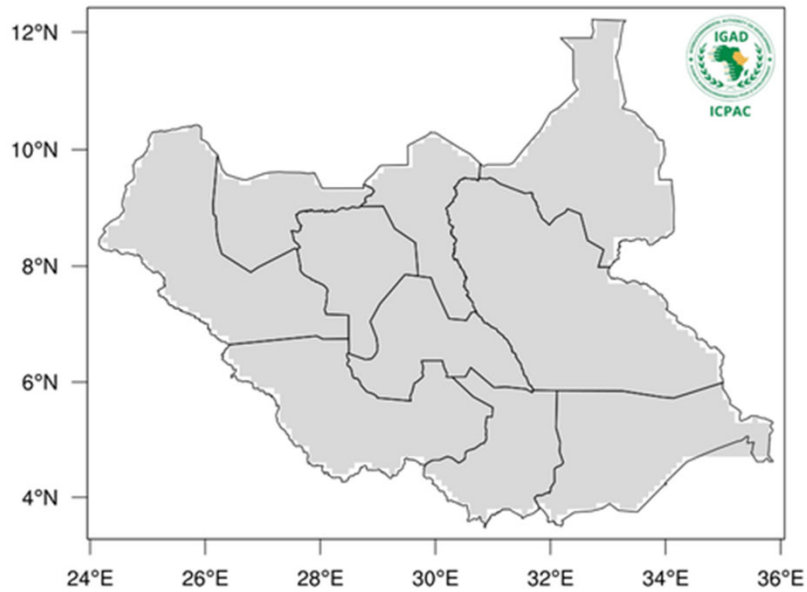




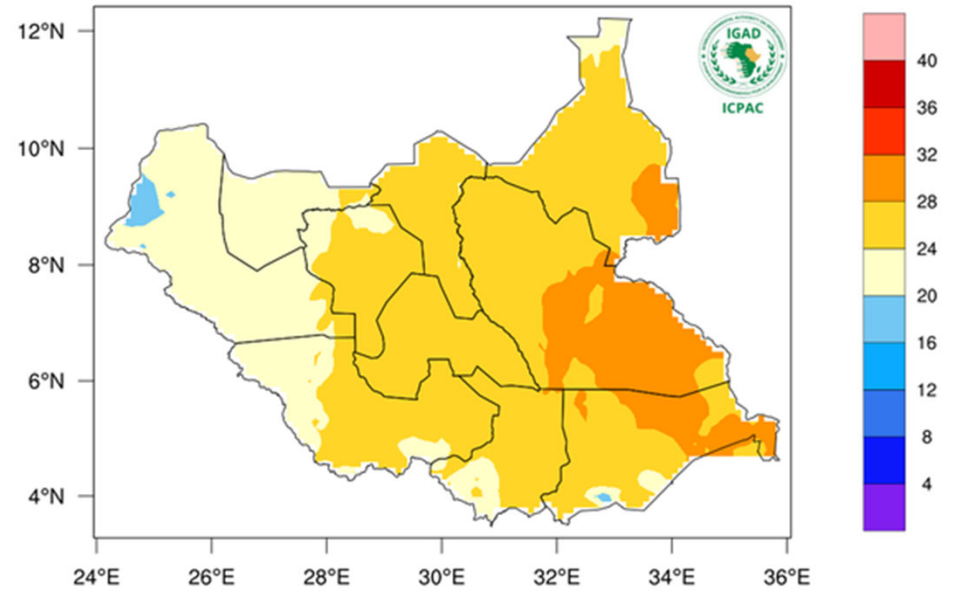


## Weekly Weather Forecast

Total Rainfall (mm) for 25 Jan-01 Feb 2022



Mean Temperature (C) for 25 Jan-01 Feb 2022

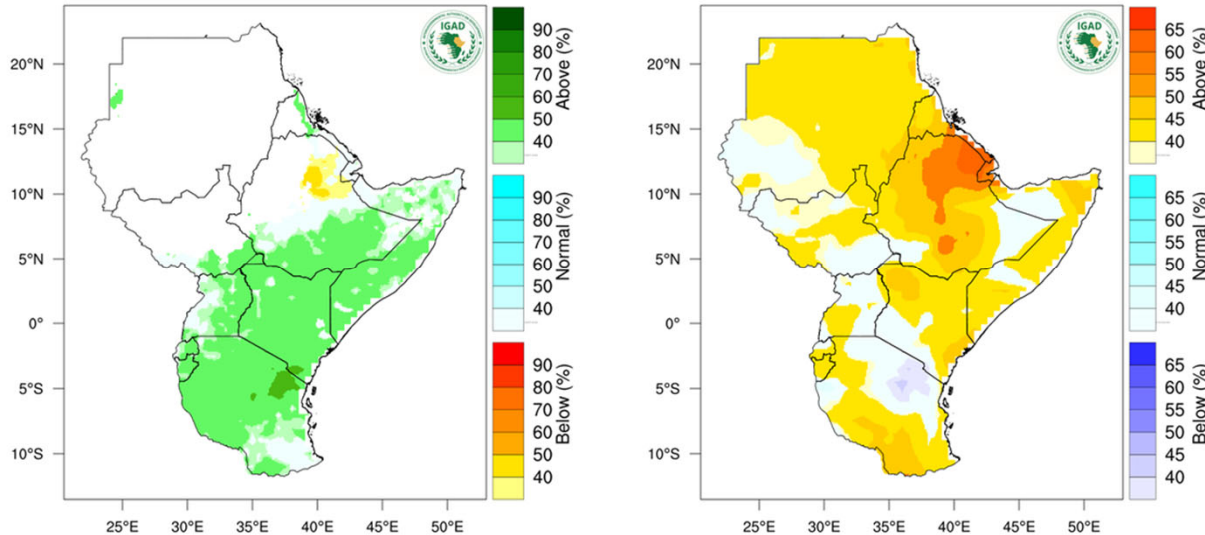


Dry conditions expected in South Sudan, with moderate temperatures of between 20-32 °C (Source: ICPAC)



## Seasonal weather forecast (February – April 2022)

Rainfall Probabilistic Forecast for Feb-Apr 2022



Wetter than usual conditions expected over much of the region; in South Sudan, these are expected in the southeastern parts of the country (i.e., Kapoeta East, southern parts of CES etc.). Normal rainy conditions are expected over the rest of the country.

Warmer than usual conditions expected over central South Sudan, with usual temperature conditions expected in southern and north-western South Sudan.

Regionally, most of Kenya, Tanzania, eastern Uganda and the southern half of Somalia are likely to experience wetter than usual conditions between February and April 2022.



Food and Agriculture Organization  
of the United Nations

# Thank you