

# Tigray, Ethiopia: Partners Response Dashboard

January-June 2023

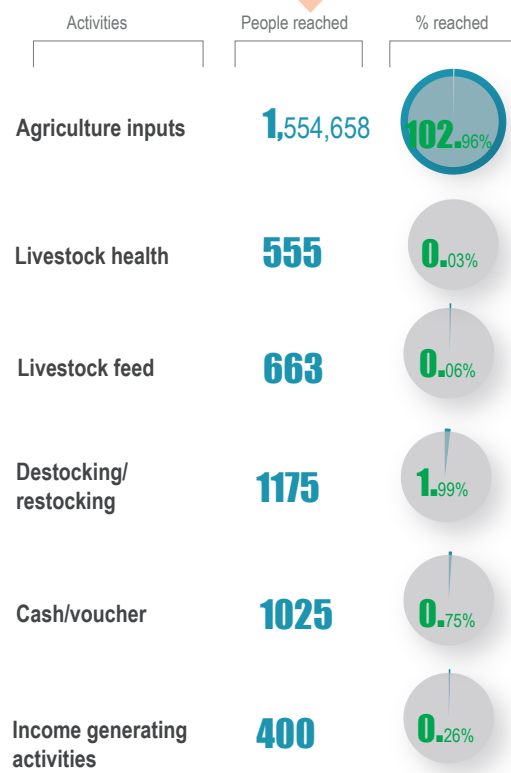


The drought continues to compromise fragile livelihoods heavily reliant on livestock and causing a worsening food security and malnutrition while eroding coping strategies for the most vulnerable. The drought is impacting severely on farming and pastoralist communities/livelihoods through livestock deaths, loss of income, reduction of milk, and crop failure. Over **6.8 million** livestock are estimated\* to have died due to lack of pasture and water in Oromia, SNNP and Somali regions. Livestock market value has also significantly dropped, as animals are not marketable, impacting families' income sources. The Agriculture cluster is estimating that approximately **7.2 million** individuals have been affected by the current drought and need agricultural support, this number may increase in the coming period if the expected rains [March - April] perform poorly. **985K** out of the 1.1 million households targeted have been reached with agriculture support interventions. The cluster needs **133 million USD** to respond to the drought till December 2022 (the plan is under revision). Currently the cluster has confirmed **63 million USD (47%)**, the funding gap is **70 million USD**.

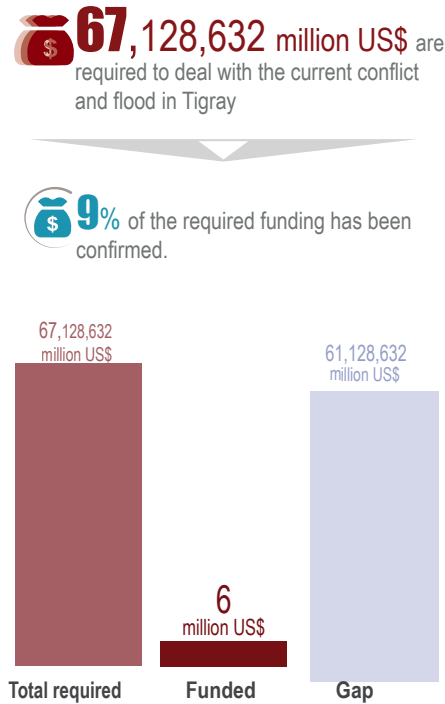
\*Source: Regional DRM ATF

**People Reached: 1,555,876**

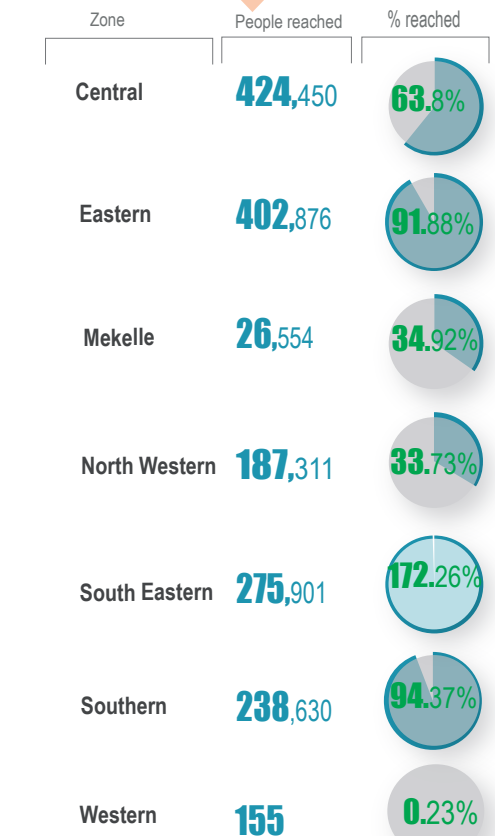
## People Reached by Activities



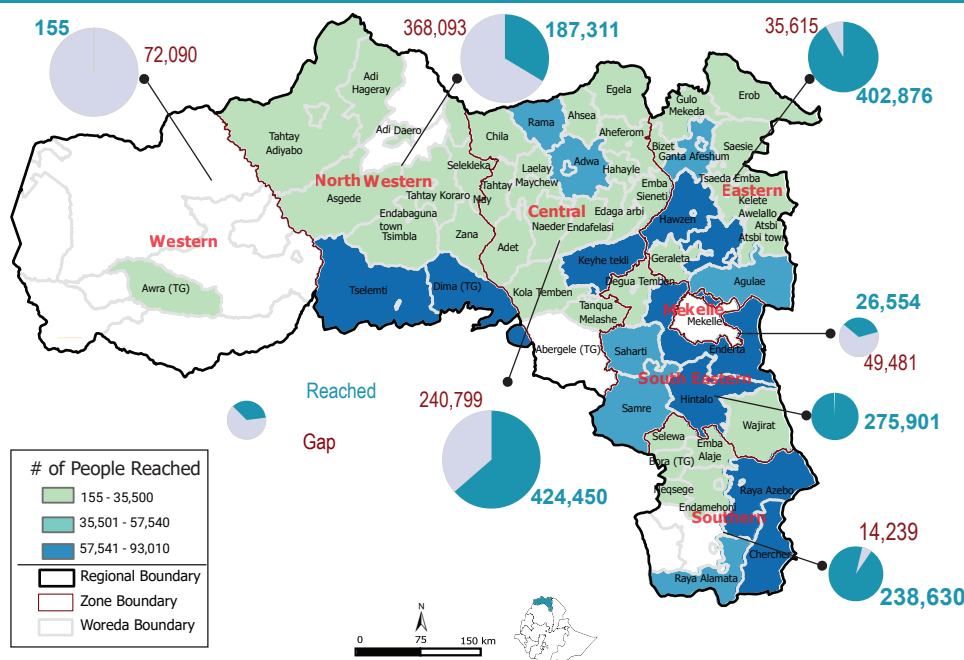
## Total Funding Required



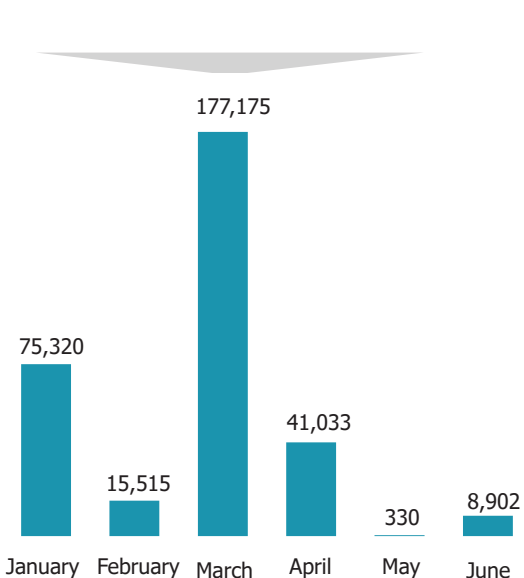
## People Reached by Zone



## People Reached by Woreda



## Households Reached by Month



The boundaries and names shown and the designations used on this map do not imply official endorsement or acceptance by the United Nations or iMMAP

Data sources: UNOCHA/Agriculture Cluster 5W January - June 2023 partners' report.

<https://fscluster.org/ethiopiaagric>

Contacts: [ntandoyenkosi.mobane@fao.org](mailto:ntandoyenkosi.mobane@fao.org)

This IM support is provided by iMMAP-HIST team  
For IM support contact via <http://hist.immap.org>  
Contact address: [hist@immap.org](mailto:hist@immap.org)