



World Food Programme

ESSENTIAL NEEDS ASSESSMENT (ENA) PLANNING MEETING RAM

August 2023

© WFP/Matteo Cosorich

SAVING
LIVES
CHANGING
LIVES



Contents of the Presentation



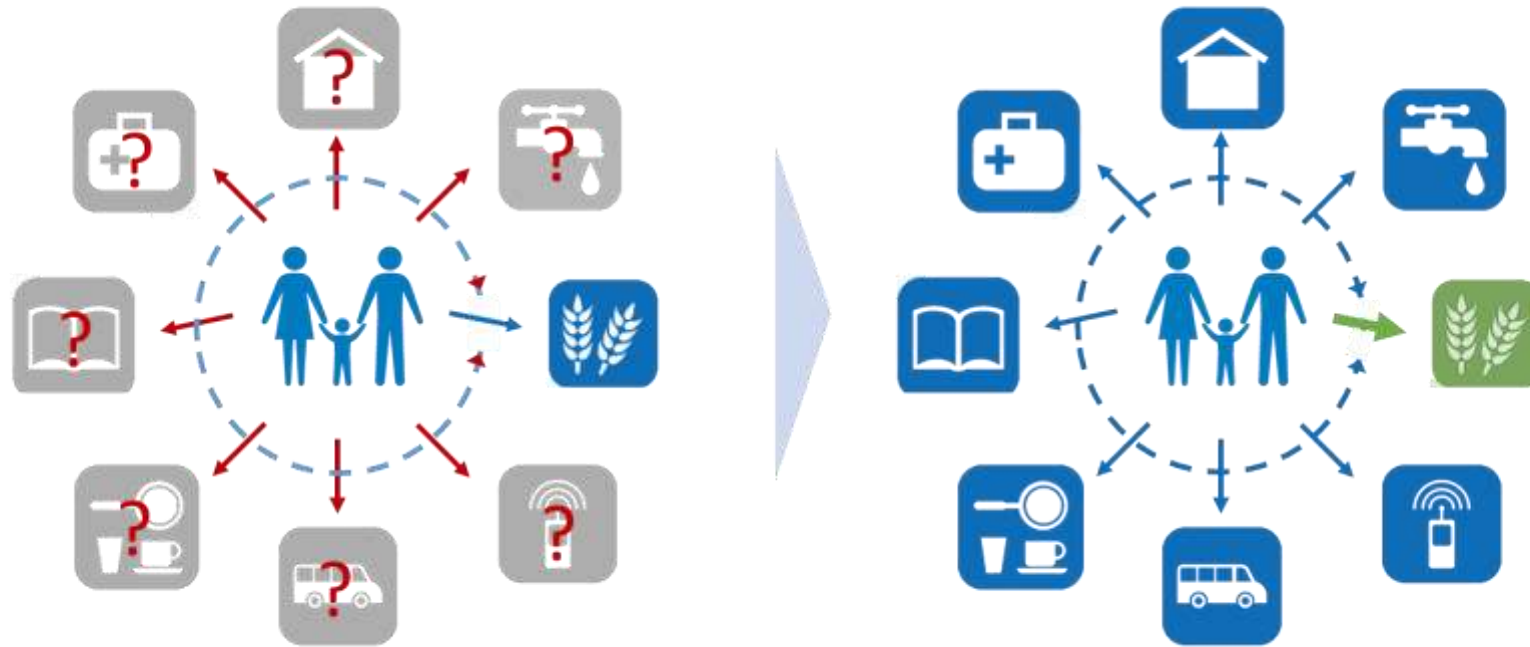
© WFP/Arete/Adetona Omokanye

- ✓ Background
- ✓ Overview of ENA September 2023
 - ✓ Methodology
 - ✓ Coverage
 - ✓ Sampling
 - ✓ Timeline

Background & Justification

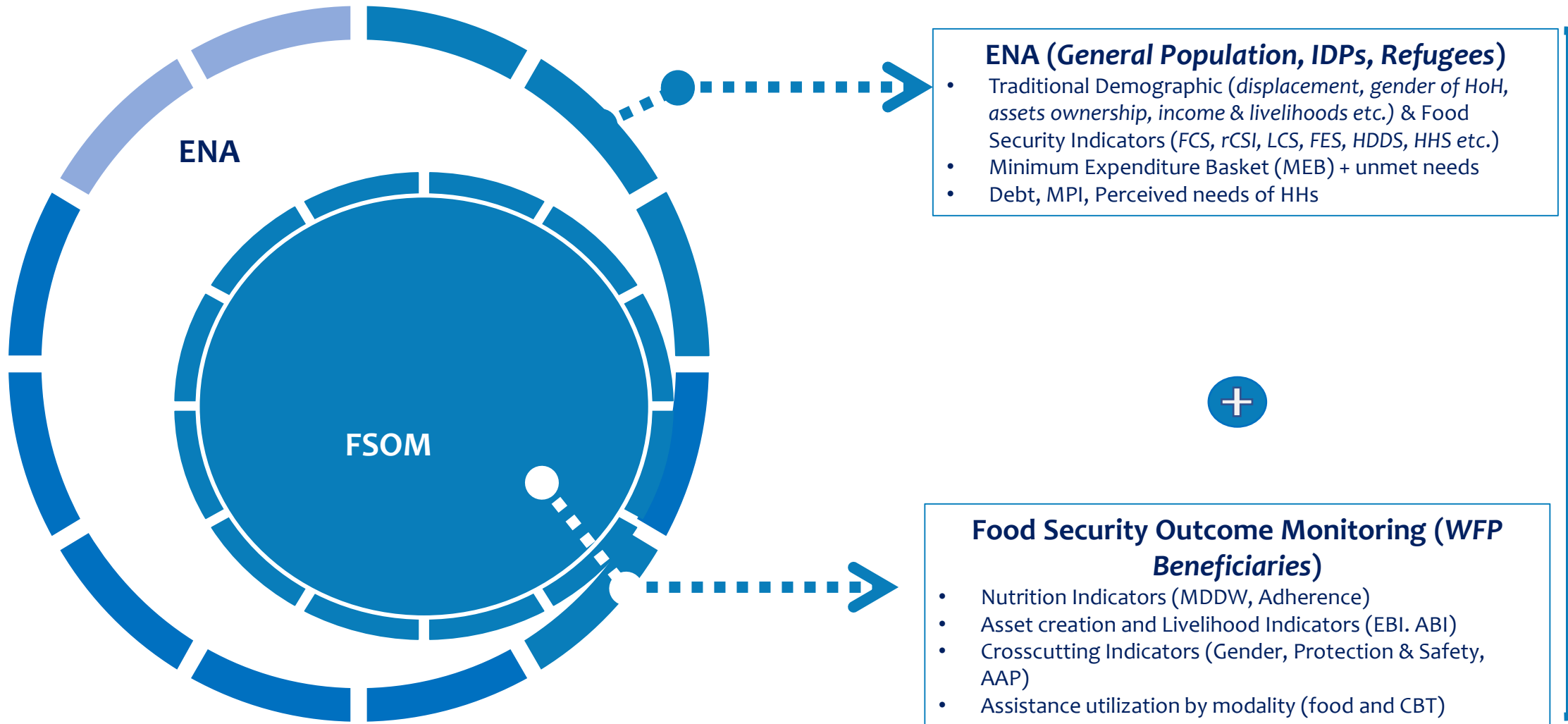
- The persistent insecurity in the north-eastern states of Borno, Adamawa, and Yobe (BAY), the rising banditry in other northern States (Zamfara, Sokoto, and Katsina), the naira redesign policy, removal of fuel subsidy and the soaring prices of staple foods and basic commodities have further reduced households' access to food and necessitates continued monitoring of the food security situation;
- The conflict in these areas continues to stifle food security due to displacement, and sub-optimal or completely restricted access to livelihoods. Hence, the need for continued generation of essential needs, food security, and baseline data in affected states is necessary.
- Joint planning for October 2023 and February 2024 ENA to optimize the effectiveness of planning efforts.

Essential Needs include the rights of crisis-affected persons to food, water, hygiene, shelter, medical care, and education.



- **Needs** are interlinked
- **Needs** to compete for household resources
- **Needs** of individuals vary in different stages of their lives
- **Needs**, or gaps thereof, are addressed by multiple actors

Methodology



Oct 2023

**Cadre Harmonise
Analysis**

HNO/HRP

**WFP/FSS
Partners/Govt.
Programme Planning**

**WFP's Beneficiary
Monitoring & Donor
Reporting**

Methodology

Host Communities



IDPs
(Camps & Host Communities)



Returnees



Refugees



- Cross Sectional Design
- 2 Stage Cluster Design (1st Stage – EA/IDP site selection & 2nd Stage – HH selection)
- LGA level sampling in northeast & LGA + senatorial zone level sampling in other areas

ENA

- Cross Sectional Design
- 2 Stage Cluster Design (1st Stage – Distribution site clusters & 2nd Stage – HH selection)
- LGA level sampling

FSOM

Concurrent Data Collection by trained enumerators from Government (NBS, NPoPC & NPFS) & FSS partners

FSOM - (SO 1) General Distribution (GD, Activity 1) + ENA

•BAY - WFP beneficiaries, Sokoto

FSOM - (SO 3) (Activity 4) + ENA

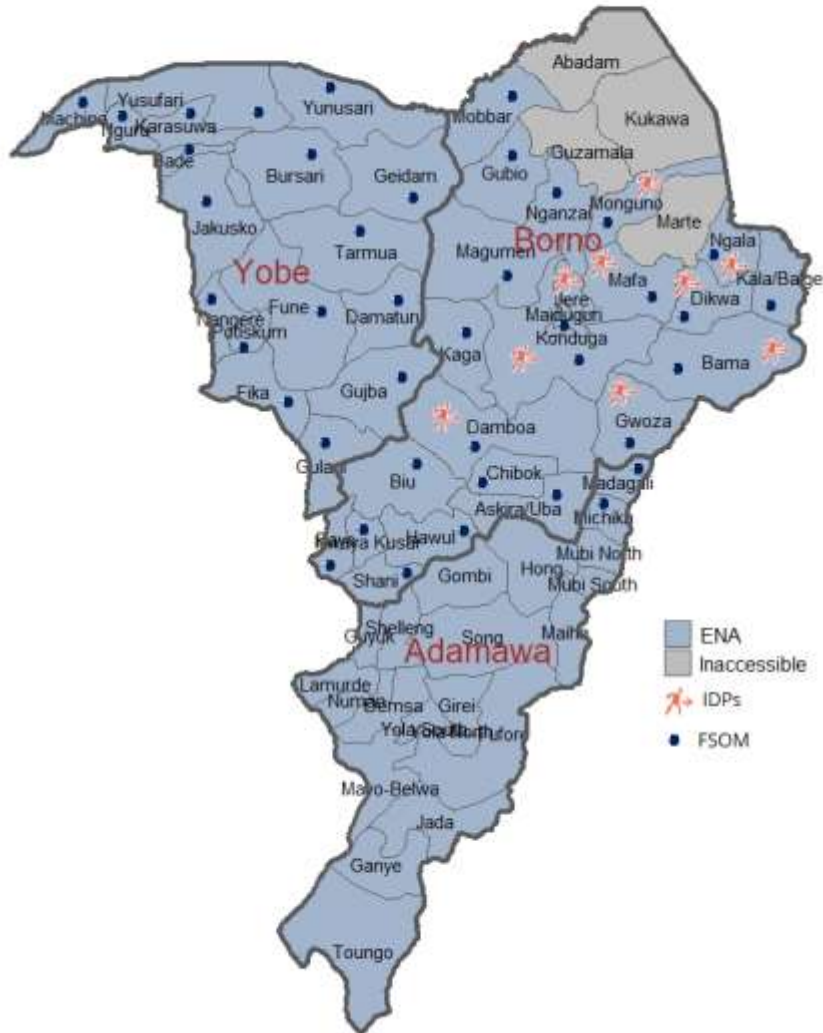
•BAY - WFP beneficiaries;

ENA

•NW (Zamfara, Sokoto and Katsina)
BAY- General Population, IDPs, Returnees

Coverage

Nigeria
NE Essential Needs Assessment and Outcome Monitoring
September 2023

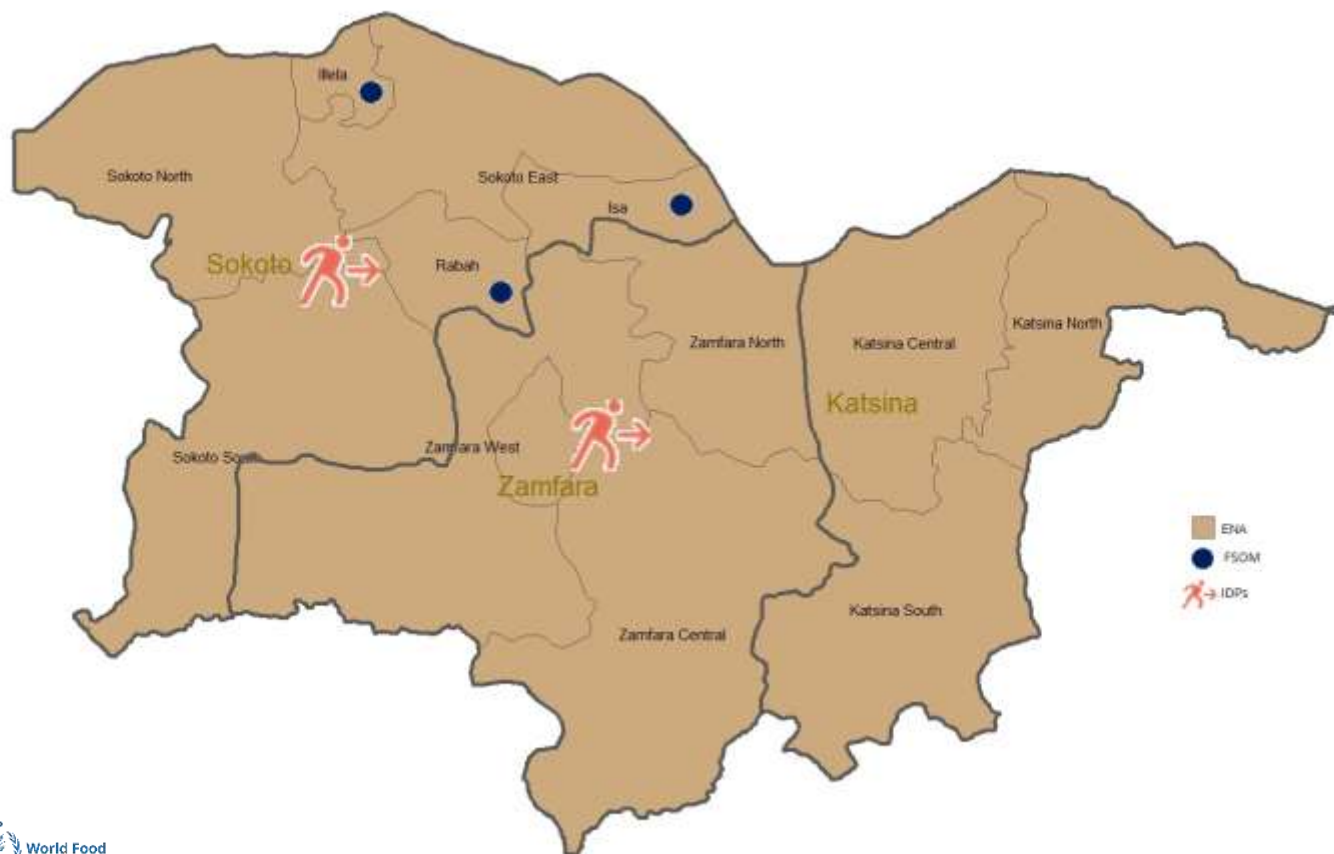


Northeast (Borno, Adamawa and Yobe States):

- **IDP-specific sampling for BAY states:** Ten selected LGAs (Jere, Konduga, Mafa, Maiduguri, Monguno, Bama, Gwoza, Dikwa, Damboa and Ngala) are the locations to collect IDP data in Borno State.
- **FSOM:** WFP's strategic outcome (SO) 1 and 3 beneficiaries in its operational areas.
- The assessment would use a status-based **three sampling strata:**
 - Internally Displaced Persons (IDPs),
 - WFP Beneficiaries (for the FSOM) and,
 - Host community members

Coverage Con't

Nigeria
NW Essential Needs Assessment
September 2023



Northwest (Katsina, Sokoto, Zamfara) states:

- For the purpose of the ENA in the northwest, data will be collected at the senatorial zone level for the general population.
- The assessment would use a status-based **three sampling strata:**
 - Internally Displaced Persons (IDPs),
 - WFP Beneficiaries (for the FSOM) and,
 - Host community members

ENA/FSOM Sample for BAY and NW states

Table 1: Sample per Northwest and Northeast state

States	Strata/Senatorial Zones & IDPs	Number of LGAs/domains/senatorial zones	Sample Size Per State
Northeast	Borno	23	9,540
	Yobe	17	4,460
	Adamawa	21	2,900
	Sub-Total	61	16,900
Northwest	Sokoto	6	1350
	Katsina	3	900
	Zamfara	6	1200
	Sub-Total	15	3,450
Total		76	20,350

Table 2: ENA/FSOM breakdown for BAY states

State	ENA	FSOM-WFP		Borno Specific Sample	Total Sample (ENA+ SO1+SO3)
		SO1	SO3	IDP	
BORNO	5,620	1,660	160	2,100	9,540
YOBE	3,250	1,130	80	-	4,460
ADAMAWA	2,750	150	-	-	2,900
TOTAL	11,620	2,940	240	2,100	16,900

Assessment Timeline

ID	Activity	Timeline
October 2023		
1	ENA Training of Trainers/Technical Discussion	Thursday, 31 st August 2023
2	ENA State Level Training	Monday 11 th to Friday 15 th September 2023 (5 days)
3	ENA Field Work	Sunday 17 th September to Tuesday 9 th October 2023 (22 days)
4	Cadre Harmonise Analysis – State Level and National Consolidation Workshops	Friday 20 th to Friday 27 th October 2023 Monday 30 th October to Saturday 3 rd November 2023.

WE ARE

**SAVING
LIVES
CHANGING
LIVES**

August 2023

