

Date: 11 February 2021

AFFECTED BY FLOOD

| IDPs | | SITES | | GOVERNORATES | SDs |
|--------|-------|-------|-----|--------------|-----|
| 141.7K | 50.8K | 408 | 96 | ALEPPO | 9 |
| | 90.9K | | 312 | IDLIB | 13 |

RESPONSE*

| # OF PARTNERS** | FOOD DISTRIBUTION | |
|-----------------|------------------------------|-------|
| 1 | FOOD BASKETS | 1.8K |
| — | COOKED MEALS | 0K |
| 4 | READY TO EAT RATIONS (RTERs) | 19.8K |
| 2 | MULTIPURPOSE CASH | 18.1K |

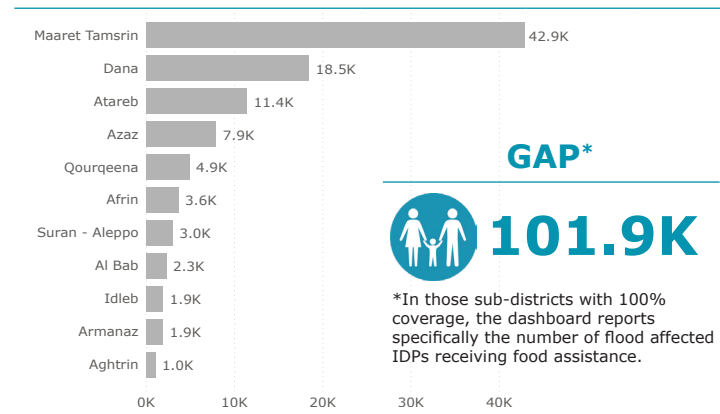
*In the last 7 days.

**FSL partners may deliver food assistance through multiple response modalities.

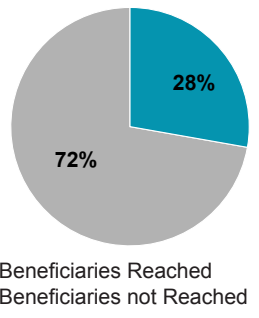
TOTAL # OF BENEFICIARIES REACHED



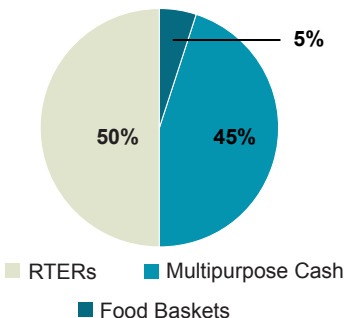
GAPS AT SUB-DISTRICT LEVEL FOR FOOD SECURITY CLUSTER FLOOD RESPONSE OPERATIONS



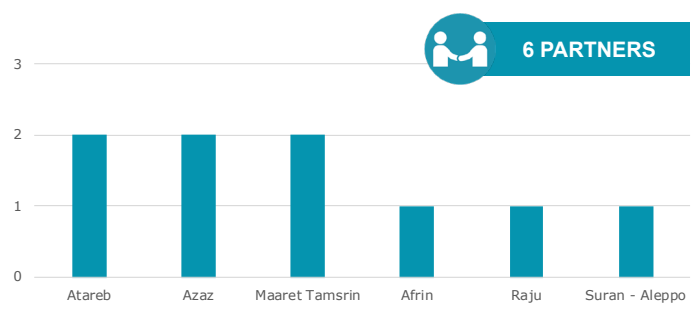
GAP ANALYSIS



RESPONSE MODALITIES



NUMBER OF PARTNERS BY SUB-DISTRICT (SD)



The boundaries and names are shown and the designations used on this map do not imply official endorsement or acceptance by the UN. Information visualized on this map is based on data collected from FSL partners and the number of IDPs Affected by Floods as of (04 Feb 2021) Source: CCCM Cluster.