

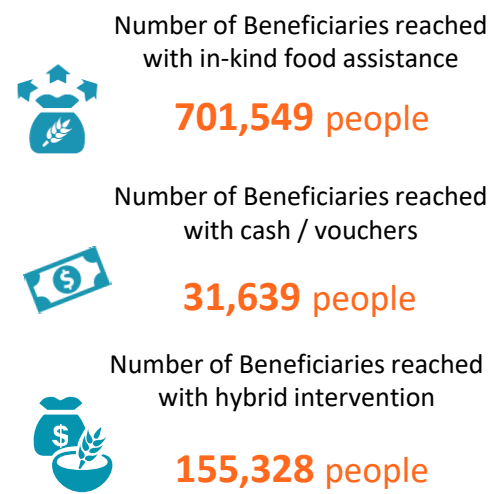
### COUNTRY RESPONSE UPDATE

In December 2020, FSL cluster partners assisted about 888,516 beneficiaries with emergency food assistance. 79% of the beneficiaries received in-kind food assistance while 4% received cash and vouchers support and 17% received hybrid intervention.

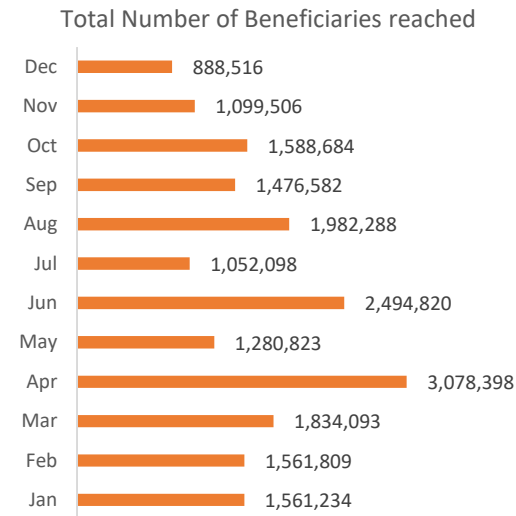
Since January, WFP and FSL partners have reached over 4.7 million unique beneficiaries with emergency food assistance. On average, 1.6 million beneficiaries are receiving support month on month from a total of 70 different partners.

In the first projection period of December 2020 to March 2021, a total of 5.8 million people (48% of the population) are estimated to face high level of food insecurity, Crisis (IPC Phase 3) or worse acute food insecurity. [Click here to download the IPC key messages.](#)

### KEY INDICATORS



### MONTHLY RESPONSE TREND



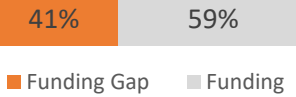
### CLUSTER OBJECTIVES

**CO1: Provide Food Assistance**

2020 ANNUAL TARGET

**4.1 Million people**  
*(includes 0.3M refugees)*

**Requirement: US\$642.4 million**



### HRP 2020 COVID-19 Addendum



**1.6 Million**

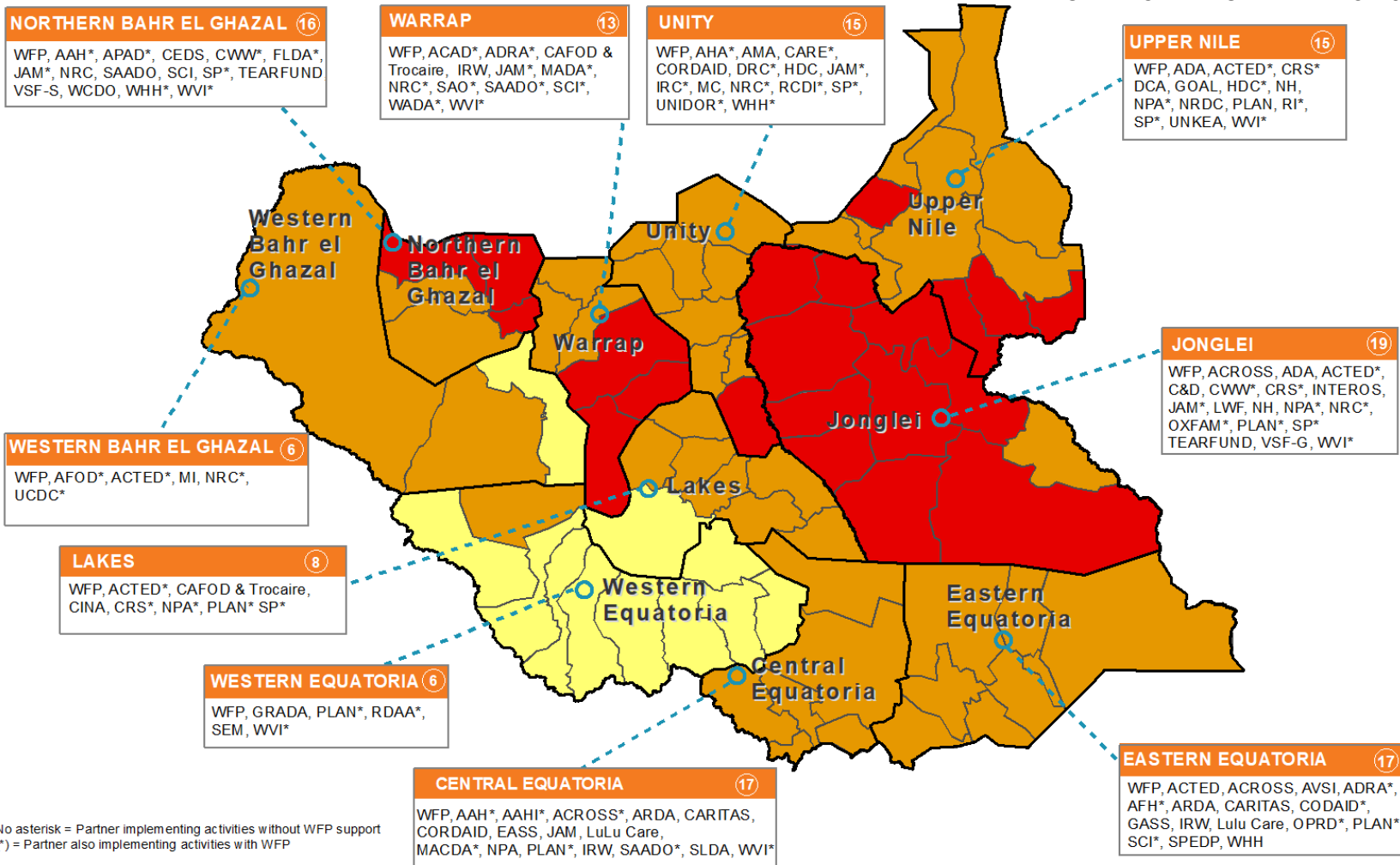
Additional targeted people affected by COVID-19 and Desert Locusts



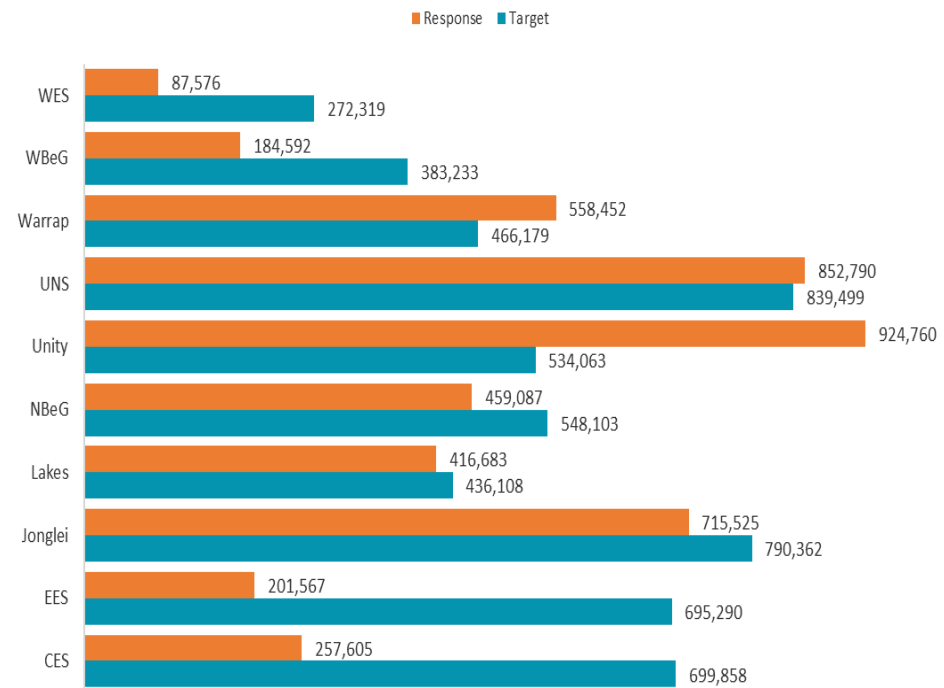
**US\$174.7**

Required  
**9% funded**

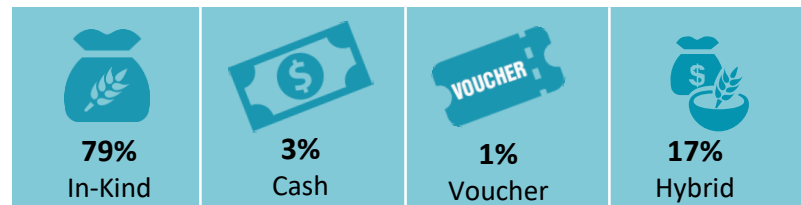
### OPERATIONAL PARTNERS REPORTING (JAN - DEC 2020) - CO1



### ANNUAL TARGET VS PARTNERS RESPONSE - CO1



### NOVEMBER RESPONSE BY MODALITY



No asterisk = Partner implementing activities without WFP support  
(\*) = Partner also implementing activities with WFP