

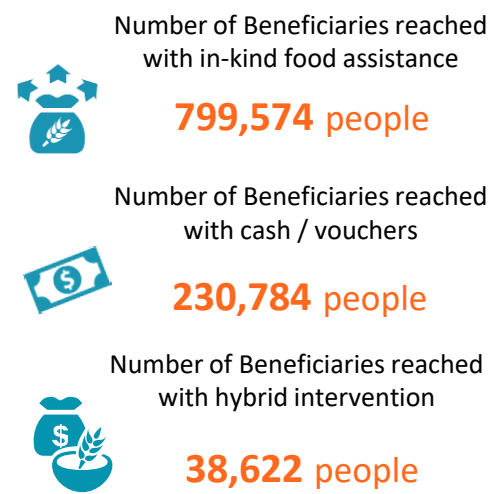
COUNTRY RESPONSE UPDATE

In July 2020, FSL cluster partners assisted over 1.1 million beneficiaries with emergency food assistance. 75% of the beneficiaries received in-kind food assistance while 21% received cash and vouchers support and 4% received hybrid intervention. The significant reduction in delivery in July was a result of double monthly ration distributions in June to mitigate COVID-19 related challenges.

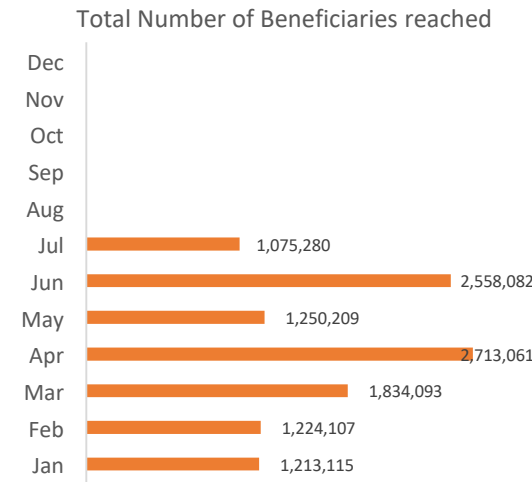
Since January, WFP and FSL partners have reached over 4.0 million unique beneficiaries with emergency food assistance. On average, 2.5 million beneficiaries are receiving support month on month from a total of 48 different partners.

In the projection period of May to July 2020, a total of 6.48 million people (55.4% of the population) will face Crisis (IPC Phase 3) or worse acute food insecurity. [Click here to download the IPC key messages.](#)

KEY INDICATORS



MONTHLY RESPONSE TREND



CLUSTER OBJECTIVES

CO1: Provide Food Assistance

Requirement: US\$645 million

2020 ANNUAL TARGET

3.8 Million people



43% **Funded**

57% **Funding Gap**



HRP 2020 COVID-19 Addendum

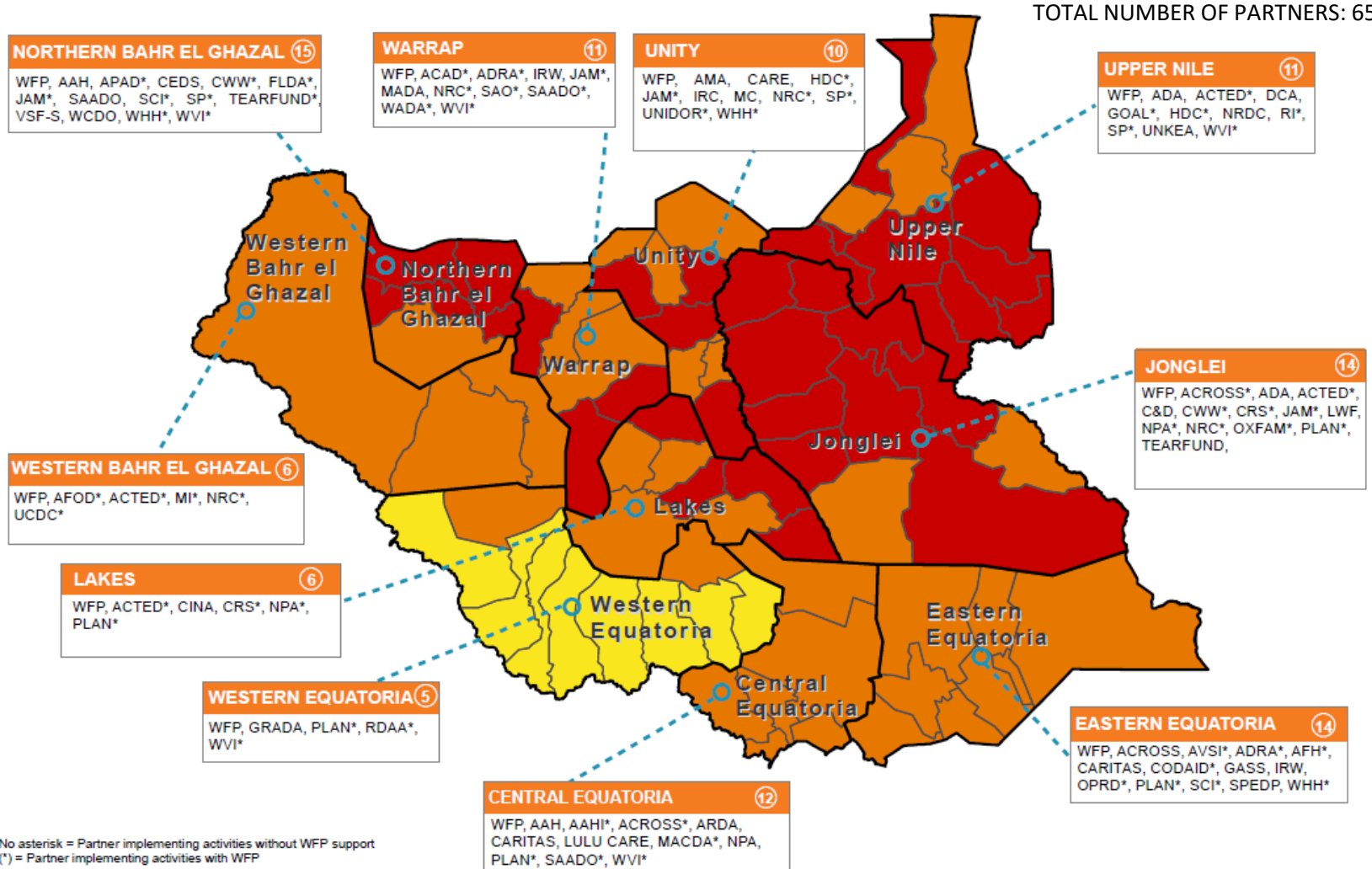


1.6 Million
Additional targeted people affected by COVID-19 and Desert Locusts

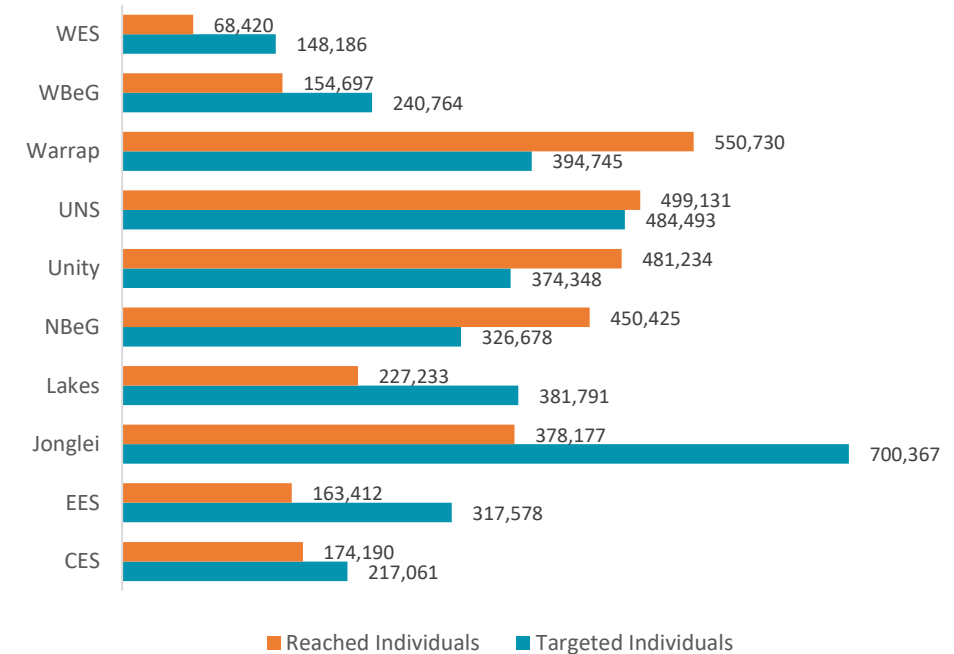


US\$179 Required
10% funded

OPERATIONAL PARTNERS REPORTING (JAN - JUL 2020) - CO1



ANNUAL TARGET VS PARTNERS RESPONSE - CO1



JULY RESPONSE BY MODALITY

