

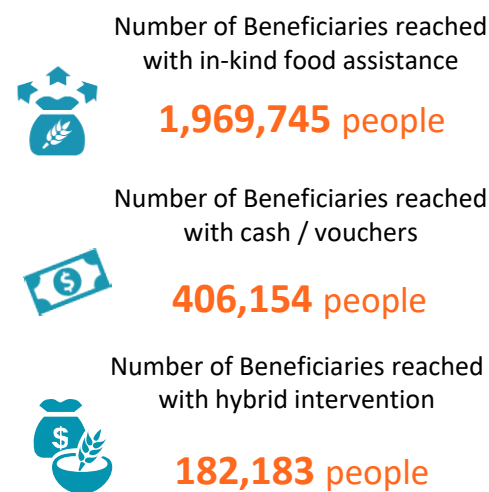
COUNTRY RESPONSE UPDATE

In June 2020, FSL cluster partners assisted over 2.6 million beneficiaries with emergency food assistance. 77% of the beneficiaries received in-kind food assistance while 16% received Cash and Vouchers support and 7% received hybrid intervention.

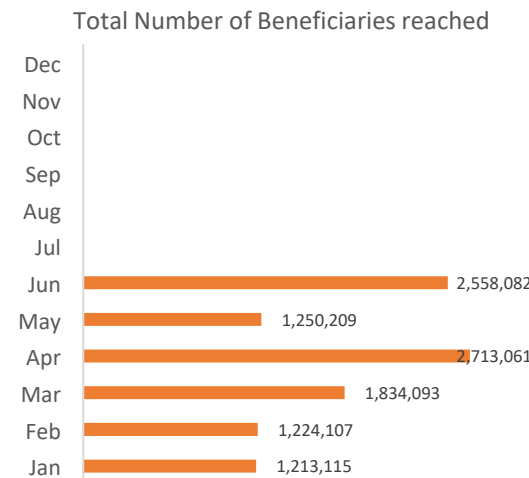
Since January, WFP and FSL partners have reached over 3.8 million unique beneficiaries with emergency food assistance. On average, 2.5 million beneficiaries are receiving support month on month from a total of 47 different partners.

In the projection period of May to July 2020, a total of 6.48 million people (55.4% of the population) will face Crisis (IPC Phase 3) or worse acute food insecurity. [Click here to download the IPC key messages.](#)

KEY INDICATORS



MONTHLY RESPONSE TREND



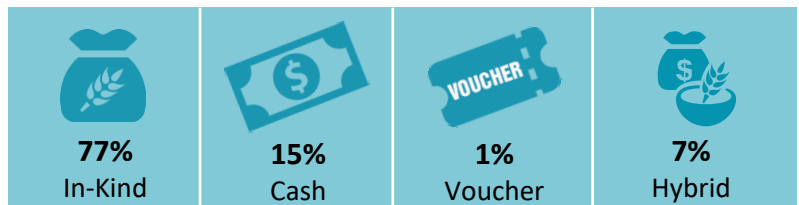
CLUSTER OBJECTIVES

CO1: Provide Food Assistance

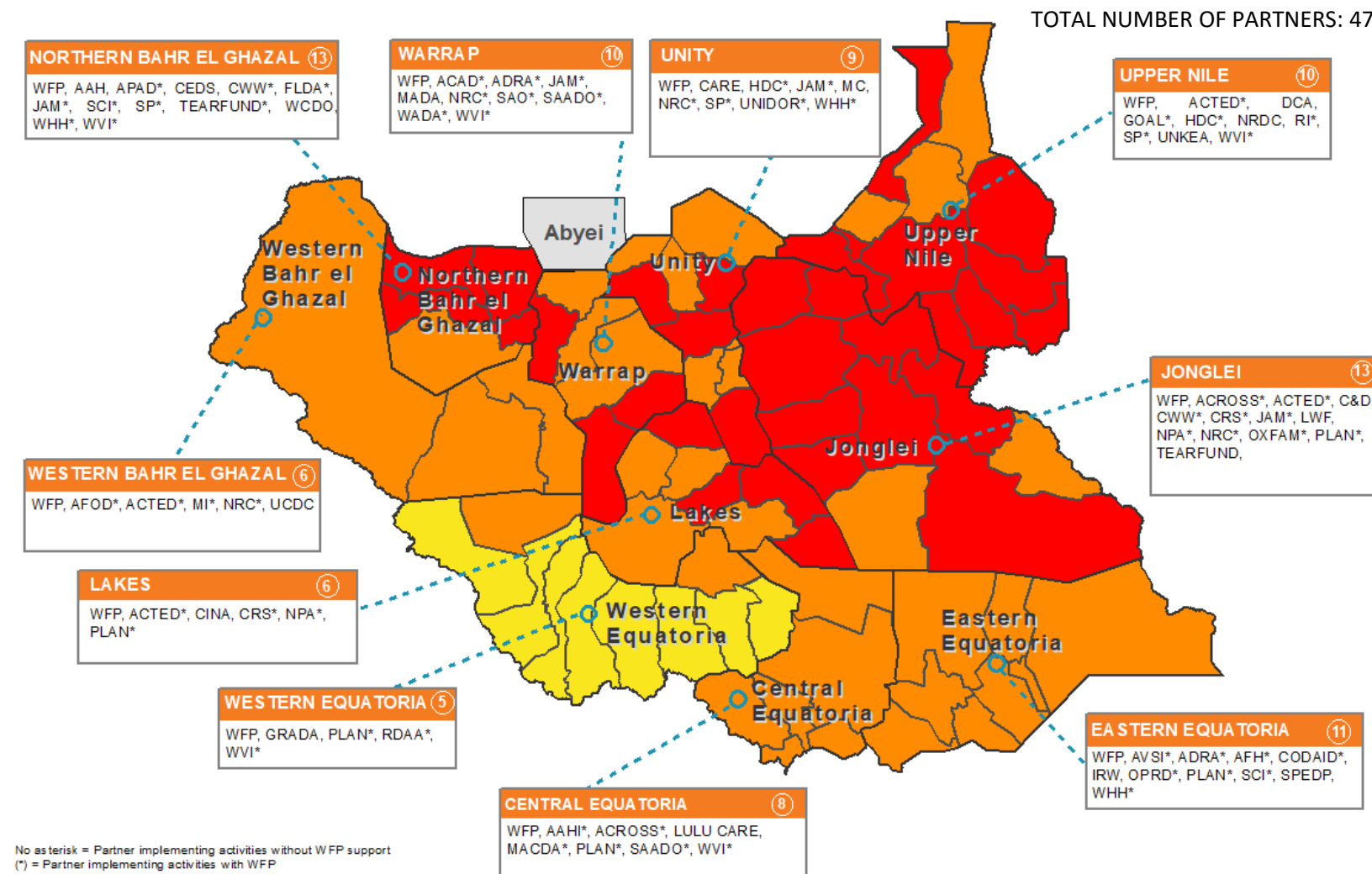
Requirement: US\$645 million



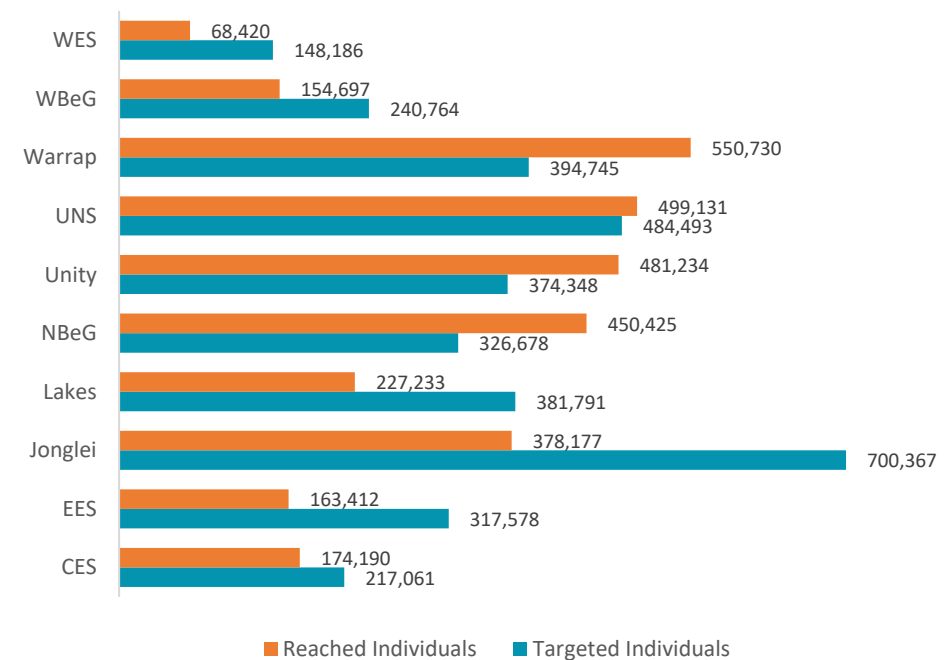
JUNE RESPONSE



OPERATIONAL PARTNERS REPORTING (JAN - JUN 2020) - CO1



ANNUAL TARGET VS PARTNERS RESPONSE - CO1



IPC Population by State (in %) : May - July projection

