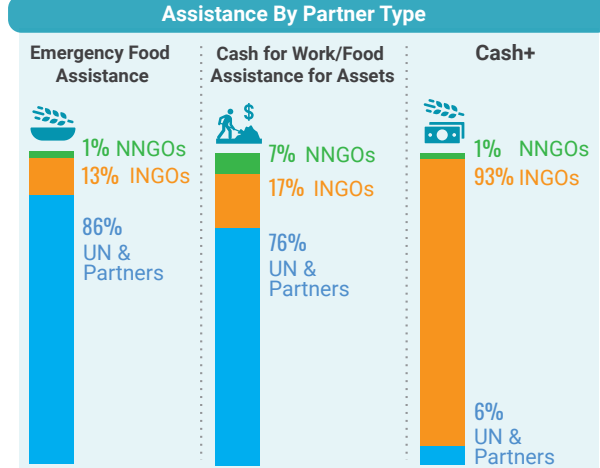
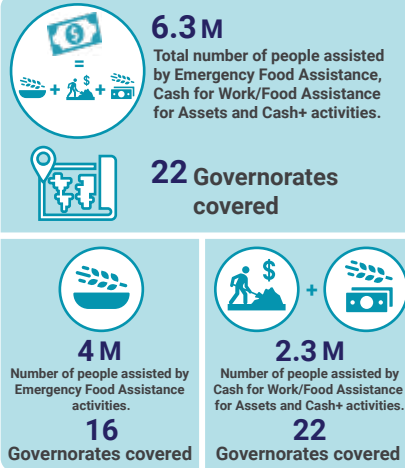


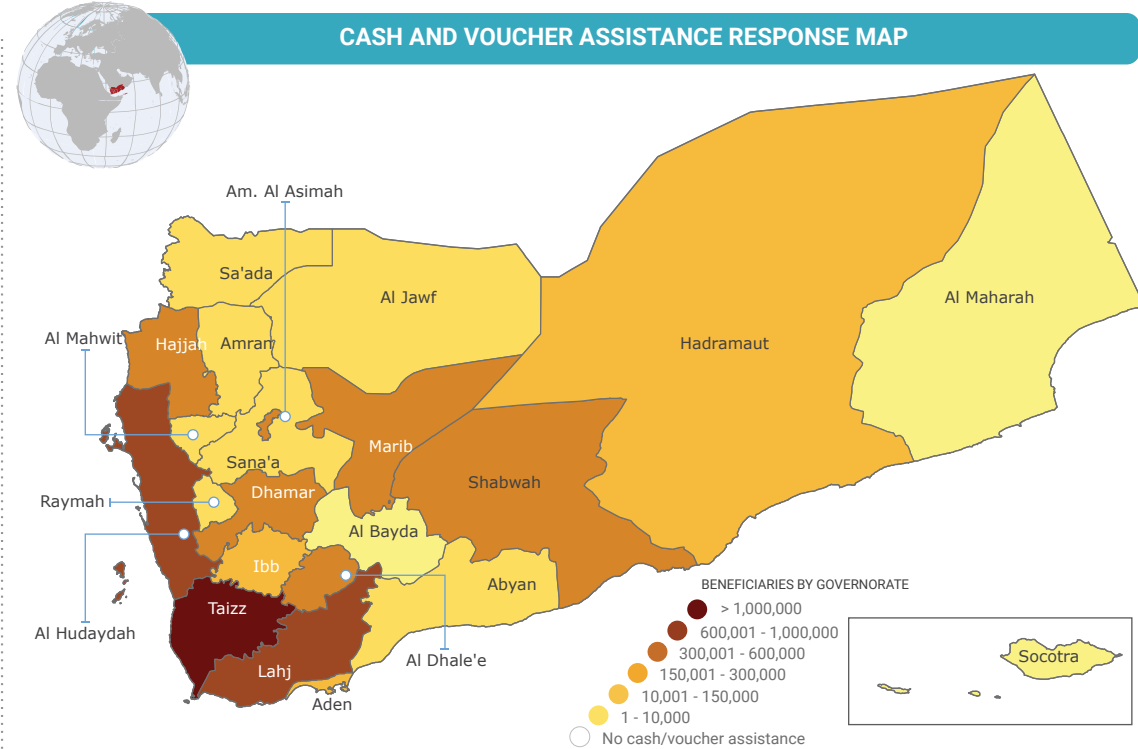
## CASH AND VOUCHER ASSISTANCE BY ACTIVITY



## CASH AND VOUCHER ASSISTANCE BY GOVERNORATE

GOVERNORATE	Emergency Food Assistance (Sep 2021)	Cash for Work/Food Assistance for Assets (Jan - Sep 2021)	Cash+ (Jan - Sep 2021)
Taizz	557,446	296,394	256,221
Al Hudaydah	689,031	202,154	9,400
Lahj	657,188	164,452	44,270
Hajjah	200,280	263,102	2,046
Dhamar	211,336	240,982	4,640
Marib	412,739	33,088	-
Shabwah	327,478	65,289	-
Amanat Al Asimah	317,544	66,262	-
Al Dhale'e	239,728	82,945	8,496
Aden	229,303	29,876	-
Hadramaut	1,613	190,419	20,042
Ibb	11,269	148,962	9,191
Sa'ada	9,318	135,708	-
Amran	7,507	111,951	-
Abyan	47,936	64,134	4,484
Al Jawf	95,333	12,663	-
Sana'a	-	95,440	43
Al Mahwit	-	64,547	-
Raymah	-	11,802	-
Al Bayda	-	5,264	-
Al Maharah	-	1,043	-
Socotra	-	98	-

## CASH AND VOUCHER ASSISTANCE RESPONSE MAP



## PARTNERS BY TYPE

**43** Partners implemented cash and voucher assistance activities in September.

- 3 UN Agencies**: FAO, UNDP, WFP.
- 22 INGOs**: ACTED, ADRA, CARE, GC, GOTG, IRC, IRY, ITDC, LWR, MC, MH, NFDHR, NRC, OXFAM, PH, RDP, RFY, RI, SCI, SFHRP, SHS, SI, SIF, VHI, WC, ZOA.
- 18 NNGOs**: AFD, AlMaroof, BCHR, BFD, CRB, FMF, Ghadaq, HDP-HSA, HFD, Human Access, NFDHR, RDP, SFD, SFHRP, SHS, TFHD, YFCA, YWBOD.

## PARTNERS BY ACTIVITY

- Emergency Food Assistance**: ACTED, ADRA, AFD, AlMaroof, BCHR, CARE, CRB, FMF, GC, GOTG, HDP-HSA, HFD, Human Access, IRC, IRY, ITDC, LWR, MC, MH, NFDHR, NRC, OXFAM, PH, RDP, RFY, RI, SCI, SFHRP, SHS, SI, SIF, TFHD, VHI, WC, WFP, YFCA, YWBOD, ZOA.
- Cash for Work/Food Assistance for Assets & Cash+**: CARE, FAO, SCI, SFD, UNDP, WFP, BCHR, Ghadaq, BFD.

## NUMBER OF ORGANIZATIONS INVOLVED IN CVA ACTIVITIES

