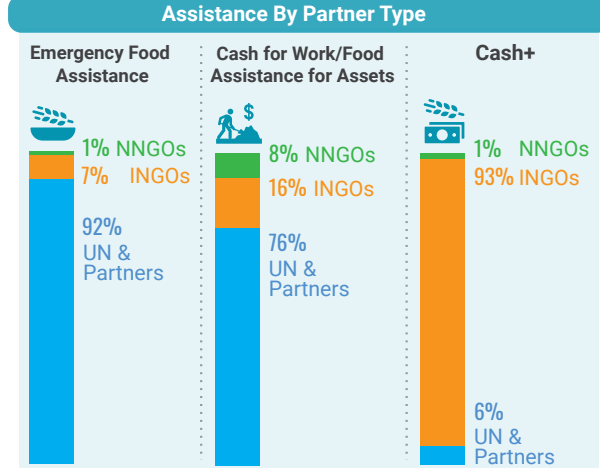
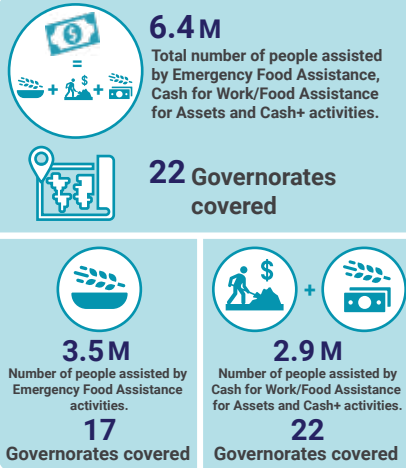


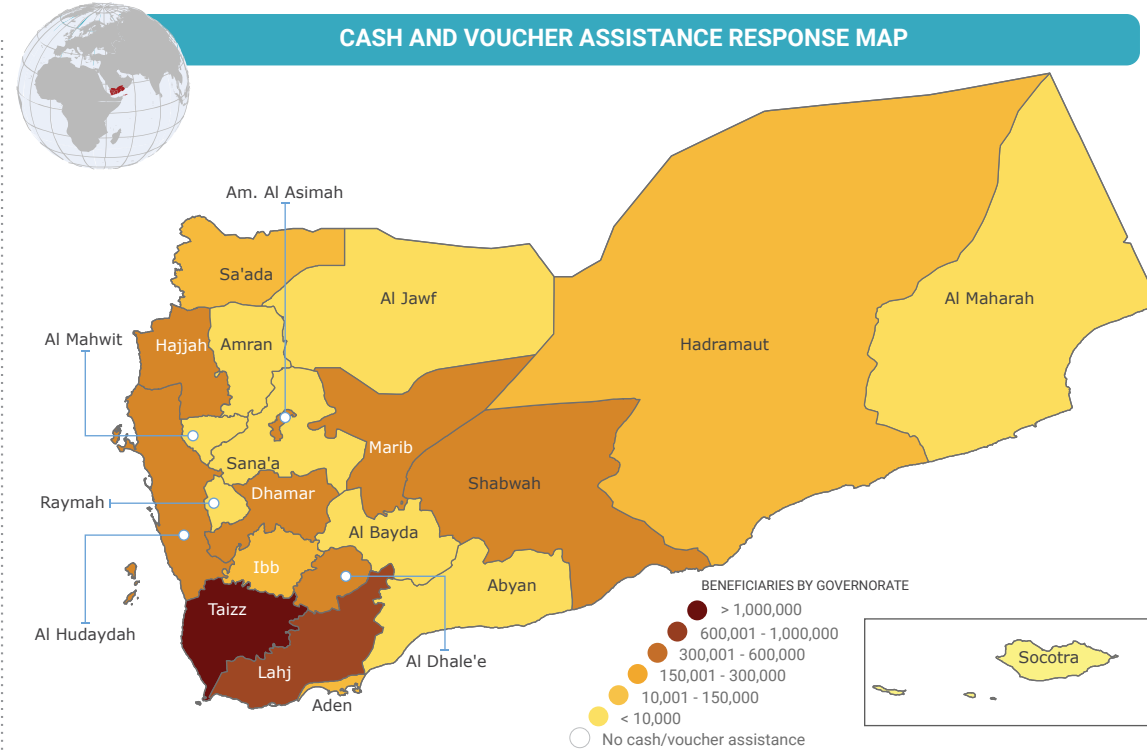
## CASH AND VOUCHER ASSISTANCE BY ACTIVITY



## CASH AND VOUCHER ASSISTANCE BY GOVERNORATE

GOVERNORATE	Emergency Food Assistance (Nov 2021)	Cash for Work/Food Assistance for Assets (Jan - Nov 2021)	Cash+ (Jan - Nov 2021)
Taizz	551,762	317,833	256,221
Lahj	628,536	180,825	47,668
Al Hudaydah	317,268	233,934	9,400
Dhamar	222,282	266,063	4,640
Marib	388,582	38,583	-
Shabwah	328,169	75,999	-
Amanat Al Asimah	325,864	75,397	-
Hajjah	117,902	270,874	2,046
Al Dhale'e	225,276	87,951	8,496
Hadramaut	7,005	241,410	20,042
Aden	208,599	36,569	7,033
Ibb	11,269	171,026	9,191
Sa'ada	-	160,984	-
Amran	671	133,637	-
Al Jawf	100,002	13,034	-
Sana'a	-	96,504	43
Abyan	21,170	68,712	4,484
Al Mahwit	5,804	65,298	-
Raymah	-	14,876	-
Al Bayda	-	12,509	-
Al Maharah	119	11,263	-
Socotra	-	3,934	-

## CASH AND VOUCHER ASSISTANCE RESPONSE MAP



### PARTNERS BY TYPE

**46** Partners implemented cash and voucher assistance activities in November.

- 3 UN Agencies:** FAO, UNDP, WFP.
- 19 INGOs:** ADRA, CARE, Cordaid, GC, GOTG, IRY, ITDC, MC, MH, NRC, OXFAM, PH, RFY, RI, SCI, SIF, VHI, WC, ZOA.
- 24 NNGOs:** AIMarroof, BCHR, CRB, FMF, Ghadaq, HDP-HSA, HFD, Human Access, MFD, NDEO, NFDHR, NMO, RDP, RRD, SELAH, SFD, SFHRP, SHS, SRA, YDH, YFCA, YLDF, Yomaken, YWBOD.

### PARTNERS BY ACTIVITY

- Emergency Food Assistance:** ADRA, AIMarroof, BCHR, CARE, Cordaid, CRB, FMF, GC, GOTG, HDP-HSA, HFD, Human Access, IRY, ITDC, MC, MFD, MH, NDEO, NFDHR, NRC, OXFAM, PH, RDP, RFY, RI, RRD, SCI, SELAH, SFHRP, SHS, SIF, VHI, WC, WFP, YDH, YFCA, YLDF, YWBOD, ZOA.
- Cash for Work/Food Assistance for Assets & Cash+:** ADRA, BCHR, CARE, FAO, FMF, Ghadaq, ITDC, NMO, NRC, OXFAM, SCI, SFD, SRA, UNDP, WC, WFP, Yomaken, ZOA.

## NUMBER OF ORGANIZATIONS INVOLVED IN CVA ACTIVITIES

