

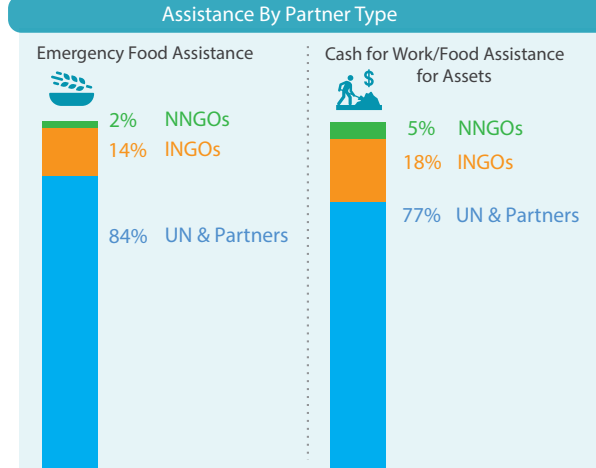
## CASH AND VOUCHER ASSISTANCE BY ACTIVITY

**5.1 M**  
Total number of people assisted by Emergency Food Assistance and Cash for Work/Food Assistance for Assets activities.

**21** Governorates covered

**3.4 M**  
Number of people assisted by Emergency Food Assistance activities.  
**17** Governorates covered

**1.7 M**  
Number of people assisted by Cash for Work/Food Assistance for Assets activities.  
**21** Governorates covered

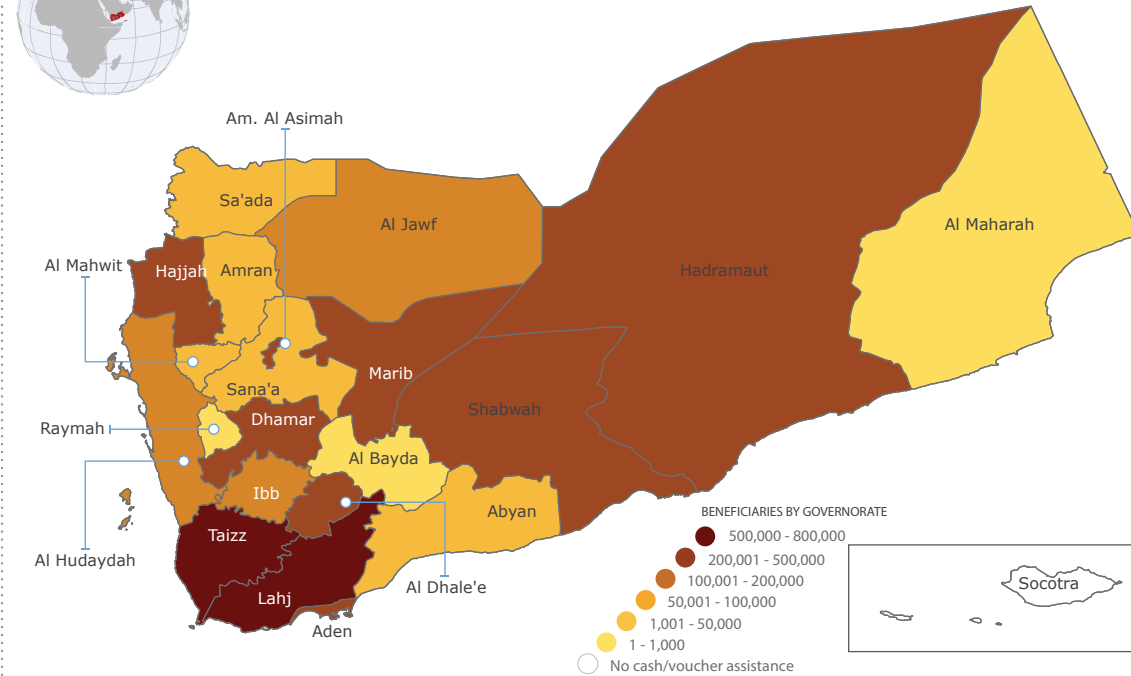


## CASH AND VOUCHER ASSISTANCE BY GOVERNORATE

GOVERNORATE	Emergency Food Assistance	Cash for Work/Food Assistance for Assets
Lahj	637,323	161,603
Taizz	572,952	191,116
Marib	387,084	29,777
Dhamar	254,380	159,432
Hajjah	199,794	207,957
Shabwah	324,047	61,719
Amanat Al Asimah	315,453	40,243
Aden	241,925	25,305
Al Dhale'e	207,875	47,761
Hadramaut	40,754	183,963
Al Hudaydah	40,926	103,019
Al Jawf	104,762	12,467
Ibb	-	103,998
Sana'a	595	85,771
Sa'ada	4,893	81,010
Abyan	18,044	60,949
Amran	-	70,343
Al Mahwit	-	63,903
Raymah	-	7,210
Al Maharah	2,695	581
Al Bayda	-	2,947
Socotra	-	-



## CASH AND VOUCHER ASSISTANCE RESPONSE MAP



### PARTNERS BY TYPE

**51** Partners implemented cash and voucher assistance activities in May.

- 3 UN Agencies:** FAO, UNDP, WFP.
- 22 INGOs:** ACF, ACTED, ADRA, CARE, DA, DKH, GC, HAY, IHUK, IRC, IRY, ITDC, MC, NRC, VHI, OXFAM, PH, RI, SCI, SI, SIF, ZOA
- 26 NNGOs:** AlMaroof, AOBWC, BCHR, BFD, CRB, FFM, Ghadaq, HDP-HSA, HFD, Human Access, NFDHR, NMO, RADF, RRD, RSD, SDF, SFD, SFHRP, SHS, SMEPS, TFHD, WLDF, WUAs, YFCA, YLDF, YWU

### PARTNERS BY ACTIVITY

**Emergency Food Assistance:** ACF, ACTED, ADRA, AlMaroof, CARE, CRB, DA, GC, HDP-HSA, HFD, IHUK, IRC, ITDC, NMO, NRC, OXFAM, PH, RI, RRD, RSD, SCI, SI, SIF, SMEPS, TFHD, WFP, YFCA, FFM, Human Access, IRY, MC, NFDHR, SFHRP, SHS, VHI.

**Cash for Work/Food Assistance for Assets:** ADRA, AOBWC, BCHR, BFD, CARE, DKH, FAO, FFM, GC, Ghadaq, HAY, IRY, ITDC, OXFAM, RADF, RI, SCI, SDF, SFD, UNDP, WFP, WLDF, WUAs, YFCA, YLDF, YWU, ZOA.

## NUMBER OF ORGANIZATIONS INVOLVED IN CVA ACTIVITIES

