

Coronavirus Disease 2019 (COVID-19)

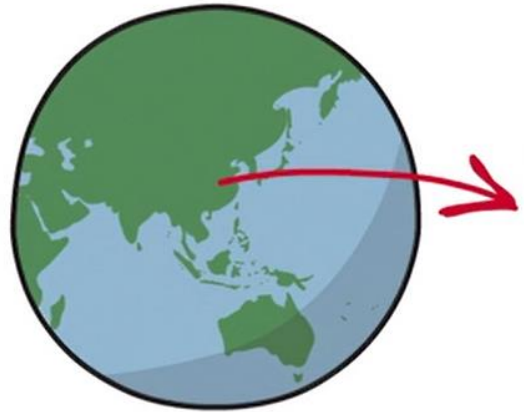
Dr. Lamin Sonko
Logistic Cluster/WFP
South Sudan

COVID-19 is an emerging, rapidly evolving situation. The information provided in this power point is based on current guidance and is subject to change. (Created 26-3-2020)



Introduction To COVID-19

December 2019



cluster of pneumonia cases in China

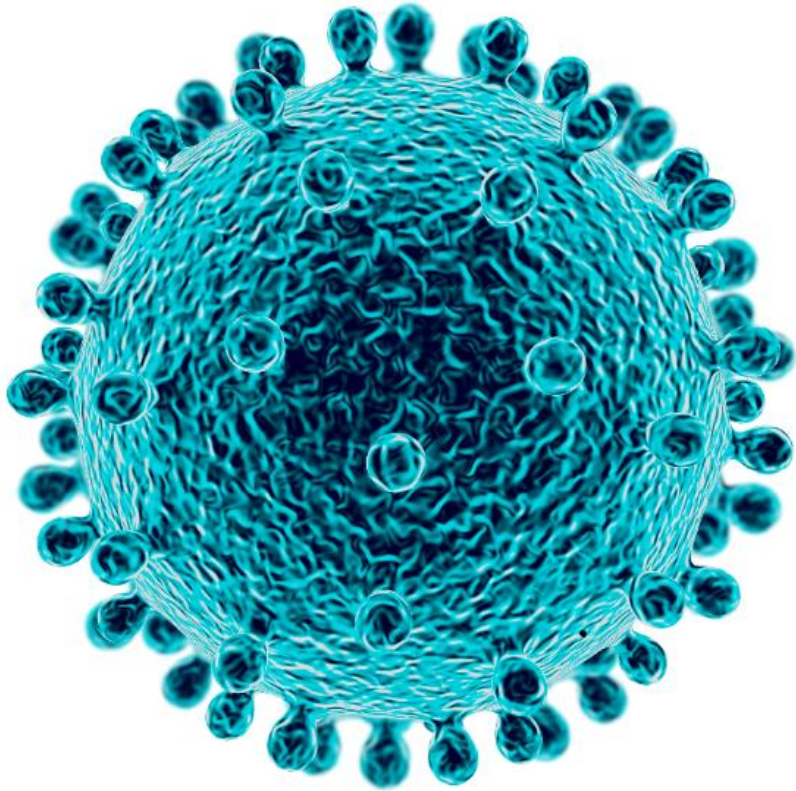
previously unknown virus



2019 Novel Coronavirus

what is known might change

What Do We Know About Coronaviruses?



Coronaviruses have a crown-like appearance under the microscope

Coronaviruses are a large family of viruses - some cause illness in people, and others only infect animals.

Some coronaviruses infect animals then spread to people, and then spread person to person such as:

- Middle East Respiratory Syndrome (MERS)
- Severe Acute Respiratory Syndrome (SARS)
- **Coronavirus Disease 2019 (COVID-19)**

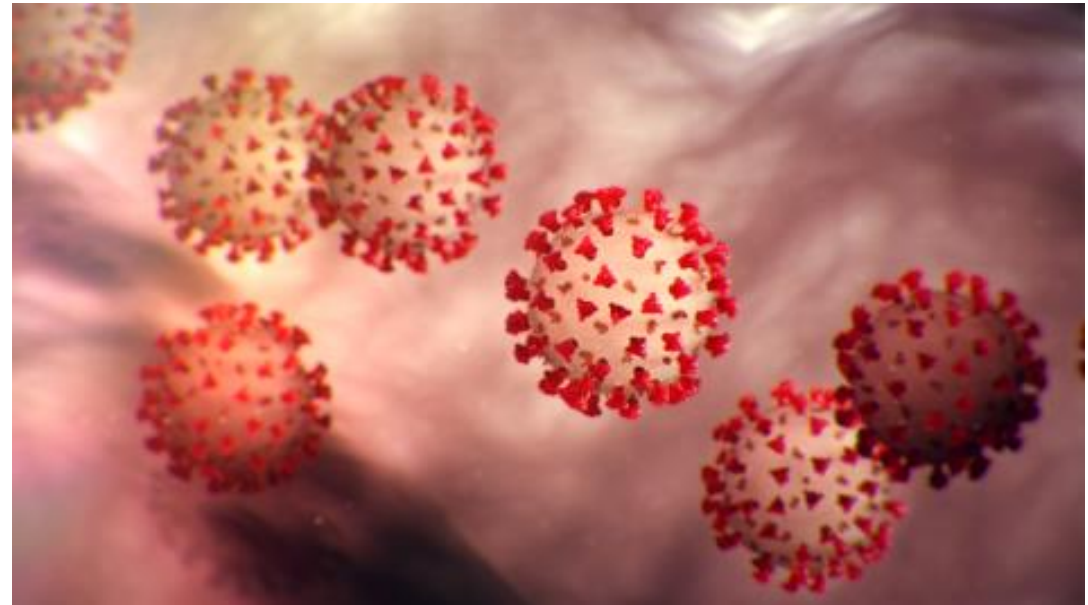
Common coronaviruses include some that cause mild upper-respiratory illnesses, like the common cold.

What is COVID-19?

Coronavirus disease 2019 or COVID-19 is a respiratory illness that can spread from person to person.

The virus that causes COVID-19 is a **new** coronavirus first identified during an investigation into an outbreak in Wuhan, Hubei Province, China.

Initial case-patients reported visiting a large seafood and live animal market in Wuhan.



Epidemic of COVID-19 Cases Globally

<https://coronavirus.jhu.edu/map.html>

As of 25.03.2020:

Total Confirmed: 438,749

Total Death: 19,675

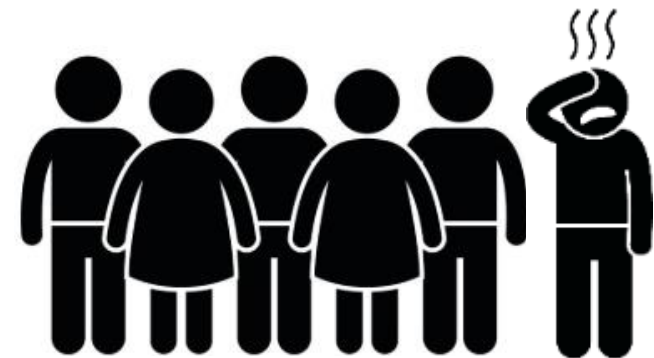
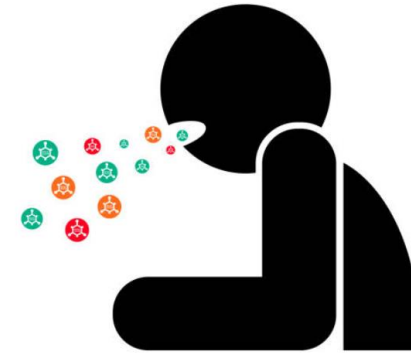
Total Recovered: 111,895



How Does COVID-19 Spread?

COVID-19 spreads the same way the flu and other respiratory diseases spread:

- Through respiratory droplets produced when an infected person coughs or sneezes.
- These droplets can land in the mouths or noses of people who are nearby or possibly be inhaled into the lungs.
- Between people who are in close contact with one another (within about 6 feet).



What are the Symptoms of COVID-19?

Symptoms of COVID-19 are:

- Fever
- Cough
- Shortness of breath

Symptoms appear **2 to 14 days** after exposure. The average incubation period of COVID-19 is reported to be about **5 days**.

Eighty percent of patients with confirmed COVID-19 have mild symptoms.

In very severe cases, patients with COVID-19 have developed pneumonia in both lungs. In some cases, COVID-19 can be fatal.

What Does a COVID-19 Patient Look Like?

FEVER

COUGH

SHORTNESS
OF BREATH



2-14 DAYS
AFTER
EXPOSURE

How Can COVID-19 Infection be Prevented?

Wash your hands often with soap and warm water for at least 20 seconds - use an alcohol-based hand sanitizer if soap and water are not available.

Avoid touching your eyes, nose and mouth with unwashed hands.

Cover your cough or sneeze with a tissue, then throw the tissue in the trash.

Stay home if you're sick.

Avoid close contact with people who are sick.

Sing "Happy Birthday" two times through as you're washing.



What Help And What Doesn't

Currently the CDC **does not recommend** the use of any facemasks for the general public to prevent infection.



N95 respirators



Surgical facemasks

How Can COVID-19 Infection be Prevented?

Clean frequently touched surfaces and objects daily (e.g., tables, countertops, light switches, doorknobs, cabinet handles) using regular household cleaning products and water.

Clean your electronic devices (phones, tablets, laptops, keyboards) with approved wipes or cleaning products.

Always follow the manufacturer's instructions for all cleaning and disinfection products.



What Do All These Things Mean?

Community spread means people have been infected with the virus in an area, including some who are not sure how or where they became infected.

Social distancing means remaining out of congregate settings, avoiding local public transportation (e.g., bus, trains, ride share), and maintaining distance (approximately 6 feet) from others.

Congregate settings are public places where close contact with others may occur, such as shopping centers, theaters, stadiums, workplaces and schools.

Incubation period refers to the time from exposure to an infection to the onset of symptoms. Different diseases have different incubation periods.

Isolation separates those with who **are sick** with a contagious disease from those who are not to avoid transmission.

Quarantine separates and restricts movement of people who **may have been exposed** to a contagious disease, but **do not show symptoms**.

Epidemic is a rapid increase in the number of cases of a disease above what is normally expected in a specific population.

Pandemic refers to a global epidemic or one that has spread over several countries or continents, affecting many people.

Outbreak carries the same definition as epidemic, but it is used for a more limited geographic area.

COVID-19 and Stigma

Diseases can make anyone sick regardless of their race, tribe or ethnicity or where they live!



People of Asian or European descent are not more likely to get COVID-19 than any other South Sudanese.

Stopping stigma can help communities withstand or recover quickly from difficult situations, such as disease outbreaks.

Communicating the facts that viruses do not target specific tribes or ethnic groups, and how COVID-19 spreads can **help stop stigma.**

Last Thoughts

Stay calm and be prepared.

Get your information from reliable and accurate sources rather than to buying into hype and misinformation.

<https://newgo.wfp.org/>

<https://www.who.org>

coronavirus.jhu.edu/

Be kind, staying mindful of actions that could perpetuate discrimination or stigma associated with COVID-19 or other infectious diseases.

Prevention, not panic!



COVID-19

QUESTIONS?



COVID-19 FAQ

Is there a vaccine, drug or treatment for COVID-19?

To date, there is no vaccine and no specific antiviral medicine to prevent or treat COVID-2019. However, those affected should receive care to relieve symptoms. People with serious illness should be hospitalized.

Should I wear a mask to protect myself?

Only wear a mask if you are ill with COVID-19 symptoms (especially coughing) or looking after someone who may have COVID-19.

Can I get COVID-19 on an airplane?

Because of how air circulates and is filtered on airplanes, most viruses and other germs do not spread easily on airplanes. Although the risk of infection on an airplane is low, travelers should try to avoid contact with sick passengers and wash their hands often with soap and water or use hand sanitizer containing at least 60% alcohol.

Am I at risk for COVID-19 from a package or products shipped from China or Europe?

Currently there is no evidence to support transmission of COVID-19 associated with imported goods and there have not been any cases of COVID-19 in the United States associated with imported goods.

COVID-19 FAQ

How long does the virus survive on surfaces?

It is not certain how long the virus that causes COVID-19 survives on surfaces. Studies suggest that coronaviruses (including the COVID-19 virus) may survive on surfaces for a few hours or up to several days. If you think a surface may be infected, clean it with simple disinfectant to kill the virus and protect yourself and others.

Can I catch COVID-19 from my pet?

No. There is no evidence that companion animals or pets such as cats and dogs have been infected or could spread the virus that causes COVID-19.

Who is at risk of developing severe illness?

While we are still learning about how COVID-2019 affects people, older persons and persons with pre-existing medical conditions (such as high blood pressure, heart disease, lung disease, cancer or diabetes) appear to develop serious illness more often than others.

Can I get COVID-19 from Corona beer?

No, you can't get COVID-19 from Corona beer. Beer neither causes infection with a virus, and it does not cure it.

Can you get COVID-19 if you eat at Chinese restaurants in South Sudan?

No, you can't get COVID-19 eating in a Chinese restaurant.