

## CO3. RESTORING LIVELIHOODS



During January–March, FSLC partners assisted **4,743** people (or 47%) out of 10,014 people targeted in 2021 HRP. It is 180% higher than the last quarter achievement of 2020 - 1,692 people assisted. The contributors for the first quarter report are DRC 49%, followed by IOM 42%, UNDP 4%, and Caritas 4%.

The need to protect and scale up livelihood activities remains high, including promoting community-level resilience to shocks.



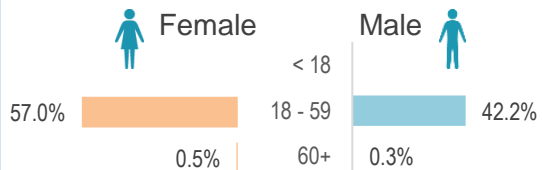
### PEOPLE TARGETED

**10.1K** targeted in 2020 (GCA)

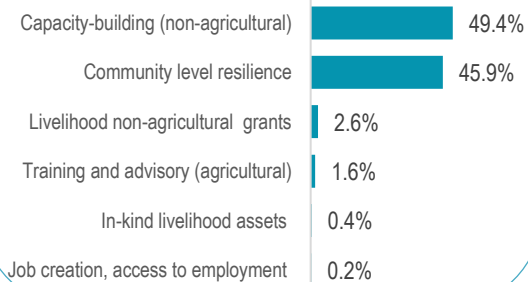


### PEOPLE ASSISTED

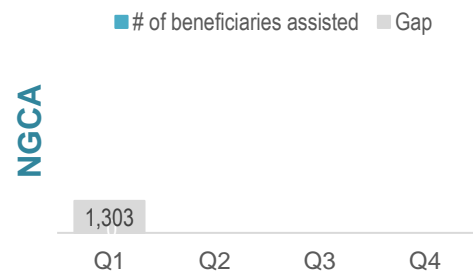
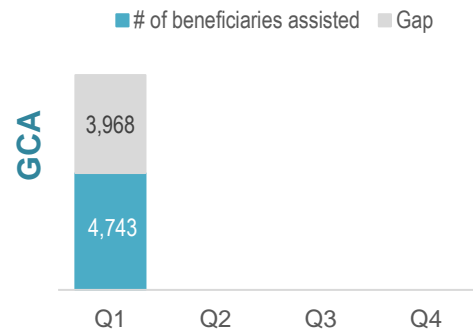
**4.7K** GCA



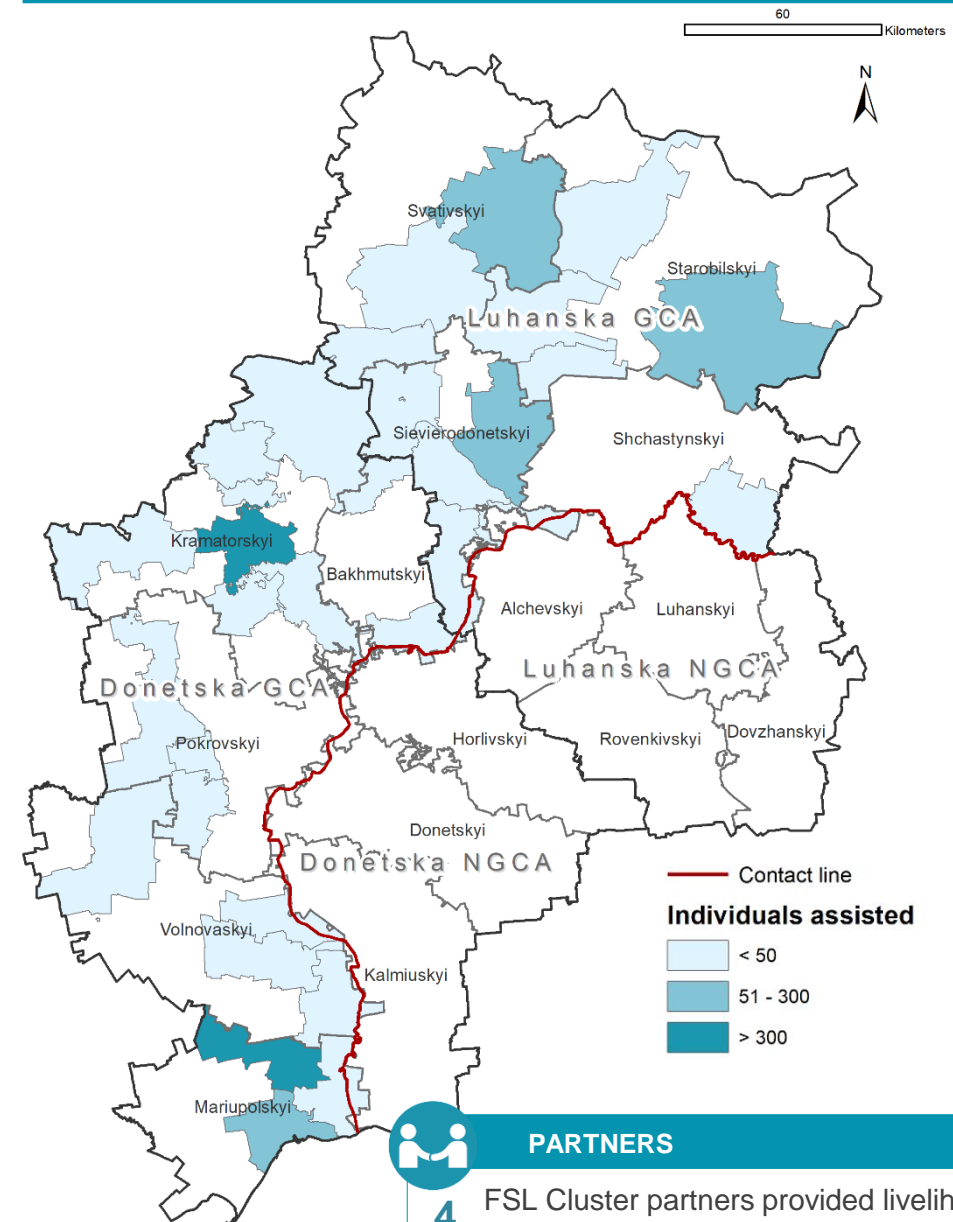
### Response modality



### QUARTERLY RESPONSE AND GAP



## PEOPLE ASSISTED BY HROMADA



### PARTNERS

**4** FSL Cluster partners provided livelihood support (2 INGO and 2 UN agencies)