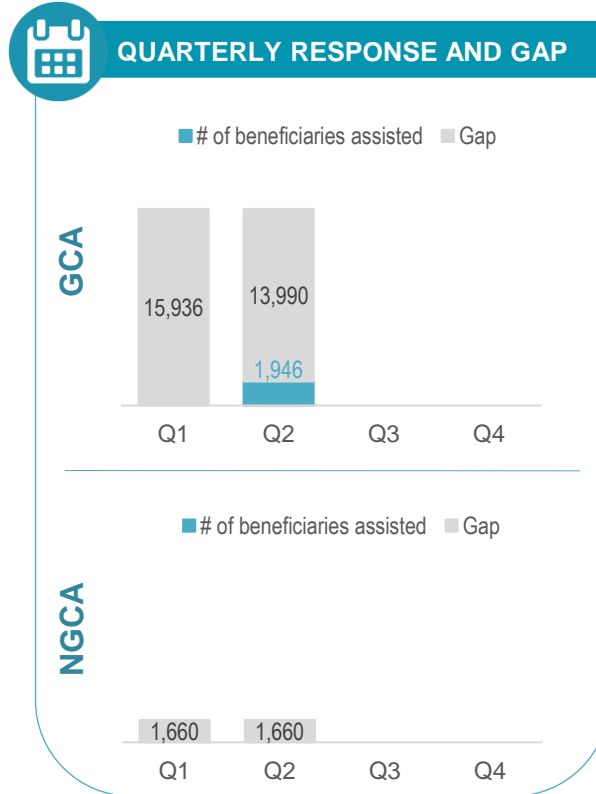
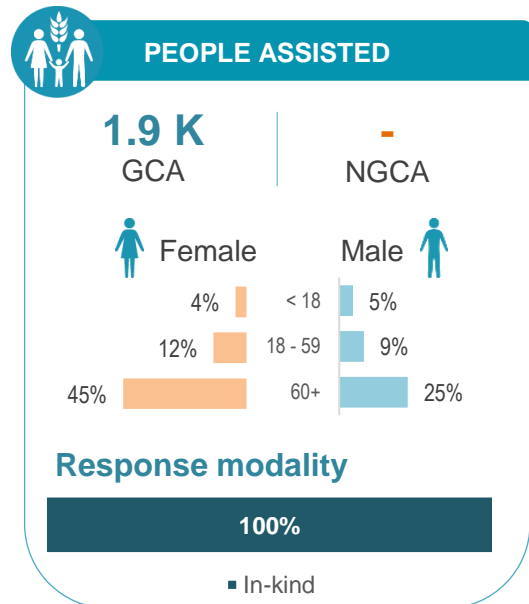
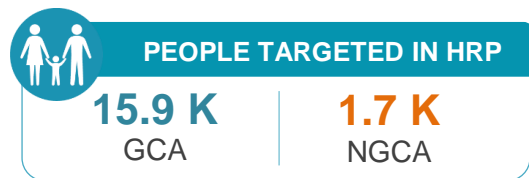


CO2. EMERGENCY AGRICULTURE ASSISTANCE



In the second quarter of 2021, 1 FSLC partner provided agricultural assistance and supported 1,000 individuals and 411 households (that makes in total about 1,950 people that is 11% achievement) out of 17,596 people targeted. It was the first distribution of emergency agriculture in 2021 by FSLC partners. PiN covered 100% of the people assisted in April – June 2021 providing agricultural equipment and support to backyard kitchen gardening – seeds and drip irrigation systems.

There is a need to scale up emergency agriculture inputs to improve food security status of people affected, and support the livelihood of farming households. The need for emergency agricultural assistance remains high along the 'contact line', including in NGCA, most especially considering the existing condition with mine contamination of fields, water shortages, and unstable irrigation.



PEOPLE ASSISTED BY HROMADA

