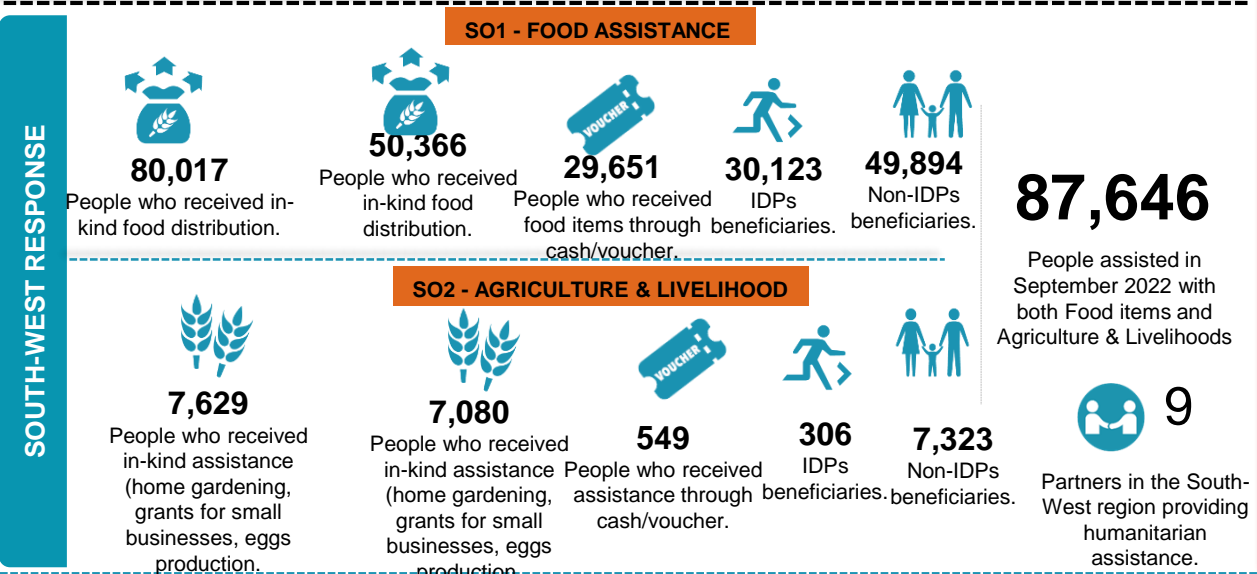
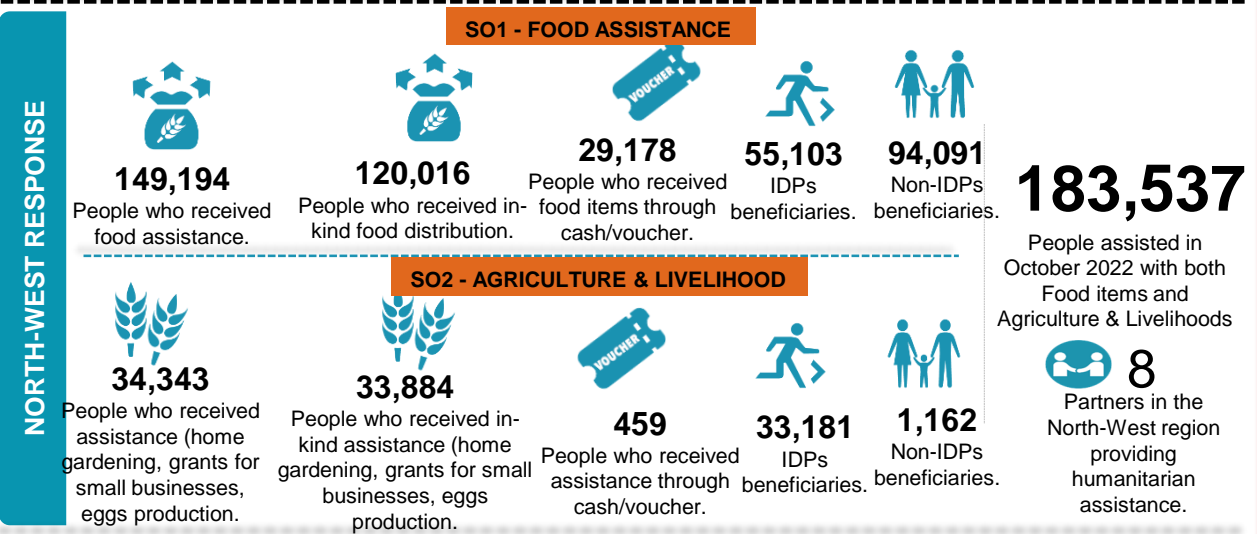
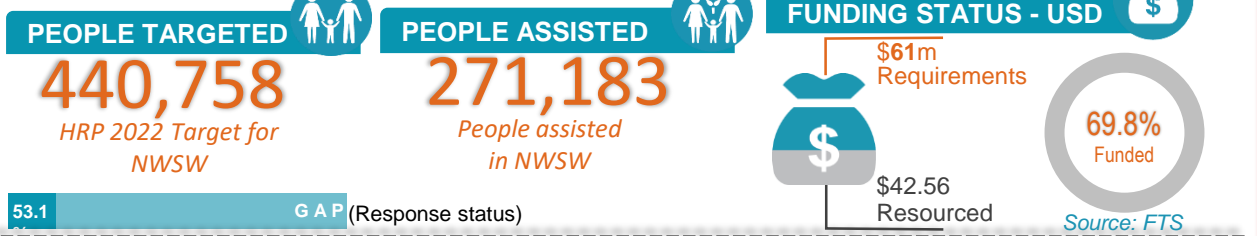


As of October, 14 partners collectively assisted 271,183 people with emergency food, agriculture, and livelihoods humanitarian assistance. This means a 76.5 percent gap was recorded based on the PiN (HRP 2022) and 38% gap based on HRP 2022 target. Out of the total beneficiaries, about 85 percent of them received food items/assistance and only 15 percent of the total beneficiaries received assistance through cash and voucher modalities. Using In-kind food, WFP assisted 50,066 beneficiaries with 893.741 MT(double distribution done in September covering September and October) of mixed commodities in Meme and Manyu divisions in the South West and 120,016 beneficiaries with 885.340 MT through in-kind modality in Bui, Mezam, Momo, Menchum, Ngoketunjia, Donga Mantung and Boyo divisions in the North West Region. For cash modality, 29,308 beneficiaries were reached in SW and 17,956 in NW. FAO continued monitoring of 550 mini poultry production units and a total of 221,612 eggs harvested and sold for 14,774,133 XAF, 700 HHs with African nightshade and tomatoes farms, 50 mushroom production units, 40 established PWDs fish production units and a total of 98.5kg of fish harvested, monitored 30 established PWDs vegetable gardens with a total of 147.5Kg and sold at 125,300 XAF in NWSW.



The FSC response is coordinated by Food and Agriculture Organization (FAO) and World Food Programme (WFP) with NRC.

The boundaries and names shown on this map do not imply official endorsement or acceptance by the UN.

Disclaimer: This dashboard captures information available at the moment of production based on partners' reporting.

Production date: 20-11-2022
Data sources: FSC 5Ws data for October 2022 /FSC Partners and Cadre Harmonise.

Contact: NWSW Cameroon Food Security Cluster
info.cameroon@fscluster.org