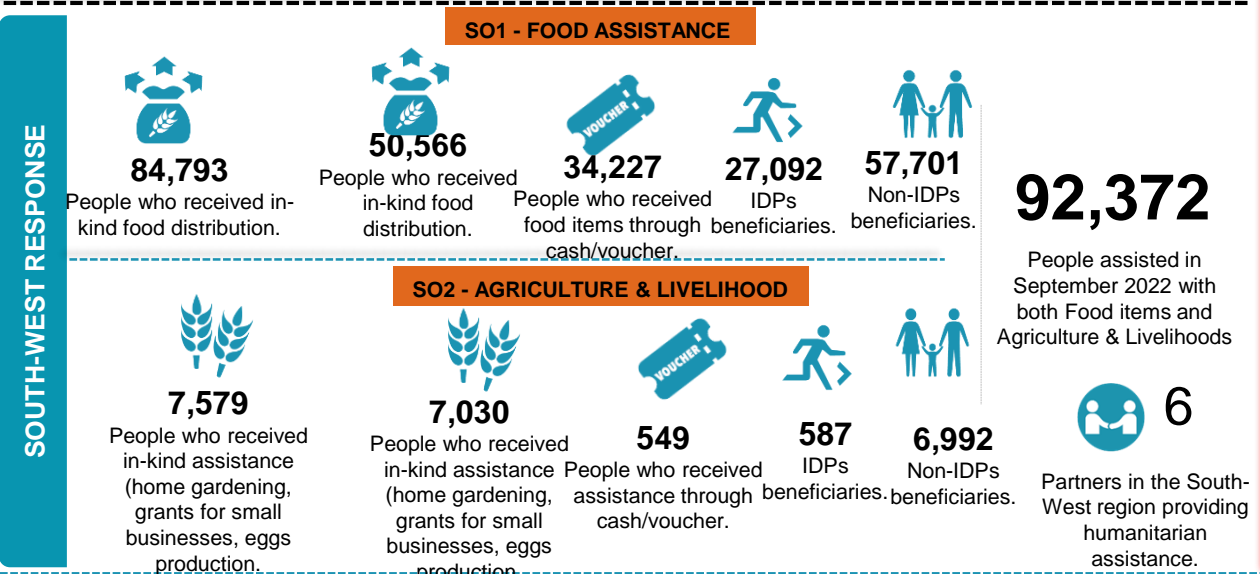
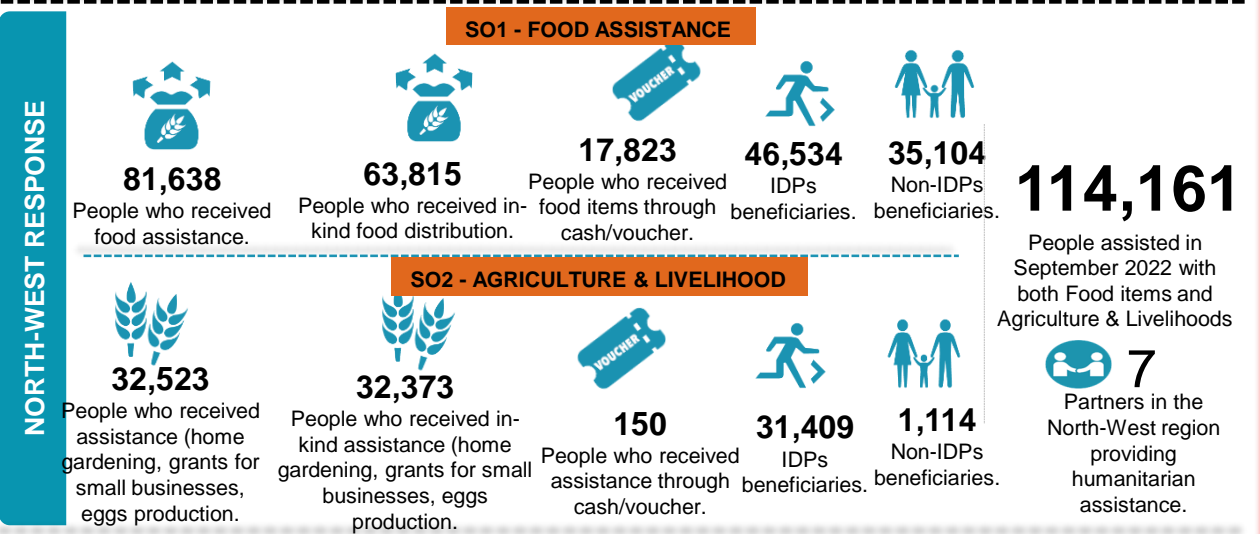
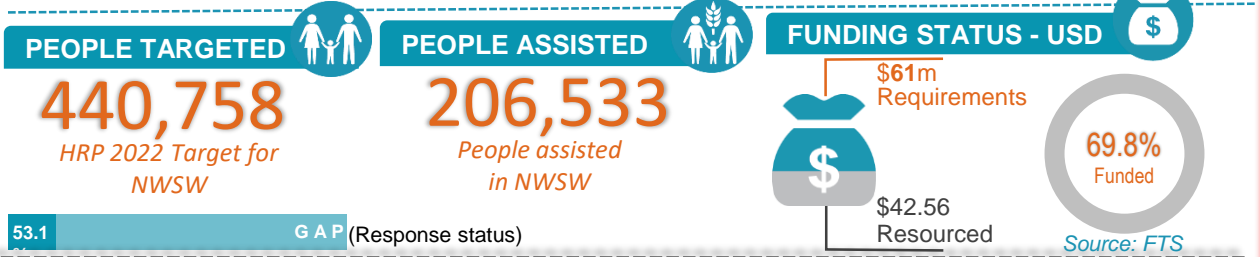


As of September, 13 partners collectively assisted 206,536 people with emergency food, agriculture, and livelihoods humanitarian assistance. This means a 72 percent gap was recorded based on the PIN (HRP 2022) and 53.1% gap based on HRP 2022 target. Out of the total beneficiaries, about 81 percent of them received food items/assistance and only 19 percent of the total beneficiaries received assistance through cash and voucher modalities. Using In-kind food, WFP assisted 50,066 beneficiaries with 893.741 MT(double distribution covering September and October) of mixed commodities in Meme and Manyu divisions in the South West and 63,815 beneficiaries with 510 MT through in-kind modality in Bui, Mezam, Momo, and Boyo divisions in the North West Region. FAO continued monitoring of 550 mini poultry production units and a total of 213,217 eggs harvested and sold for 14,214,466 XAF, 700 HHs with African nightshade and tomatoes farms, 50 mushroom production units, 40 established PWDs fish production units and a total of 40kg of fish harvested, monitored 30 established PWDs vegetable gardens with a total of 63Kg and sold at 53,550 XAF in NWSW.



The FSC response is coordinated by Food and Agriculture Organization (FAO) and World Food Programme (WFP) with NRC.

The boundaries and names shown on this map do not imply official endorsement or acceptance by the UN.

Disclaimer: This dashboard captures information available at the moment of production based on partners' reporting.

Production date: 23-10-2022
Data sources: FSC 5Ws data for September 2022 /FSC Partners and Cadre Harmonise.

Contact: NWSW Cameroon Food Security Cluster
info.cameroon@fscluster.org