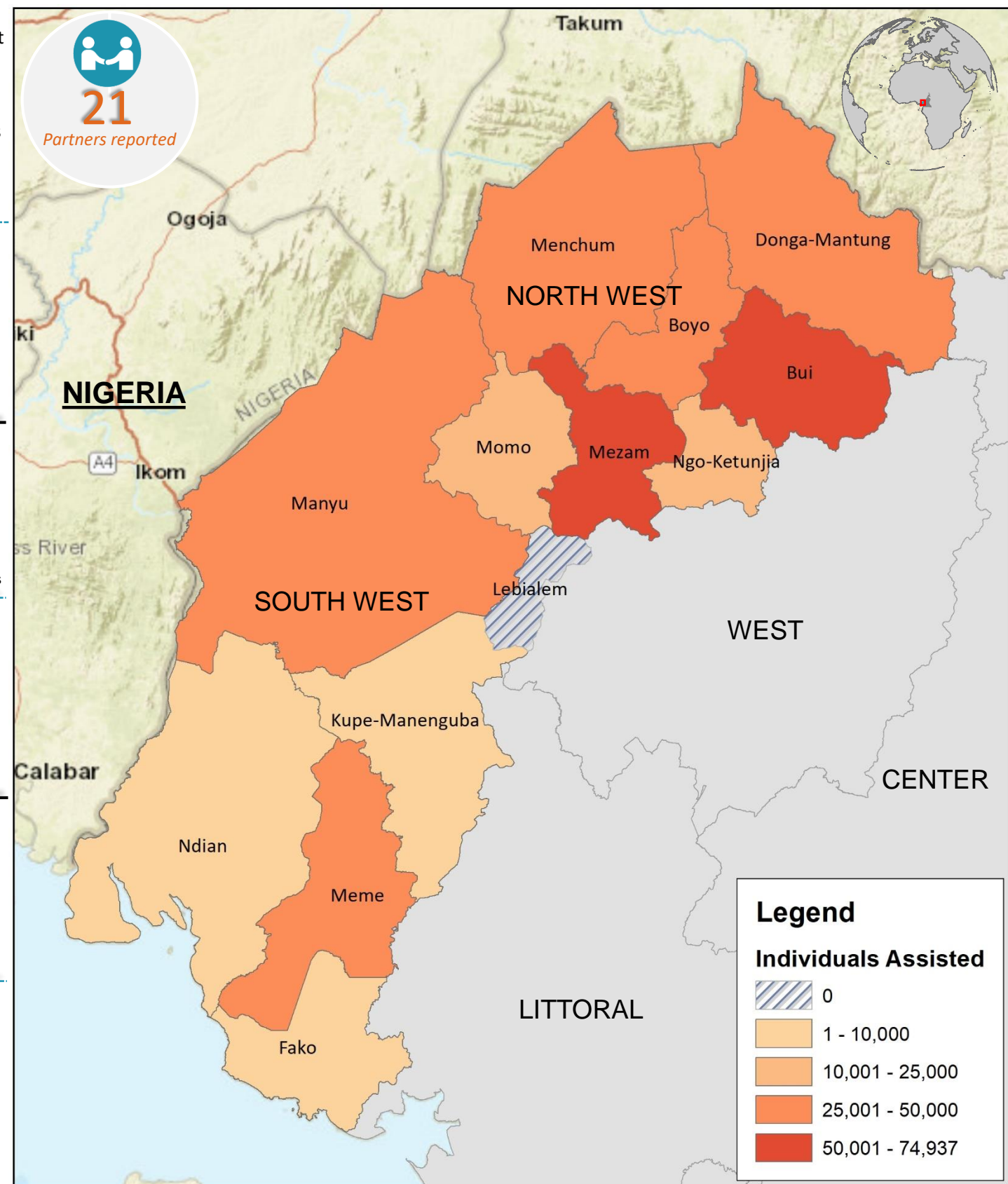
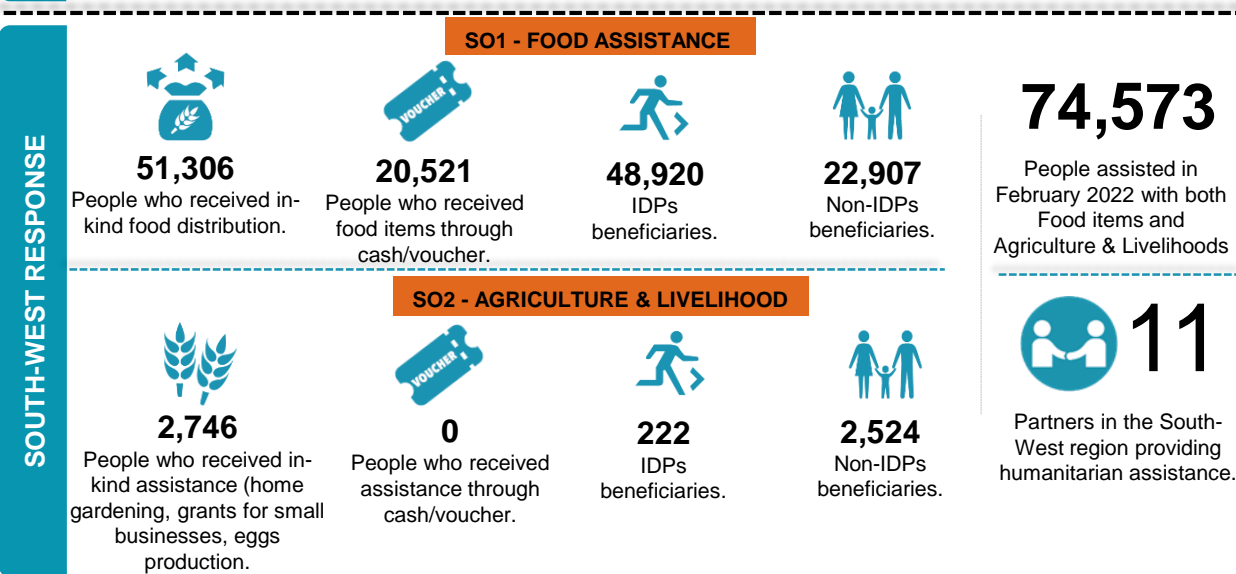
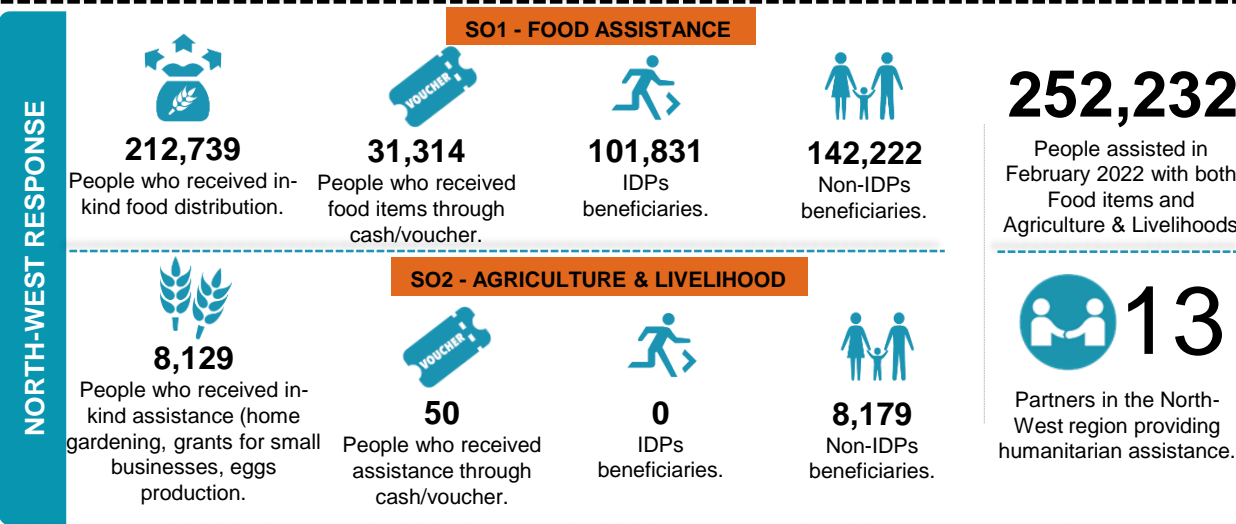
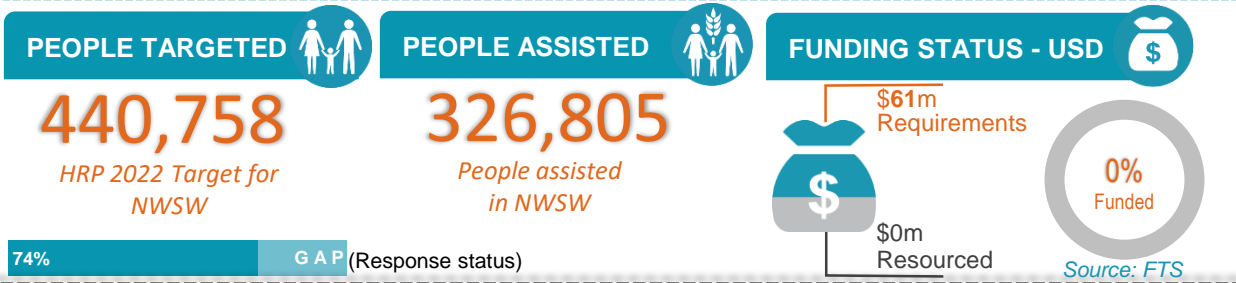


As of February, 21 partners collectively assisted 326,805 people with emergency food, agriculture, and livelihoods humanitarian assistance. This is a 72 percent gap was recorded based on the PiN (HRP 2022). Out of the total beneficiaries, about 97 percent of them received food item/assistance and only 16 percent of the total beneficiaries received assistance through cash and voucher modalities. WFP assisted 166,523 beneficiaries with 1,386 MT of mixed commodities in the North West and 51,256 beneficiaries with 415 MT through in-kind modalities in Manyu and Meme division in the South West Region. FAO carried out trainings in the two regions on market gardening, egg and mushroom production. 09 communities of nurseries of tomatoes and African nightshade were setup in the 02 regions. The FSC selected 02 local NGOs to attend a certified training on Cadre Harmonisé Analysis and later, they attended the Cadre Harmonisé workshop.



The FSC response is coordinated by Food and Agriculture Organization (FAO) and World Food Programme (WFP) with NRC.

The boundaries and names shown and the designations used on this map do not imply official endorsement or acceptance by the UN.

Disclaimer: This dashboard captures information available at the moment of production based on partners' reporting.

Production date: 17-March-2022
Data sources: FSC 5Ws data for February 2022 /FSC Partners and Cadre Harmonise.

Contact: NWSW Cameroon Food Security Cluster
info.cameroon@fscluster.org