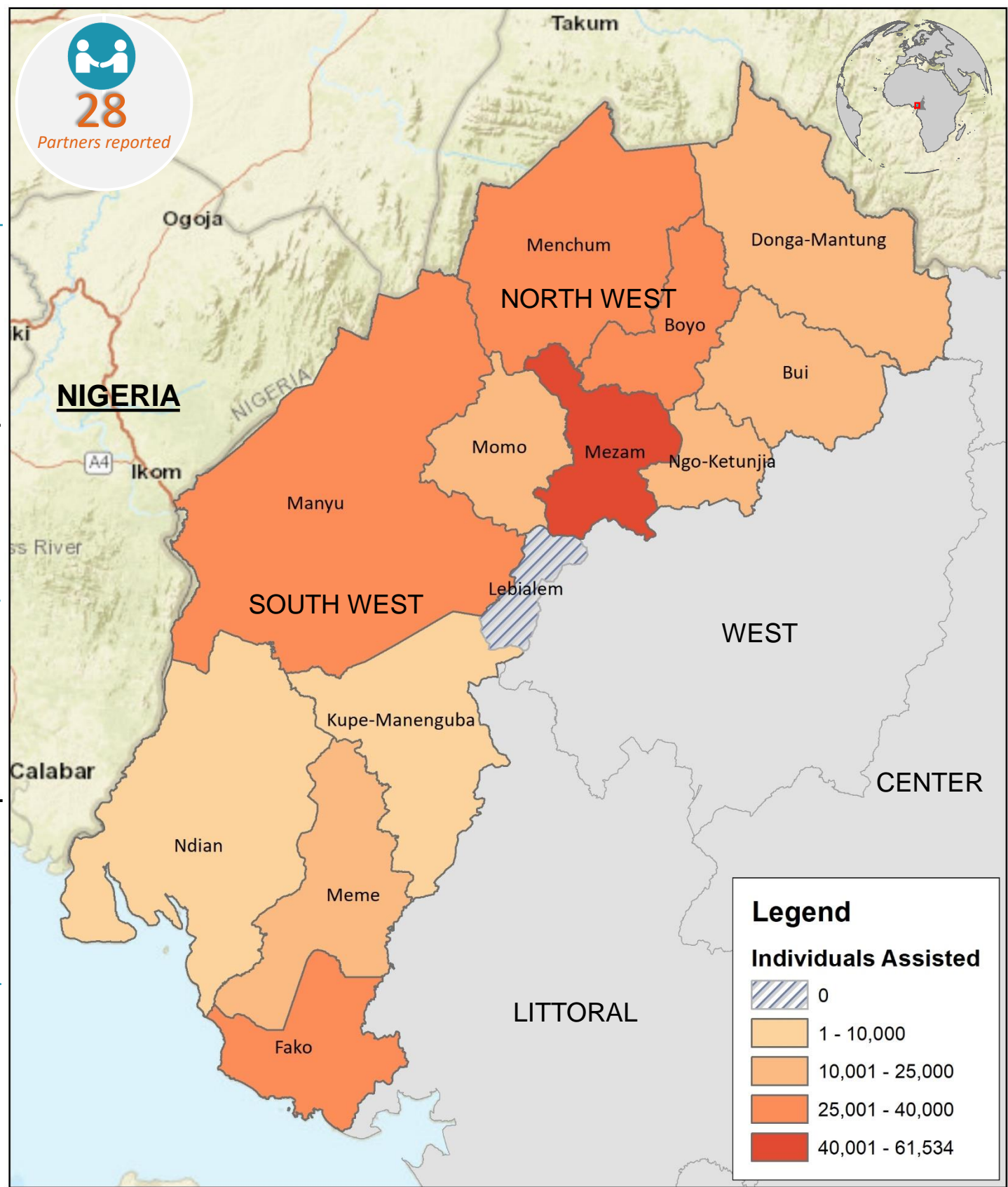
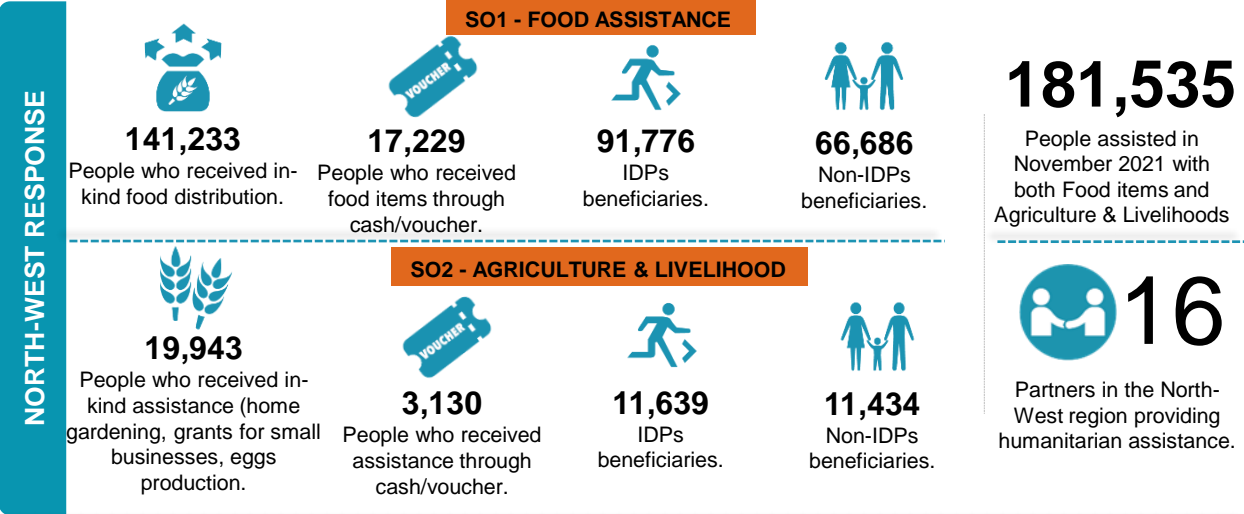


As of November, 28 partners collectively assisted 245,677 people with emergency food, agriculture, and livelihoods humanitarian assistance. This means a 74 percent gap is recorded based on the PiN (HRP 2021). Out of the total beneficiaries, about 89 percent received food assistance and 20 percent received assistance through cash and voucher modalities. WFP assisted 141,083 and 31,238 beneficiaries with food items in the North-West and South-West, respectively. Due to the recurrent incidents of looting and food diversion that have been happening, WFP temporarily stopped distribution in some locations and re-engaged communities through a robust communication strategy with all stakeholders. FAO monitored 300HHs for setting up of market gardening plots in 4 production basins. In collaboration with OCHA, the cluster facilitated a training of partners on HRP Project submission and released a document presenting the FSC vision for HPC 2022.



The FSC response is coordinated by Food and Agriculture Organization (FAO) and World Food Programme (WFP) with NRC.

The boundaries and names shown and the designations used on this map do not imply official endorsement or acceptance by the UN.

Disclaimer: This dashboard captures information available at the moment of production based on partners' reporting.

Production date: 27-December-2021
Data sources: FSC 5Ws data for November 2021 /FSC Partners and Cadre Harmonise.

Contact: NWSW Cameroon Food Security Cluster
info.cameroon@fscluster.org