



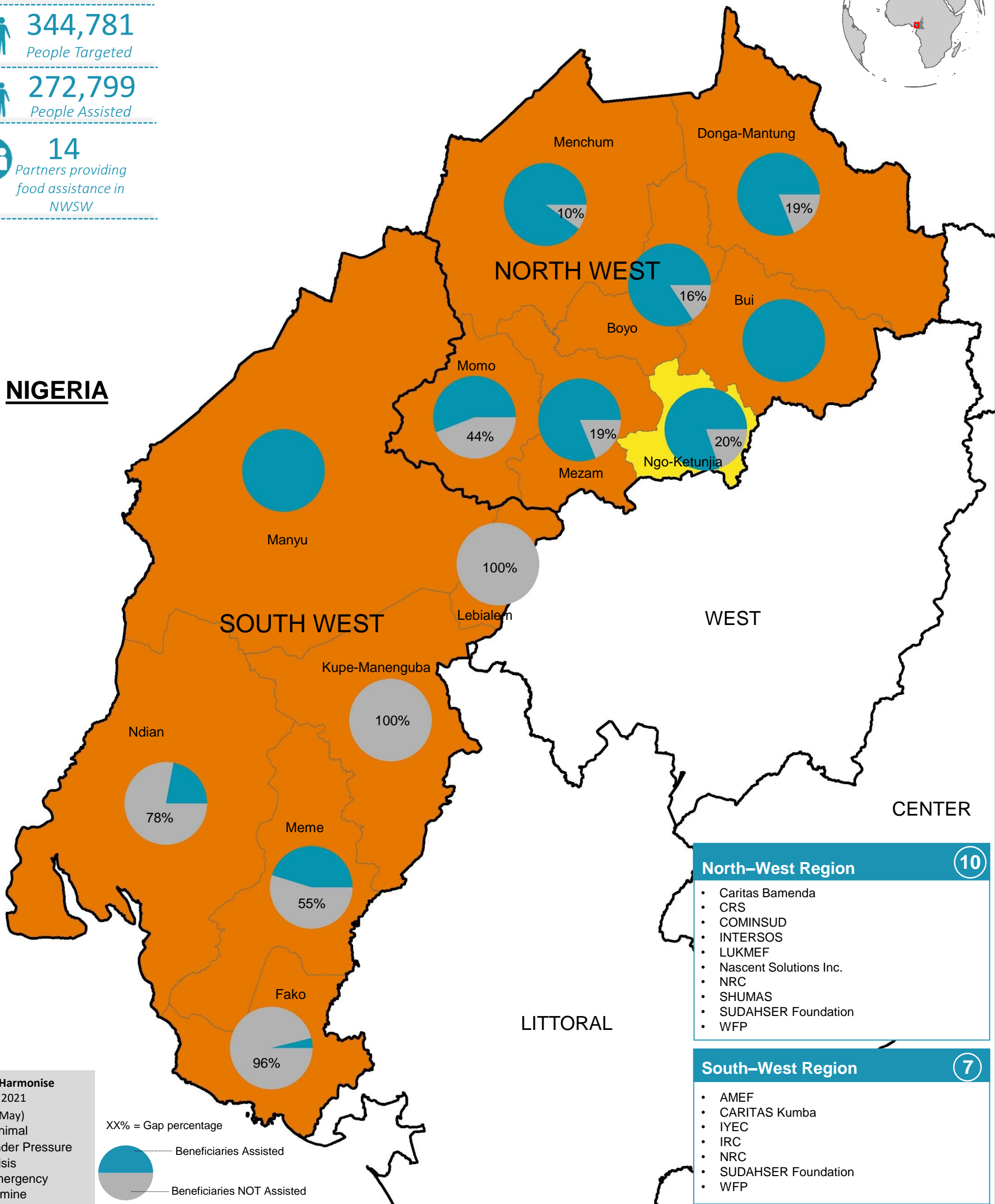
959,803
People in Need

344,781
People Targeted

272,799
People Assisted

14
Partners providing
food assistance in
NWSW

NIGERIA

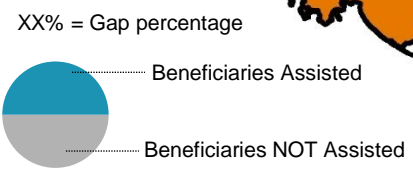


- North-West Region** 10
- Caritas Bamenda
 - CRS
 - COMINSUD
 - INTERSOS
 - LUKMEF
 - Nascent Solutions Inc.
 - NRC
 - SHUMAS
 - SUDAHSER Foundation
 - WFP

- South-West Region** 7
- AMEF
 - CARITAS Kumba
 - IYEC
 - IRC
 - NRC
 - SUDAHSER Foundation
 - WFP

Cadre Harmonise
March 2021
(Mar-May)

- Minimal
- Under Pressure
- Crisis
- Emergency
- Famine



The FSC response is coordinated by Food and Agriculture Organization (FAO) and World Food Programme (WFP) with NRC.

Disclaimer: This dashboard captures information available at the moment of production based on partners' reporting.

Production date: 14-November-2021
Data sources: FSC 5Ws data for October 2021 /FSC Partners, Cadre Harmonise.

Contact: NWSW Cameroon Food Security Cluster
Info.cameroon@fcluster.org



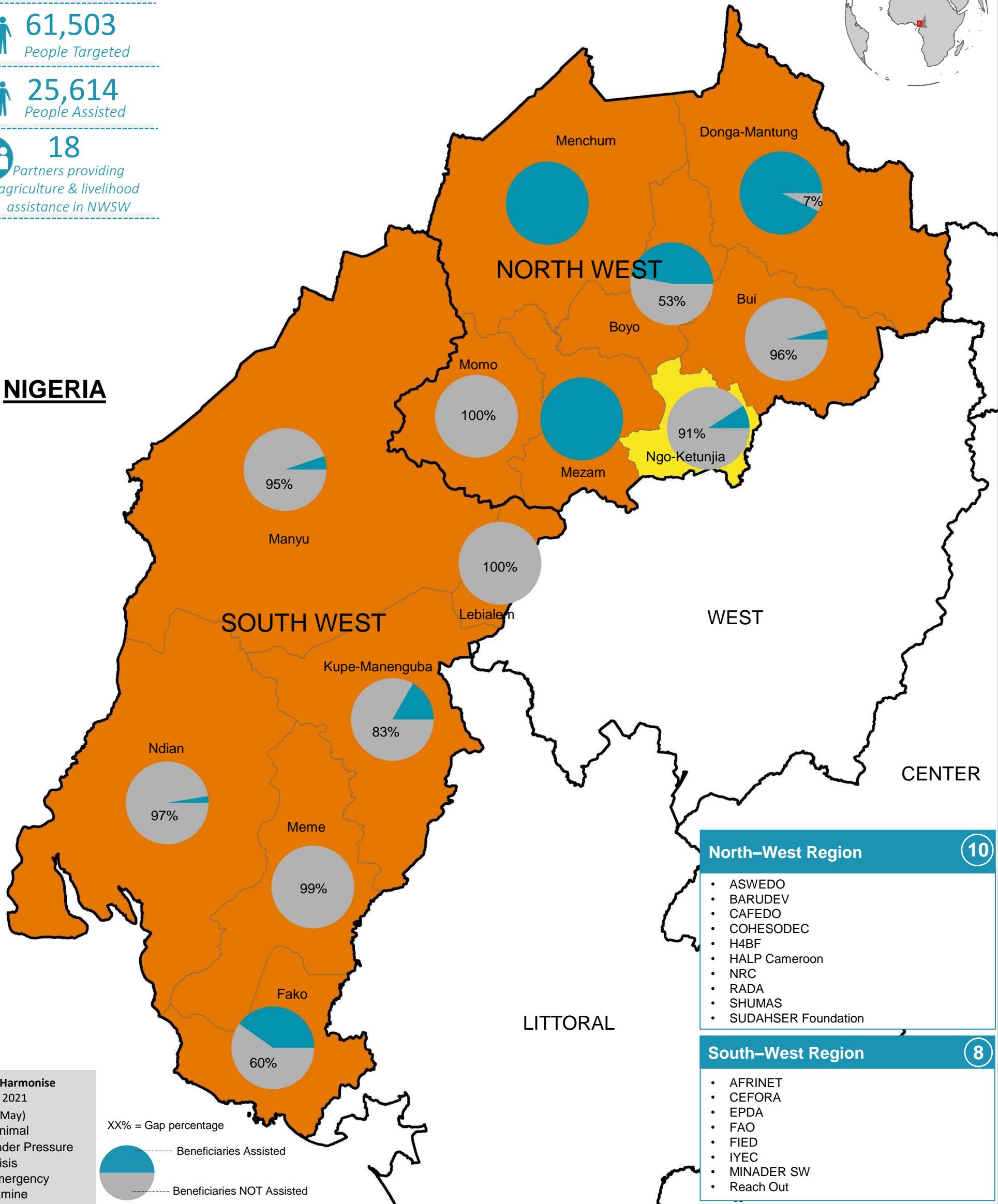
959,803
People in Need

61,503
People Targeted

25,614
People Assisted

18
Partners providing
agriculture & livelihood
assistance in NWSW

NIGERIA



- North-West Region** 10
- ASWEDO
 - BARUDEV
 - CAFEDO
 - COHESODEC
 - H4BF
 - HALP Cameroon
 - NRC
 - RADA
 - SHUMAS
 - SUDAHSER Foundation

- South-West Region** 8
- AFRINET
 - CEFORA
 - EPDA
 - FAO
 - FIED
 - IYEC
 - MINADER SW
 - Reach Out

Cadre Harmonise
March 2021
(Mar-May)

- Minimal
- Under Pressure
- Crisis
- Emergency
- Famine

XX% = Gap percentage

Beneficiaries Assisted

Beneficiaries NOT Assisted

The FSC response is coordinated by Food and Agriculture Organization (FAO) and World Food Programme (WFP) with NRC.

Disclaimer: This dashboard captures information available at the moment of production based on partners' reporting.

Production date: 14-November-2021
Data sources: FSC 5Ws data for October 2021 /FSC Partners, Cadre Harmonise.

Contact: NWSW Cameroon Food Security Cluster
Info.cameroon@fsccluster.org