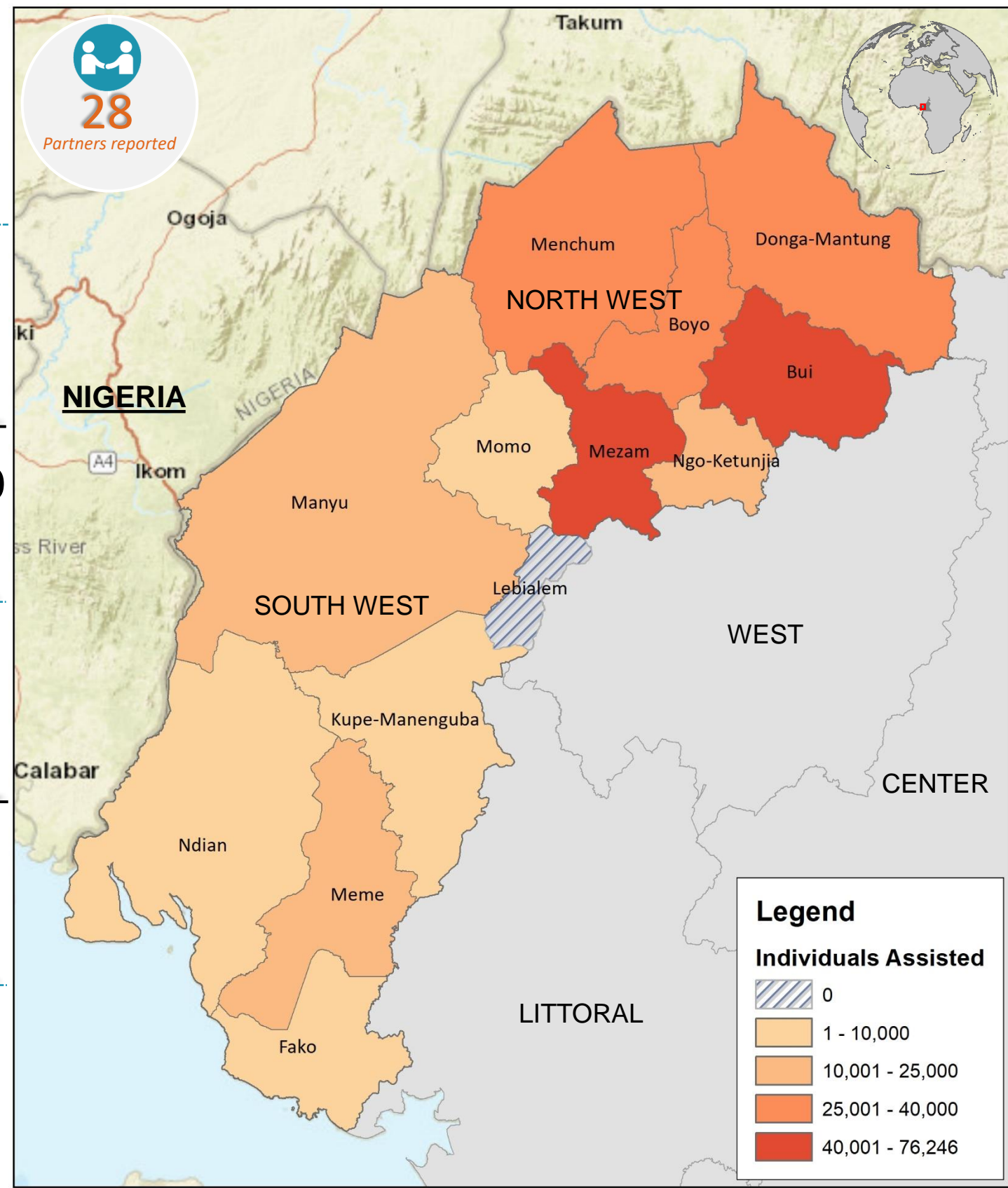
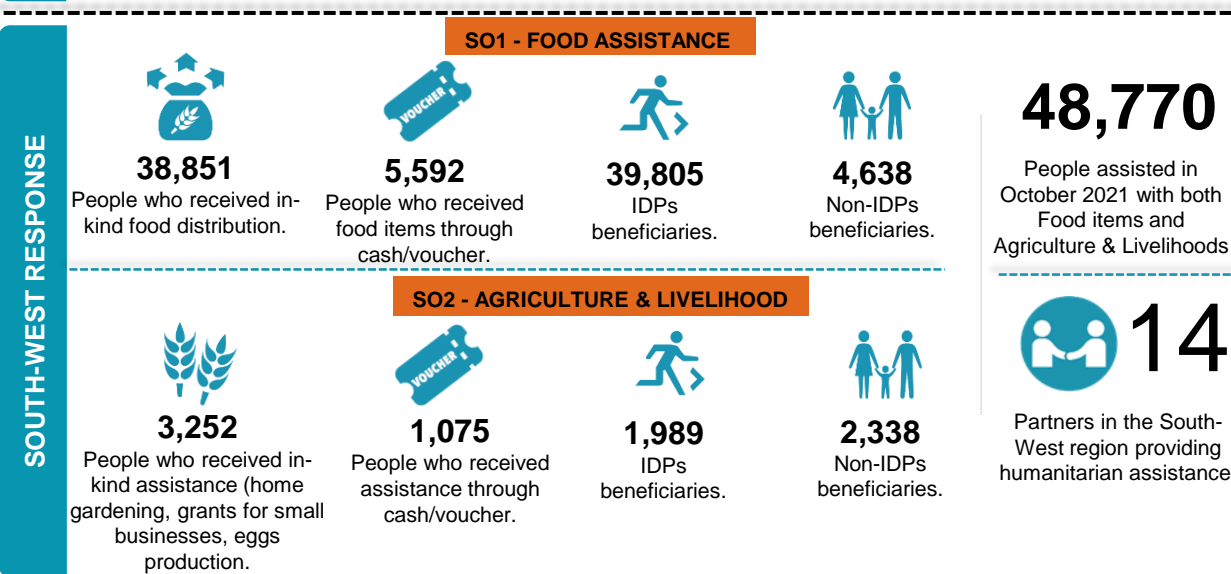


As of October, 28 partners collectively reached 297,999 people with emergency food, agriculture, and livelihoods humanitarian assistance. This means a 69 percent gap is recorded based on the People in Need (HRP 2021). Out of the total beneficiaries, about 92 percent of them received food assistance and only 10 percent of the total beneficiaries received assistance through cash and voucher modalities. Despite the challenges to access communities due to lockdowns and traffic bans by NSAG, WFP continues in its efforts to serve the most vulnerable people by targeting IDPs and people living with disabilities. In collaboration with MINADER South-West, FAO distributed 15 tons of fertilizer, 7500 improved seeds and 450 bags of manure to 300 beneficiary households and trained farmers' field school facilitators. The cluster released a new interactive dashboard to help partners to get more insight of operational presence (5W).



The FSC response is coordinated by Food and Agriculture Organization (FAO) and World Food Programme (WFP) with NRC.
* means unique people without double counts

The boundaries and names shown and the designations used on this map do not imply official endorsement or acceptance by the UN.

Disclaimer: This dashboard captures information available at the moment of production based on partners' reporting.

Production date: 14-November-2021
Data sources: FSC 5Ws data for October 2021 /FSC Partners and Cadre Harmonise.

Contact: NWSW Cameroon Food Security Cluster
info.cameroon@fscluster.org