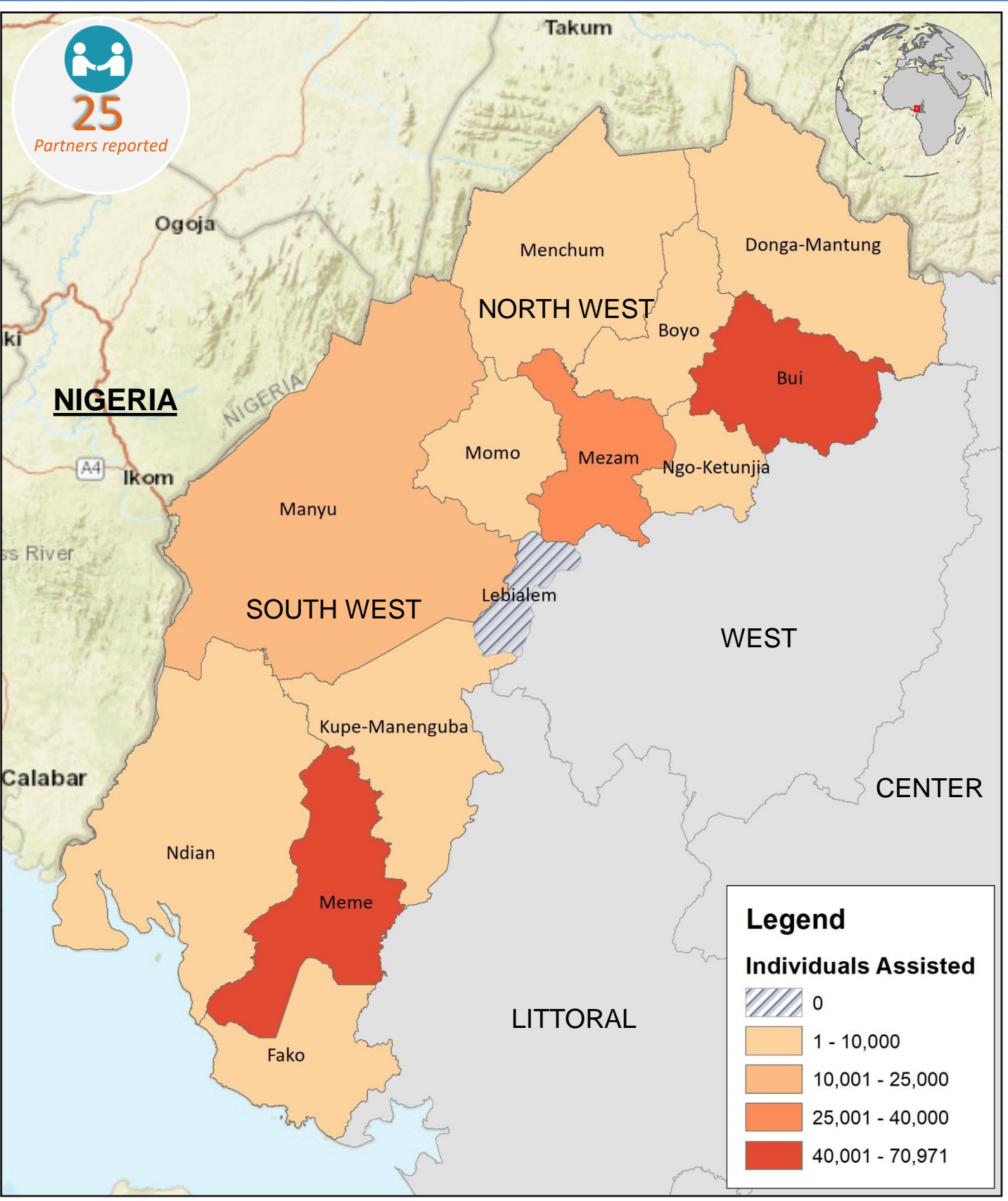
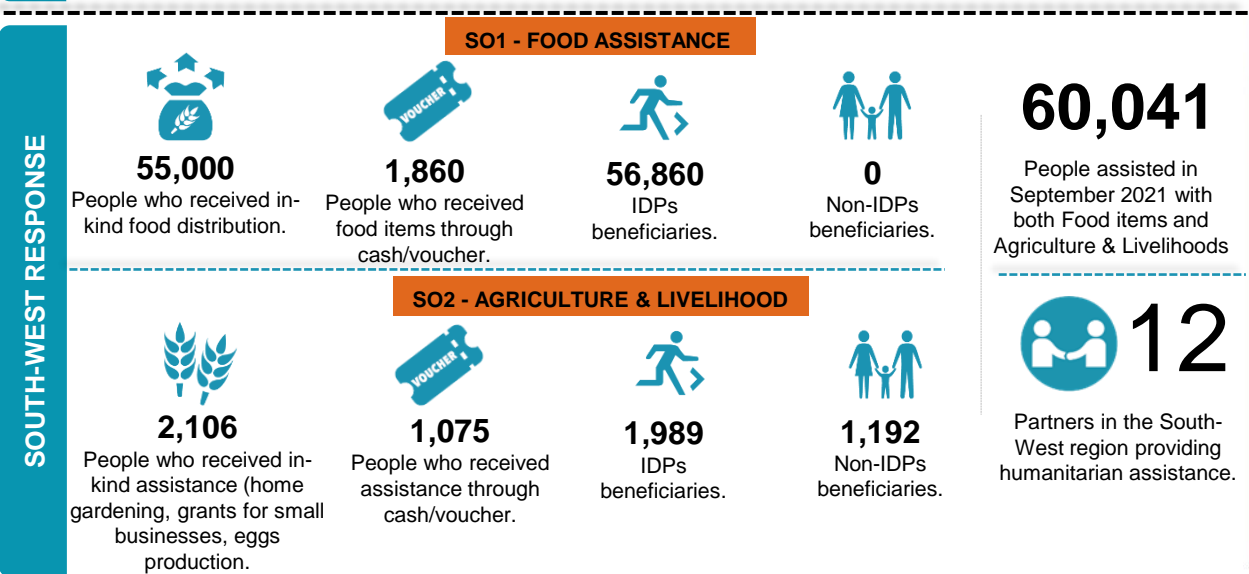
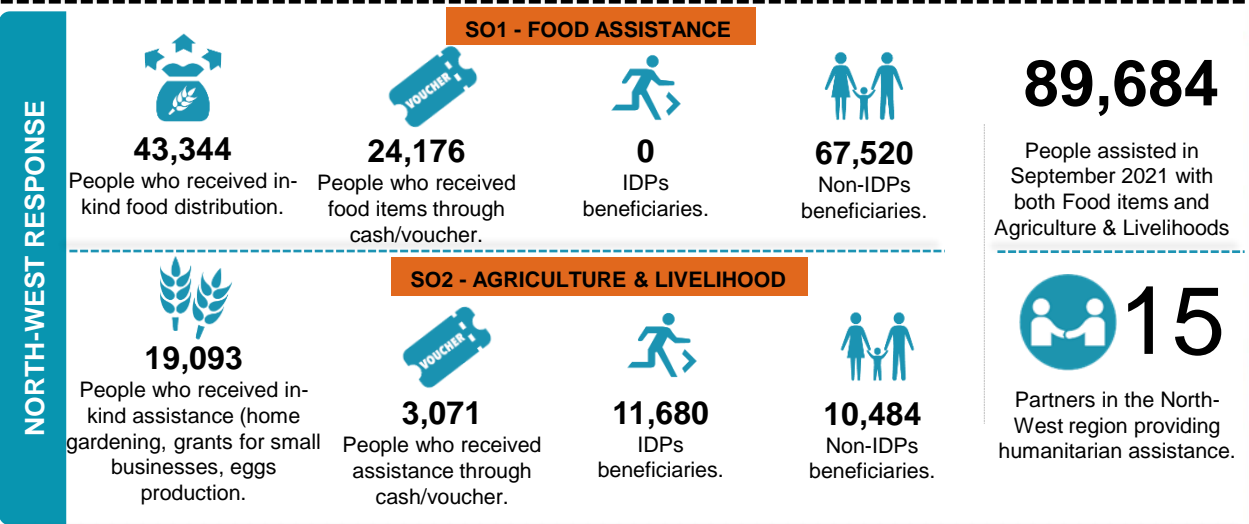
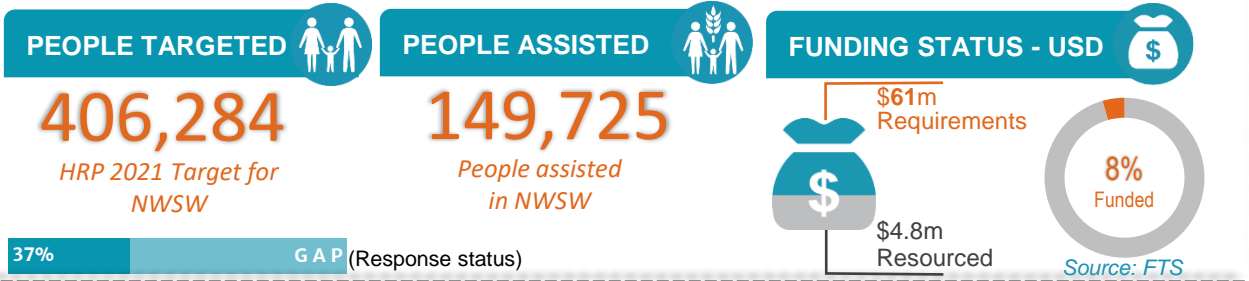


As of September, 25 partners collectively assisted 149,725 people with emergency food, agriculture, and livelihoods humanitarian assistance, this represents a 48 percent downward trend as compared with the achievement in August 2021. Out of the total beneficiaries, 30,000 people received assistance through cash and voucher modalities. The imposed lockdown across the NWSW regions in September left about 170,000 of our usual monthly beneficiaries (mainly in the NW region) without receiving any form of assistance as roads, markets and other commercial activities were closed. WFP SW assisted 55,000 people of its 80,000-beneficiary caseload through double rations in August. As part of the cluster's capacity building strategy, 2 National NGO staff have been selected to attend the Cadre Harmonise workshop scheduled to hold from 18th-24th October 2021 in Mbankomo, the results will guide our planning for the upcoming HNO/NRP 2022.



The FSC response is coordinated by Food and Agriculture Organization (FAO) and World Food Programme (WFP) with NRC.

The boundaries and names shown and the designations used on this map do not imply official endorsement or acceptance by the UN.

**Disclaimer:** This dashboard captures information available at the moment of production based on partners' reporting.

Production date: 13-October-2021  
Data sources: FSC 5Ws data for September 2021 /FSC Partners and Cadre Harmonise.

Contact: NWSW Cameroon Food Security Cluster  
[info.cameroon@fscluster.org](mailto:info.cameroon@fscluster.org)