



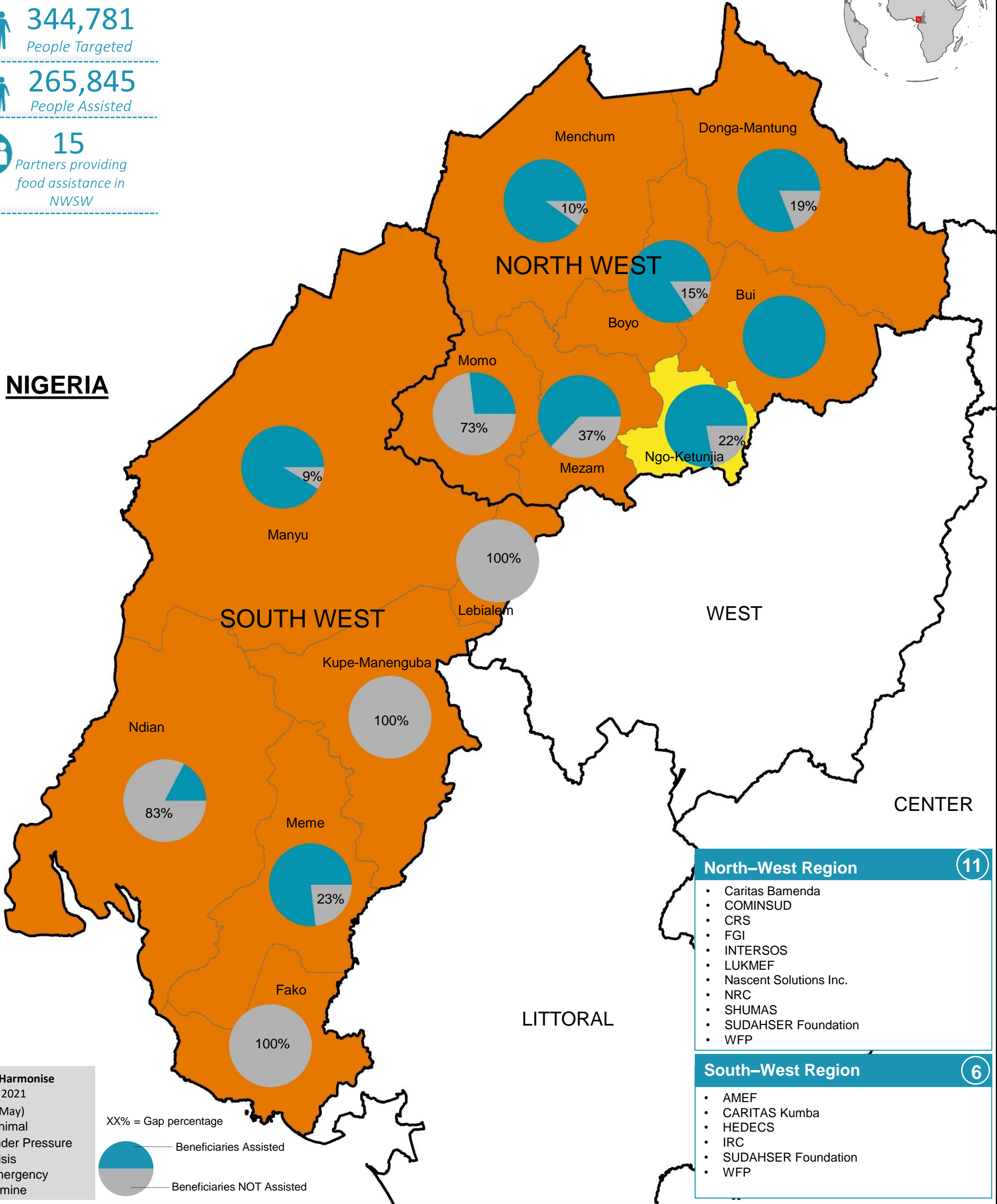
**959,803**  
People in Need

**344,781**  
People Targeted

**265,845**  
People Assisted

**15**  
Partners providing food assistance in NWSW

**NIGERIA**



**North-West Region** 11

- Caritas Bamenda
- COMINSUD
- CRS
- FGI
- INTERSOS
- LUKMEF
- Nascent Solutions Inc.
- NRC
- SHUMAS
- SUDAHSER Foundation
- WFP

**South-West Region** 6

- AMEF
- CARITAS Kumba
- HEDECS
- IRC
- SUDAHSER Foundation
- WFP

**Cadre Harmonise**  
March 2021  
(Mar-May)

- Minimal
- Under Pressure
- Crisis
- Emergency
- Famine

XX% = Gap percentage

Beneficiaries Assisted

Beneficiaries NOT Assisted

The FSC response is coordinated by Food and Agriculture Organization (FAO) and World Food Programme (WFP) with NRC.

**Disclaimer:** This dashboard captures information available at the moment of production based on partners' reporting.

Production date: 14-September-2021  
Data sources: FSC 5Ws data for August 2021 /FSC Partners, Cadre Harmonise.

Contact: NWSW Cameroon Food Security Cluster  
[Info.cameroon@fsccluster.org](mailto:Info.cameroon@fsccluster.org)



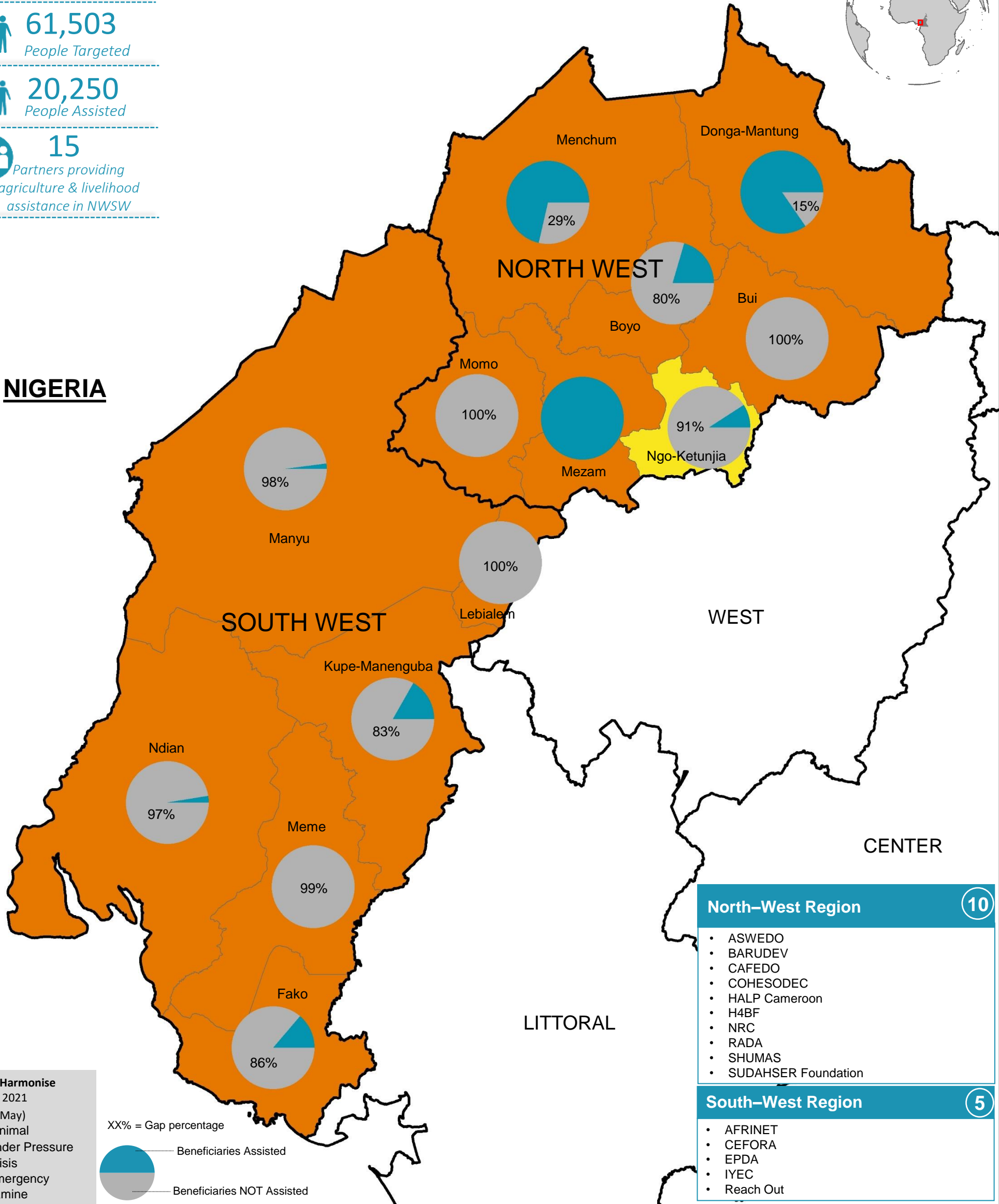
**959,803**  
People in Need

**61,503**  
People Targeted

**20,250**  
People Assisted

**15**  
Partners providing  
agriculture & livelihood  
assistance in NWSW

**NIGERIA**



- North-West Region** 10
- ASWEDO
  - BARUDEV
  - CAFEDO
  - COHESODEC
  - HALP Cameroon
  - H4BF
  - NRC
  - RADA
  - SHUMAS
  - SUDAHSER Foundation
- South-West Region** 5
- AFRINET
  - CEFORA
  - EPDA
  - IYEC
  - Reach Out

**Cadre Harmonise**  
March 2021  
(Mar-May)

- Minimal
- Under Pressure
- Crisis
- Emergency
- Famine

XX% = Gap percentage

Beneficiaries Assisted (Blue)

Beneficiaries NOT Assisted (Grey)