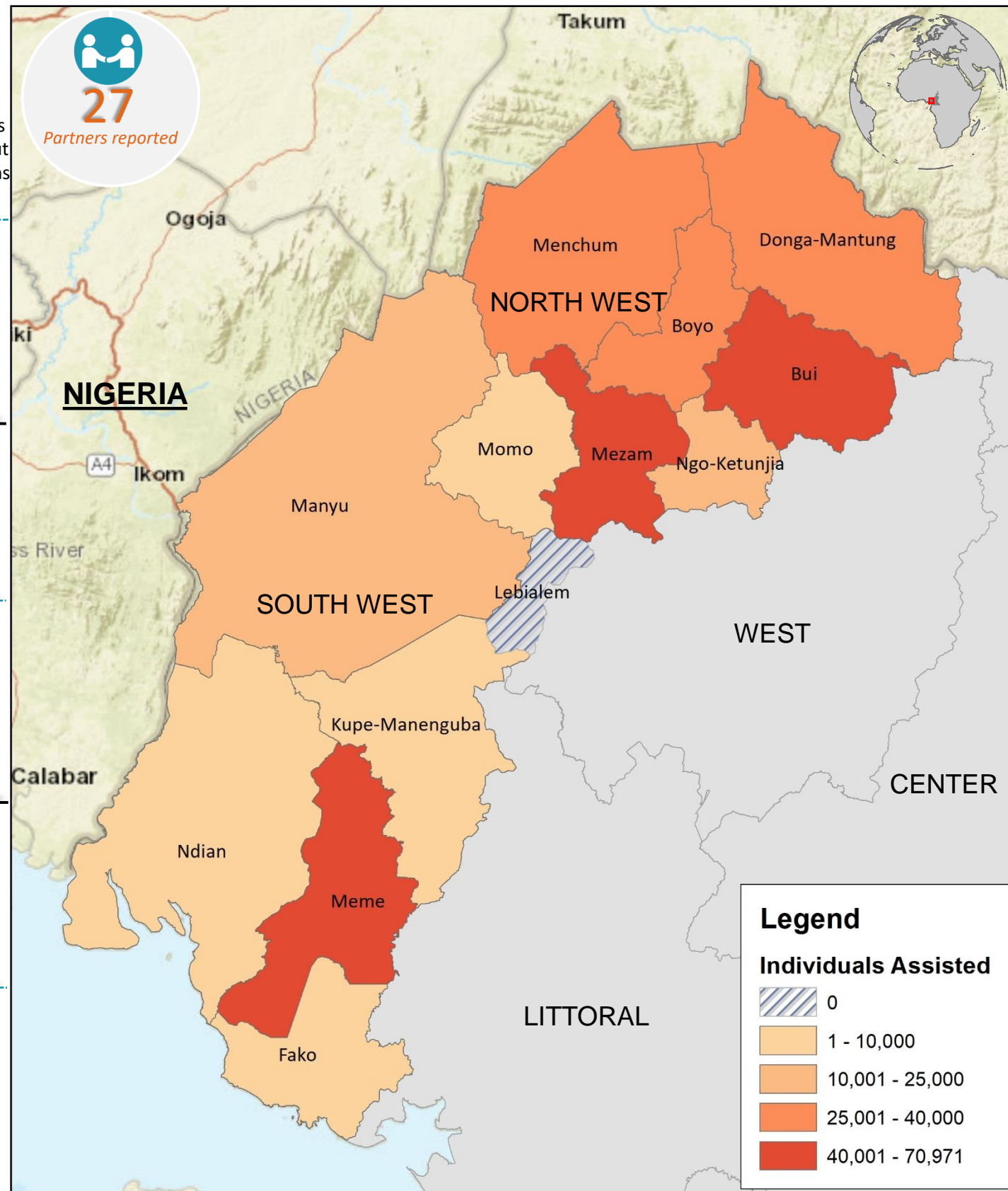
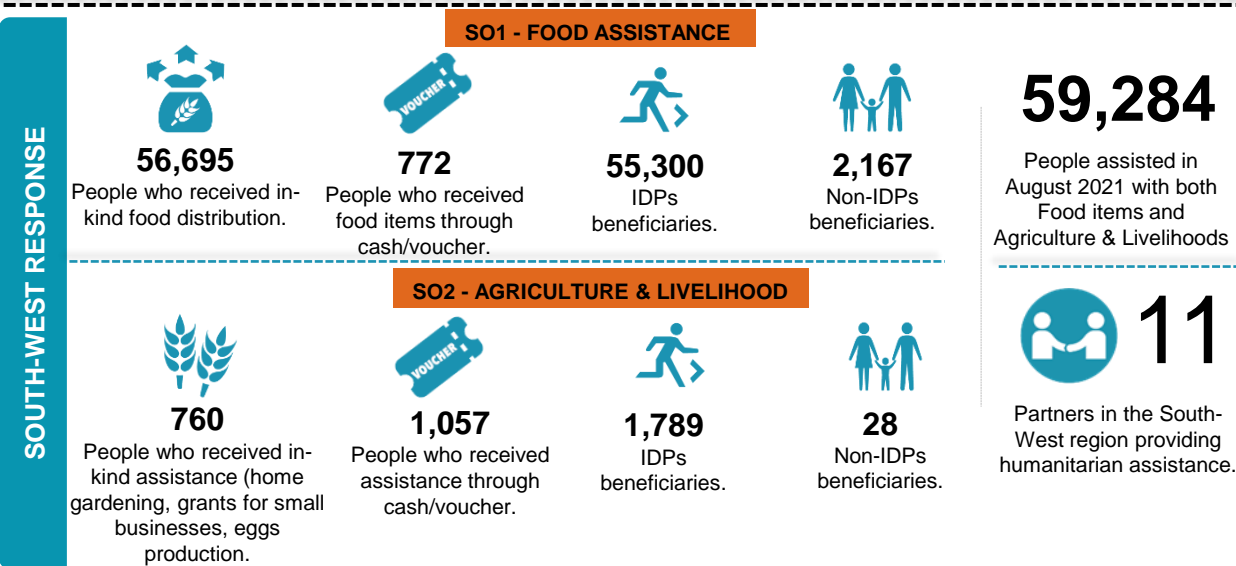
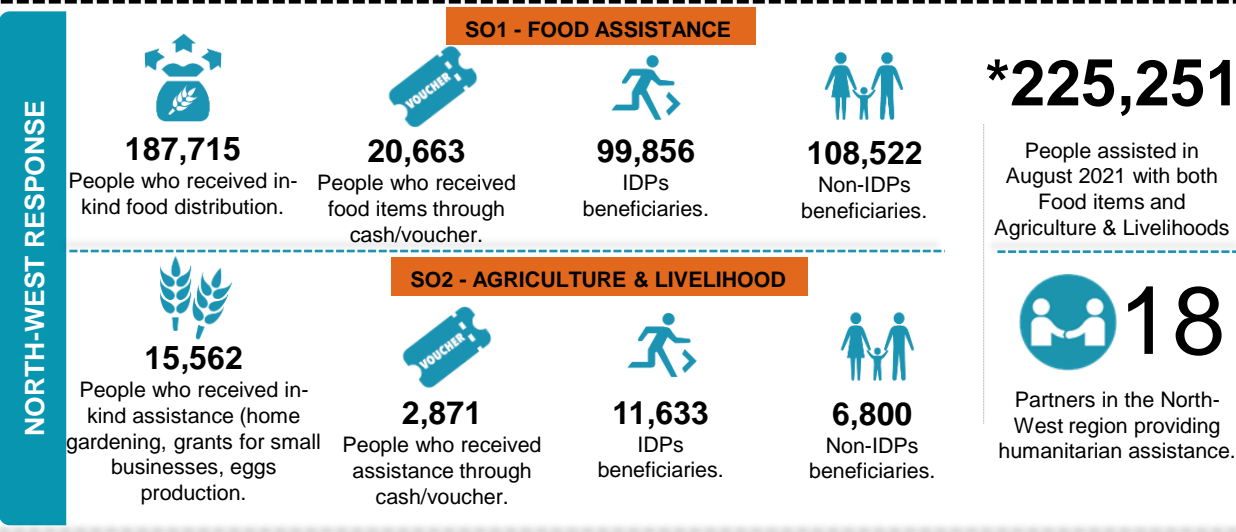


As of August, 27 partners collectively assisted 284,535 people with emergency food, agriculture, and livelihoods humanitarian assistance, this means a 70 percent gap is recorded based on the People in Need (HRP 2021). From the assisted beneficiaries, about 93 percent of them received food items and only 8 percent of the total beneficiaries received assistance through cash and voucher modalities. Unfortunately, over 40,000 people were denied humanitarian food assistance as the insecurity remains a challenge with some major access roads being blocked or seriously vulnerable like the one leading to Batibo and Bafut, this has obviously limited the movement of organizations thereby leaving some vulnerable communities without assistance in August. With technical support from GBV sub-cluster, the FSC trained 20 partner organizations in the South-West region on GBV mainstreaming in Food Security Programming.



The FSC response is coordinated by Food and Agriculture Organization (FAO) and World Food Programme (WFP) with NRC.

The boundaries and names shown on this map do not imply official endorsement or acceptance by the UN.

Disclaimer: This dashboard captures information available at the moment of production based on partners' reporting.

Production date: 14-Sept.-2021
Data sources: FSC 5Ws data for August 2021 /FSC Partners and Cadre Harmonise.

Contact: NWSW Cameroon Food Security Cluster
info.cameroon@fscluster.org

* means unique people without double counts