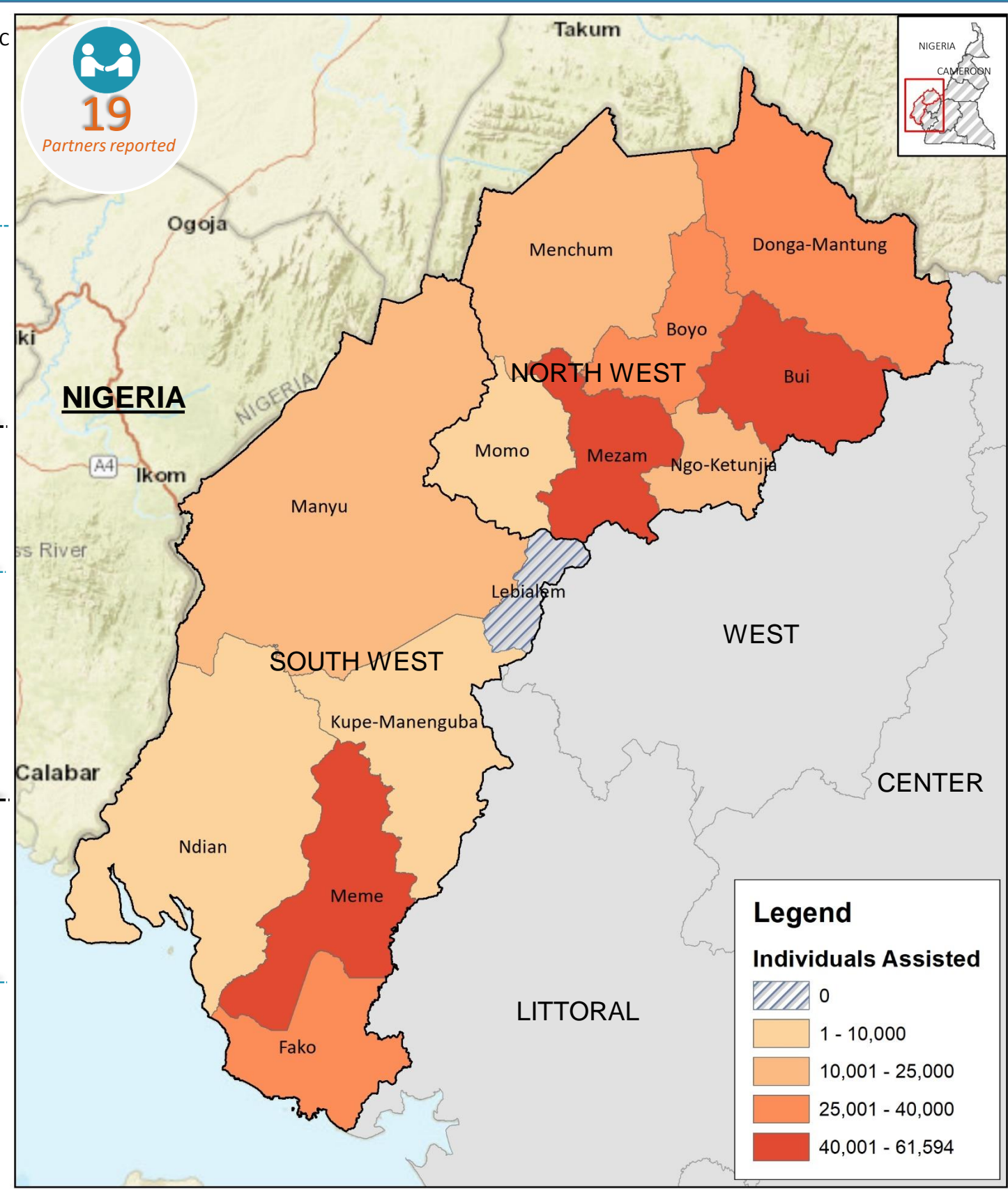
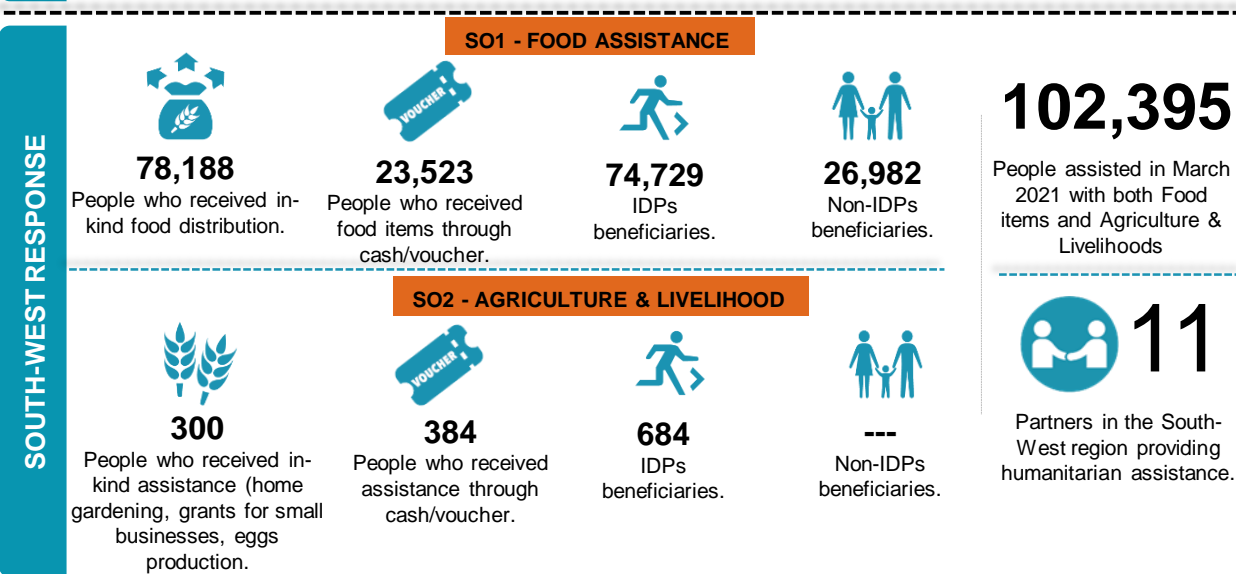


In the month of March, 19 partners collectively assisted 336,417 people with both food, agriculture and livelihoods assistance out of which only 13% received support through the cash/voucher modalities. The FSC response in March represents an increase of 28% as compared to the previous month however, the overall food security needs have increased as 1.15 million people are now estimated to be severely food insecure which represents an increase of 20% as compared to the previous analysis done in October 2020 (Cadre Harmonise March 2021). It is therefore important that keen attention be considered as more than 500 thousand people in need of food security assistance are not being targeted at all mainly due to funding constraints and this number is increasing while assets are lost due to the crisis leaving many to succumb to negative coping strategies for survival.



The FSC response is coordinated by Food and Agriculture Organization (FAO) and World Food Programme (WFP) with CRS.

The boundaries and names shown and the designations used on this map do not imply official endorsement or acceptance by the UN.

Disclaimer: This dashboard captures information available at the moment of production based on partners' reporting.

Production date: 12-April-2021
Data sources: FSC 5Ws data for March 2021 /FSC Partners and Cadre Harmonise.

Contact: NWSW Cameroon Food Security Cluster
info.cameroon@fscluster.org