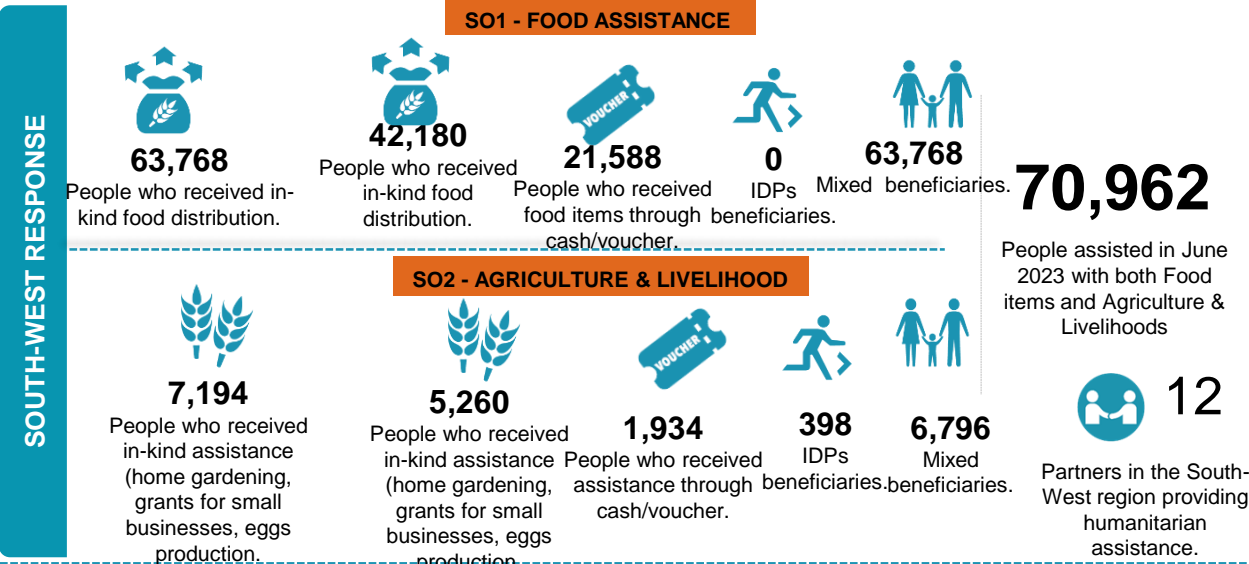
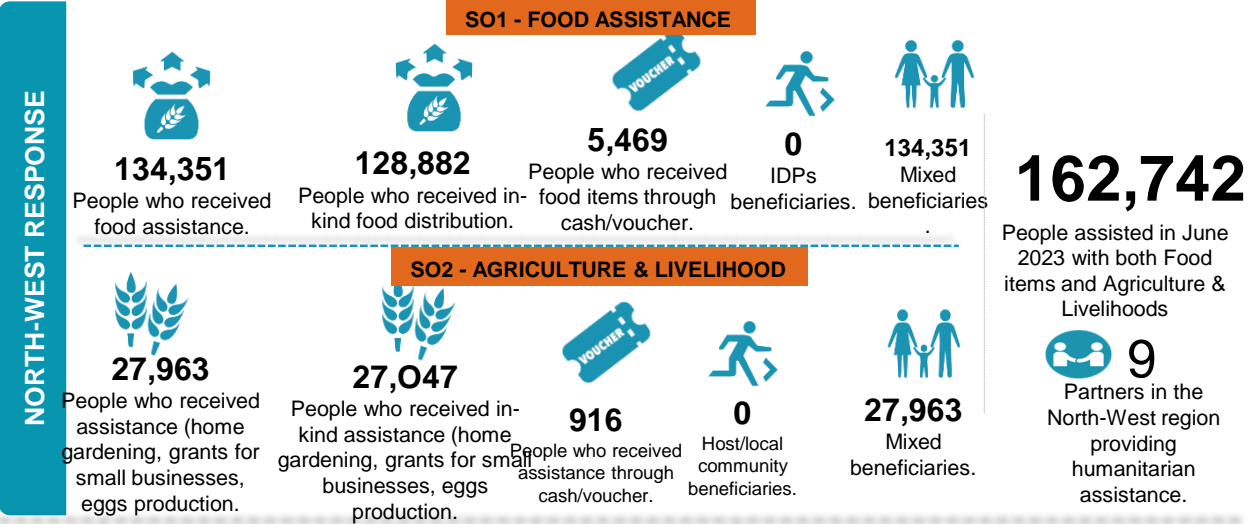
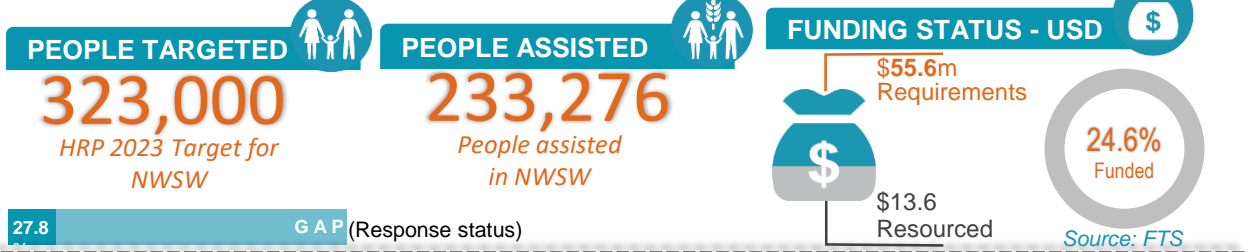


As of 31 September 2023, 18 partners provided food assistance, agriculture, and livelihood support to 233,276 vulnerable people in the NWSW. This represents 72% of the official HRP target of people targeted in 2023, which is 323,000, and 57% of the operational HRP target which is 408,078. Out of the total beneficiaries assisted, 15.1% were supported through agriculture and livelihood activities of market gardening, poultry farming, and establishment of fish farms, while 84.9% of beneficiaries received food assistance through in-kind and cash transfer modalities. In the Northwest region, WFP distributed a double ration (August and September) of 1,759.76 MT of in-kind food assistance to 111,689 beneficiaries; 32,840 male and 78,849 female, in Momo, Donga-Mantung, Bui, Mezam, Menchum, Ngoketunja, and Boyo divisions. The assistance was distributed through four cooperating partners, COMINSUD, Caritas Kumbo, SHUMAS, and INTERSOS. In addition, to the double distribution done in August, 122,212 beneficiaries who could not be reached in August were reached with 964.490 MT of mixed food commodities in September. Through unconditional cash transfers, WFP reached 5,469 beneficiaries in Mezam division. In the South-West region, WFP through in-kind food assistance, reached a new cohort of 42,180 beneficiaries; 21,343 female and 20,837 male, and distributed 261.649 MT of mixed food commodities in Meme and Manyu divisions. Distributions were conducted by Cooperating Partners, Caritas Kumba in the Meme division and Caritas Diocese of Mamfe in Manyu division. Through unconditional cash-based transfers, WFP reached 19,125 beneficiaries; 14,072 Females and 5,053 males, in Fako division (Tiko, Buea, & Limbe sub-divisions) and in Meme division (Kumba 1, 2, & 3). FAO in collaboration with its implementing partners (CEFORA for the Southwest) Monitored the distribution of input and construction of 150 mini poultry units in Meme; monitored the distribution of inputs and land preparation of 250 market gardening plots in Meme and monitored the distribution of inputs and construction of 100 mushroom production units in Meme. FAO in collaboration with its implementing partners (CEFORA for the Southwest) Monitored the distribution of input and construction of 150 mini poultry units in Meme; monitored the distribution of inputs and land preparation of 250 market gardening plots in Meme and monitored the distribution of inputs and construction of 100 mushroom production units in Meme.



The FSC response is coordinated by Food and Agriculture Organization (FAO) and World Food Programme (WFP) with NRC.

The boundaries and names shown on this map do not imply official endorsement or acceptance by the UN.

**Disclaimer:** This dashboard captures information available at the moment of production based on partners' reporting.

Production date: 29-10-2023  
Data sources: FSC 5Ws data for September 2023 /FSC Partners and Cadre Harmonise.

Contact: NWSW Cameroon Food Security Cluster  
[info.cameroon@fscluster.org](mailto:info.cameroon@fscluster.org)