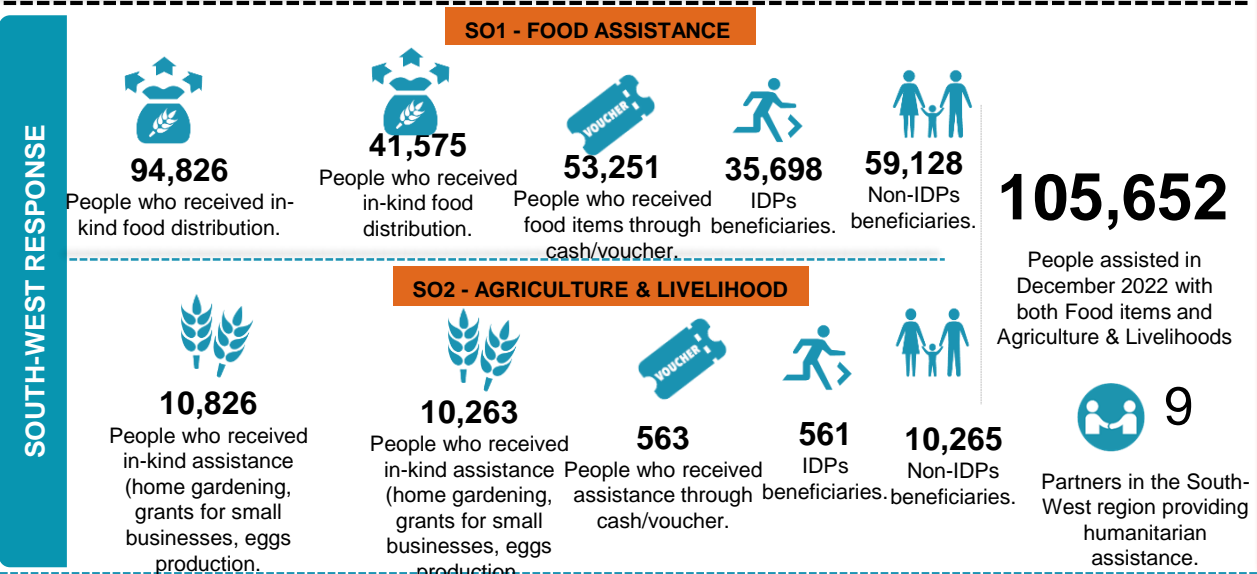
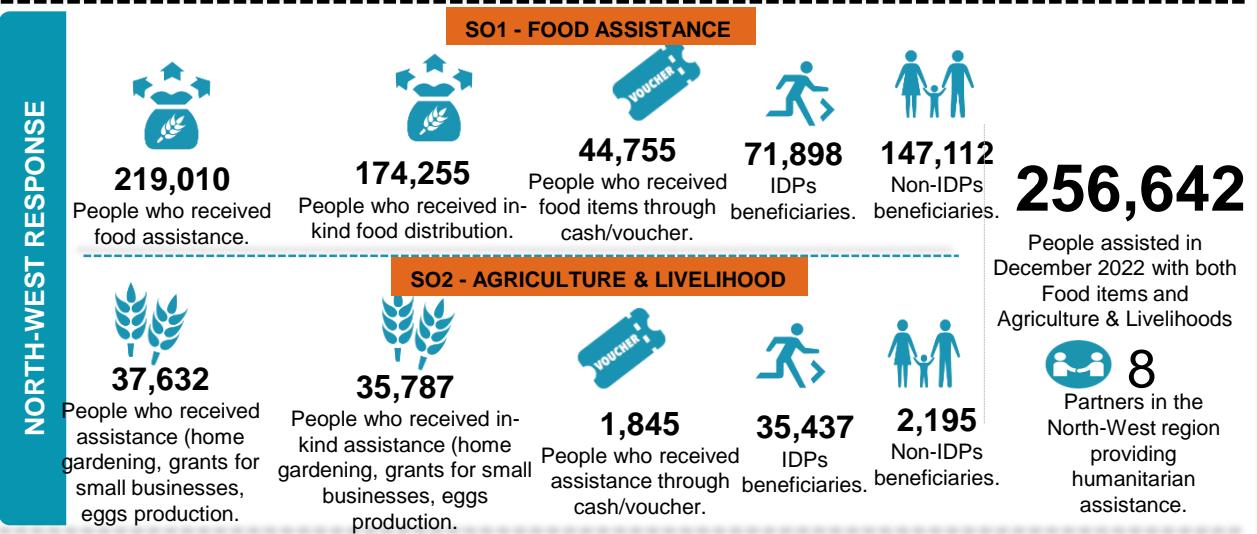
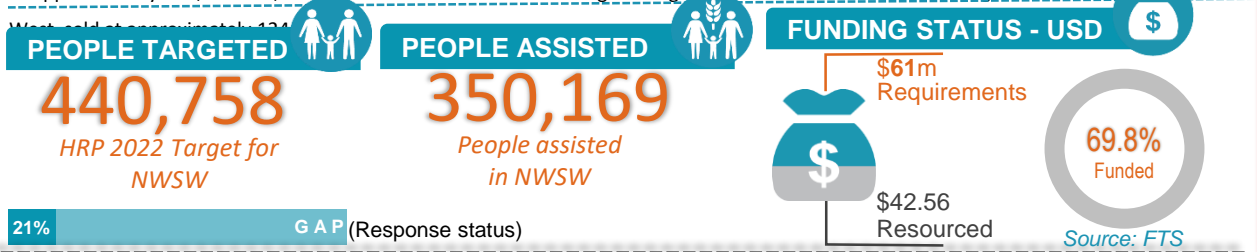


As of December, 18 partners collectively assisted 350,169 people with emergency food, agriculture, and livelihoods humanitarian assistance.

This means a 70 percent gap was recorded based on the PiN (HRP 2022) and 21% gap based on HRP 2022 target. Out of the total beneficiaries, about 87 percent of them received food items/assistance and only 15 percent of the total beneficiaries received assistance through through agriculture and livelihood activities like market gardening, poultry, fish farms, and IGAs. Using In-kind food, WFP assisted 41,275 beneficiaries with 662.464 MT(double distribution done in November covering November and December) of mixed commodities in Meme and Manyu divisions in the South West and 174,255 beneficiaries with 1,396 MT through in-kind modality in Bui, Mezam, Momo, Menchum, Ngoketunjia, Donga Mantung and Boyo divisions in the North West Region. For cash modality, 31,782 beneficiaries were reached in SW and 26,702 in NW. FAO continued monitoring of 100 mini poultry production units and a total of 27,439 eggs harvested and sold for 182,927 XAF, monitored 40 established PwDs (Person with disabilities) fish production units and a total of 145kg of fish harvested in the North West and South West, sold at approximately 435,000 XAF, Monitored 30 established PwDs vegetable gardens with total harvest of 147 kg in the North West and South West.



The FSC response is coordinated by Food and Agriculture Organization (FAO) and World Food Programme (WFP) with NRC.

The boundaries and names shown on this map do not imply official endorsement or acceptance by the UN.

Disclaimer: This dashboard captures information available at the moment of production based on partners' reporting.

Production date: 28-01-2023
Data sources: FSC 5Ws data for December 2022 /FSC Partners and Cadre Harmonise.

Contact: NWSW Cameroon Food Security Cluster
info.cameroon@fscluster.org