

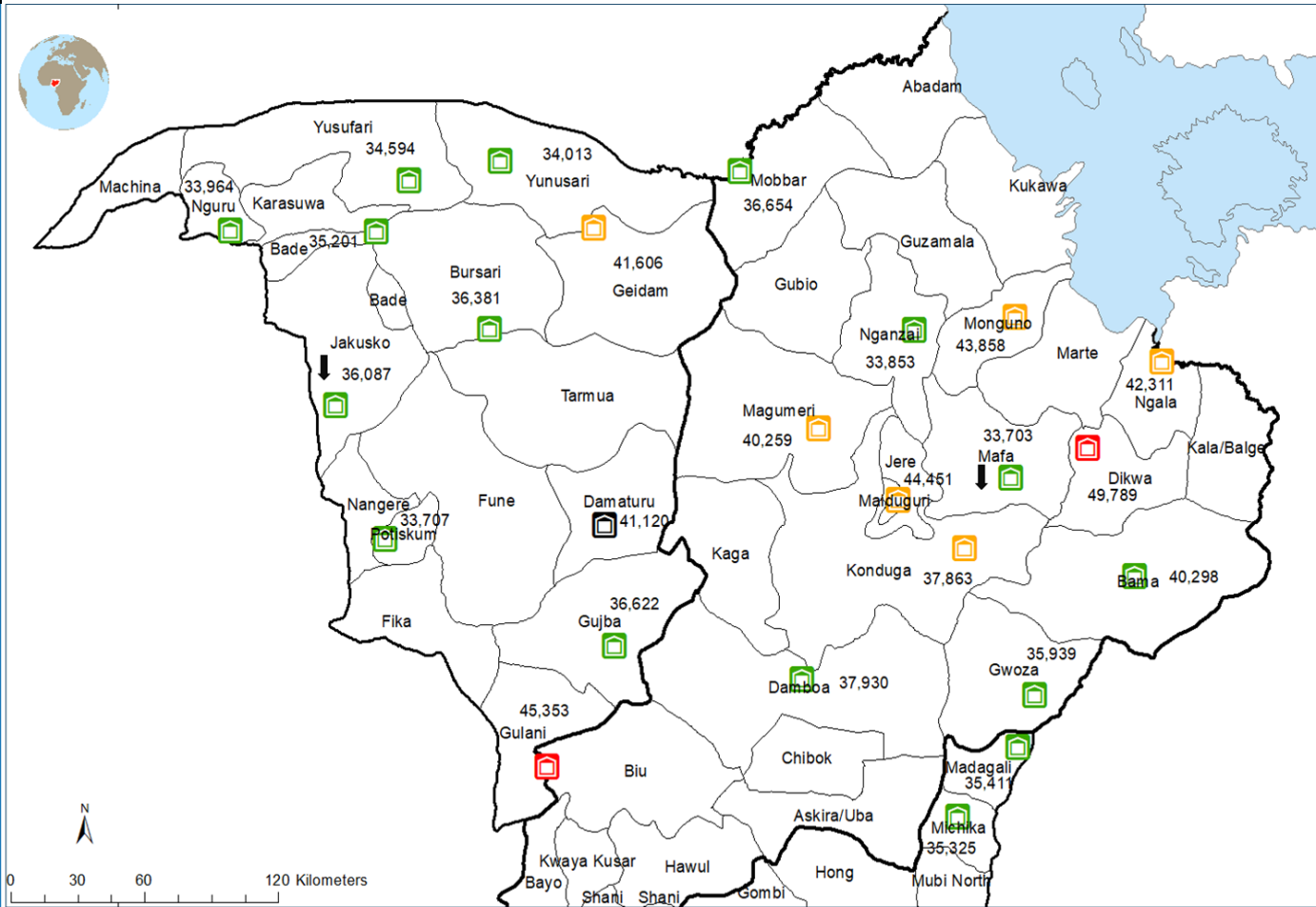
NIGERIA

Borno and Yobe States Market Monitoring SEPTEMBER 2022-ISSUE 64

Highlights

- The prices of food and non-food commodities continue to rise steeply as the naira depreciated further at the black market at N745/\$1 on Friday, 30th of September 2022. The drop in forex supply contributed to the downtrend in the value of the local currency at the official market.
- Prices of staple foods such as rice, beans, and groundnut in Borno and Yobe states in September 2022 were stable against relative increases in August. This relative stability is observed rather against the background of substantial year-on-year increases in staple food prices in both states, in particular, local rice and groundnut increased by 19 and 15 percent in MMC/Jere and 25 and 88 percent in Damaturu markets as households' stock level and market supply continue to deteriorate.
- The cost of **70 percent Survival Minimum Expenditure Basket (SMEB)** for a family of five in Maiduguri and Jere in Borno State increased by 4 percent from 29,851 naira in August to 31,116 naira in September. While the Damaturu SMEB marginally increased by 5 percent from 27,439 naira to 28,784 naira same period. Refer to page 3 for SMEB values in other BAY states locations.

SMEB (100%) per Market Location in BAY States September 2022



SMEB Prices and Market Locations in BAY States

 Reference SMEB (N41,120)
 Marginally Higher than the Reference (1% - 10%)
 State Boundary
 Below Reference SMEB (<N41,120)
 Substantially Higher than the Reference (>10%)
 LGAs Boundary
⇕ SMEB Substantial Increase or decrease (Current against Previous Month) (>10% or <10%)
 Lake

Data sources: WFP offices, WFP Boundaries, OCHA, Boko Haram/ISWAP Contributors, Population atlas, GIS software

The designations employed and the presentation of material in this map do not imply the expression of any opinion on the part of WFP concerning the legal or constitutional status of any country, territory, city or area, or concerning the delimitation of its frontiers or boundaries.

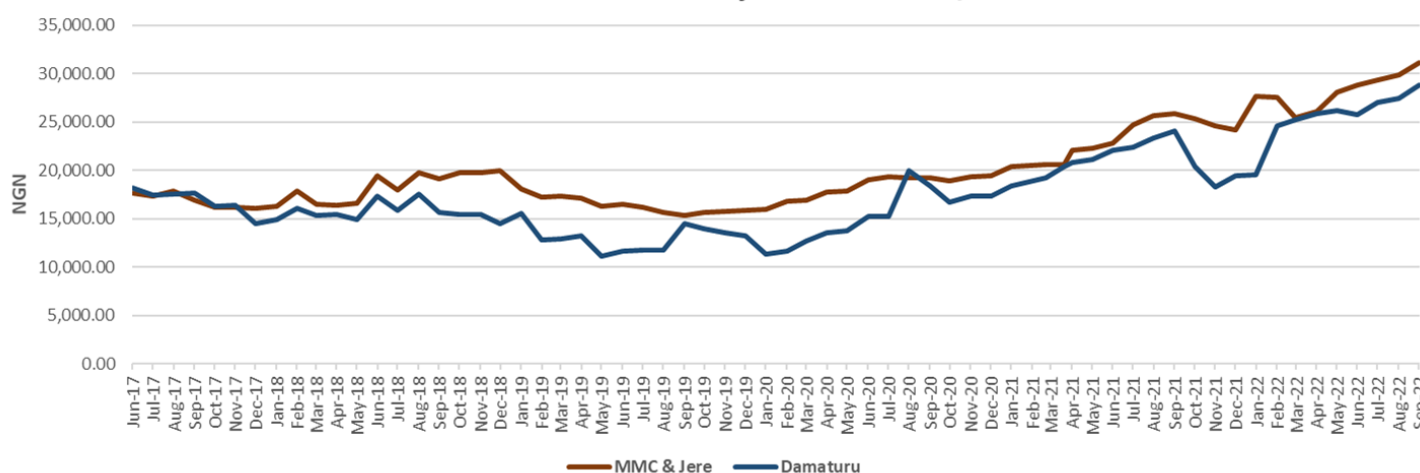
Table 1: Transfer value calculated for 5 household members in Maiduguri and Jere markets for one month without the N2,000 for the NFIs

HOUSEHOLD SIZE			5				
Food Item	gms/day/pp	Kc/day/pp	gms/HH/day	gms/HH/month	kg/HH/month	Price/kg-Naira (MPM)	Price/HH/month - Naira
Rice	150	540	750	22,500	22.50	658	14,805
Maize	250	913	1250	37,500	37.50	337	12,638
Beans	75	255	375	11,250	11.25	658	7,403
Palm oil	10	88	50	1,500	1.50	1228	1,841
Groundnut	15	85	75	2,250	2.25	837	1,883
Sugar	10	39	50	1,500	1.50	791	1,187
G/nut oil/Veg Oil	20	177	100	3,000	3.00	1305	3,915
Salt	5	0	25	750	0.75	371	278
Onion	8	3	40	1,200	1.20	418	501
Total		2,100					N 44,450.68
Cost food basket at 70%		1,470					N 31,115.48
Per capita based on 70% transfer value							N 6,223.10

Table 2: Transfer value calculated for 5 household members in Damaturu markets for one month without the N2,000 for the NFIs

HOUSEHOLD SIZE			5				
Food Item	gms/day/pp	Kc/day/pp	gms/HH/day	gms/HH/month	kg/HH/month	Price/kg-Naira (MPM)	Price/HH/month - Naira
Rice	150	540	750	22,500	22.50	603	13,560
Maize	250	913	1250	37,500	37.50	280	10,500
Beans	75	255	375	11,250	11.25	670	7,538
Palm oil	10	88	50	1,500	1.50	1270	1,905
Groundnut	15	85	75	2,250	2.25	852	1,918
Sugar	10	39	50	1,500	1.50	800	1,200
G/nut oil/Veg Oil	20	177	100	3,000	3.00	1350	4,050
Salt	5	0	25	750	0.75	200	150
Onion	8	3	40	1,200	1.20	250	300
Total		2,100					N 41,120.38
Cost food basket at 70%		1,470					N 28,784.27
Per capita based on 70% transfer value							N 5,756.85

Trend in the cost of 70% SMEB MMC/Jere and Damaturu



September 2022 70% SMEB Comparison

	Current	MoM	YoY	Same time 5 years ago	5 years average
	Sep-22	Aug-22	Sep-21	Sep-17	5 years average
SMEB values					
MMC/Jere	31,115	29,852	25,839	16,919	19,304
Damaturu	28,784	27,439	24,032	17,614	18,046
Percentage Change					
MMC/Jere		4	20	84	61
Damaturu		5	20	63	60

The cost of SMEBs in September is significantly high when compared to the previous year, the same period 5 years ago, and 5 years average as shown in the above table. The impact of these increases will further deplete the purchasing power of households in these LGAs.

SMEB in Other LGAs in Borno, Yobe, and Adamawa markets

The markets monitored were 2 in Adamawa state, 11 in Yobe state, and 19 markets in Borno state (including 8 markets in MMC and Jere) making a total of 32 markets. See the SMEB values in all LGAs where WFP is operational.

SURVIVAL MINIMUM EXPENDITURE BASKET (SMEB) ACROSS WFP OPERATIONAL AREAS IN BAY STATES SEPTEMBER 2022

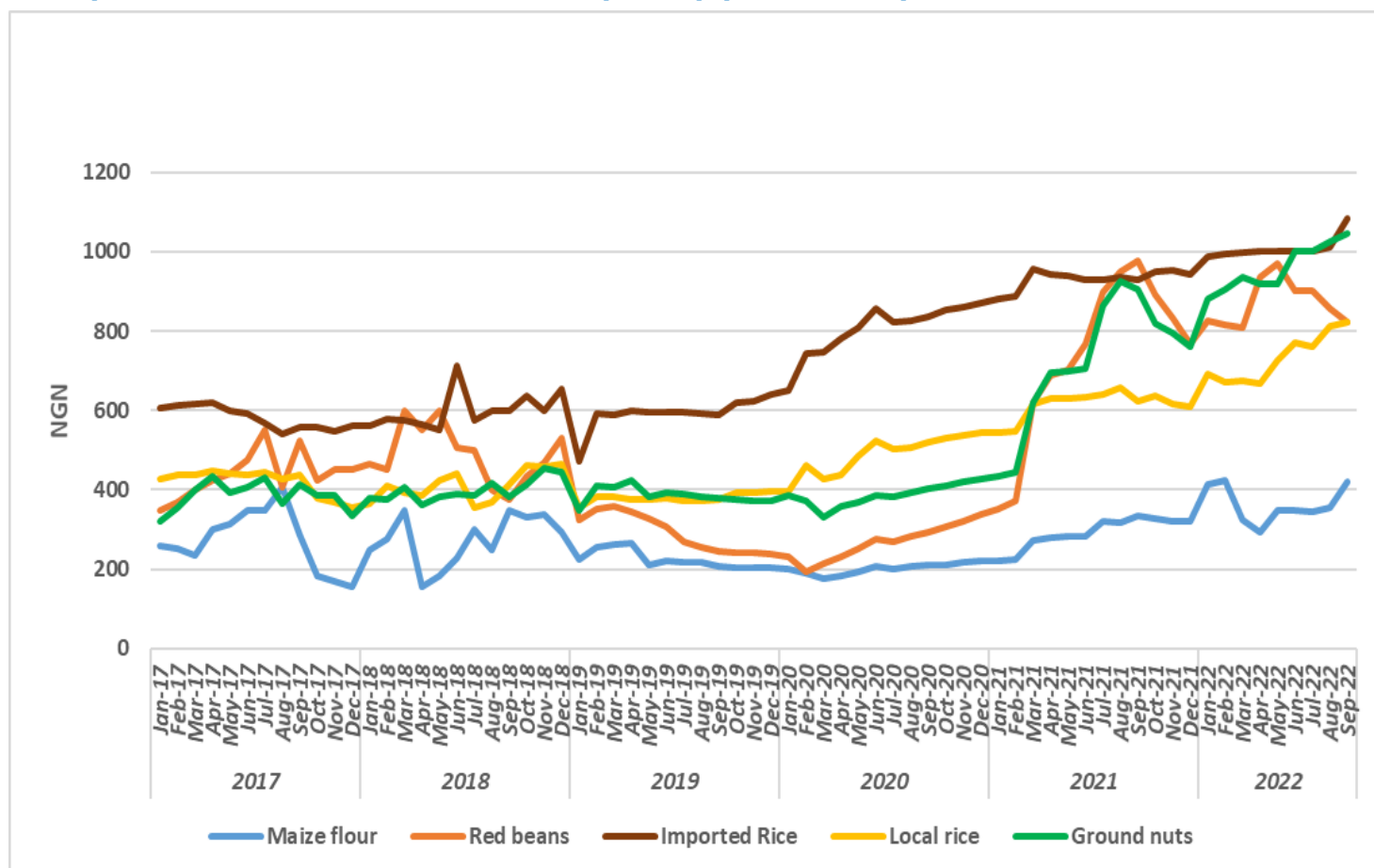
State	LGA	Ward	Reference Market where data was collected from	100% TOTAL Food MEB for HH size 5	100% Per capita HH size 5	70% TOTAL Food MEB for HH size 5	70% Per capita HH size 5
Borno	MMC&Jere			44,451	8,890	31,115	6,223
Borno	Bama	Kasugula	Bama	40,298	8,060	28,208	5,642
Borno	Damboa	Damboa	Damboa Market	37,930	7,586	26,551	5,310
Borno	Dikwa	Dikwa	Dikwa Central	49,789	9,958	34,852	6,970
Borno	Gwoza	Gwoza	Gwoza Centra	36,949	7,390	25,865	5,173
Borno	Konduga	Konduga	Konduga Market	37,863	7,573	26,504	5,301
Borno	Mafa	Mafa	Mafa Tasha	33,703	6,741	23,592	4,718
Borno	Magumeri	Magumeri	Magumeri Central	40,259	8,052	28,181	5,636
Borno	Mobbar	Damasak	Damasak Central	36,654	7,331	25,658	5,132
Borno	Mungonu	Monguno	Monguno main	43,858	8,772	30,701	6,140
Borno	Ngala	Ngala	Ngala market	42,311	8,462	29,618	5,924
Borno	Nganzai	Gajiram	Gajiram market	33,853	6,771	23,697	4,739
Yobe	Damaturu	Nayinawa	Damaturu Sunday Market	41,120	8,224	28,784	5,757
Yobe	Bade	Sarkin Hausawa	Gashua Market	35,201	7,040	24,641	4,928
Yobe	Bursari	Bayamari	Dapchi Maket	36,381	7,276	25,467	5,093
Yobe	Geidam	Hausari	Geidam Central Market	41,606	8,321	29,124	5,825
Yobe	Gujba	Buniyadi North / South	Buni Yadi Market	36,622	7,324	25,635	5,127
Yobe	Gulani	Borno Kiji/Tetteba	Tetaba Market	45,353	9,071	31,747	6,349
Yobe	Jakusko	Buduwa	Jakusko Market	36,087	7,217	25,261	5,052
Yobe	Nguru	Nguru	Nguru Central Market	33,964	6,793	23,775	4,755
Yobe	Potiskum	Bolewa 'A'	Potiskum Grains Market	33,707	6,741	23,595	4,719
Yobe	Yunusari	Mairari	Yunusari Market	34,013	6,803	23,809	4,762
Yobe	Yusufari	Yusufari	Yusufari central market	34,594	6,919	24,216	4,843
Adamawa	Madagali	Madagali	Madagali Market	35,411	7,082	24,788	4,958
Adamawa	Michika	Bazza Margi	Michika market	35,325	7,065	24,728	4,946

Key Staple Food Prices in MMC, Jere and Damaturu

The below table shows the percentage variations in September 2022 market prices compared to August 2022, May 2022 and September 2021 staple food prices in MMC/Jere location, Borno state. The chart shows the commodity price trends from 2017 to 2022.

Markets	Location	Variation % compared to last month	Variation % compared to 3 months	Variation % compared to same period last year	Markets	Location	Variation % compared to last month	Variation % compared to 3 months	Variation % compared to same period last year
MMC and Jere	Maize	19%	20%	26%	Damaturu	Maize	0%	-3%	-13%
	Red beans	-4%	-9%	-16%		Red beans	5%	20%	40%
	Rice (Imported)	7%	8%	17%		Rice (Imported)	0%	10%	33%
	Rice (Local)	1%	7%	32%		Rice (Local)	5%	21%	25%
	Groundnuts	2%	5%	15%		Groundnuts	8%	5%	88%
	Relative stability (-% to 3%)								
	Marginal increase (4% to 14%)								
	Substantial increase (15% and above)								

Key Food Price Trends for MMC & Jere (Borno) (2017–2022)



Contact: Uzowulu Beluolisa, VAM-Market, beluolisa.uzowulu@wfp.org

WFP Nigeria Research, Assessments and M&E unit, Nigeria.VAM@wfp.org

<https://dataviz.vam.wfp.org>