



NIGERIA

Borno and Yobe States Market Monitoring

March 2021-ISSUE 46

Highlights

- Prices of staple foods have generally increased in March 2021 as compared to the same period last year in many markets. Food supplies in the markets are lower and food prices are higher across most monitored markets.
- Underpinned by the insecurity and Nigeria's Dollar crunch, the continuing inflationary pressure on the food prices in the country to impact negatively on food security throughout northeast Nigeria, particularly as the lean season approaches and more households seasonally rely on markets for their food needs. The annual inflation in Nigeria reached 17.33 percent in February 2021.
- The cost of the 70 percent of the Survival Minimum Expenditure Basket (SMEB) for a family of five increased slightly from 20,650 Naira (February) to 20,657 Naira (March) in Maiduguri and Jere in Borno State. Similarly, In Damaturu, the SMEB increased by 6 percent from 19,194 Naira (February) to 20,376 Naira (March).

Markets	Location	Variation % compared to last month	Variation % compared to 3 months	Variation % compared to same period last year
MMC and Jere	Rice (Local)	↑ 13%	↑ 14%	↑ 44%
	Rice (Imported)	↑ 8%	→ 10%	↑ 28%
	Maize	↑ 22%	↑ 24%	↑ 56%
	Red beans	↑ 67%	↑ 84%	↑ 188%
	Groundnuts	↑ 40%	↑ 45%	↑ 87%
Damaturu	Rice (Local)	↑ 16%	↑ 22%	↑ 53%
	Rice (Imported)	→ 4%	→ 7%	↑ 26%
	Maize	↑ 20%	↑ 50%	↑ 140%
	Red beans	↓ -10%	↑ 29%	↑ 157%
	Groundnuts	↓ -20%	↓ -11%	↑ 33%

↑ Price increase above normal price fluctuation
 → Normal Price Fluctuation
 ↓ Price decrease below normal price fluctuation

Key Food Price Trends (2016–2021)

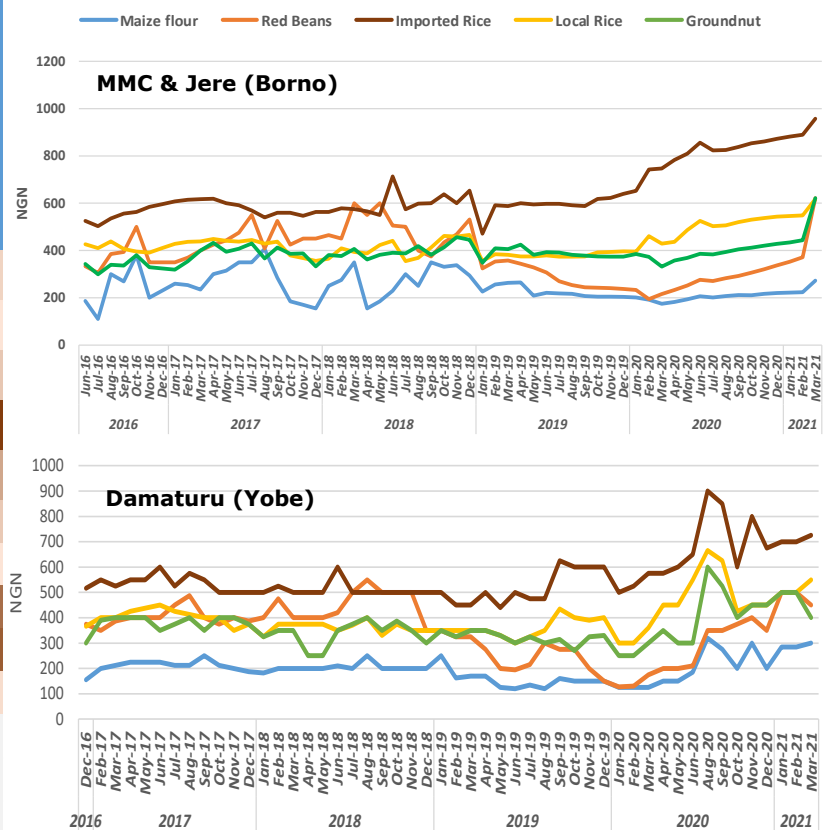


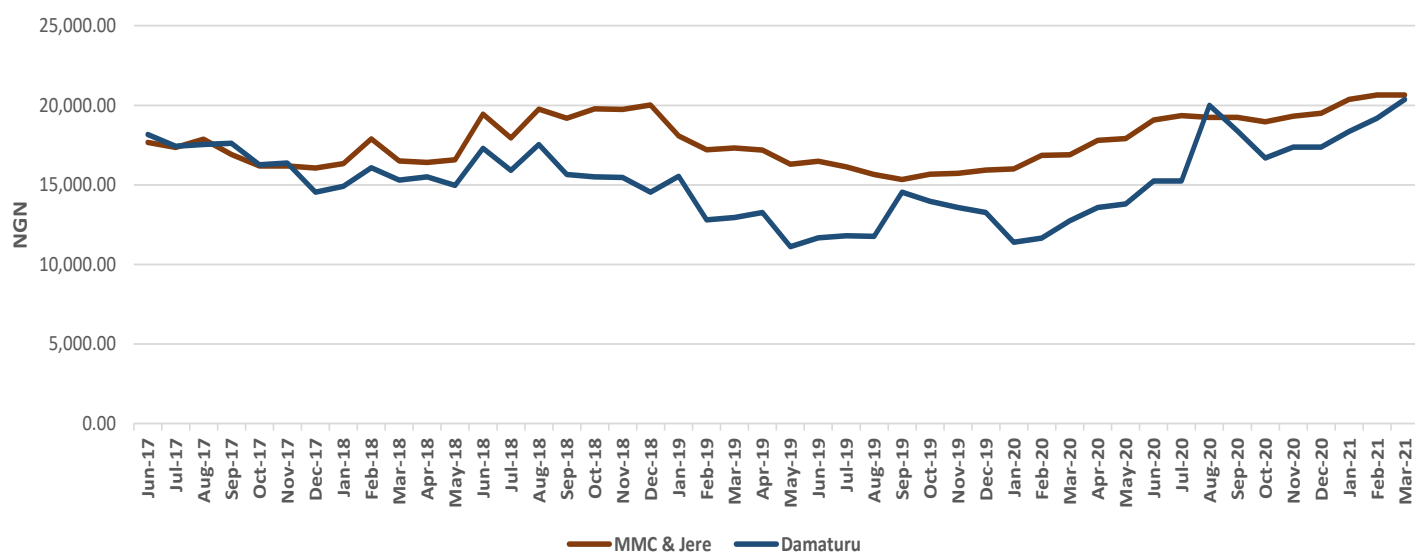
Table 1: Transfer value calculated for 5 household members in Maiduguri & Jere markets for one month

HOUSEHOLD SIZE			5				
Food Item	gms/day/pp	Kc/day/pp	gms/HH/day	gms/HH/month	kg/HH/month	Price/kg- Naira (MPM)	Price/HH/month (Naira)
Rice	150	540	750	22,500	22.50	458	10,298
Maize	250	913	1250	37,500	37.50	218	8,186
Beans	75	255	375	11,250	11.25	497	5,593
Palm oil	10	88	50	1,500	1.50	600	900
Groundnut	15	85	75	2,250	2.25	565	1,271
Sugar	10	39	50	1,500	1.50	606	909
G/nut oil/Veg Oil	20	177	100	3,000	3.00	610	1,830
Salt	5	0	25	750	0.75	298	224
Onion	8	3	40	1,200	1.20	250	300
Total		2,100					NGN 29,509.53
Cost food basket at 70%:	70%	1,470					NGN 20,656.67
Per capita based on 70% transfer value							NGN 4,131.33

Table 2: Transfer value calculated for 5 household members in Damaturu markets for one month

HOUSEHOLD SIZE			5				
Food Item	gms/day/pp	Kc/day/pp	gms/HH/day	gms/HH/month	kg/HH/month	Price/kg- Naira (MPM)	Price/HH/month (Naira)
Rice	150	540	750	22,500	22.50	518	11,655
Maize	250	913	1250	37,500	37.50	240	9,000
Beans	75	255	375	11,250	11.25	360	4,050
Palm oil	10	88	50	1,500	1.50	500	750
Groundnut	15	85	75	2,250	2.25	364	818
Sugar	10	39	50	1,500	1.50	600	900
G/nut oil/Veg Oil	20	177	100	3,000	3.00	550	1,650
Salt	5	0	25	750	0.75	180	135
Onion	8	3	40	1,200	1.20	125	150
Total		2,100					NGN 29,108.18
Cost food basket at 70%:	70%	1,470					NGN 20,375.73
Per capita based on 70% transfer value							NGN 4,075.15

Trend in the cost of SMEB






The slight increase in the SMEB stems from the increase in the price of red beans, groundnut, onions, cooking oil. The SMEB consists of key staples (rice, maize, beans, and groundnuts) which account for 85 percent of the food basket. SMEB tables and trends above apply to Maiduguri, Jere, and Damaturu only.

Staple commodity price changes in Borno and Yobe markets

Prices of red beans were observed to have increased significantly against the previous month and over 3 months. In March (2021) compared to December (2020) prices increased in Abbaganaram (44%), Kasuwan Shanu (76%), Custom and Budum (86%), Bullumkutu (94%), Baga road (98%), Tashan Bama (99%), and Monday (103%) markets in Borno State. Similarly, prices increased in Gulani (13%), Damaturu (29%), Gashua and Nguru (47%) Yusufari (50%), Yunusari (57%), Geidam (75%), Jakusko and Gujba (90%), Potiskum and Bursari (120%) markets in Yobe State.

Furthermore, the hike in prices of groundnuts in Bullumkutu (33%), Kasuwan Shanu (34%), Baga road (35%), Monday and Budum (36%), Abbaganaram (39%), Tashan Bama (74%), and Custom (85%) in Borno state, while in Potiskum (20%), Gashua, Geidam, and Nguru (22%), Jakusko (25%), Yunusari (29%), Gujba (36%), and Yusufari (38%) in Yobe State, might be attributed to the seasonality of the commodity, increase demand and reduced stock in markets as a result of production deficit.

Maiduguri Markets Monitoring Update						March 2021						
Market	Commodity	Current price	% Change in current price		Degree of change		Market	Current price	% Change in current price		Degree of change	
			1 Month	3 Months	1 Month	3 Months			1 Month	3 Months	1 Month	3 Months
Monday market	Peanuts (1.25 Kg)	600	33.3%	36.4%	↑	↑	Bullumkutu market	600	32%	33.3%	↑	↑
	Maize flour (1.25 Kg)	200	-4.8%	-4.8%	→	→		250	9%	11.1%	↑	↑
	Onion (Grams)	100	-16.7%	-16.7%	↓	↓		150	3%	7.1%	→	→
	Palm oil (Litre)	550	25.0%	34.1%	↑	↑		600	-2%	0.8%	→	→
	Red beans (1.25 Kg)	650	80.6%	103.1%	↑	↑		650	76%	94.0%	↑	↑
	Imported rice (1.25 Kg)	900	2.3%	3.4%	→	→		1000	8%	9.9%	↑	→
	Local rice (1.25 Kg)	600	7.1%	8.1%	↑	→		625	6%	5.0%	↑	→
	Vegetable oil (Litre)	550	25.0%	34.1%	↑	↑		650	4%	8.3%	→	→
	Sorghum (1.25 Kg)	260	23.8%	29.3%	↑	↑		275	17%	19.6%	↑	↑
Abba Ganaram	Peanuts (Kg)	625	35.7%	38.9%	↑	↑	Custom market	675	73%	85%	↑	↑
	Maize flour (Kg)	210	-2.3%	-2.1%	→	→		400	67%	82%	↑	↑
	Onion (Grams)	100	-13.4%	-16.7%	↓	↓		100	0%	0%	→	→
	Palm oil (Litre)	575	30.7%	40.2%	↑	↑		600	11%	13%	↑	↑
	Red beans (Kg)	475	28.5%	43.9%	↑	↑		650	71%	86%	↑	↑
	Imported rice (Kg)	1000	12.4%	14.3%	↑	↑		900	3%	4%	→	→
	Local rice (Kg)	625	7.8%	9.6%	↑	→		600	9%	9%	↑	→
	Vegetable oil (Litre)	590	31.1%	40.5%	↑	↑		600	11%	13%	↑	↑
	Sorghum (1.25 Kg)	260	23.8%	26.8%	↑	↑		200	11%	11%	↑	↑
Baga Road market	Peanuts (Kg)	600	33.3%	35.5%	↑	↑	Kasuwan Shanu	625	33%	34%	↑	↑
	Maize flour (Kg)	250	8.7%	11.1%	↑	↑		200	-13%	-13%	↓	↓
	Onion (Grams)	150	7.1%	7.1%	↑	→		100	-9%	-9%	↓	→
	Palm oil (Litre)	575	-0.9%	2.7%	→	→		650	3%	10%	→	→
	Red beans (Kg)	625	83.8%	98.4%	↑	↑		625	60%	76%	↑	↑
	Imported rice (Kg)	1000	14.9%	17.6%	↑	↑		900	2%	5%	→	→
	Local rice (Kg)	600	6.2%	6.2%	↑	→		625	24%	25%	↑	↑
	Vegetable oil (Litre)	650	8.3%	12.1%	↑	↑		600	1%	5%	→	→
	Sorghum (1.25 Kg)	275	27.9%	34.1%	↑	↑		280	47%	56%	↑	↑
Budum market	Peanuts (Kg)	625	33.1%	35.9%	↑	↑	Tashan Bama	625	58%	74%	↑	↑
	Maize flour (Kg)	210	-4.5%	-6.7%	→	→		400	82%	90%	↑	↑
	Onion (Grams)	100	0.0%	0.0%	→	→		100	0%	0%	→	→
	Palm oil (Litre)	675	10.7%	14.4%	↑	↑		600	12%	14%	↑	↑
	Red beans (Kg)	650	66.5%	85.7%	↑	↑		675	82%	99%	↑	↑
	Imported rice (Kg)	950	6.7%	9.6%	↑	→		1000	10%	12%	↑	↑
	Local rice (Kg)	595	19.1%	20.2%	↑	↑		650	20%	24%	↑	↑
	Vegetable oil (Litre)	650	10.3%	13.0%	↑	↑		600	11%	13%	↑	↑
	Sorghum (1.25 Kg)	275	39.9%	48.4%	↑	↑		200	11%	14%	↑	↑

 Price increase above normal price fluctuation
 Normal Price Fluctuation
 Price decrease below normal price fluctuation

Prices in Naira

Price fluctuation is considered normal if price change is within 5% for 1 month or within 10% for 3 months



Market	Commodity	Current price	% Change in current price		Degree of change	
			1 Month	3 Months	1 Month	3 Months
Potiskum	Peanuts (1.25 Kg)	450	12.5%	20.0%	↑	↑
	Maize flour (1.25 Kg)	300	20.0%	20.0%	↑	↑
	Onion (Grams)	175	0.0%	-22.2%	→	↓
	Palm oil (Litre)	450	-10.0%	-5.3%	↓	→
	Red beans (1.25 Kg)	550	37.5%	120.0%	↑	↑
	Imported rice (1.25 Kg)	750	0.0%	-3.2%	→	→
	Local rice (1.25 Kg)	600	14.3%	14.3%	↑	↑
	Vegetable oil (Litre)	600	0.0%	14.3%	→	↑
	Yam (1 tuber)	450	38.5%	38.5%	↑	↑

Gashua	Peanuts (1.25 Kg)	550	4.8%	22.2%	→	↑
	Maize flour (1.25 Kg)	290	10.0%	37.5%	↑	↑
	Onion (Grams)	30	20.0%	-50.0%	↑	↓
	Palm oil (Litre)	500	-4.2%	9.5%	→	→
	Red beans (1.25 Kg)	550	25.0%	46.7%	↑	↑
	Imported rice (1.25 Kg)	700	0.0%	-6.7%	→	→
	Local rice (1.25 Kg)	550	12.2%	22.2%	↑	↑
	Vegetable oil (Litre)	500	0.0%	11.1%	→	↑
	Yam (1 tuber)	400	35.7%	35.7%	↑	↑

Gulani	Peanuts (1.25 Kg)	400	0.0%	0.0%	→	→
	Maize flour (1.25 Kg)	300	0.0%	0.0%	→	→
	Onion (Grams)	100	11.1%	0.0%	↑	→
	Palm oil (Litre)	500	0.0%	25.0%	→	↑
	Red beans (1.25 Kg)	450	5.9%	12.5%	↑	↑
	Imported rice (1.25 Kg)	NA	0.0%	0.0%	→	→
	Local rice (1.25 Kg)	550	10.0%	-8.3%	↑	→
	Vegetable oil (Litre)	550	10.0%	10.0%	↑	→
	Yam (1 tuber)	300	0.0%	0.0%	→	→

- ↑ Price increase above normal price fluctuation
- Normal Price Fluctuation
- ↓ Price decrease below normal price fluctuation

Prices in Naira

Price fluctuation is considered normal if price change is within 5% for 1 month or within 10% for 3 months

Market	Current price	% Change in current price		Degree of change	
		1 Month	3 Months	1 Month	3 Months
Nguru	550	4.8%	22.2%	→	↑
	290	13.7%	26.1%	↑	↑
	30	20.0%	-53.8%	↑	↓
	500	-16.7%	-4.8%	↓	→
	550	29.4%	46.7%	↑	↑
	700	0.0%	0.0%	→	→
	550	10.0%	22.2%	↑	↑
	500	0.0%	11.1%	→	↑
	400	14.3%	14.3%	↑	↑

Geidam	550	10.0%	22.2%	↑	↑
	300	20.0%	50.0%	↑	↑
	125	25.0%	-16.7%	↑	↓
	500	0.0%	11.1%	→	↑
	525	16.7%	75.0%	↑	↑
	NA	0.0%	0.0%	→	→
	600	9.1%	20.0%	↑	↑
	500	0.0%	11.1%	→	↑
	550	10.0%	37.5%	↑	↑

Gujba	600	0.0%	36.4%	→	↑
	250	0.0%	25.0%	→	↑
	100	100.0%	0.0%	↑	→
	450	-10.0%	0.0%	↓	→
	450	26.7%	90.0%	↑	↑
	NA	0.0%	0.0%	→	→
	550	22.2%	10.0%	↑	→
	500	0.0%	0.0%	→	→
	635	27.0%	5.8%	↑	→



For further information please contact:

**VAM Team, WFP Nigeria,
christoph.waldmeier@wfp.org
Nigeria.VAM@wfp.org**