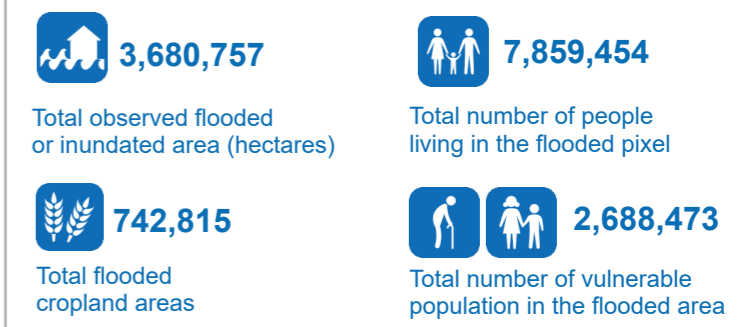
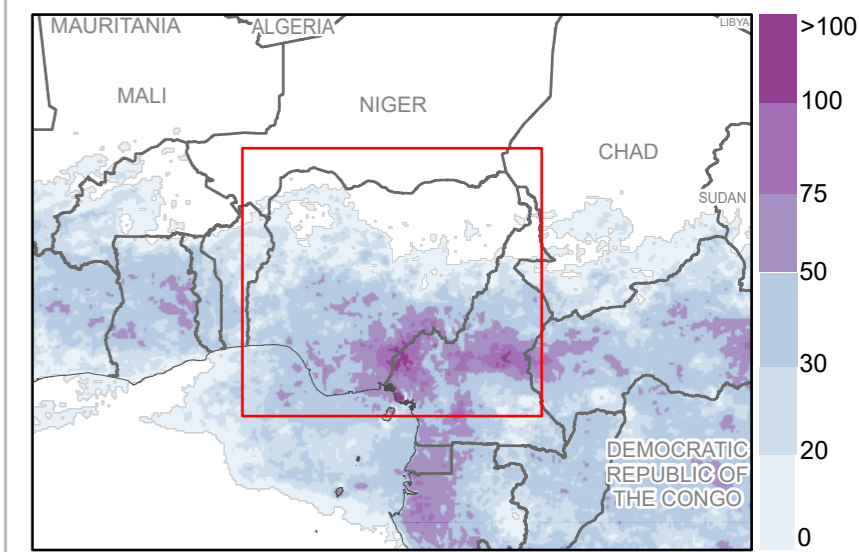


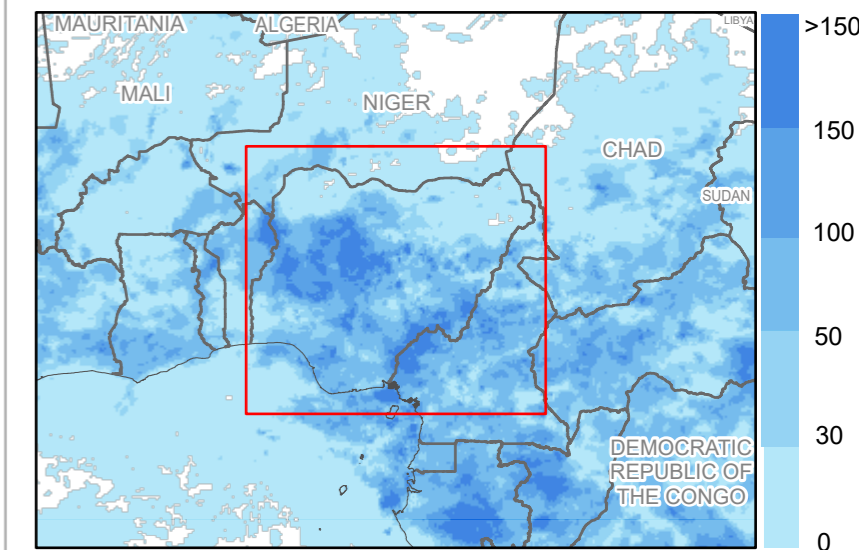
Rapid Flood Impact Summary



5-days precipitation forecast



7-days past accumulated precipitation



- Country Office
- Field Office
- Sub Office
- Warehouse
- National Capital
- Major City
- City
- River
- Road
- International Boundary
- Administrative Boundary 1
- Special boundary line; Armistice, undetermined or administrative line; Autonomous region boundary; Other; Sovereign base limit
- Permanent Water Bodies
- Dam / Reservoir

- Partly flooded
 - Moderately flooded
 - Highly flooded
- *Satellite Observed Flooding (NOAA VIIRS)*
- *Flooded pixel definition:
Partly flooded: 0 - 20% of pixel is with water
Moderately flooded: 20-60 % of pixel with water
Highly flooded: 60-100% of pixel with water*
- Historical Maximum Flood Extent MODIS 2000 - 20018
Source: DFO and Cloud2Street
- Population of Concern (UNHCR)

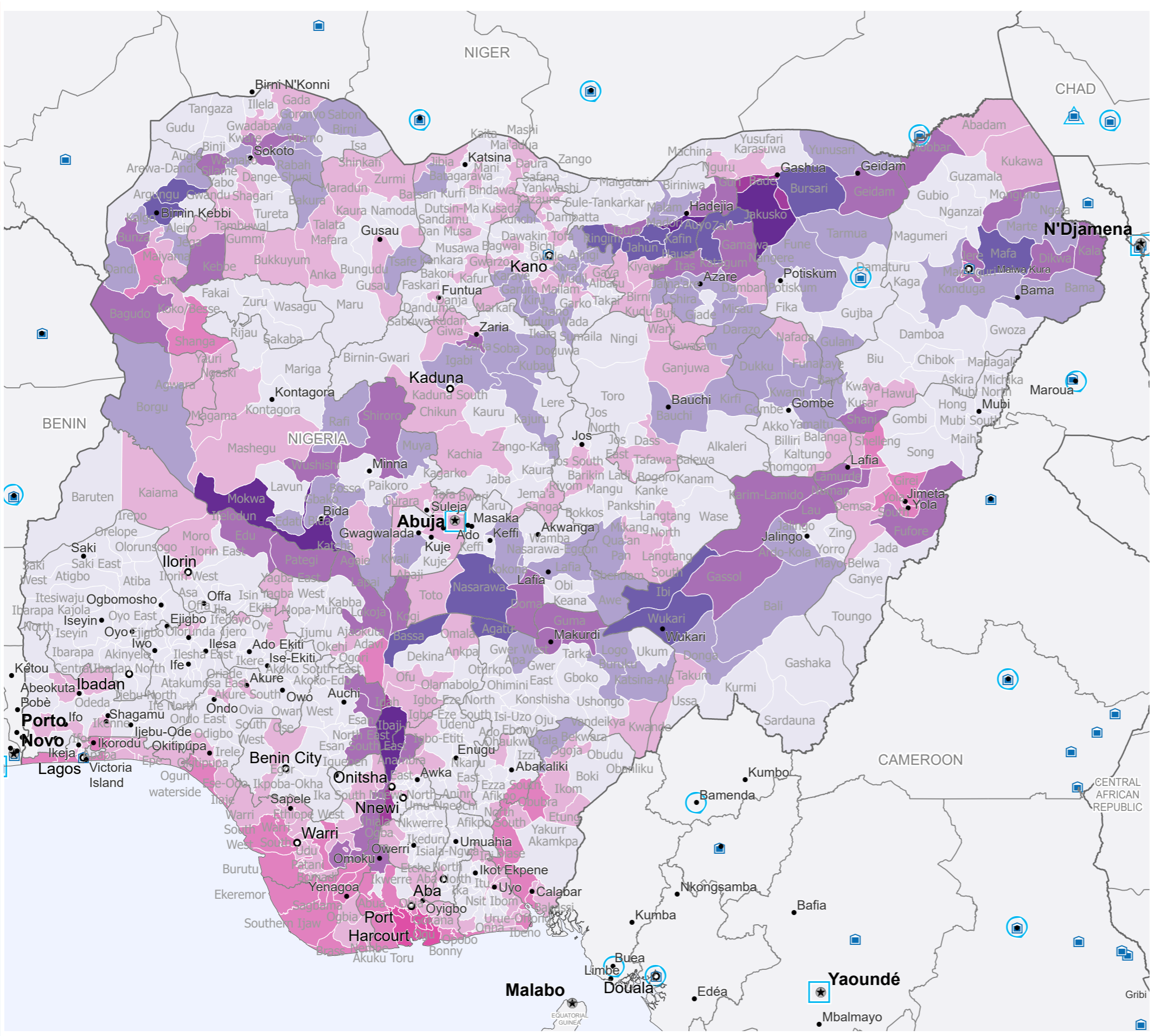
In partnership with

ADAM
Automated Disaster Analysis and Mapping
ADAM Flood Event

FloodList

The designations employed and the presentation of material in the map(s) do not imply the expression of any opinion on the part of WFP concerning the legal or constitutional status of any country, territory, city or sea, or concerning the delimitation of its frontiers or boundaries.

Data sources: WFP offices: WFP - Boundaries: UN Map, WFP - Roads: ©OpenStreetMap Contributors - Populated places: GeoNames - Accumulated rainfall: GPM - Weather forecast: ECMWF - Flood Detection: NOAA-VIIRS, MODIS NRT, ESA Sentinel 1 - IDP/Refugee Locations: UNHCR - Terrain: ESRI - Surface Water/Seasonality:JRC - Cropland Mask: NASA GFSAD30 - Population: WorldPop / GHSL - Maximum Flood Extent: NASA MODIS/DF0 and C2S



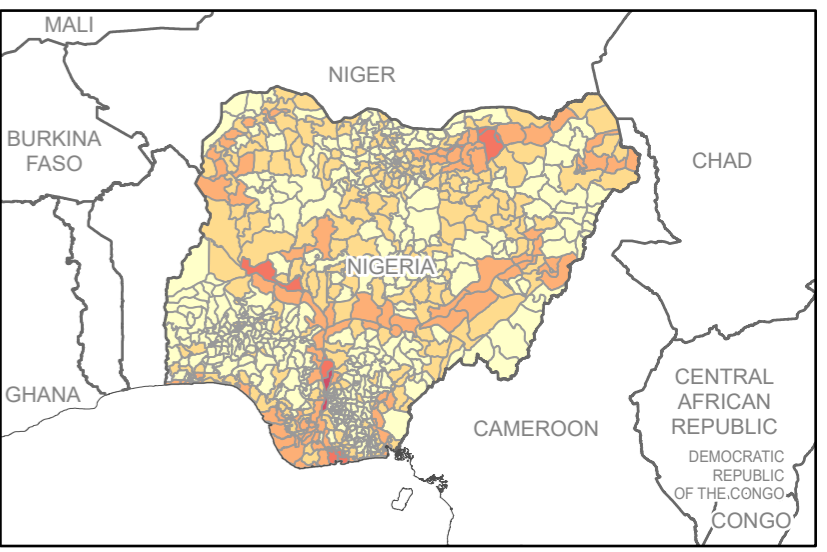
Flood Impact Data Aggregation

Derived data are summarized by administrative unit II (admin2). For any boundary related concerns, please write to wfp.adam@wfp.org. This aggregated information is indicative and for planning purposes only.

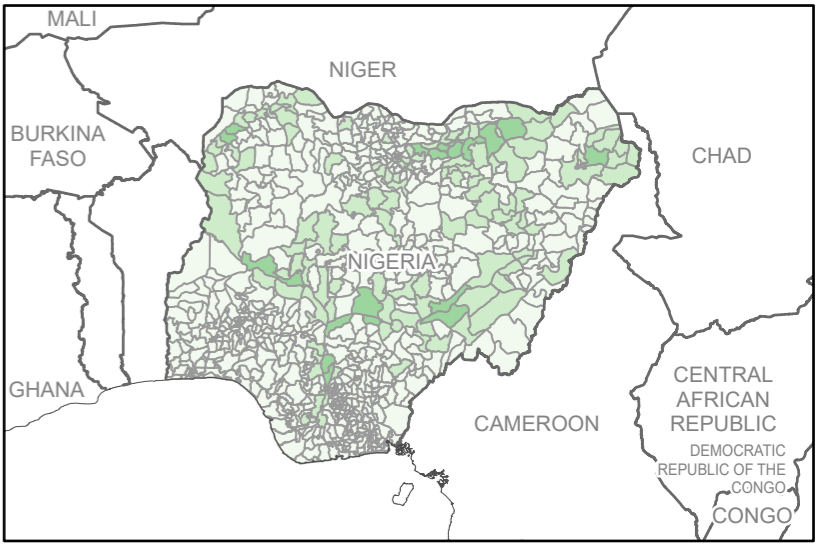
Global Data Sources:
Population - WorldPop 2021
Cropland Areas - NASA GFSAD30



Estimated population living within the flooded area (Admin Unit II)



Estimated crop lands within the flooded area (Admin Unit II)



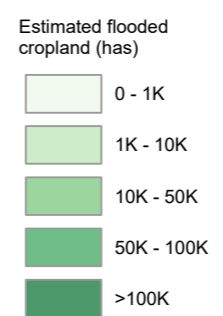
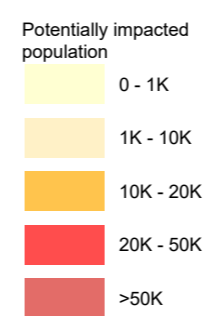
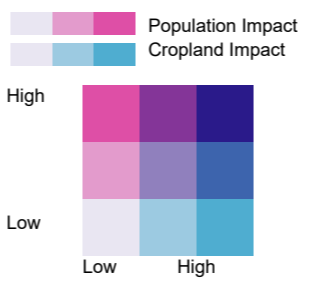
ADAM

Automated Disaster Analysis and Mapping

- Country Office
- Field Office
- Sub Office
- Warehouse
- National Capital
- Major City
- City
- River
- Road
- International Boundary
- Administrative Boundary 1
- Special boundary line; Armistice, undetermined or administrative line; Autonomous region boundary; Other; Sovereign base limit
- Permanent Water Bodies

Bi-variate color classification

These classes were dynamically derived from the impact estimates on population (x-axis) and cropland (y-axis) for 9 combinations of low-low and high-high impact categories for each administrative level-II (district)



The designations employed and the presentation of material in the map(s) do not imply the expression of any opinion on the part of WFP concerning the legal or constitutional status of any country, territory, city or sea, or concerning the delimitation of its frontiers or boundaries.

Data sources: WFP offices: WFP - Boundaries: UN Map, WFP - Roads: ©OpenStreetMap Contributors - Populated places: GeoNames - Accumulated rainfall: GPM - Weather forecast: ECMWF

Date Created: 05 Oct 2022 - Contact: hq.gis@wfp.org
Map Reference: Stat_dashboard_prod_v1



A.D.A.M Floods - Rapid Impact Analysis

**estimated number of people living in the flooded areas with at least 100 people potentially affected per district. Vulnerable population within flooded area are estimates from WorldPop data.*

Country Code	Region (Admin level 1)	District (Admin level 2)	Flooded Area (hectares)	Flooded Cropland (hectares)	Potentially Impacted Population*		
					Total in District	Children (0-9 y.o.)	Elderly (>60 y.o.)
NGA	Abia	Osisioma Ngwa	125	0	2,483	127	593
		Ugwunagbo	28	1	491	30	119
		Ukwa East	79	0	224	12	55
		Ukwa West	1,161	4	5,501	300	1,323
		Umuahia North	53	0	426	30	90
		Umuahia South	30	0	447	32	95
	Adamawa	Demsa	22,164	162	19,204	990	5,803
		Fufore	25,682	2,185	47,534	2,243	15,413
		Girei	15,897	326	54,901	2,058	15,867
		Guyuk	3,270	230	17,299	805	5,747
		Jada	278	206	390	25	125
		Lamurde	26,139	5,145	28,822	1,282	9,424
		Madagali	302	8	294	12	102
		Mayo-Belwa	1,821	0	6,440	405	1,996
		Numan	29,229	6,482	45,564	2,201	14,202
		Shelleng	6,067	989	35,684	1,681	11,757
		Song	771	148	842	41	280
		Yola North	544	0	12,296	475	3,600
		Yola South	5,442	362	50,956	1,660	13,788
		Akwa Ibom	Eastern Obolo	3,922	0	27,641	1,630
	Eket		518	0	3,521	175	855
	Esit - Eket		278	0	1,424	87	360
	Ibena		3,090	0	18,920	864	4,501
	Ibiono Ibom		575	111	4,067	251	1,018
	Ikot Abasi		1,461	0	8,411	489	2,054
	Ini		501	0	1,858	116	466

	Itu	1,428	33	4,663	255	1,133
	Mbo	3,638	2	21,622	1,150	5,487
	Mkpat Enin	39	0	146	8	35
	Okobo	795	0	9,226	368	2,058
	Onna	124	0	1,300	65	316
	Oron	602	0	21,318	828	4,687
	Oruk Anam	200	0	993	62	245
	Udung Uko	259	0	1,906	99	471
	Ukanafun	126	2	614	36	151
	Uruan	730	0	1,686	98	431
	Urue-Offong	104	0	1,109	57	273
	Uyo	28	0	1,467	63	315
Anambra	Anambra East	5,689	591	17,386	1,174	4,036
	Anambra West	91,416	12,792	252,208	15,128	63,439
	Anaocha	42	0	559	35	114
	Awka North	5,733	483	6,735	435	1,606
	Ayamelum	18,616	1,348	46,015	2,809	11,274
	Idemili South	172	0	1,405	84	311
	Ihiala	54	6	358	24	79
	Ogbaru	22,242	6,146	359,003	16,029	74,345
	Onitsha North	419	23	5,640	383	1,305
	Onitsha South	250	5	5,609	358	1,279
Bauchi	Alkaleri	1,243	134	461	18	158
	Bauchi	2,952	1,384	4,072	156	1,365
	Bogoro	82	40	121	6	41
	Damban	1,359	205	3,035	122	1,077
	Darazo	3,299	2,205	8,249	339	2,909
	Dass	134	34	111	5	39
	Gamawa	14,119	4,216	30,723	1,235	10,872
	Ganjuwa	1,315	656	2,521	102	906
	Itas	11,396	7,366	34,068	1,515	12,205
	Jama'are	2,221	1,301	4,761	198	1,685
	Katagum	5,399	2,661	8,635	351	3,001

	Kirfi	5,045	3,890	7,535	295	2,731
	Misau	3,826	2,787	12,722	519	4,463
	Shira	4,776	2,066	16,481	673	5,758
	Tafawa-Balewa	953	471	1,432	62	494
	Warji	2,740	586	9,057	370	3,243
	Zaki	46,594	19,318	84,081	3,441	29,690
Bayelsa	Brass	11,448	5	23,510	1,320	5,655
	Ekeremor	10,397	2	25,291	1,361	6,667
	Kolokuma	6,764	4	22,572	1,301	5,500
	Nembe	9,779	0	12,137	682	2,983
	Ogbia	314	1	1,761	92	442
	Sagbama	9,359	455	39,507	2,328	9,977
	Southern Ijaw	14,017	0	26,764	1,442	6,704
	Yenegoa	5,567	102	43,892	2,187	10,737
Benue	Ado	241	74	274	12	94
	Agatu	31,709	12,163	45,125	1,942	15,904
	Buruku	6,142	2,539	16,901	824	5,823
	Guma	34,660	5,726	56,658	2,443	19,972
	Gwer East	125	50	102	5	34
	Gwer West	6,650	3,713	4,921	209	1,746
	Katsina-Ala	3,824	2,239	11,380	573	3,877
	Kwande	2,439	196	2,543	135	851
	Logo	3,678	1,806	5,944	276	2,044
	Makurdi	10,415	1,661	39,970	1,354	11,408
	Ushongo	648	7	688	38	232
Borno	Abadam	11,365	147	2,199	99	756
	Askira	209	17	114	5	38
	Bama	22,524	2,630	10,347	545	3,597
	Bayo	3,667	1,155	4,006	174	1,408
	Biu	343	8	339	18	117
	Dambo	2,270	410	777	32	269
	Dikwa	28,300	5,854	27,350	1,240	9,685
	Gwoza	1,706	448	904	42	307

	Hawul	2,028	655	3,419	219	1,198
	Jere	10,425	1,606	58,859	2,386	19,519
	Kaga	447	306	124	5	43
	Kala	34,069	5,970	35,454	1,509	12,800
	Konduga	38,228	5,752	11,076	571	3,721
	Kukawa	29,704	0	8,406	331	2,899
	Mafa	65,046	12,371	66,314	2,920	22,482
	Maiduguri	410	102	26,384	1,104	8,738
	Marte	16,990	5,567	7,913	372	2,674
	Mobbar	21,094	9,732	33,840	1,452	11,824
	Monguno	21,646	6,161	21,849	1,025	7,288
	Ngala	10,093	2,275	19,441	822	7,111
	Nganzai	586	19	976	40	332
	Shani	9,439	3,300	27,361	1,212	9,736
Cross River	Abi	3,813	596	31,639	1,878	7,987
	Akamkpa	829	0	349	16	91
	Akpabuyo	4,080	82	11,755	613	3,110
	Bakassi	120	0	292	15	77
	Biase	12,144	214	25,281	1,359	6,466
	Calabar South	8,354	1	88,943	3,602	20,293
	Calabar-Municipal	541	69	9,528	314	2,096
	Etung	1,195	0	1,787	91	459
	Ikom	6,221	0	8,036	387	2,148
	Obubra	12,125	560	33,787	1,838	8,894
	Odukpani	18,607	334	72,109	3,342	17,014
	Ogoja	3,267	73	5,204	289	1,346
	Yakurr	870	348	3,359	203	841
	Yala	6,494	1,205	6,941	399	1,878
Delta	Aniocha South	1,284	4	1,282	127	314
	Bomadi	548	0	5,747	336	1,475
	Burutu	11,828	1	25,474	1,510	6,508
	Ethiope West	544	40	3,363	185	863
	Isoko North	3,300	395	7,202	464	1,755

	Isoko South	20,872	1,904	73,667	4,644	17,930
	Ndokwa East	63,496	5,633	63,246	4,751	15,797
	Ndokwa West	1,582	106	3,567	292	864
	Okpe	2,085	152	7,419	405	1,831
	Oshimili North	4,973	965	19,993	1,463	4,790
	Oshimili South	14,015	2,027	82,915	3,985	19,451
	Patani	2,376	146	12,243	699	3,124
	Sapele	3,401	42	13,633	794	3,490
	Udu	534	10	9,873	514	2,440
	Ughelli North	7,341	351	24,818	1,422	6,303
	Ughelli South	5,985	314	17,175	1,049	4,488
	Uvwie	66	2	1,277	66	326
	Warri North	17,055	0	16,498	908	4,089
	Warri South	23,442	8	74,945	3,936	17,584
	Warri South West	37,118	2	37,762	1,980	9,255
Ebonyi	Afikpo North	804	208	6,162	378	1,501
	Ezza South	125	123	453	27	117
	Ikwo	7,777	657	28,522	1,496	8,431
	Ishielu	611	519	955	66	265
	Ivo	56	0	179	11	42
	Izzi	316	124	583	30	183
	Ohaukwu	111	15	1,739	98	494
Edo	Akoko-Edo	42	0	243	15	61
	Esan South East	13,495	1,536	37,401	2,281	9,831
	Esan West	305	97	354	24	78
	Etsako Central	22,123	2,761	40,661	2,521	10,458
	Etsako East	11,035	1,184	20,141	1,172	5,878
	Orhionmwon	486	16	403	31	97
	Ovia North East	3,378	51	2,329	131	545
Ovia South West	786	1	487	27	118	
Ekiti	Aiyekire	291	16	876	52	221
	Ekiti South West	125	0	265	16	63
	Ikole	374	0	1,504	92	366

	Ilejemeji	143	25	522	34	131
	Moba	313	36	2,970	165	699
Enugu	Aninri	389	144	1,734	127	413
	Enugu East	42	0	119	7	28
	Ezeagu	1,049	0	2,127	181	465
	Udenu	14	4	178	12	43
	Uzo-Uwani	3,438	212	10,727	727	2,568
	Federal Capital Territory	Abaji	3,362	414	8,602	326
Abuja Municipal		179	0	6,355	123	1,640
Bwari		414	71	2,441	56	706
Gwagwalada		247	11	879	25	274
Kwali		4,536	1,051	8,031	326	2,604
Gombe	Balanga	702	230	1,234	53	424
	Dukku	3,154	1,400	4,826	199	1,707
	Funakaye	4,554	2,610	12,061	453	4,058
	Kwami	3,024	1,133	5,540	230	1,967
	Nafada	1,013	752	6,094	219	2,022
	Yamaltu	8,889	6,234	13,938	603	4,901
Imo	Ezinihitte	48	0	651	45	146
	Ihitte/Uboma	111	1	996	65	236
	Ngor-Okpala	37	7	135	11	30
	Oguta	2,160	464	8,183	542	1,907
	Ohaji	3,032	53	4,213	262	1,022
	Owerri West	28	0	393	23	75
Jigawa	Auyo	27,451	14,436	123,026	5,092	43,995
	Biriniwa	296	33	422	19	141
	Birni Kudu	1,144	335	3,142	158	1,139
	Buji	3,502	2,616	9,810	448	3,597
	Dutse	474	420	1,670	79	601
	Guri	65,698	8,303	66,001	3,012	23,214
	Gwaram	1,194	351	4,616	200	1,660
	Hadejia	459	58	7,394	304	2,615
	Jahun	12,082	10,930	37,756	1,787	13,852

	Kafin Hausa	17,180	12,905	53,387	2,300	18,979
	Kaugama	6,529	4,697	12,423	585	4,530
	Kazaure	725	180	9,713	387	3,412
	Kiri Kasamma	37,065	5,404	88,607	3,676	31,313
	Kiyawa	847	756	3,399	175	1,253
	Malam Madori	4,936	3,222	13,031	545	4,632
	Miga	26,193	14,571	57,709	2,559	21,007
	Ringim	15,520	13,601	47,629	2,568	16,948
	Roni	244	155	1,125	49	397
	Taura	10,758	9,283	27,422	1,339	10,209
	Yankwashi	477	57	940	38	339
Kaduna	Birnin-Gwari	455	76	607	26	222
	Chikun	7,674	720	8,784	364	2,813
	Giwa	1,280	614	1,683	65	615
	Igabi	7,834	3,285	10,325	397	3,622
	Ikara	206	152	406	18	150
	Jema'a	218	92	615	27	209
	Kachia	6,219	69	1,193	53	406
	Kaduna North	11	1	515	18	150
	Kaduna South	2	2	366	12	106
	Kagarko	961	29	781	34	268
	Kajuru	3,603	1,862	10,146	427	3,642
	Kauru	639	209	588	26	203
	Kubau	4,585	3,751	4,760	197	1,704
	Sabon-Gari	662	619	6,970	257	2,158
	Sanga	140	129	1,025	45	347
	Soba	2,073	1,855	4,634	184	1,654
	Zango-Kataf	468	219	479	21	167
	Zaria	2,221	2,177	28,201	1,118	9,181
Kano	Ajingi	5,441	4,677	18,900	995	6,691
	Albasu	248	191	725	32	256
	Bagwai	1,009	652	14,316	649	5,198
	Bebeji	2,381	1,184	6,107	289	2,049

	Bichi	125	116	600	28	216
	Bunkure	550	399	1,751	81	617
	Dawakin Kudu	2,117	1,844	13,548	622	4,618
	Doguwa	219	0	459	20	170
	Gabasawa	3,742	3,145	14,787	742	5,253
	Garko	799	643	4,630	212	1,653
	Garum Mallam	96	98	1,123	59	310
	Gaya	616	415	1,240	58	443
	Gezawa	282	234	905	37	320
	Gwarzo	505	453	4,544	187	1,633
	Kabo	709	599	13,149	565	4,668
	Karaye	2,368	1,138	17,313	762	6,425
	Kiru	1,583	1,008	3,515	146	1,264
	Kumbotso	55	53	1,273	50	435
	Kunchi	1,979	1,145	9,960	488	3,567
	Kura	804	569	4,874	221	1,695
	Makoda	656	493	6,779	313	2,454
	Minjibir	1,077	698	5,943	268	2,136
	Rano	3,217	2,147	10,960	460	4,051
	Rimin Gado	30	16	753	33	270
	Rogo	753	480	1,663	72	625
	Tsanyawa	81	61	756	34	276
	Tudun Wada	5,183	3,329	14,752	640	5,464
	Ungogo	42	28	232	10	83
	Warawa	1,772	1,464	8,062	375	2,774
	Wudil	1,714	1,565	11,833	545	3,995
Katsina	Batsari	1,321	1,029	6,560	273	2,436
	Bindawa	123	122	411	18	148
	Daura	937	536	7,199	273	2,534
	Dutsi	233	120	3,248	135	1,170
	Dutsin-Ma	1,310	713	10,728	444	3,826
	Funtua	493	226	2,427	92	879
	Ingawa	191	124	2,069	87	748

	Jibia	1,043	602	11,079	467	4,141
	Kafur	167	142	644	26	241
	Kankara	169	53	334	13	124
	Kankia	109	78	525	21	192
	Kusada	96	65	2,791	118	1,040
	Mai'adua	569	334	4,796	182	1,689
	Malumfashi	528	492	1,794	75	657
	Mashi	31	21	203	8	72
	Matazu	902	594	2,254	94	808
	Rimi	668	368	6,732	300	2,510
	Safana	68	61	336	14	120
	Sandamu	327	323	492	20	181
Kebbi	Aleiro	273	21	446	19	155
	Argungu	12,038	11,229	32,696	1,354	11,789
	Augie	6,307	2,715	7,208	303	2,638
	Bagudo	35,023	1,021	35,197	1,537	12,903
	Birnin Kebbi	13,200	12,483	33,109	1,392	11,704
	Bunza	6,352	2,719	22,845	1,020	8,323
	Dandi	13,647	1,207	13,307	571	4,876
	Gwandu	273	130	879	41	317
	Jega	1,626	1,060	11,646	462	4,232
	Kalgo	5,001	4,048	6,406	270	2,328
	Koko/Besse	7,120	261	6,755	283	2,440
	Maiyama	1,890	659	8,080	341	3,062
	Ngaski	8,048	939	13,731	584	5,089
	Shanga	21,217	848	20,638	810	7,129
	Suru	15,915	257	31,933	1,417	11,616
	Yauri	1,827	119	6,102	252	2,259
	Zuru	41	15	251	13	88
Kogi	Ajaokuta	9,050	676	24,389	904	7,816
	Bassa	38,052	10,179	41,535	1,969	13,877
	Ibaji	125,534	21,583	141,336	6,566	48,152
	Idah	9,603	2,576	103,742	4,689	32,733

	Igalamela-Odolu	7,832	275	6,934	325	2,134
	Kogi	35,174	1,951	43,213	1,841	14,751
	Lokoja	61,670	2,883	50,080	1,984	15,748
	Ofu	5,851	312	12,286	554	4,135
	Okehi	332	4	1,256	49	429
	Omala	3,465	212	5,754	252	1,955
	Yagba East	353	22	432	21	135
	Yagba West	1,603	0	2,442	115	775
Kwara	Asa	249	56	654	38	191
	Baruten	1,690	184	304	13	107
	Edu	42,242	7,846	44,894	1,805	15,109
	Ilorin South	14	0	681	38	196
	Ilorin West	152	64	1,331	79	366
	Kaiama	2,578	495	3,078	108	1,072
	Moro	1,567	123	5,197	206	1,819
	Pategi	37,159	6,302	30,389	1,234	10,144
Lagos	Alimosho	1	0	408	15	85
	Amuwo-Odofin	2,895	2	49,165	1,936	9,594
	Apapa	263	3	8,036	298	1,664
	Badagry	4,378	6	21,138	780	5,601
	Epe	7,781	1	14,405	863	3,446
	Eti-Osa	2,360	4	72,619	2,878	13,530
	Ibeju/Lekki	3,156	21	11,596	591	2,816
	Ikorodu	1,539	0	25,568	1,068	6,153
	Kosofe	291	0	3,038	143	610
	Lagos Island	233	0	31,590	1,922	5,884
	Lagos Mainland	66	1	7,930	478	1,484
	Ojo	2,040	0	27,224	720	6,709
	Oshodi-Isolo	124	0	4,564	179	905
Nasarawa	Awe	20,406	3,803	19,350	827	6,553
	Doma	35,004	6,776	36,880	1,464	12,769
	Kokona	7,842	5,587	3,145	126	1,070
	Lafia	6,651	3,534	6,440	274	2,150

	Nasarawa	55,650	19,028	26,123	1,114	8,708
	Nasarawa-Eggon	438	270	414	18	139
	Toto	17,379	572	12,289	535	4,271
	Wamba	251	26	235	11	80
Niger	Agaie	2,074	19	5,035	209	1,788
	Agwara	4,001	471	3,994	165	1,481
	Borgu	14,030	1,410	8,219	330	2,889
	Bosso	505	284	286	13	100
	Edati	6,888	3,902	18,181	775	6,459
	Gbako	12,912	5,281	11,964	479	4,325
	Gurara	734	230	1,331	53	462
	Katcha	18,416	8,256	18,347	748	6,578
	Kontagora	358	150	193	7	65
	Lapai	33,376	2,276	16,036	583	5,691
	Lavun	596	234	277	11	100
	Magama	3,823	651	4,276	184	1,566
	Mashegu	4,449	418	1,330	52	492
	Mokwa	153,719	30,861	176,428	7,158	62,608
	Muya	9,159	1,971	6,831	278	2,413
	Paikoro	752	262	348	16	123
	Rafi	15,315	2,980	7,779	343	2,774
	Rijau	305	88	595	27	211
	Shiroro	33,268	9,880	30,795	1,413	10,912
		Tafa	469	170	1,263	42
	Wushishi	18,087	4,710	22,046	868	8,069
Ogun	Abeokuta North	838	0	2,097	164	546
	Ado-Odo	172	0	406	19	109
	Egbado South	721	0	1,843	127	511
	Ifo	101	0	2,485	95	670
	Odeda	755	0	1,137	91	295
	Odogbolu	274	0	860	54	206
	Ogun waterside	2,709	0	5,732	334	1,433
	Shagamu	375	0	2,094	114	549

Ondo	Akure South	236	0	8,517	413	2,069
	Ese-Odo	709	0	1,040	62	263
	Idanre	36	0	113	7	31
	Ilaje	12,015	2	31,717	1,842	7,928
	Irele	229	0	506	28	134
	Odigbo	286	0	573	33	152
	Okitipupa	1,776	0	13,392	784	3,356
	Ondo East	325	3	5,761	344	1,461
	Ondo West	374	0	764	53	191
	Ose	427	0	275	16	64
Osun	Ife South	125	0	162	11	39
	Ifelodun	214	2	1,255	70	312
	Ila	55	2	473	29	117
	Ilesha East	14	6	100	7	23
	Irewole	152	0	400	26	98
	Isokan	21	0	187	12	46
	Iwo	55	9	820	49	201
	Obokun	14	0	134	8	32
	Odo-Otin	120	28	659	38	164
	Olorunda	699	43	3,783	213	931
	Orolu	202	10	1,494	72	364
Oyo	Akinyele	55	0	243	18	62
	Atiba	1,504	49	923	51	240
	Atigbo	752	12	472	24	124
	Egbeda	118	0	636	38	159
	Ibarapa East	138	19	188	11	45
	Iseyin	385	2	169	8	42
	Kajola	42	0	261	16	65
	Oluyole	263	0	196	11	50
	Ori Ire	138	0	334	20	87
	Oyo West	97	63	549	32	139
Surulere	23	21	279	17	69	
Plateau	Barikin Ladi	1,028	509	3,507	178	1,122

	Bassa	83	27	119	6	38
	Bokkos	144	153	364	20	113
	Jos North	124	69	819	32	232
	Jos South	399	266	5,603	242	1,556
	Kanam	365	292	555	27	192
	Langtang North	435	369	1,425	70	430
	Langtang South	626	489	1,153	44	385
	Pankshin	69	41	200	11	61
	Qua'an Pan	6,664	2,243	8,557	431	2,876
	Riyom	400	36	380	17	129
	Shendam	1,884	842	3,504	165	1,127
Rivers	Abua	3,740	197	21,660	1,234	5,308
	Ahoda East	127	0	591	34	146
	Ahoda West	2,737	105	27,627	1,616	6,791
	Akuku Toru	23,656	1	83,919	5,035	20,192
	Andoni	5,904	0	89,975	5,341	22,479
	Asari-Toru	6,420	1	114,092	7,202	26,525
	Bonny	25,194	115	127,489	6,171	28,050
	Degema	48,408	5	248,426	13,758	57,980
	Eleme	221	46	3,971	164	896
	Emohua	3,677	34	20,615	861	4,846
	Etche	709	21	3,777	222	884
	Gokana	467	122	9,749	553	2,328
	Ikwerre	287	117	884	49	209
	Khana	764	136	10,012	601	2,489
	Obia	837	3	13,309	376	2,943
	Ogba	9,714	1,232	40,702	2,367	9,972
	Ogu	7,330	75	102,330	6,217	24,607
	Okrika	14,689	28	191,516	9,876	43,025
	Omumma	356	1	1,776	104	416
	Opobo	4,884	0	58,509	3,601	14,296
Oyigbo	1,038	55	5,396	234	1,327	
	Port-Harcourt	2,213	6	79,205	2,976	16,001

Sokoto	Tai	103	0	2,130	128	519
	Binji	127	36	111	5	40
	Bodinga	978	476	4,038	193	1,431
	Gada	1,633	273	7,816	346	2,910
	Goronyo	5,147	3,212	13,604	645	5,017
	Gwadabawa	940	456	5,044	225	1,865
	Illela	136	100	812	34	298
	Isa	199	57	504	23	187
	Kebbe	5,661	2,353	24,188	1,015	8,986
	Kware	6,163	3,557	40,866	1,965	13,968
	Rabah	6,869	5,820	15,693	775	5,692
	Sabon Birni	6,767	2,905	14,126	719	5,250
	Shagari	3,624	833	11,571	529	4,341
	Silame	10,248	4,716	28,199	1,214	10,249
	Sokoto North	1,036	1,009	9,310	429	3,102
	Sokoto South	28	19	2,287	104	759
	Tambuwal	2,281	1,000	11,743	528	4,249
	Tangaza	95	0	103	5	38
	Tureta	208	4	646	29	242
	Wamako	4,567	3,237	13,480	622	4,518
Wurno	5,938	2,173	26,932	1,280	9,803	
Yabo	423	64	862	39	320	
Taraba	Ardo-Kola	25,113	1,456	12,659	547	4,346
	Bali	15,888	2,475	8,390	340	2,880
	Donga	10,084	3,970	9,774	423	3,351
	Gashaka	2,310	538	779	29	259
	Gassol	130,583	7,437	61,684	2,400	21,265
	Ibi	88,488	10,330	38,088	1,532	12,998
	Jalingo	318	260	734	32	244
	Karim-Lamido	87,922	1,064	34,626	1,511	11,970
	Kurmi	1,521	17	719	32	242
	Lau	29,408	1,883	21,596	945	7,446
Sardauna	527	0	133	6	45	

	Takum	3,953	0	1,055	50	355
	Ussa	3,905	0	948	41	321
	Wukari	36,672	15,098	29,164	1,168	9,362
Yobe	Bade	50,476	6,708	147,064	6,013	50,619
	Bursari	49,584	11,490	36,278	1,786	12,305
	Fika	166	109	391	14	130
	Fune	10,025	2,273	6,144	257	2,146
	Geidam	25,884	8,997	20,642	965	6,782
	Gujba	480	287	231	9	76
	Gulani	7,618	5,188	15,669	625	5,379
	Jakusko	108,877	23,725	141,961	5,849	49,179
	Karasuwa	3,119	819	6,681	293	2,306
	Nangere	5,398	1,357	5,782	240	2,007
	Nguru	2,513	28	6,382	275	2,098
	Tarmua	7,818	2,436	2,683	129	906
	Yunusari	15,586	3,396	8,505	407	2,885
	Zamfara	Anka	981	247	1,080	45
Bakura		3,041	2,708	5,713	251	2,122
Bukkuyum		1,218	728	2,663	121	978
Gummi		4,055	641	11,833	514	4,318
Gusau		1,286	114	4,415	184	1,520
Kaura Namoda		371	306	831	35	297
Maradun		2,433	448	9,533	405	3,453
Maru		989	104	626	27	228
Shinkafi		1,429	650	6,131	300	2,242
Talata Mafara		340	187	1,179	51	427
Tsafe		1,505	1,458	1,962	82	734
Zurmi		1,301	541	4,447	201	1,621