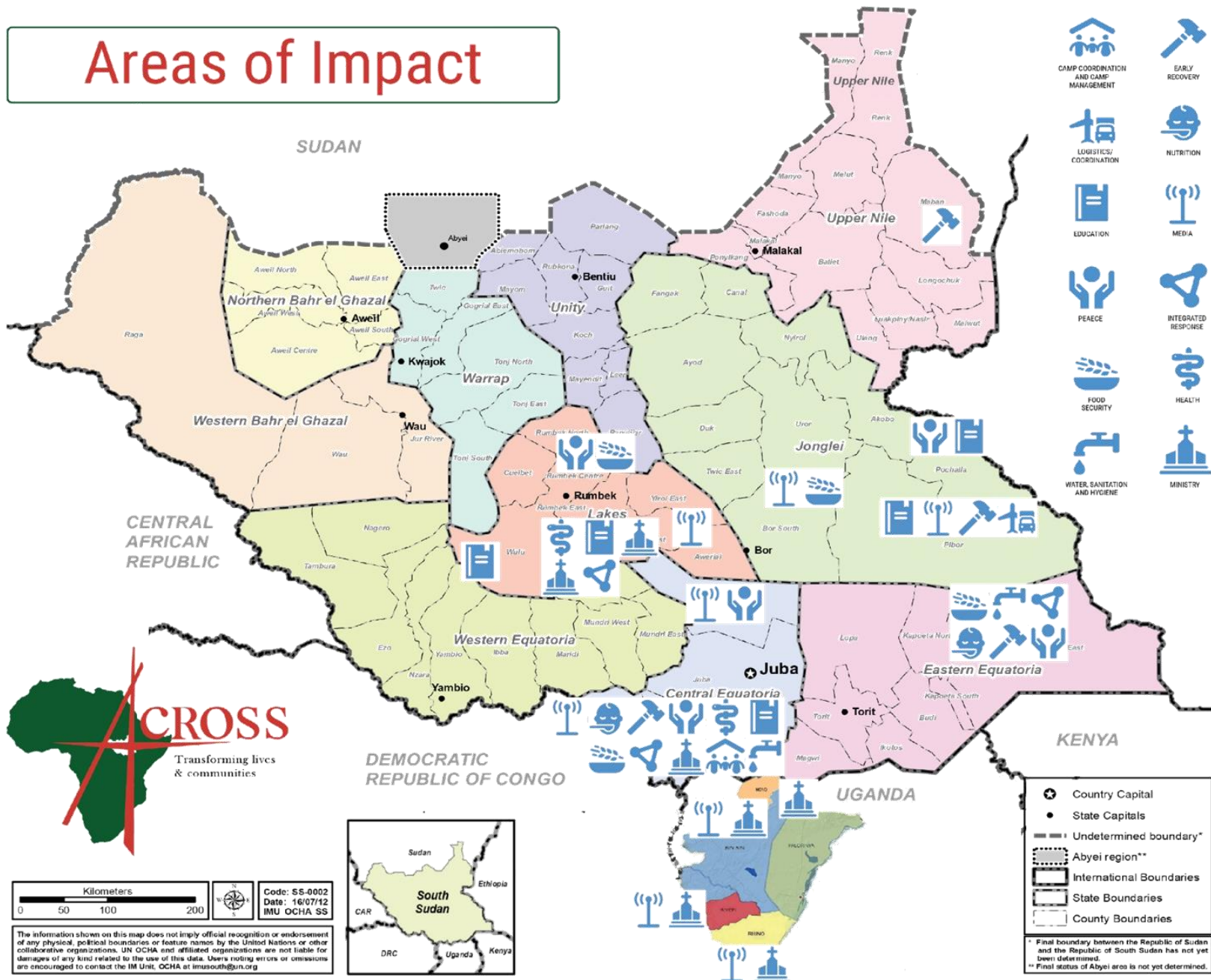


INTRODUCTION



ACROSS is a faith-based non governmental organization serving in South Sudan and beyond with the mission of transforming lives and communities through a Christ-centred, holistic approach.

Areas of Impact



- CAMP COORDINATION AND CAMP MANAGEMENT
- EARLY RECOVERY
- LOGISTICS/COORDINATION
- NUTRITION
- EDUCATION
- MEDIA
- PEACE
- INTEGRATED RESPONSE
- FOOD SECURITY
- HEALTH
- WATER, SANITATION AND HYGIENE
- MINISTRY



Code: SS-0002
Date: 16/07/12
IMU OCHA SS

The information shown on this map does not imply official recognition or endorsement of any physical, political boundaries or feature names by the United Nations or other collaborative organizations. UN OCHA and affiliated organizations are not liable for damages of any kind related to the use of this data. Users noting errors or omissions are encouraged to contact the IM Unit, OCHA at imussouth@un.org



- Country Capital
 - State Capitals
 - Undetermined boundary*
 - Abyei region**
 - International Boundaries
 - State Boundaries
 - County Boundaries
- * Final boundary between the Republic of Sudan and the Republic of South Sudan has not yet been determined.
** Final status of Abyei area is not yet determined.

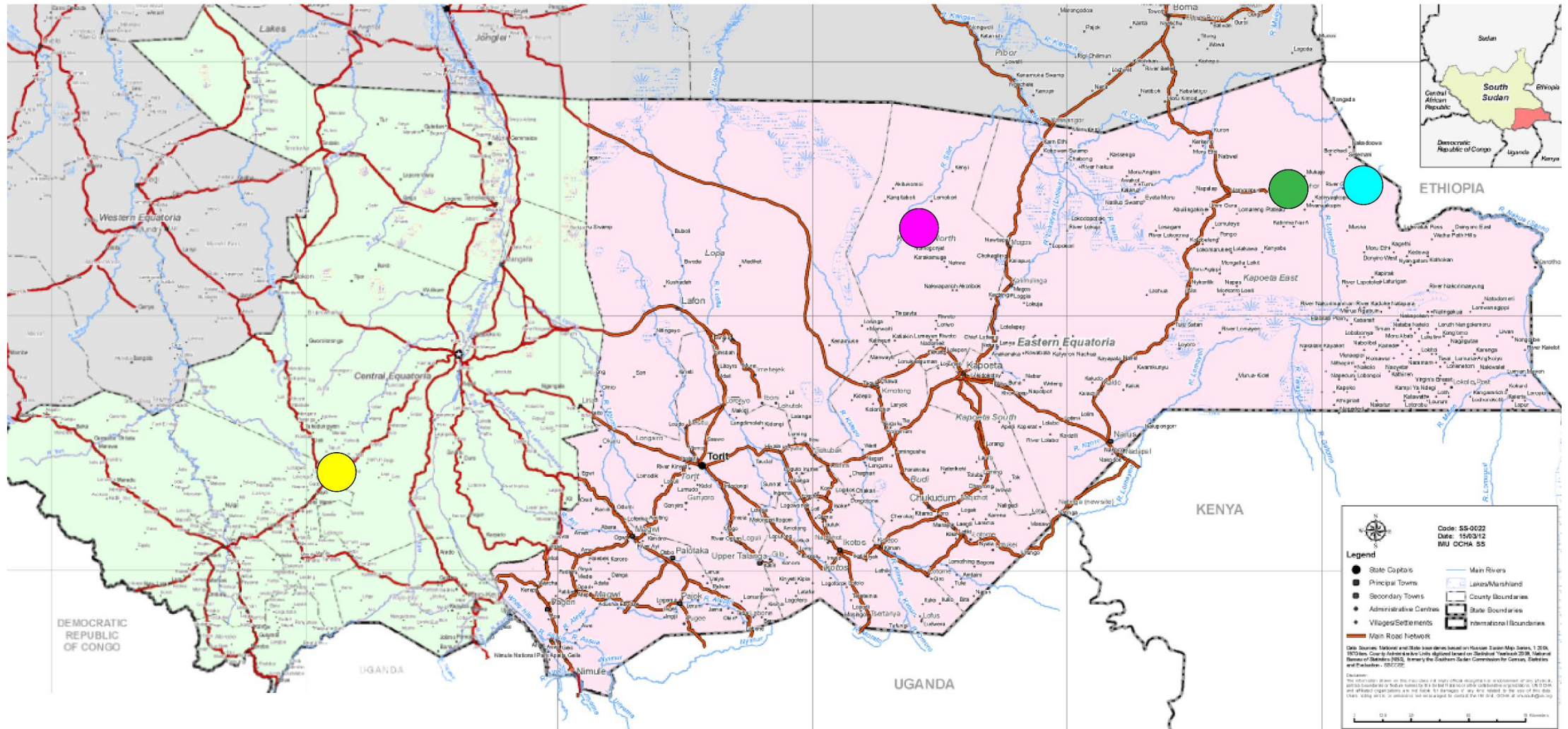
Integrated Multisectoral Lifesaving Humanitarian Assistance

Lainya: 800 HHs (451 F)
-FSL
-WASH
-Nutrition

Kapoeta North: 600 HH (390 F)
-FSL
-WASH

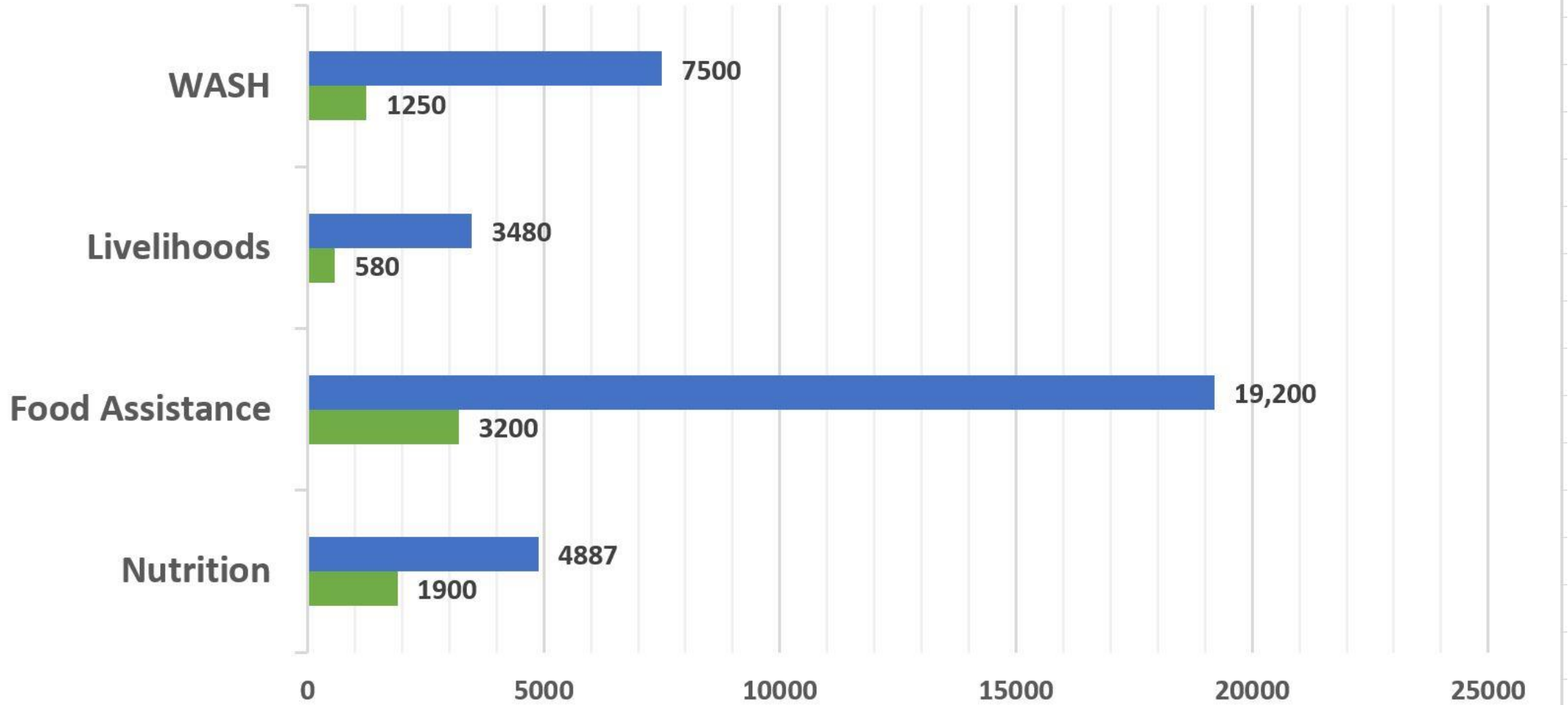
Kapoeta East: 1,800 HHs (1,276F)
-FSL
-WASH
-Protection

Lotimor: 300 HHs (261F)
-FSL
-WASH
-Nutrition



Target Beneficiaries

■ Individuals ■ Households



Women and girls have
easier access to water
and improved nutrition
and livelihoods





Harvesting
Ground
Nuts

New Gardens





New boreholes and latrines improve sanitation and reduce GBV

Challenges

- ACROSS is only implementing outreach and referral components of nutrition in Kapoeta East and therefore the lead nutrition partner have limited capacity to provide nutrition supplies, referral and treatment (SAM) severe acute malnutrition with medical complication/s to Stabilization Centers.
- No harmonization of selection criteria for beneficiaries between FSL and nutrition partners in areas where ACROSS is not the direct implementer of all three sectors is.
- Distance to nutrition treatment centers
- Lack of capacity of the of the lead partner leading to low level of replenish of nutrition supplements (RUTF,CSB++ and RUSF).

Recommendations

- Harmonization of beneficiary selection criteria for Nutrition and FSL
- Nutrition and FSL partner to have shared roles and responsibilities to ensure no gaps in the implementation of these two sectors.
- Avail funding to those national and INGOs that are willing to reach hard-to-reach locations.

