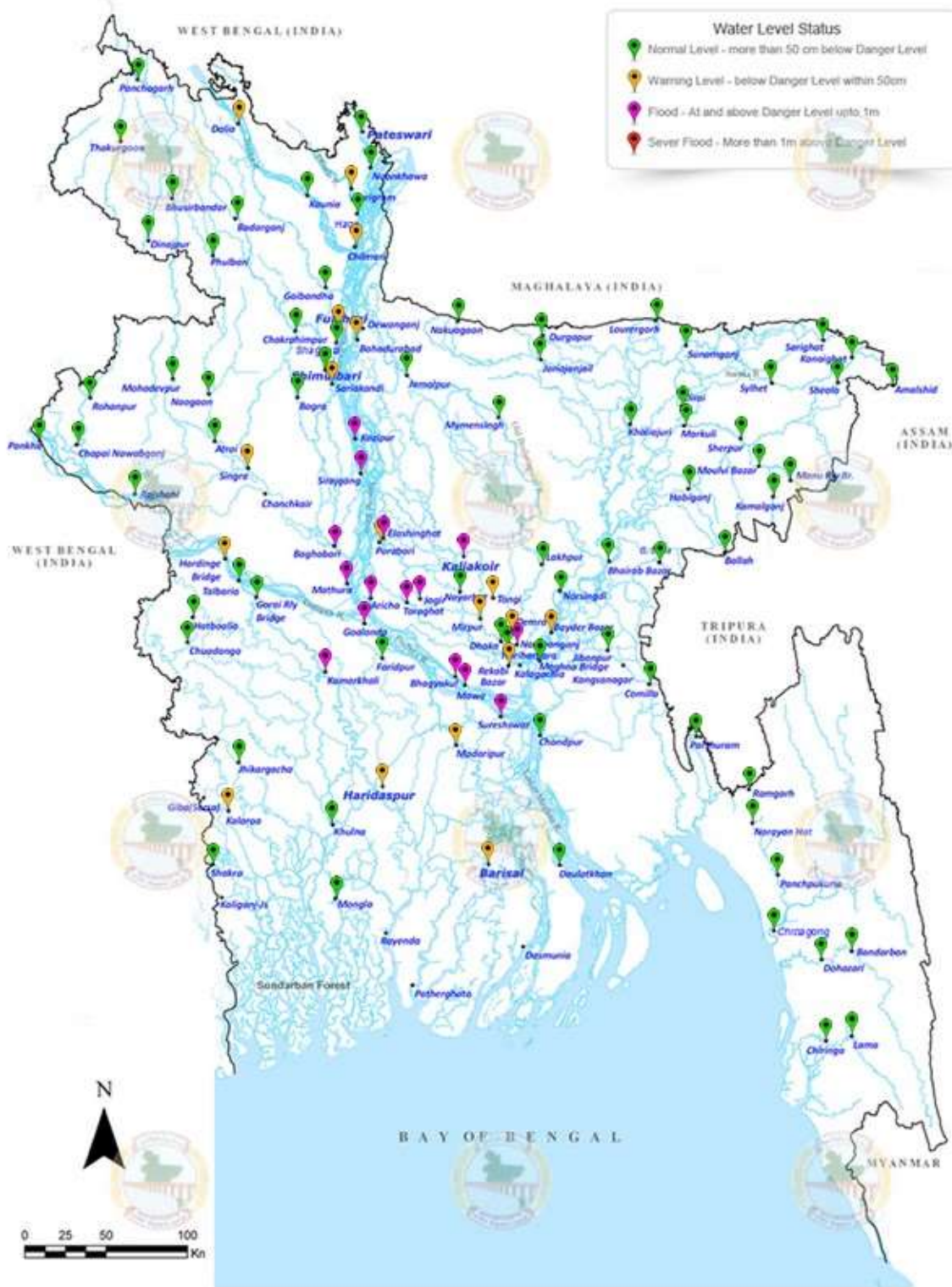


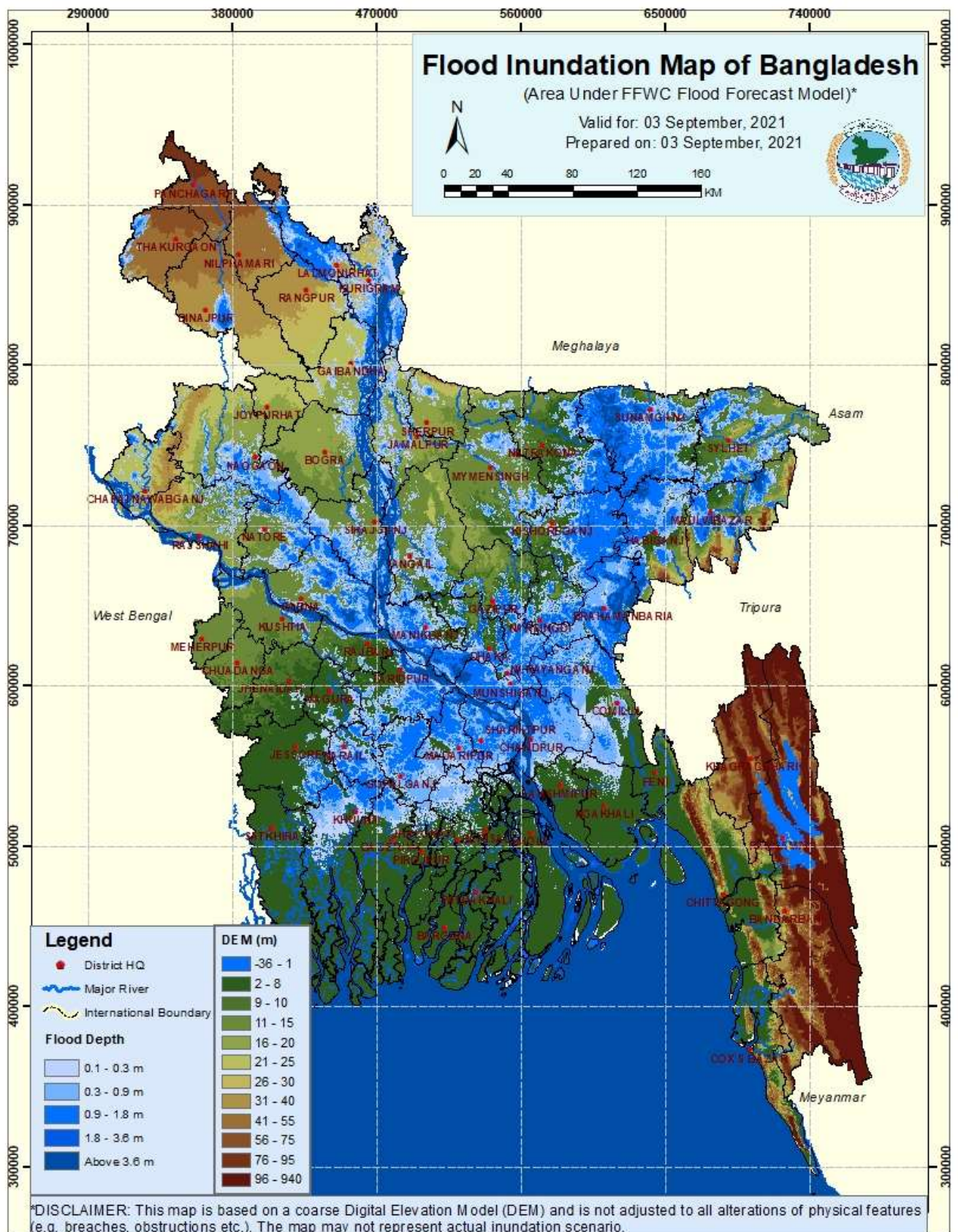
# Food Security Cluster Bangladesh Flood Situation Report

## 7 September 2021

■ Severe ■ Danger ■ Warning ■ Normal ■ South Eastern Hill ■ Ganges ■ Meghna ■ Brahmaputra  
 River Based Map | Division Based Map | District Based Map | Google Map



Source: Flood Forecasting & Warning Centre, 7 September 2021



Source: Flood Forecasting & Warning Centre, 3 September 2021

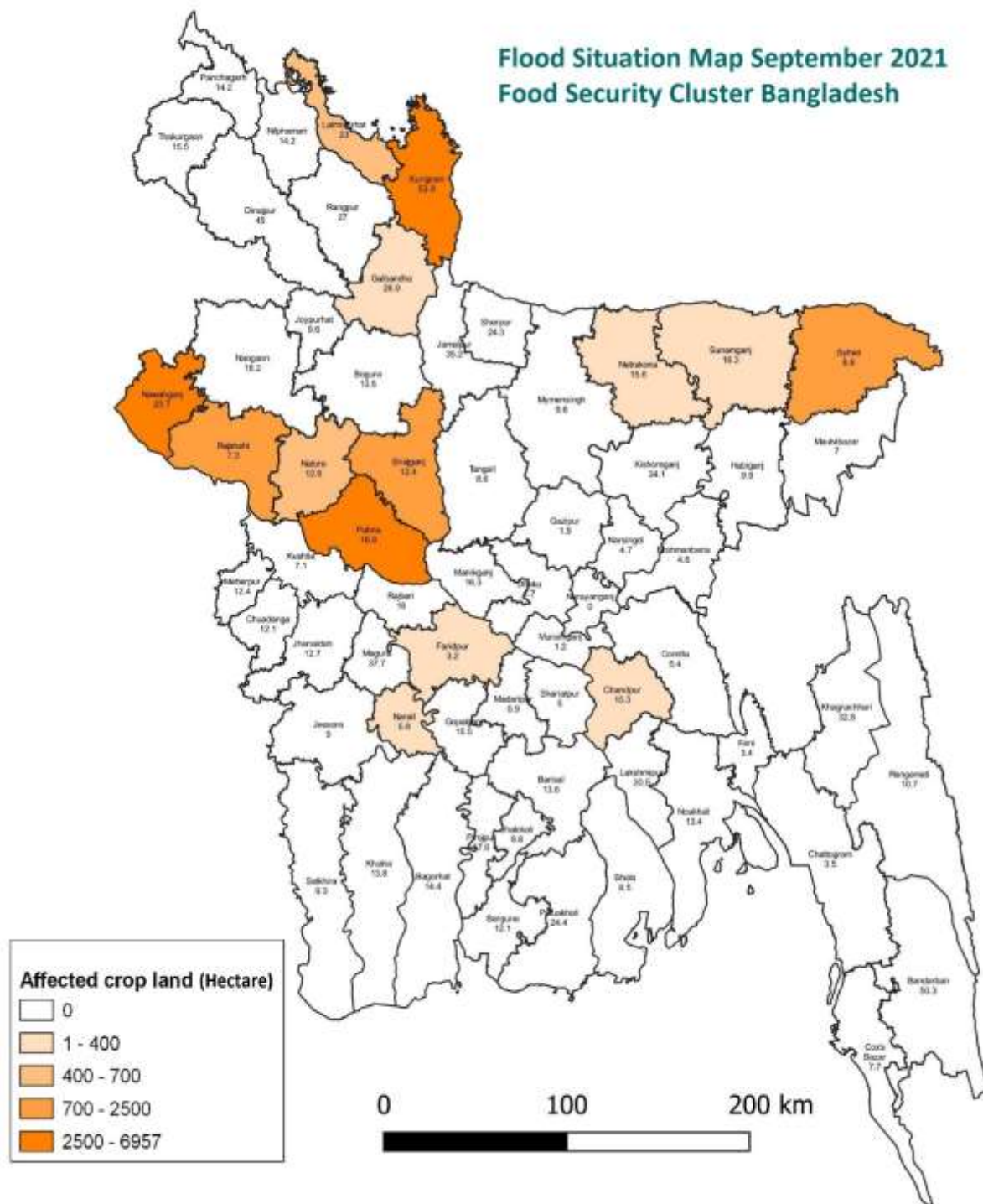


## Background and Current Flood Situation

From the foothills of the Himalayas, seven main rivers - Brahmaputra, Jamuna, Teesta, Dharla, Dudhkumar, Ghaghat, Karatoya - flow through the districts of Kurigram, Lalmonirhat, Rangpur, Bogra, Sirajganj and Pabna. While water levels started rising in the major rivers since 18<sup>th</sup> of August due to heavy rainfall and a rush of water from the upstream parts of India. According to the Government, 23 districts are already affected by these floods that are rather late in the season. The continuous rain of last week across the country in addition to the water coming from upstream are increasing flooding in low lying areas of the northern and north-eastern region of Bangladesh. As a result, the possibility of river erosion in some places in Bangladesh increased.

### Highlights:

1. According to the Department of Agriculture Extension (DAE), 69,360 hectares of crop land are affected by heavy monsoon and flood in 23 districts among these 14 districts are affected by both flood and monsoon. 68,241 hectares of crop land are affected by heavy monsoon and flood in 14 most affected districts.
2. Heavily affected districts are Kurigram, Gaibandha, Lalmonirhat, Sylhet, Sunamgonj, Chapainawabgonj, Rajshahi, Netrokona, Natore, Sirajgonj, Pabna, Tangail, Faridpur, and Chandpur. Among these affected districts, Kurigram is Integrated Food Security Phase Classification (IPC) level 4 and Gaibandha, Lalmonirhat, Sylhet, Sunamgonj are IPC level 3 district.
3. According to the Department of Livestock Services (DLS), there are 30 affected upazilas (in 14 most affected districts) where there is a developing animal food crisis due to the inundation of grassland. The affected people are preparing to take shelter to higher land with their livestock.
4. All major rivers of the country are in a falling trend which may continue in the next 72 hours.
5. Around 25,000 people are marooned in northern parts of the country while approximately 40,000 HHs are affected by this flood as per the initial information compiled from local NGOs and media reports.
6. The flood might result in a loss of crops, seeds, and agricultural land along with losses of livelihood options depending on agriculture. The ongoing COVID-19 pandemic already impacted people's income and might add further hardship.
7. According to the Ministry of Food, government food stocks are at a satisfactory level. The government stock of rice is 1.6 million MT, while there is 166,000 MT of wheat and 91,000 MT of paddy. Import of rice is also under process to increase the food stocks.
8. The price of fine rice and other food commodities increased last week. Markets are operational in most of the flood affected areas.
9. Different government departments are monitoring the situation.
10. Although it is less likely there will be a major flood, due to the ongoing pandemic and limited response to the 2019 floods; livelihoods are greatly challenged and access to food became an issue for many low-income households.
11. Female headed households (FHH) are always more vulnerable in any disaster situation especially to exploitation, abuse and violence. A World Bank demographic and health survey in 2018 estimated that in Bangladesh 15.8% of HHs are FHHs.



Data Source: Department of Agriculture Extension and Food Security Cluster as of 7 September 2021

### Forecast

- All major rivers of the country are in a falling trend which may continue in next 72 hours.
- In the next 72 hours, the flood situation may continue to improve in the districts of Sirajganj, Pabna, Manikganj, Rajbari, Faridpur, Munshiganj and Shariatpur.

## Response

**Ministry of Disaster management and Relief (MoDMR):** The Ministry of Disaster Management and Relief has allocated 1200 MT of rice, 200 bundles of CGI sheets with 600,000 taka for house repair, 30 million taka has been allocated for food and child food, 50 million taka was allocated for cattle feed, 13,000 packs of dry food are allocated.

**Department of Livestock Services (DLS):** The Department of Livestock Services is providing veterinary services including treatment and vaccination. A summery report is under process.

**Department of Agriculture Extension (DAE):** The Department of Agriculture Extension is monitoring the situation to ensure recovery of damaged crops.

**FAO:** Through the Special Fund for Emergency Response and Rehabilitation (SFERA), FAO will launch an emergency response at Kurigram, Gaibandha and Jamalpur districts that will cover a total of 9,375 farmer households where 3,750 households will receive water sealable storage silos and 5,625 households will receive livestock feed (50kg/HH) as humanitarian assistance. The response is planned to start from 9 September 2021.

**WFP:** WFP is monitoring the situation. WFP is facilitating the district level food security cluster coordination.

**Bangladesh Red Crescent Society (BDRCS):**

- BDRCS has distributed dry food packages (flattened rice, sugar, fortified biscuits, ORS) among 2,000 households in 4 districts (Tangail, Sirajganj, Rajbari and Manikganj)
- BDRCS has distributed food package (rice, pulse, vegetable oil, iodine salt, potato) among 650 households in Kushtia and Kurigram districts.
- BDRCS has deployed volunteers for dissemination of messages on flood forecast and awareness
- BDRCS has provided First Aid services and Evacuation support in 6 districts

**Save the Children International (SCI):**

- SCI has started to preposition contingency stocks such as hygiene kits, kitchen kits at Gaibandha while some kits are already available at Sirajgonj and Kurigram through partners' presence- MMS, SKS and MJSKS.
- SCI Anticipatory Action projects at Sirajgonj and Gaibandha have already activated the "Pre-activation Trigger" while a number of community-based early actions such as – bamboo bridge, preparation of the flood shelter, set-up of cattle shelters, repair of embankment cum road etc. have been completed. Affected people are already getting benefits from these completed actions.
- Multi-Purpose Cash Grant (MPCG) for 3450 HHs along with COVID-19 sensitive hygiene kits are ready to support depending on the activation trigger based on scale and severity of the flood.

## Food Security Cluster Contact

**Mohammad Mainul Hossain Rony**, Cluster coordinator, [Mohammad.rony@wfp.org](mailto:Mohammad.rony@wfp.org)  
**Ajmerry Hossain**, Information Management Officer, [ajmerry.hossain@wfp.org](mailto:ajmerry.hossain@wfp.org)





## Pictures

*Photographs taken by Muslim Aid*



**Kurigram, 26 Aug 2021**



**Gaibandha, 26 Aug 2021**



**Gaibandha, 26 Aug 2021**



**Kurigram, 27 Aug 2021**



**Kurigram, 27 Aug 2021**