

# Food Security Cluster monthly meeting focusing cyclone MOCHA

Zoom

11 May 2023



**BANGLADESH**  
**FOOD SECURITY CLUSTER**  
*Strengthening Humanitarian Response*

# Round of Introduction



BANGLADESH  
**FOOD SECURITY CLUSTER**  
*Strengthening Humanitarian Response*

## Know each other & rules

# AGENDA



BANGLADESH  
**FOOD SECURITY CLUSTER**  
*Strengthening Humanitarian Response*

- 1. Update on probable Cyclone.**
- 2. Contingency plan /MPA discussion.**
- 3. CRPD Update**
- 4. FSC Partner's preparedness update.**
- 5. Logistic Cluster update**
- 6. AOB**

# 1

## Update on probable Cyclone



BANGLADESH  
**FOOD SECURITY CLUSTER**  
*Strengthening Humanitarian Response*

The deep depression over the southeast Bay of Bengal intensified into a cyclonic storm "Mocha" (pronunciation: mokha) over the same area. Probable landfall is 14 May 2023 evening

[Summary](#)

[Impact](#)

[Meteo](#)

[Maps & Reports](#)

[Media](#)

[Resources](#)

### Event summary

Tropical Cyclone **MOCHA-23** can have a high humanitarian impact based on the maximum sustained wind speed, exposed population and vulnerability.

GDACS ID	TC 1000970
Name	MOCHA-23
From - To	11 May - 11 May
Exposed countries	Myanmar
Exposed population	3 million in Category 1 or higher
Maximum wind speed	176 km/h Category 2
Maximum storm surge	n.a.
Vulnerability	High (Myanmar)

### GDACS Score



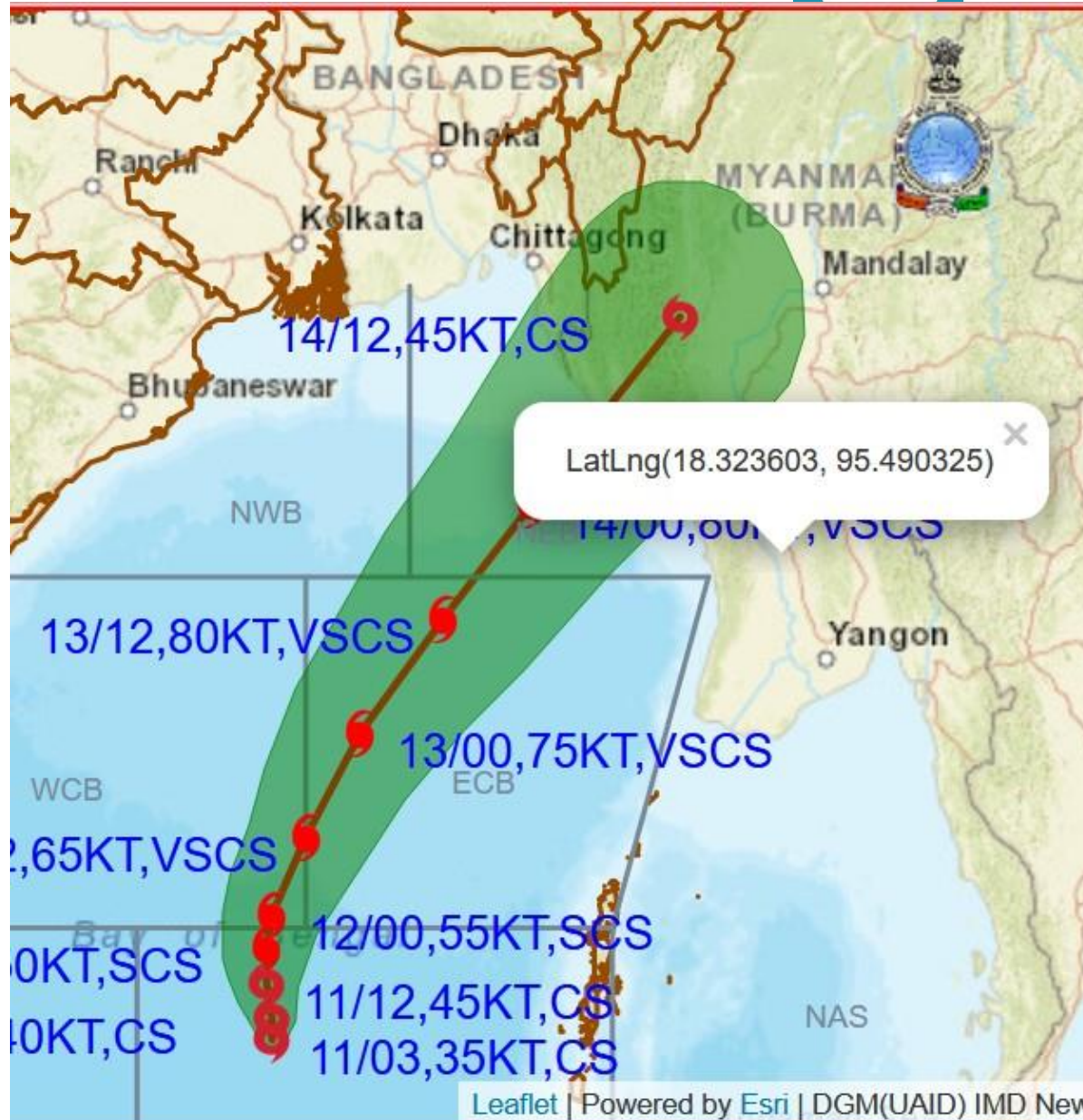
For more info on GDACS alert score click [here](#).

⌵	Wind	Storm surge	Rainfall	GDACS score
GDACS JTWC	176 km/h	n.a.	n.a.	2.5

Maximum expected impact (wind, storm surge and rainfall) using different [data sources](#).

# 1

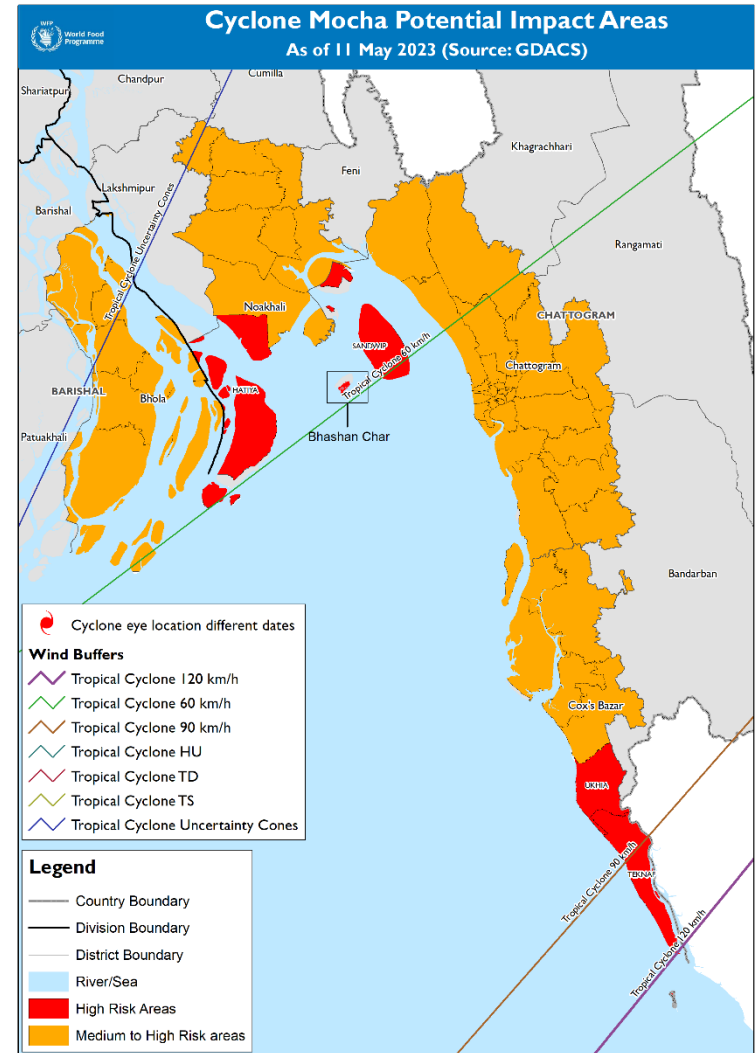
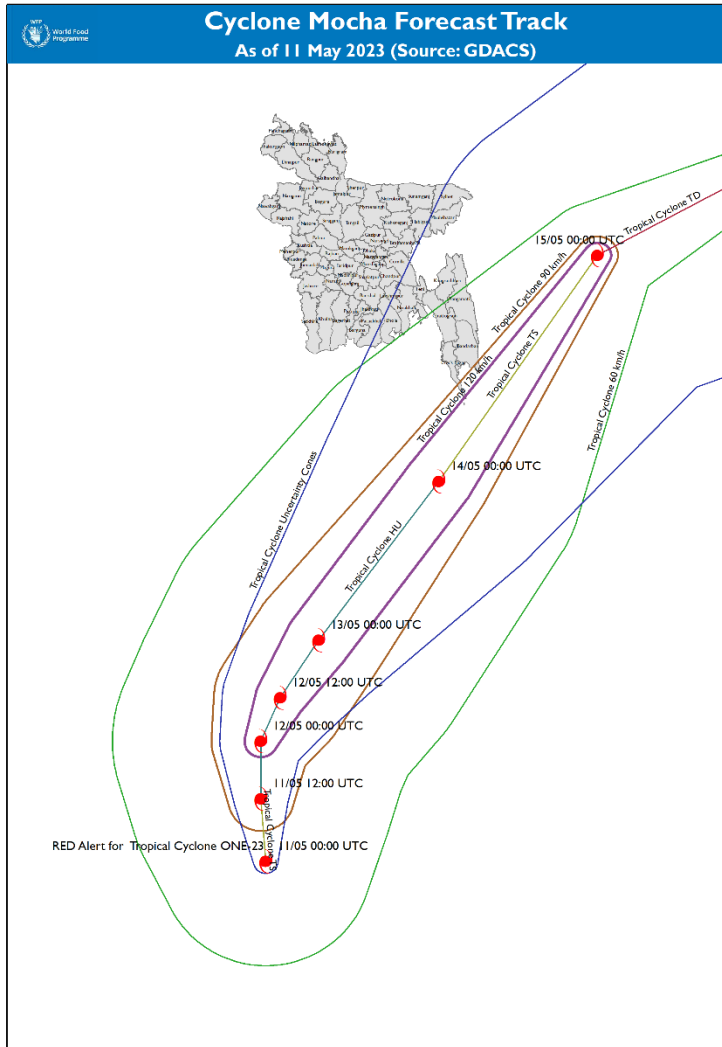
## Update on probable Cyclone





World Food Programme

SAVING LIVES  
CHANGING LIVES





# 1

# Update on probable Cyclone



**BANGLADESH**  
**FOOD SECURITY CLUSTER**  
*Strengthening Humanitarian Response*



**TROPICAL STORM**

**EVENT INFO**



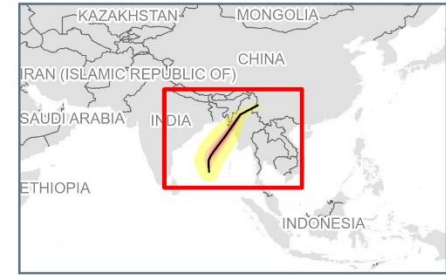
**Current windspeed:** 64.8 km/h  
**Max. Storm Surge:** Not Available  
**Current Coordinates:** Lat: 11.1 Lon: 88.2  
**Warning ref.:** JTWC - Bulletin #1

**PEOPLE LIVING IN AREAS AT RISK**

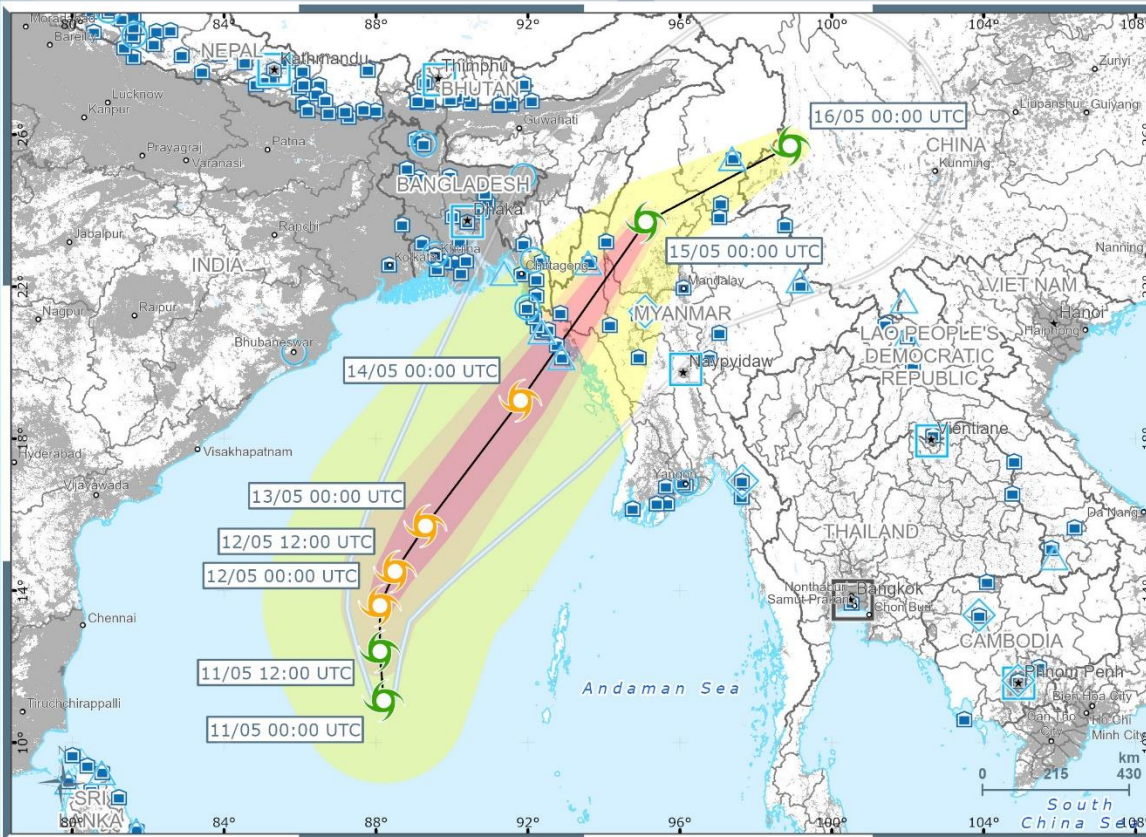


(All Countries Considered)

**120 km/h** windspeed | 1,735,609  
**90 km/h** windspeed | 2,691,416  
**60 km/h** windspeed | 26,729,026



**Tropical Cyclone ONE**



**CURRENT CLASSIFICATION**

**Tropical Storm**



**WORLD FOOD PROGRAMME PRESENCE**

**CLOSEST FACILITIES**

- Batticaloa Field Office (LKA):** 806 km on 11/05 at 00:00
- Trincomalee Sub Office (LKA):** 862 km on 11/05 at 12:00
- Ampara Sub Office (LKA):** 993 km on 12/05 at 00:00
- Mullaitivu Field Office (LKA):** 1022 km on 12/05 at 12:00

**CLOSEST HUMANITARIAN RESPONSE DEPOT**

**Subang Airport - Kuala Lumpur (MYS):** 1712 km on 11/05 at 00:00

Automatically generated alert powered by:  
**ADAM** - Automated Disaster Analysis and Mapping

**11 May 2023 | 02:38:37 GMT**

A collaboration with JRC

Follow alerts via Twitter: **@wfp\_adam**

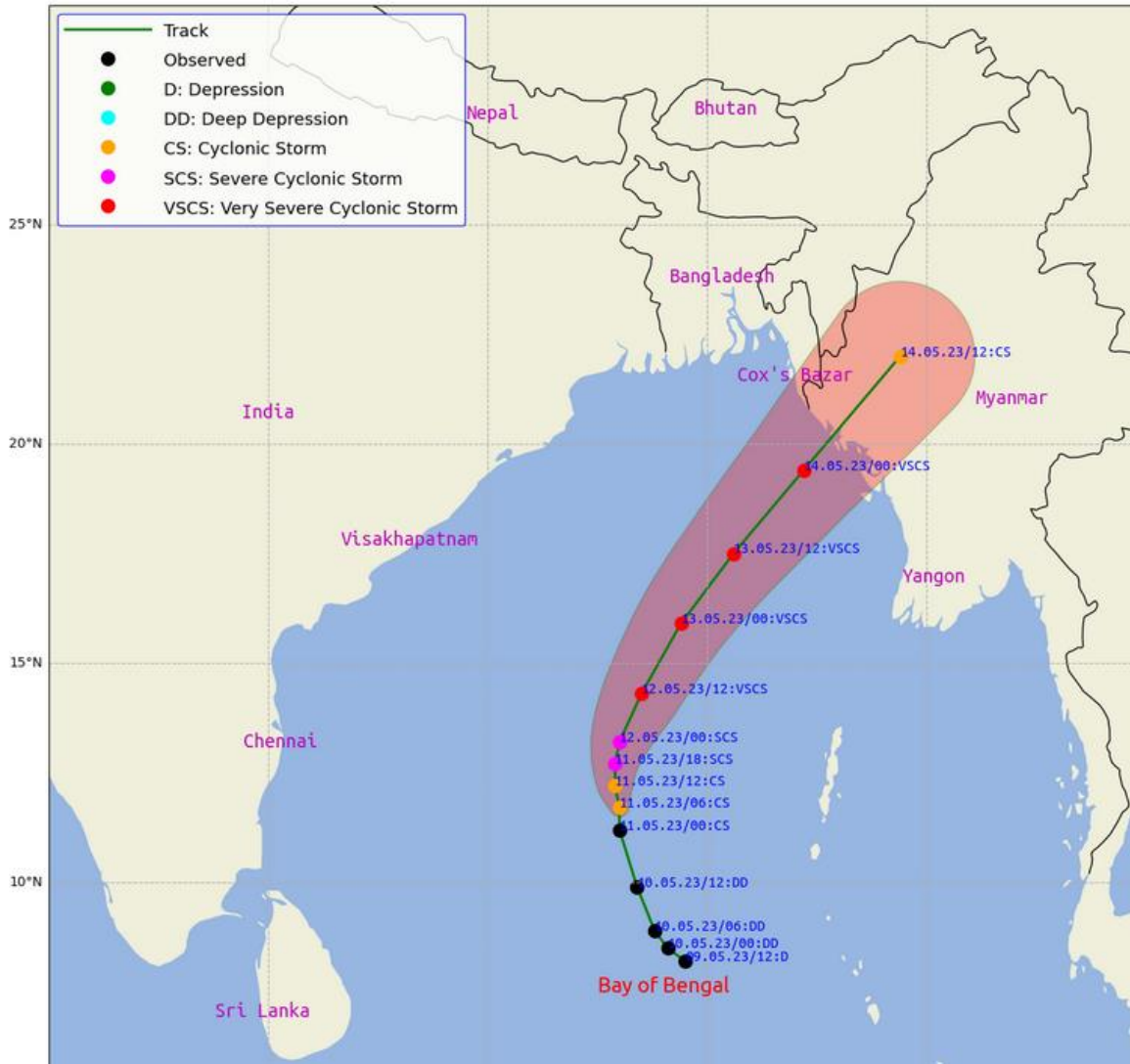


WFP Country Office	<b>Wind buffers</b>	<b>Wind speed</b>	<b>Wind speed (forecast)</b>	National Capital	International boundary	Region boundary (adm level)
WFP Sub Office	120 km/h	< 110 km/h	< 110 km/h	Major Town	Undetermined boundary and other boundary	Coastline
WFP Field Office	90 km/h	110 - 185 km/h	110 - 185 km/h	Intermediate Town	Densely Populated Area	
WFP Warehouse	60 km/h	185 - 240 km/h	185 - 240 km/h			
	Uncertainty	> 240 km/h	> 240 km/h			

Please report errors to [hq.gis@wfp.org](mailto:hq.gis@wfp.org). Event ID: 1000970\_1. Coordinate system: GCS WGS 1984. Sources: GDACS, WorldPop 2020, GAUL, WFP, ESRI. The designations employed and the presentation of material in this map do not imply the expression of any opinion whatsoever of WFP concerning the legal or constitutional status of any country, territory or sea area, or concerning the delimitation of frontiers.



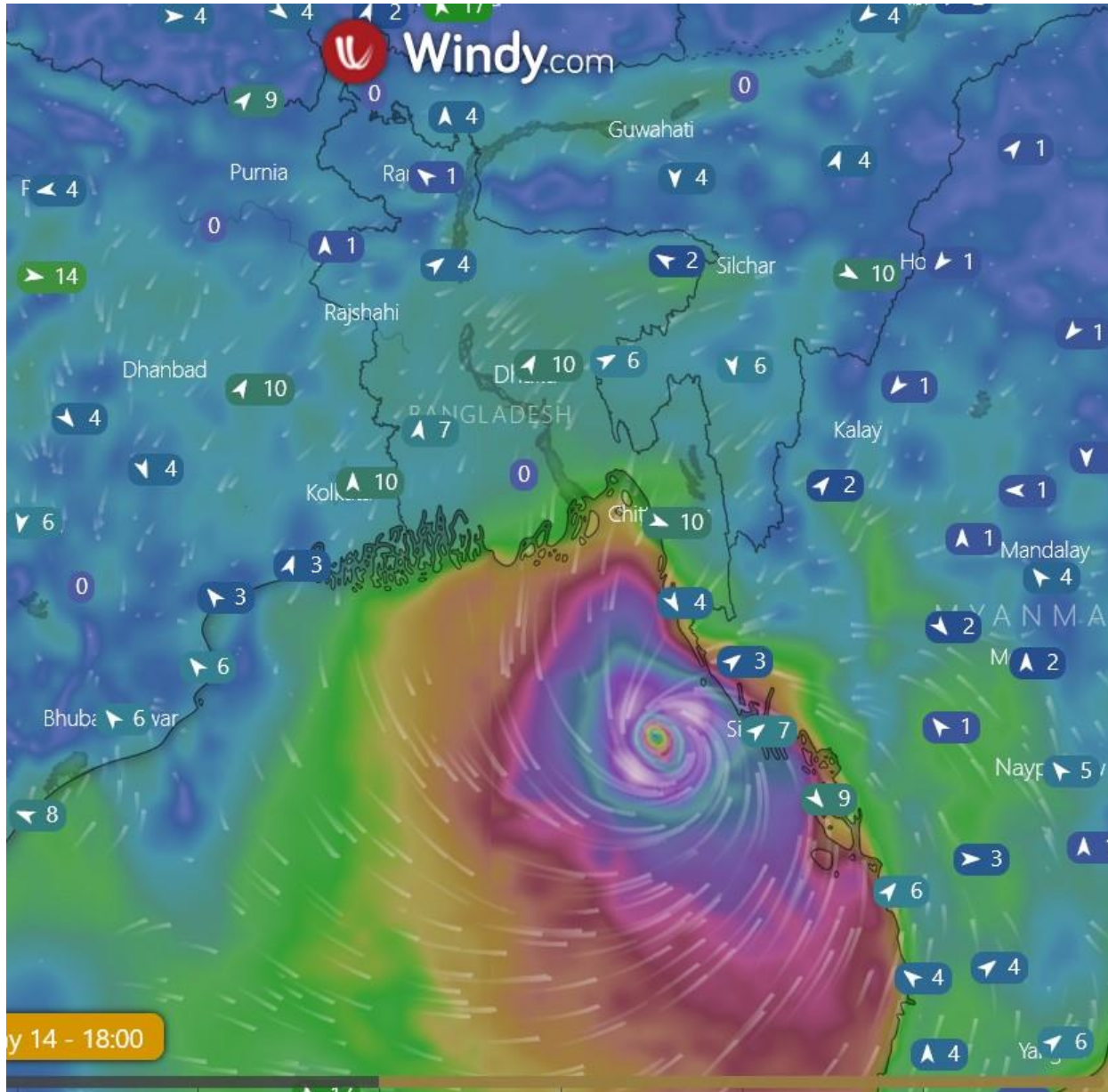
## Observed & forecast track along with Cone of Uncertainty of Cyclone "Mocha" as on 11 May 2023, 0000 UTC





# 1

## Update on probable Cyclone



# 1

## Update on probable Cyclone



- **An Inter-ministerial committee on cyclone was held yesterday at 3pm to discuss Cyclone preparedness. Further updates on this will be shared as soon as received.**
- **The RC has called a meeting with the ISCG in Cox's Bazar today at 2pm. Subsequently an Inter-cluster meeting will be called, and we will share updates accordingly.**

# 2

## Contingency plan discussion



BANGLADESH  
**FOOD SECURITY CLUSTER**  
*Strengthening Humanitarian Response*

1. MPA
2. DFP Gantt chart



## ACTIVITY GANTT CHART

District Focal Point (Sub-National)  
 Food Security Cluster (Cyclone)

Phases	Activity	Quiet time				Disaster Time							
		Dec	Jan	Feb	Mar	Apr	May	Jun	Jul	Aug	Sep	Oct	Nov
		Non-Cyclone				Cyclone	Non-Cyclone				Cyclone		
		P	P	P	P	FC	FC	F	F	F	F	FC	C
Pre Disaster	Meeting				1								
	Update Contact Directory, Contingency Stock, 4W ATLAS, District HR capacity, any other document required by FSC				√						√		
Alert Phase <sup>1</sup>	Meeting					Minimum 1 or as required							
	Daily update (Formatted)										√		
Emergency <sup>2</sup>	Meeting (land fall)					Minimum 2 for a particular disaster or as required							
	PID / Sit rep					Event based							
	Daily Update FSC (Formatted)					As required							
	Situation monitoring					Till the response							
	Assist to Need assessment (if triggered)					As required							
	District level Dissemination Meeting (if required)					As required							

<sup>1</sup> Activities to be undertaken only when an Alert Phase is being issued by the HCTT

<sup>2</sup> Activities to be undertaken immediately after Cyclone landfall.



3

## Convention on the Rights of Persons with Disability (CRPD)



BANGLADESH  
**FOOD SECURITY CLUSTER**  
*Strengthening Humanitarian Response*

**Sadiq to update**

4

## FSC Partner's preparedness update.



BANGLADESH  
**FOOD SECURITY CLUSTER**  
*Strengthening Humanitarian Response*

5

## Logistic Cluster update



BANGLADESH  
**FOOD SECURITY CLUSTER**  
*Strengthening Humanitarian Response*

6

AOB



BANGLADESH  
**FOOD SECURITY CLUSTER**  
*Strengthening Humanitarian Response*

- **Pre-crisis data preparedness**





BANGLADESH  
**FOOD SECURITY CLUSTER**  
*Strengthening Humanitarian Response*

Thank you