

SITUATION OVERVIEW:

The **EXTREMELY SEVERE CYCLONIC STORM "MOCHA"** (pronounced as "Mokha") over east-central bay of Bengal moved nearly north-eastwards with a speed of 19 Km/h during past 06 hours and lay centered at 0900 UTC of today, the 13th May 2023 over the same region near latitude 16.4°N and longitude 90.3°E, about 590 Km North-Northwest of Port Blair (India, 43333), 580 Km South-Southwest of Cox's Bazar (Bangladesh, 41992) and 490 Km South-Southwest of Sittwe (Myanmar, 48062).

It is very likely to move North-North-eastwards and cross Southeast Bangladesh and north Myanmar coasts between Teknaf, Cox's Bazar (Bangladesh, 41992) and Kyaukpyu (Myanmar, 48071), close to Sittwe (Myanmar) around 0600 UTC of 14th May, 2023 as an extremely severe cyclonic storm with maximum sustained wind speed of 170-180 Km/h gusting to 200 Km/h.

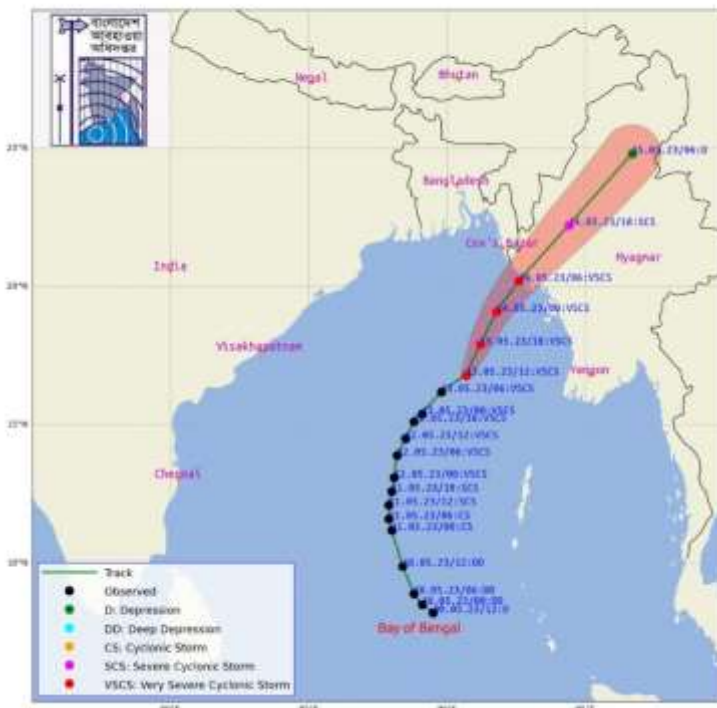
Storm surge with height of about 2.5-3.0 m above the astronomical tide is likely to inundate low lying areas of north Myanmar and adjoining southeast Bangladesh coasts during the time of landfall.

Heavy rainfall. We can expect 20 - 40 centimetres of rain, building through Sunday afternoon, and extremely intense rain after dark on Sunday. This will cause widespread significant flooding, and associated structural damage, and loss of stock. There will be high speed water flows in rivers and canals, expect undercutting and structural damage to culverts, bridges and embankments. There will be landslides.

Maritime ports of Cox's Bazar have been advised to hoist **Great Danger Signal No. Ten (10)**. Maritime ports of Chattogram and Payra have been advised to hoist **Great Danger Signal No. Eight (8)**. Maritime ports of Mongla have been advised to hoist Local Warning **Signal No. Four (4)**.

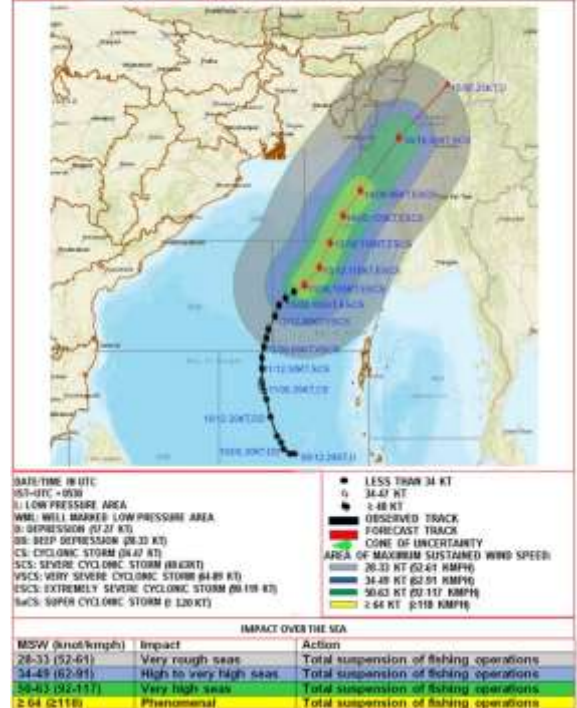
PROJECTED TRACK:

Observed & forecast track along with Cone of Uncertainty of Very Severe Cyclone "Mocha" as on 13 May 2023, 0600 UTC



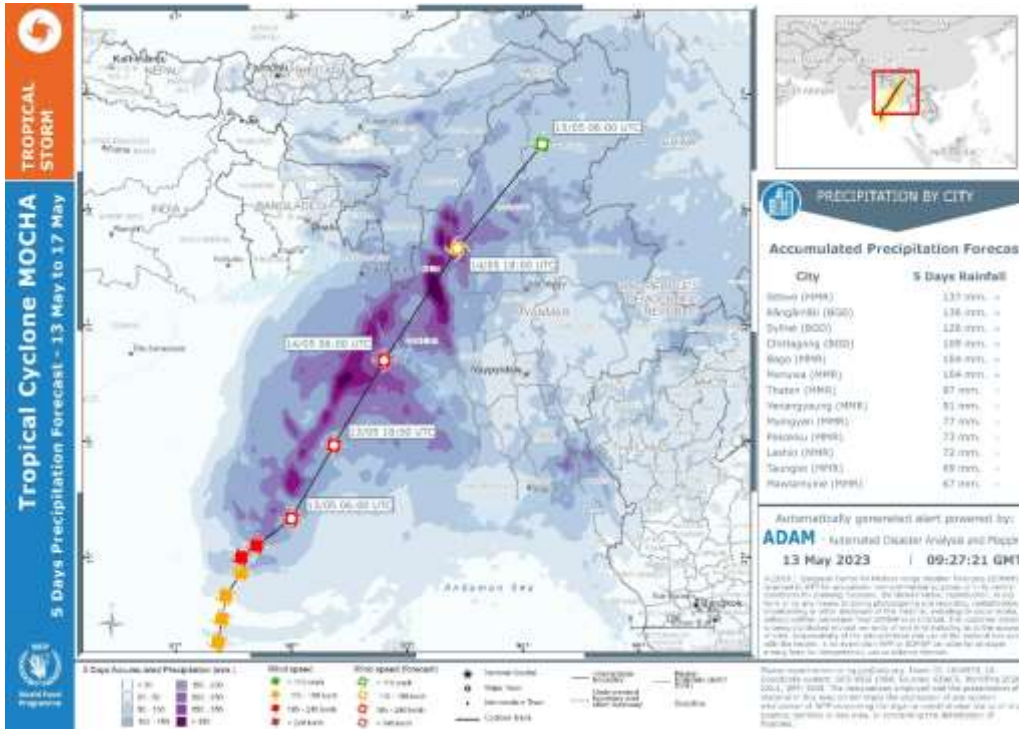
BANGLADESH METEOROLOGICAL DEPARTMENT

OBSERVED AND FORECAST TRACK ALONGWITH QUADRANT WIND DISTRIBUTION OF EXTREMELY SEVERE CYCLONIC STORM MOCHA OVER EASTCENTRAL BAY OF BENGAL BASED ON 0600 UTC (1130 IST) OF 13TH MAY 2023.



INDIAN METEOROLOGICAL DEPARTMENT

PROJECTED RAINFALL:



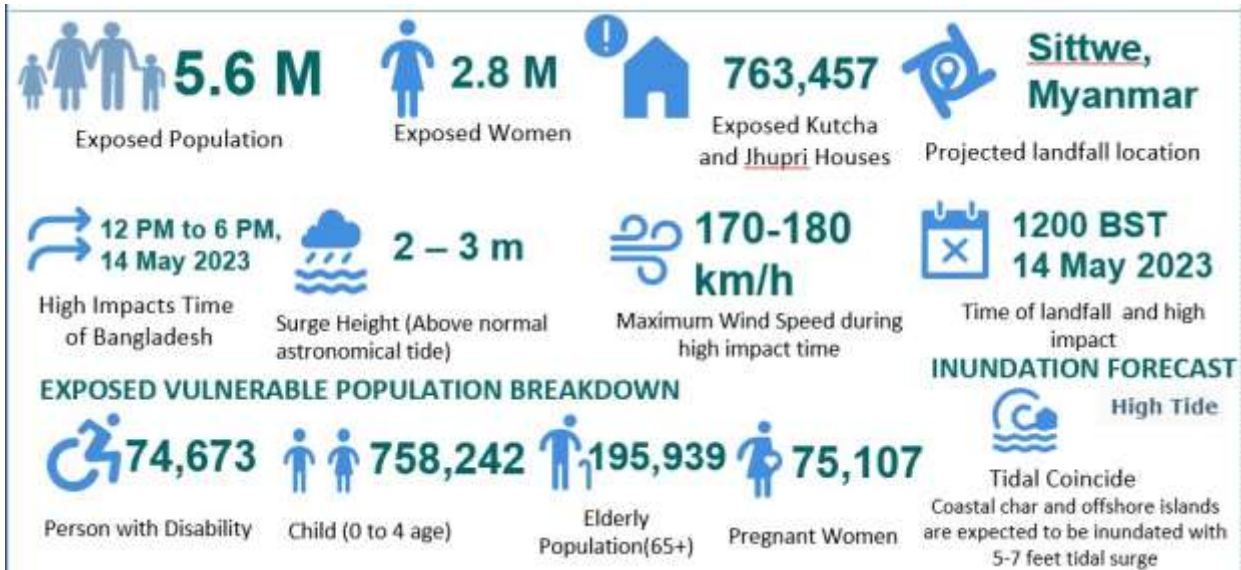
LANDSLIDE:
Cox's Bazar is expected to receive rainfall ranging from 221-345 mm over the next five days, which could potentially trigger landslides in high-risk areas.

PROJECTED AFFECTED POPULATION:

| District | Upazila/Thana(*) | Wind Speed km/h | Total Population | HH size | # of Male | # of Female | # of Child (0-4 Year) | # of Aged Population (65+) | # of PWD | # of HH (Kacha+Jhupri) | Farm holdings (Area in acres) | Risk Classification Based on Inform lack of coping capacity score |
|--------------|-------------------------|-----------------|------------------|---------|------------------|------------------|-----------------------|----------------------------|---------------|------------------------|-------------------------------|---|
| Bandarban | Alikadam | >118 | 64240 | 5.1 | 33412 | 30828 | 9443 | 1734 | 951 | 8857 | 6586 | High |
| Bandarban | Naikhongchhari | >118 | 80485 | 5 | 40833 | 39652 | 12314 | 2334 | 1191 | 11436 | 9887 | Medium |
| Bandarban | Thanchi | >118 | 30729 | 4.7 | 16079 | 14650 | 4855 | 860 | 455 | 4775 | 4588 | Medium |
| Cox's Bazar | Teknaf | >118 | 341345 | 5.7 | 171849 | 169496 | 52226 | 8534 | 4984 | 38082 | 19597 | Medium |
| Cox's Bazar | Ukhia | >118 | 267741 | 5.4 | 135003 | 132738 | 37751 | 8032 | 3909 | 32477 | 25882 | Medium |
| Cox's Bazar | Rohingya (Teknaf+Ukhia) | >118 | 922212 | 4.85 | 448422 | 473790 | 148584 | 36961 | 9194 | 190209 | | Medium |
| Rangamati | Belai Chhari | >118 | 33453 | 4.7 | 17795 | 15658 | 3914 | 1204 | 575 | 5942 | 4481 | High |
| Bandarban | Bandarban Sadar | 93-118 | 114997 | 4.4 | 62118 | 52879 | 12190 | 3565 | 1702 | 15431 | 11613 | Medium |
| Bandarban | Lama | 93-118 | 141978 | 4.8 | 73741 | 68237 | 19025 | 4685 | 2101 | 20786 | 15573 | Medium |
| Bandarban | Rowangchhari | 93-118 | 35514 | 4.3 | 18553 | 16961 | 4013 | 1527 | 526 | 5984 | 5647 | Medium |
| Bandarban | Ruma | 93-118 | 37903 | 4.8 | 20150 | 17753 | 4852 | 1099 | 561 | 5651 | 5739 | Medium |
| Chattogram | Banskhali | 93-118 | 496644 | 5.1 | 244210 | 252434 | 67047 | 19369 | 6109 | 72763 | 46077 | Medium |
| Chattogram | Lohagara | 93-118 | 322424 | 5.3 | 156329 | 166095 | 39013 | 14187 | 3966 | 39338 | 28211 | Low |
| Chattogram | Satkania | 93-118 | 443247 | 5.4 | 214256 | 228991 | 53190 | 19060 | 5452 | 49920 | 31190 | Very Low |
| Cox's Bazar | Chakaria | 93-118 | 612569 | 5.3 | 308822 | 303747 | 77184 | 20827 | 8944 | 72127 | 46008 | High |
| Cox's Bazar | Cox'S Bazar Sadar | 93-118 | 592708 | 5.3 | 311971 | 280737 | 72903 | 16596 | 8654 | 56059 | 29539 | Medium |
| Cox's Bazar | Maheshkhali | 93-118 | 414716 | 5.5 | 213922 | 200794 | 55157 | 14100 | 6055 | 53174 | 23146 | High |
| Cox's Bazar | Pekua | 93-118 | 221468 | 5.4 | 111432 | 110036 | 30563 | 7751 | 3233 | 28494 | 16082 | Low |
| Cox's Bazar | Ramu | 93-118 | 344252 | 5.5 | 174295 | 169957 | 47507 | 11016 | 5026 | 40670 | 30600 | Medium |
| Rangamati | Jurai Chhari | 93-118 | 32586 | 4.5 | 17402 | 15184 | 3422 | 1303 | 560 | 5860 | 5284 | High |
| Rangamati | Rajasthali | 93-118 | 30589 | 4.2 | 15944 | 14645 | 3089 | 1193 | 526 | 5425 | 3715 | Medium |
| Total | | | 5,581,800 | | 2,806,537 | 2,775,263 | 758,242 | 195,939 | 74,673 | 763,457 | | |

Source: The Needs Assessment Working Group projection using Informed Index

KEY NUMBERS



FSC PREPAREDNESS ACTIVITIES:

- FSC Bangladesh has already requested the FSC District Focal Points (DFP) to conduct district level FSC meeting as per regular cyclone preparedness activity (according to the FSC DFP activity Gantt chart and ToR) for the cyclone prone districts.
- FSC has Requested FSC DFP to participate the District Disaster Management Committee (DDMC) meeting chaired by the DC.
- FSC has already communicated with IFRC/BDRCS for their preparedness and alert.
- FSC has communicated with FAO and WFP colleagues on local level preparedness and the situation of agriculture (crop), shelter and partners capacity.
- FSC has conducted a preparedness meeting on 11 May 2023 during 4:00 to 5:00 pm. In addition to FSC regular participants, FAO Rep, CD's of different organizations, Donors from different location and local NGOs have joined the meeting. FSC partners shared field information.
- FSC partners WFP, Islamic Relief Bangladesh, World Vision, BRAC and other partners are prepositioning Dry Food Package and High Energy Biscuit (HEB). FSC partners are trying to increase the stock.
- DAE has issued agriculture advisory and communicated to the community. FSC partners also circulated the information. Early harvesting has been started already.
- IRB, BRAC, WVI are working on the cooked food distribution.
- Brief on Disability Inclusion according to CRPD is done during the FSC meeting. To include **Availability, Accessibility, Acceptability, Adaptability and Quality** for Persons with Disabilities.
- FAO is working on the provision of emergency cattle/poultry feed & other agriculture inputs.
- WFP is prepositioning High Energy Biscuit (HEB) for the Cyclone Shelters.

FSC REGIONAL FOCAL POINTS:

- Ms. Emily PITTMAN <emily.pittman@wfp.org>
- Ms. Galvez, Joy <Joy.Galvez@fao.org>